

Job Name/Location:

Tag #:

Date:

For:  File  Resubmit  
 Approval  Other \_\_\_\_\_

PO No.:

Architect:

GC:

Engr:

Mech:

Rep:

(Company)

(Project Manager)

**PTDCQ**  
**4-Way Ceiling Cassette Cover**



**Unit Data:**

|                       |    |
|-----------------------|----|
| Net Unit Weight (lbs) | 11 |
| Shipping Weight (lbs) | 18 |

**Fitting Properties:**

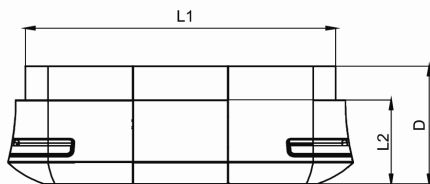
|          |                         |
|----------|-------------------------|
| Color    | White                   |
| Material | High Impact Polystyrene |

**Compatible Outdoor Units:**

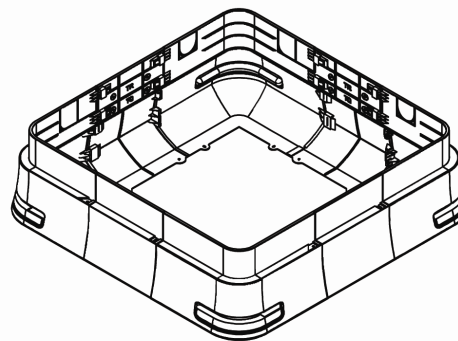
- ARNU053TRC2      ARNU183TQC2
- ARNU073TRC2
- ARNU093TRC2
- ARNU123TRC2
- ARNU153TQC2

**Standard Features:**

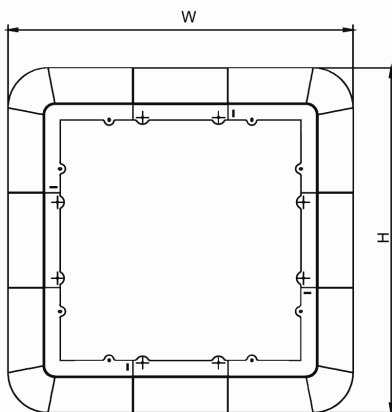
- Light weight
- Covers the side area of cassette in exposed applications



Side View



Isometric View



Top View

|    |          |
|----|----------|
| W  | 35 3/4"  |
| H  | 35 3/4"  |
| D  | 12 1/8"  |
| L1 | 32 3/16" |
| L2 | 8 5/8"   |