

ID-27R



FEATURES

- Crispers and deli drawers in low-temp, high-humidity zones for optimum freshness
- Ready to be fitted with custom panels and handles to blend with cabinetry
- Smart-touch controls for streamlined access to more settings
- Soft-close doors and drawers
- Soft-on LED lights for varying degrees of brightness
- Rigorously tested in our U.S. manufacturing facilities to ensure decades of use
- Exceptional 24/7 support from Madison, WI-based Customer Care team

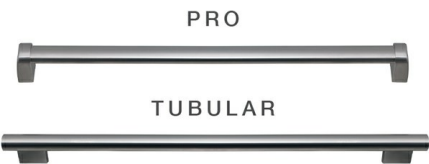
ACCESSORIES

- Egg Container
- Dual installation kits
- Stainless steel front panels with tubular or pro handles
- Stainless steel kickplate
- Stainless steel pro handles
- Stainless steel tubular handles

Accessories are available through an authorized Sub-Zero dealer. For local dealer information, visit subzero-wolf.com/locator.



HANDLE ACCESSORIES



PRODUCT DETAILS

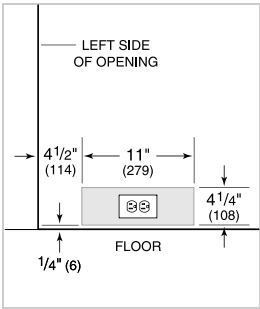
REFRIGERATOR

- Adjustable drawer dividers

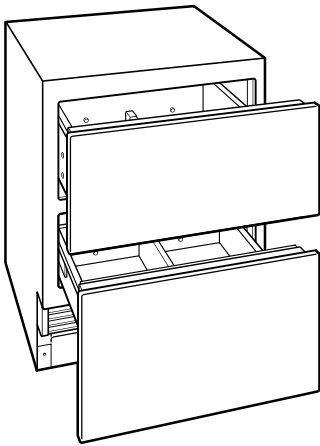
PRODUCT SPECIFICATIONS

Model	ID-27R
Dimensions	27"W x 34 1/2"H x 24"D
Drawer Clearance	18 3/8"
Weight	190 lb
Refrigerator Capacity	4.6 cu ft
Electrical Supply	115 VAC, 60 Hz
Electrical Service	15 amp dedicated circuit
Receptacle	3-prong grounding-type

ELECTRICAL

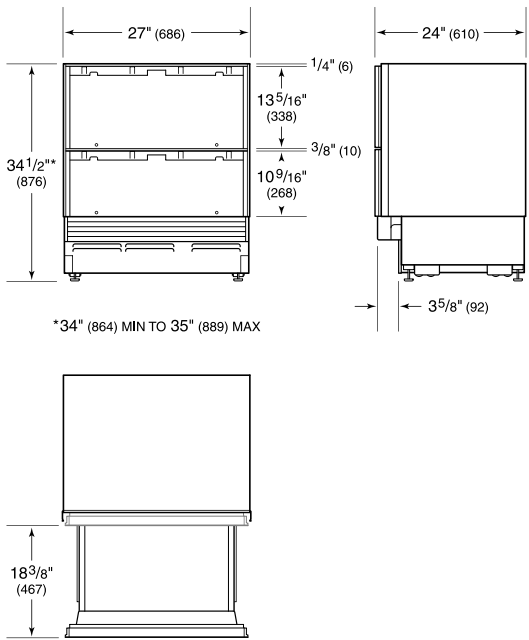


INTERIOR VIEW

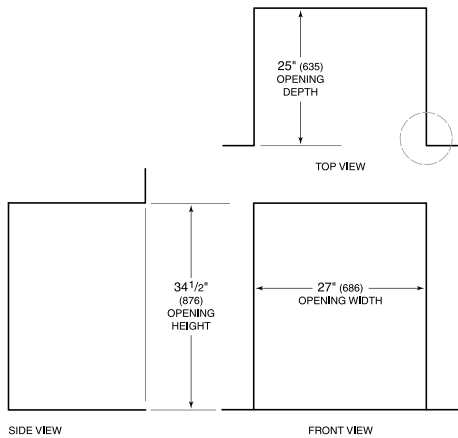


This illustration is intended for interior reference only and may not represent the exterior of the model being specified.

DIMENSIONS



STANDARD INSTALLATION



NOTE: 3 1/2" (89) finished returns will be visible and should be finished to match cabinetry.

