

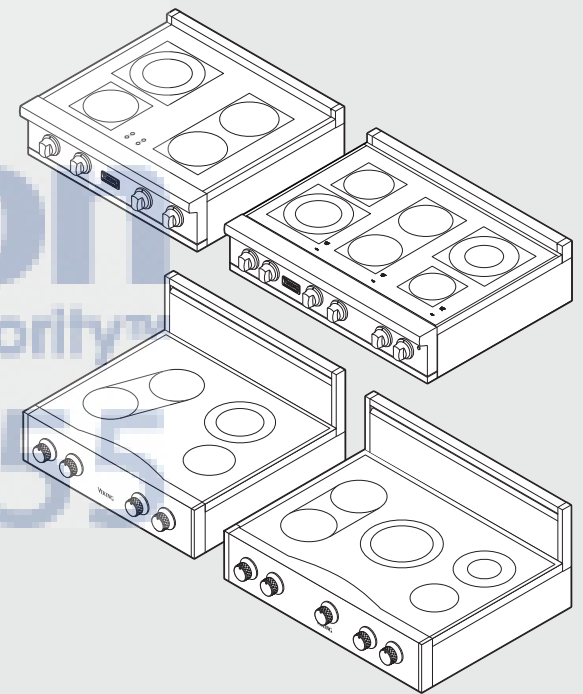
Viking Installation Guide



Viking Range Corporation
111 Front Street
Greenwood, Mississippi 38930 USA
(662) 455-1200

For product information,
call 1-888-VIKING1 (845-4641)
or visit the Viking Web site at
vikingrange.com

AjMadison
Your Appliance Authority™
800-570-3355



Professional and Designer
Built-In Electric Rangetops



Table of Contents

Warnings & Important Safety Information	3
Dimensions (Professional Series)	4
Specifications (Professional Series)	5
Dimensions (Designer Series)	6
Specifications (Designer Series)	7
Clearance Dimensions	8
Electrical Requirements	10
General Information	11
Installation	12
Final Preparation	13
Performance Checklist	13
Service & Registration	14



IMPORTANT— Please Read and Follow

- Before beginning, please read these instructions completely and carefully.

- The installer must leave these instructions with the consumer who should retain for local inspector's use and for future reference.

In Canada: Installation must be in accordance with the current CSA C22.1 Canadian Electrical Codes Part 1 and/or local codes.

Your safety and the safety of others is very important.

We have provided many important safety messages in this manual and on your appliance. **ALWAYS** read and obey all safety messages.

 This is the safety alert symbol. This symbol alerts you to hazards that can kill or hurt you and others.

All safety messages will be preceded by the safety alert symbol and the word "DANGER," "WARNING" or "CAUTION." These words mean:

⚠ DANGER
 Hazards or unsafe practices which **WILL** result in severe personal injury or death


⚠ WARNING
 Hazards or unsafe practices which **COULD** result in severe personal injury or death

⚠ CAUTION
 Hazards or unsafe practices which **COULD** result in minor personal injury or property damage.

All safety messages will identify the hazard, tell you how to reduce the chance of injury, and tell you what can happen if the instructions are not followed.


⚠ DANGER

ELECTRICAL SHOCK HAZARD

 To avoid risk of electrical shock, personal injury or death; verify your appliance has been properly grounded in accordance with local codes or in absence of codes, with the National Electrical Code (NEC). ANSI/NFPA 70-latest edition.

⚠ WARNING

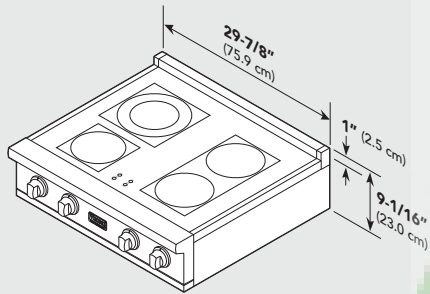
MOVING HAZARD

 To avoid risk of severe personal injury; this appliance requires two or more personnel while handling and moving. Possible use of appliance moving devices is recommended.

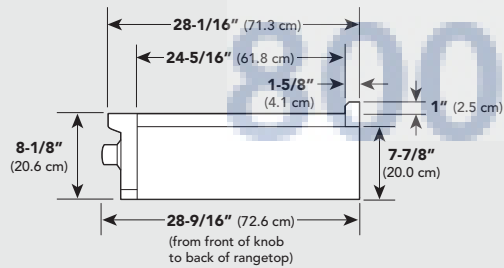
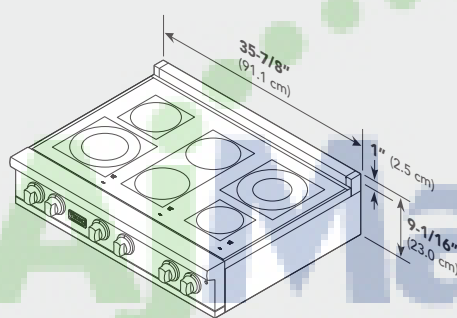
- **DO NOT** remove permanently affixed labels, warnings, or plates from product. This may void the warranty.
- All local and national codes and ordinances must be observed. Installation must conform with local codes.

Dimensions (Professional Series)

Electric 30" Rangetop



Electric 36" Rangetop



Note: Unit shown with standard island trim.

Specifications (Professional Series)

Professional Electric Rangetops			
Description	VERT530-4B		VERT536-6B
Overall width	29-7/8" (75.9 cm)		35-7/8" (91.1 cm)
Overall height from bottom	To top of glass frame—8-1/8" (20.6 cm) To top of island trim—add 1" (2.5 cm)		
Additions to base height	To top of backguard—add 8" (20.3 cm) To top of high-shelf—add 23-1/2" (59.7 cm)		
Overall depth from rear	To end of side panel—24-5/16" (61.8 cm) To end of landing ledge—28-1/16" (71.3 cm) To end of knobs—28-9/16" (72.6 cm)		
Cutout width	30" (76.2 cm)	36" (91.4 cm)	
Cutout height	7-1/2" (19.1 cm)		
Cutout depth	24" (61.0 cm)		
Electrical requirements	3-wire, 240-208/120VAC/60Hz; 40 amp Unit is equipped with No. 10 ground wire in conduit. Should be fused separately.		
Maximum amp usage	240V—34.6 amps (8.3 kw) 208V—29.8 amps (6.2 kw)		240V—49.2 amps (11.8 kw) 208V—42.6 amps (8.9 kw)
Surface element rating	240V	208V	240V 208V
Left front (dual element)	N/A	N/A	2,500/1,000 watts 1,875/750 watts
Left front (single element)	1,500 watts	1,125 watts	N/A N/A
Left rear (dual element)	2,500/1,000 watts	1,875/750 watts	N/A N/A
Left rear (single element)	N/A	N/A	1,200 watts 900 watts
Center front/rear	N/A	N/A	1,800 watts 1,350 watts
Bridge	800 watts	600 watts	800 watts 600 watts
Right front	1,800 watts	1,350 watts	1,500 watts 1,125 watts
Right rear (dual element)	N/A	N/A	2,200/750 watts 1,650/560 watts
Right rear (single element)	1,800 watts	1,350 watts	N/A N/A
Approximate shipping weight	110 lbs. (49.5 kg)		165 lbs. (74.3 kg)

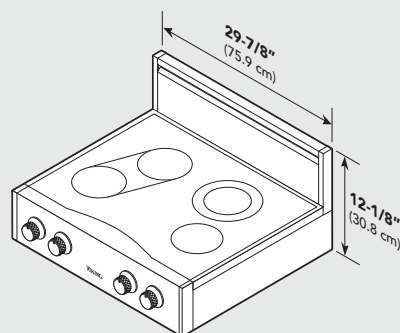
Minimum clearances from adjacent combustible construction

- Cooking surface and below, i.e., 36" (91.4 cm) and below
 - o Sides—0"
 - o Rear—0" with backguard or highshelf; 0" with island trim and noncombustible rear wall; 6" (15.2 cm) with island trim and combustible rear wall.
- Above cooking surface, i.e. above 36" (91.4 cm)
 - o Sides—6" (15.2 cm)
 - o Within 6" (15.2 cm) side clearance, wall cabinets no deeper than 13" (33.0 cm) must be minimum 18" (45.7 cm) above cooking surface.
 - o Wall cabinets directly above product must be minimum 36" (91.4 cm) for open top burners above cooking surface.

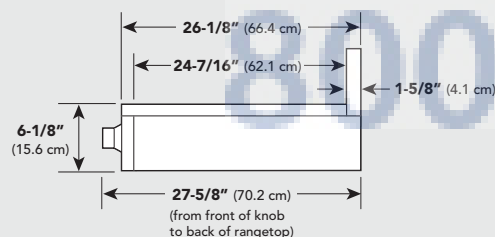
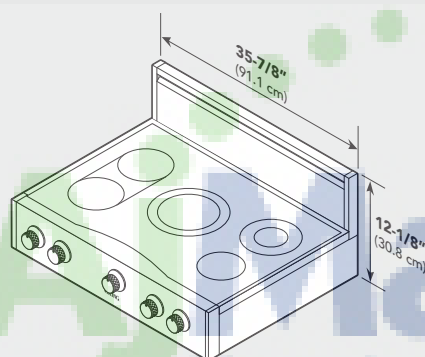
Dimensions (Designer Series)

Specifications (Designer Series)

Electric 30" Rangetop



Electric 36" Rangetop



Note: Unit shown with 6" (15.2 cm) backguard.

Designer Electric Rangetops

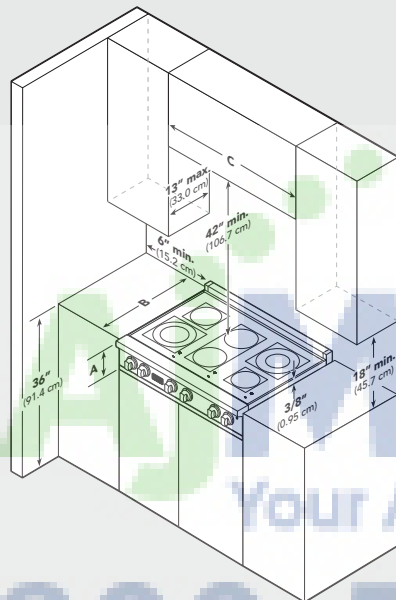
Description	DERT301-4B	DERT361-5B
Overall width	29-7/8" (75.9 cm)	35-7/8" (91.1 cm)
Overall height from bottom	To top of glass frame—6-1/8" (15.6 cm) To top of backguard—add 6" (15.2 cm)	
Additions to base height	To top of island trim—add 0" (0.0 cm) To top of high-shelf—add 23-1/2" (59.7 cm)	
Overall depth from rear	To end of side panel—24-7/16" (62.1 cm) To end of landing ledge—26-1/8" (66.4 cm) To end of knobs—27-5/8" (70.2 cm)	
Cutout width	30" (76.2 cm)	36" (91.4 cm)
Cutout height	5-3/4" (14.6 cm)	5-3/4" (14.6 cm)
Cutout depth	24-7/16" (62.1 cm)	24-7/16" (62.1 cm)
Electrical requirements	3-wire, 240-208/120VAC/60Hz; 40 amp Unit is equipped with No. 10 ground wire in conduit. Should be fused separately.	
Maximum amp usage	240V—35.0 amps (8.4 kw) 208V—30.3 amps (6.3 kw)	240V—45.0 amps (10.8 kw) 208V—40.0 amps (8.3 kw)
Surface element rating	240V Left front 1,800 watts Bridge 800 watts Left rear 1,800 watts Center (dual element) N/A Right front 1,500 watts Right rear (dual element) 2,500/1,000 watts	208V 1,350 watts 600 watts 1,350 watts N/A 1,125 watts 1,875/750 watts
	240V 1,800 watts 800 watts 1,800 watts 2,700/1,700 watts 1,500 watts 2,200/750 watts	208V 1,350 watts 600 watts 1,350 watts 2,025/1,275 watts 1,125 watts 1,650/560 watts
Approximate shipping weight	52 lbs. (23.4 kg)	63 lbs. (28.4 kg)

Minimum clearances from adjacent combustible construction

- Cooking surface and below, i.e., 36" (91.4 cm) and below
 - o Sides—0"
 - o Rear—0" with backguard or highshelf; 0" with island trim and non-combustible rear wall; 6" (15.2 cm) with island trim and combustible rear wall.
- Above cooking surface, i.e. above 36" (91.4 cm)
 - o Sides—6" (15.2 cm)
 - o Within 6" (15.2 cm) side clearance, wall cabinets no deeper than 13" (33.0 cm) must be minimum 18" (45.7 cm) above cooking surface.
 - o Wall cabinets directly above product must be minimum 36" (91.4 cm) for open top burners above cooking surface.

Clearance Dimensions (Proximity to Cabinets)

- This rangetop may be installed directly adjacent to existing 36" (91.4 cm) high base cabinets.
- IMPORTANT:** The top grate support **MUST** be 3/8" (.95 cm) above the adjacent base cabinet countertop.
- The rangetop **CANNOT** be installed directly adjacent to sidewalls, tall cabinets, tall appliances, or other side vertical surfaces above 36" (91.4 cm) high. There must be a minimum of 6" (15.2 cm) side clearance from the rangetop to such combustible surfaces above the 36" (91.4 cm) counter height.
- Within the 6" (15.2 cm) side clearance to combustible vertical surfaces above 36" (91.4 cm), the maximum wall cabinet depth must be 13" (33.0 cm) and wall cabinets within this 6" (15.2 cm) side clearance must be 18" (45.7 cm) above the 36" (91.4 cm) high countertop.
- Wall cabinets above the rangetop must be a minimum of 42" (106.7 cm) above the rangetop cooking surface for the full width of the rangetop. This minimum height requirement does not apply if a range hood is installed over the cooking surface.



	VERT		DEPT	
A	7-1/2" (19.1 cm)		5-3/4" (14.6 cm)	
B	24" (61.0 cm)		24-7/16" (62.1 cm)	
C	30" (76.2 cm)	36" (91.4 cm)	30" (76.2 cm)	36" (91.4 cm)

- Note:** Based on 24" (61 cm) deep cabinet.
- Note:** Minimum clearance for back wall is 0" with backguard or high-shelf.
- Note:** If a range hood is installed, wall cabinets above the rangetop have a different minimum clearance height.

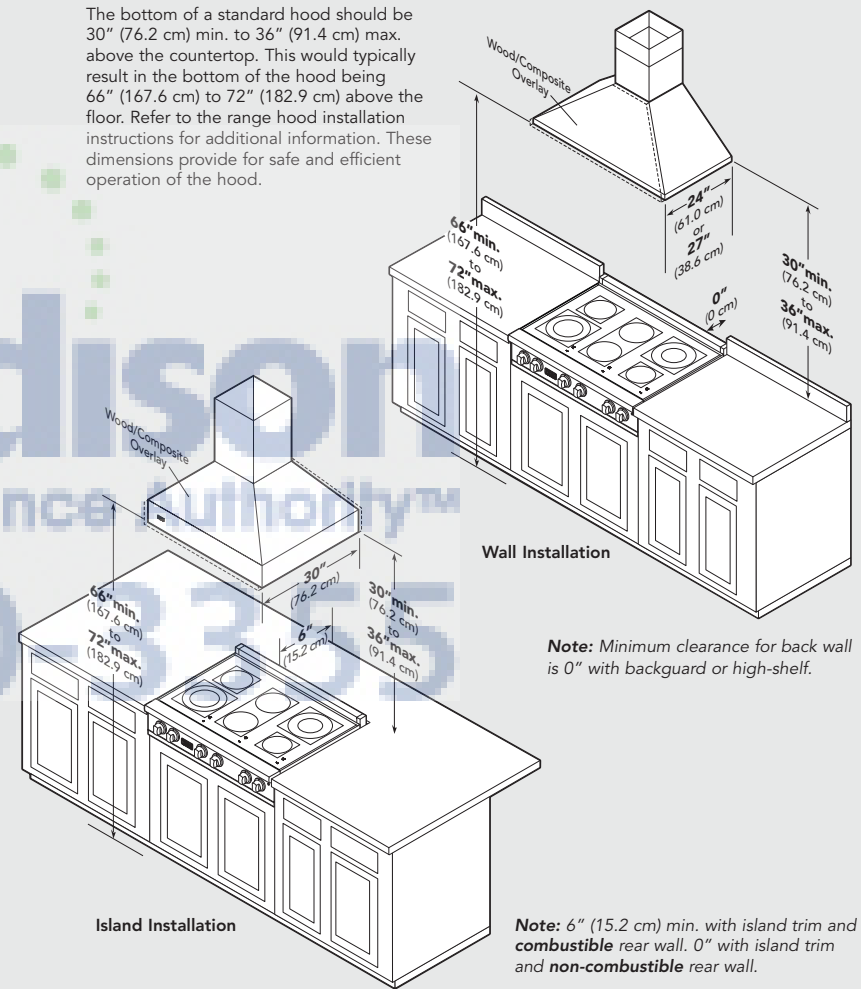
⚠ CAUTION

BURN HAZARD

To avoid risk of personal injury; the use of cabinets for storage above the appliance may result in a potential burn hazard. Combustible items may ignite, metallic items may become hot and cause burns. If a cabinet storage is to be provided the risk can be reduced by installing a rangehood that projects horizontally a minimum 5" (12.7 cm) beyond the bottom of cabinets.

Clearance Dimensions (Wood/Composite Overlay)

The bottom of a standard hood should be 30" (76.2 cm) min. to 36" (91.4 cm) max. above the countertop. This would typically result in the bottom of the hood being 66" (167.6 cm) to 72" (182.9 cm) above the floor. Refer to the range hood installation instructions for additional information. These dimensions provide for safe and efficient operation of the hood.



Note: Minimum clearance for back wall is 0" with backguard or high-shelf.

Note: 6" (15.2 cm) min. with island trim and combustible rear wall. 0" with island trim and non-combustible rear wall.

Electrical Requirements

Electrical Requirements

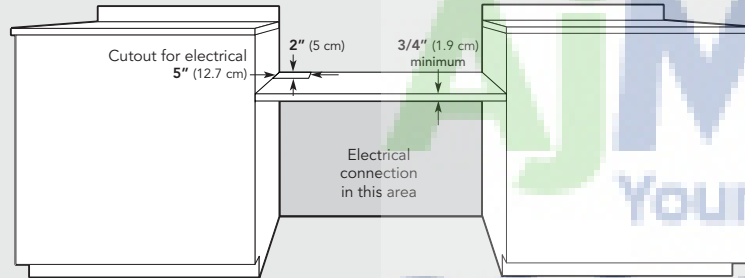
Check your national and local codes regarding this unit. This rangetop requires 3-wire, 240-208 VAC/60 Hz. See "Installation" section for grounding instructions. Must be fused separately from any other circuit.

⚠ WARNING

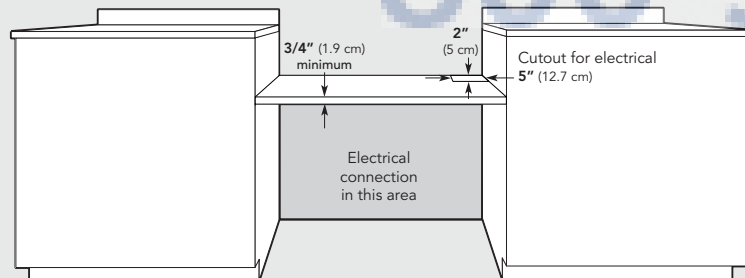
ELECTRICAL SHOCK HAZARD

To avoid the risk of electrical shock, personal injury or death; verify electrical power is turned off at the breaker box until the rangetop is installed and ready to operate, installation by an authorized installer only.

VERT



DERT



General Information

READ AND FOLLOW ALL WARNING AND CAUTION INFORMATION WHEN INSTALLING THIS APPLIANCE.

- All openings in the wall behind the appliance and in the floor under the appliance must be sealed.
- **DO NOT** obstruct the flow of combustion and ventilation air.

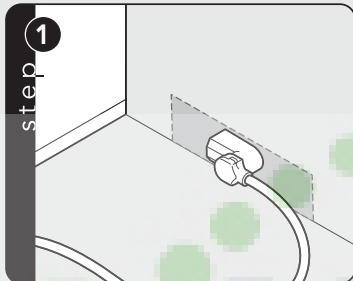
Moving, Handling, and Unpacking

Remove and discard all packing materials, including cardboard and tape on the outside of the rangetop.

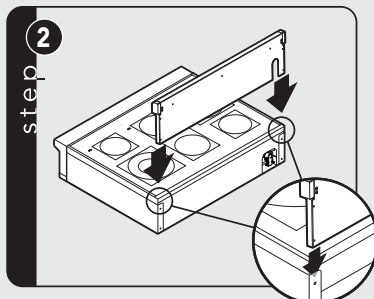
Some stainless steel parts may have a plastic protective wrap which must be peeled off. All stainless steel body parts should be washed with hot, soapy water and with a liquid cleaner designed for this material. If buildup occurs, **DO NOT** use steel wool, abrasive cloths, cleaners, or powders.

Installation

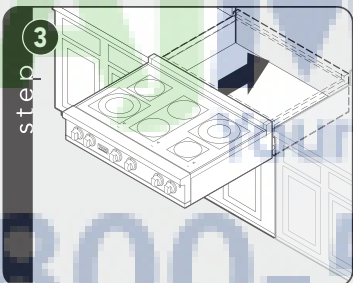
Note: Refer to rangetop electrical requirements section for proper installation information.



Connect electrical in shaded area. See the "Electrical Requirements" section for more information.



Install island trim. Attach with four screws provided.



Slide rangetop into place.

Final Preparation

- All stainless steel body parts should be wiped with hot, soapy water and with a liquid cleaner designed for this material. If buildup occurs, **DO NOT** use steel wool, abrasive cloths, cleansers, or powders. If it is necessary to scrape stainless steel to remove encrusted materials, soak with hot, wet cloths to loosen the material, then use a wool or nylon scraper. **DO NOT** use a metal knife, spatula, or any other material tool to scrape stainless steel! Scratches are almost impossible to remove.

Performance Checklist

A qualified installer should carry out the following checks:

- Check top surface elements—glow red when turned on.
- Check hot surface indicator lights—glow red when corresponding element is on.

Service & Registration

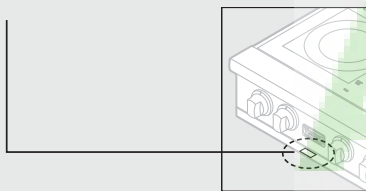
Notes

Only authorized replacement parts may be used in performing service on the appliance. All servicing should be referred to a qualified technician.

Contact Viking Range Corporation, 1-888-VIKING1 (845-4641), for the nearest service parts distributor in your area or write to:

**VIKING RANGE CORPORATION
PREFERRED SERVICE
1803 Hwy 82W
Greenwood, Mississippi 38930 USA**

Rangetop – The serial number and model number for your appliance can be found by looking under the control panel.



Record the following information indicated below. You will need it if service is ever required.

Model number _____

Serial number _____

Date of purchase _____

Date installed _____

Dealer's name _____

Address _____

These installation instructions should remain with the unit for future reference.

