



# FF29K



24.5" x 18.5" x 18.38" (H x W x D)

Compact all-refrigerator with automatic defrost, glass shelves, and black exterior finish; replaces FF29BK

### Highlights:

Compact size is ideal for use on top of counters

Automatic defrost saves on user maintenance

Seamless interior liner simplifies clean-up

Includes adjustable glass shelves and door storage

### Product Features:

Fully finished black cabinet	Allows the refrigerator to be used freestanding
Compact dimensions	Slim width and compact depth for easy placement above or below the counter
Automatic defrost	Reduced user maintenance with auto defrost system
One piece interior liner	Easy clean-up with a seamless liner that won't hold a mess in hidden crevices
Door shelves	Store large bottles right on the door for easy access
Adjustable glass shelves	Rearrange your refrigerator space to accommodate all shapes and sizes or remove shelves for a simple clean-up
Reversible door	Keep your options flexible with a reversible door that's easy to switch when your arrangement changes
Adjustable thermostat	Manage the interior temperature with ease and accuracy
100% CFC free	Environmentally friendly design without ozone-damaging chemicals



SUMMIT APPLIANCE DIVISION FELIX STORCH, INC.

770 Garrison Avenue, Bronx, NY 10474 USA TEL 718-893-3900 FAX 844-478-8799

✉ info@summitappliance.com

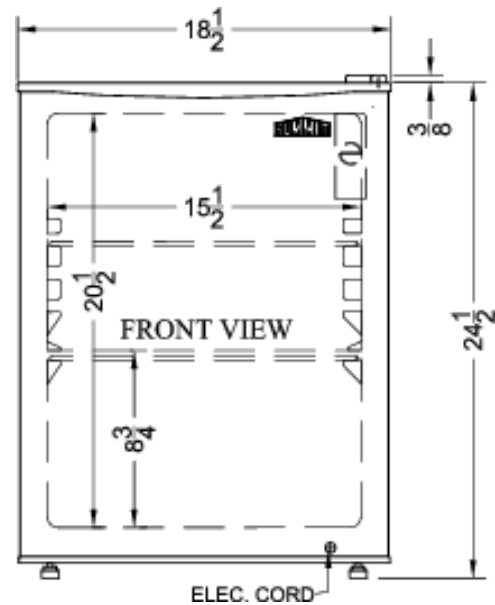
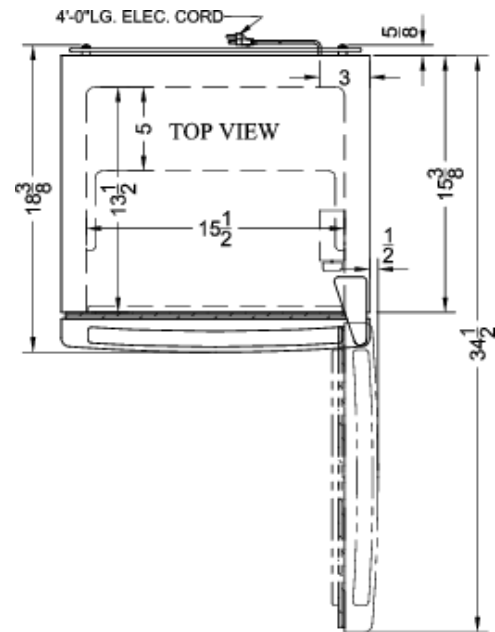


www.summitappliance.com



## FF29K Specifications:

Overview	
Height	24.5"
Height to Hinge Cap	24.88"
Width	18.5"
Depth	18.38"
Depth with door at 90°	34.5"
Capacity	2.4 cu.ft.
Defrost Type	Automatic
Door	Black
Cabinet	Black
US Electrical Safety	ETL
Canadian Electrical Safety	ETL-C
Energy Usage/Year	266.0kWh/year
Amps	0.6
Voltage/Frequency	115 V AC/60 Hz
Weight	40.0 lbs.
Shipping Weight	60.0 lbs.
Parts & Labor Warranty	1 Year
Compressor Warranty	5 Years
Refrigerator Features	
Door Swing	RHD
Reversible	Yes
Shelf Type	Glass
Shelf Qty	2
Full Door Shelf Qty	2
Adjustable Shelves	Yes
Thermostat Type	Dial
Refrigerant Type	R600a
Refrigerant Amount	0.63oz.
Level Legs Qty	2
Dimensions	
Interior Height	20.5"
Interior Width	15.5"
Interior Depth	13.5"
Compressor Step Height	8.75"
Compressor Step Width	15.5"
Compressor Step Depth	5.0"



SUMMIT APPLIANCE DIVISION FELIX STORCH, INC.

770 Garrison Avenue, Bronx, NY 10474 USA TEL 718-893-3900 FAX 844-478-8799

info@summitappliance.com

www.summitappliance.com