

DW2450

FEATURES

Adapts easily to differently shaped dishes and glasses with a height-adjustable middle rack and fold-down tines

Removes food and grease with three powerful spray arms and custom wash and dry options for different soil levels

Filters food efficiently through fine mesh for cleaner water throughout every cycle

Dries every type of dish, utensil, and pan thoroughly with a hot rinse and fan-assist

Operates in near silence that never interrupts

Opt for a stainless-steel panel for a timeless, sophisticated look that coordinates with classic Wolf and Sub-Zero styles

Or, choose custom panels to integrate into any kitchen design

Provides better visibility with interior LED lights

Maintains clean lines with sleek control panel and floor status light

Marvel at the durability of the stainless-steel exterior and interior, built for decades of use

Monitor cycle progress, even start a new cycle, remotely. Receive alerts when rinse aid is low

Cove's leak protection system offers peace of mind in the rare event of a leak. A conductivity sensor in the base of the unit will automatically stop a cycle in progress if it detects a leak.

ACCESSORIES

24" Stainless Steel Door Panel Kits

60cm Stainless Steel Door Panel Kits

24" Stainless Steel Kickplates

60cm Stainless Steel Kickplates

Accessories are available through an authorized dealer.  
For local dealer information, visit [subzero-wolf.com/locator](https://subzero-wolf.com/locator).



HANDLE ACCESSORIES

PRO



TUBULAR



PRODUCT DETAILS

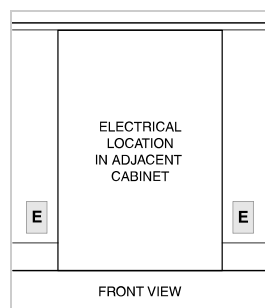
DISHWASHER

- 4 LED lights (2 sides; 2 top)
- 43 spray jets across three spray arms
- Four-stage, fine mesh filter
- Adjustable stemware rail
- Adjustable cup shelf
- Height-adjustable middle rack
- Easy-glide bottom rack
- Upper silverware rack
- One large utensil basket

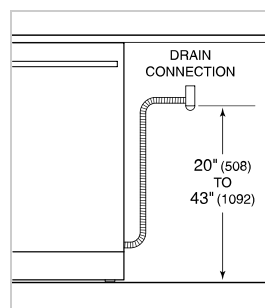
## PRODUCT SPECIFICATIONS

|                    |  |
|--------------------|--|
| Model              | DW2450   |
| Dimensions         | 23 5/8"W x 34 1/2"H x 23 1/4"D                         |
| Door Clearance     | 26 3/4"  |
| Sound Level        | 41 dBA (Model and cycle/option dependent)              |
| Electrical Supply  | 115 VAC, 60 Hz   |
| Electrical Service | 15 amp dedicated circuit                               |
| Receptacle         | 3-prong grounding-type                                 |
| Cord Length        | 6'   |
| Water Connection   | 5' braided tubing with 3/8" female compression fitting |
| Drain Connection   | 5' (1.5 m) corrugated tubing                           |
| Plumbing Pressure  | 30–140 psi   |

## ELECTRICAL



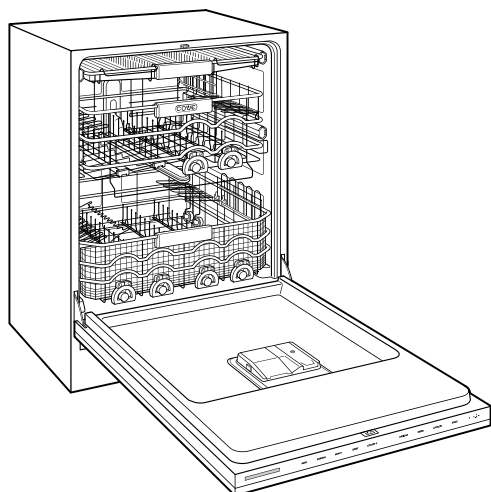
## PLUMBING



**COVE OPENING WIDTH** Cove dishwashers accommodate varying opening widths. A 23 5/8" (60 cm) width provides minimum reveals and is ideal for new construction. A 24" width is also common; however, reveals for a 24" opening will be larger than the reveals for a 23 5/8" opening unless the panel width is adjusted accordingly. 24" and 60 cm stainless steel panels are available and must be specified accordingly.

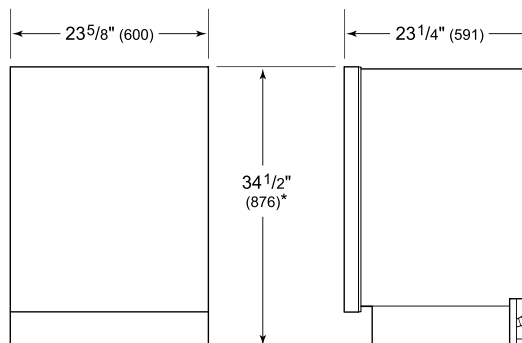
**PANEL SPECIFICATIONS** For complete panels specifications including width/height, weight requirements and thickness requirements visit [subzero-wolf.com/reveal](http://subzero-wolf.com/reveal).

## INTERIOR VIEW

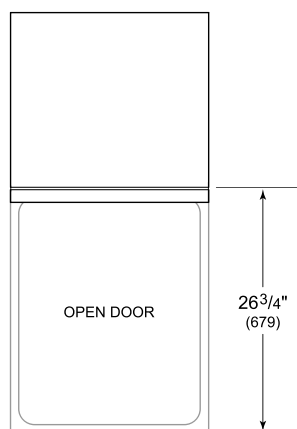


This illustration is intended for interior reference only and may not represent the exterior of the model being specified.

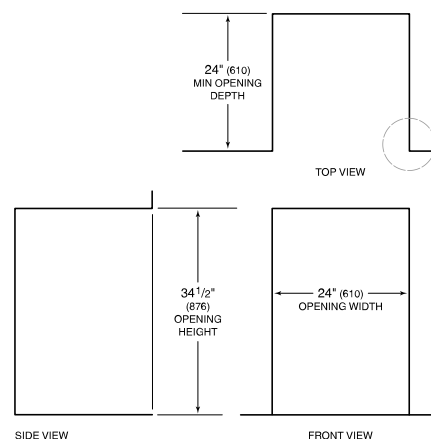
## DIMENSIONS



\*33 3/4" (857) MIN TO 34 3/4" (883) MAX



## 24" INSTALLATION



NOTE: 3 1/2" (89) finished returns will be visible and should be finished to match cabinetry.

