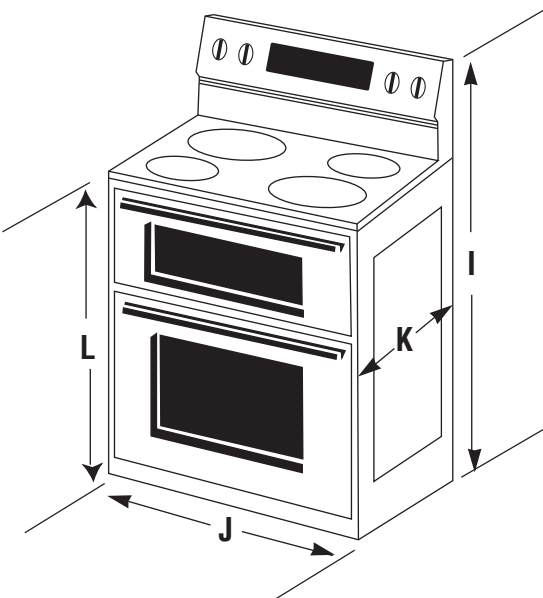
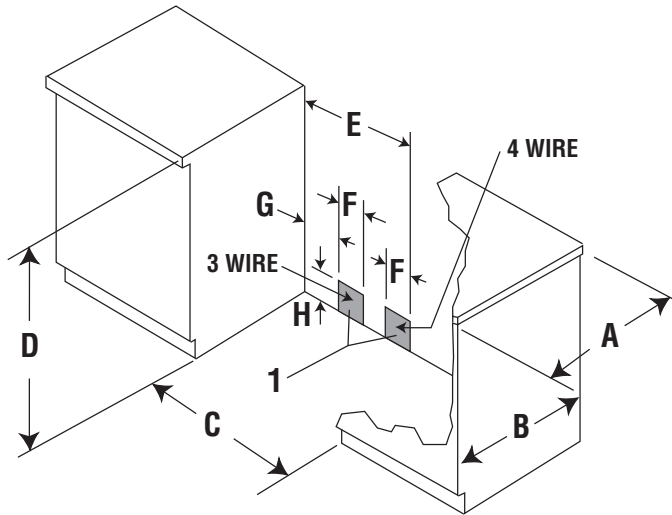


30"

FREE-STANDING RANGES

GEMINI DOUBLE OVEN RANGE



Dimensions

■	Inches	Centimeters
A	25	63.5
B	24	61.0
C <sup>2</sup>	30	76.2
D	36	91.4
E <sup>2</sup>	20	50.8
F	6	15.2
G	7	17.8
H	5 3/4	14.6
I	46 3/4	118.7
J	29 7/8	75.9
K <sup>3</sup>	26 5/16 to 27 1/4	66.8 to 69.2
L <sup>4</sup>	35 7/8	91.1

Notes:

1. Provide for either a 3-wire or 4-wire 120/208, 120/240 volt outlet per applicable cord in shaded area shown. Refer to installation instructions for proper positioning of outlet.
2. For Canadian models, cut-out width is 31" (78.7cm) and dimension E is 20 1/2" (52.1cm).
3. Excluding handle, dimension given is from wall to front of oven door, and will vary based on electric outlet receptacle installation.
4. May vary slightly depending on leveling leg adjustment.

**Important:** Because of continuing product improvements, Maytag reserves the right to change specifications without notice. Dimensional specifications are provided for planning purposes only. For complete details see installation instructions that accompany each product before selecting cabinetry, making cutouts or beginning installation.