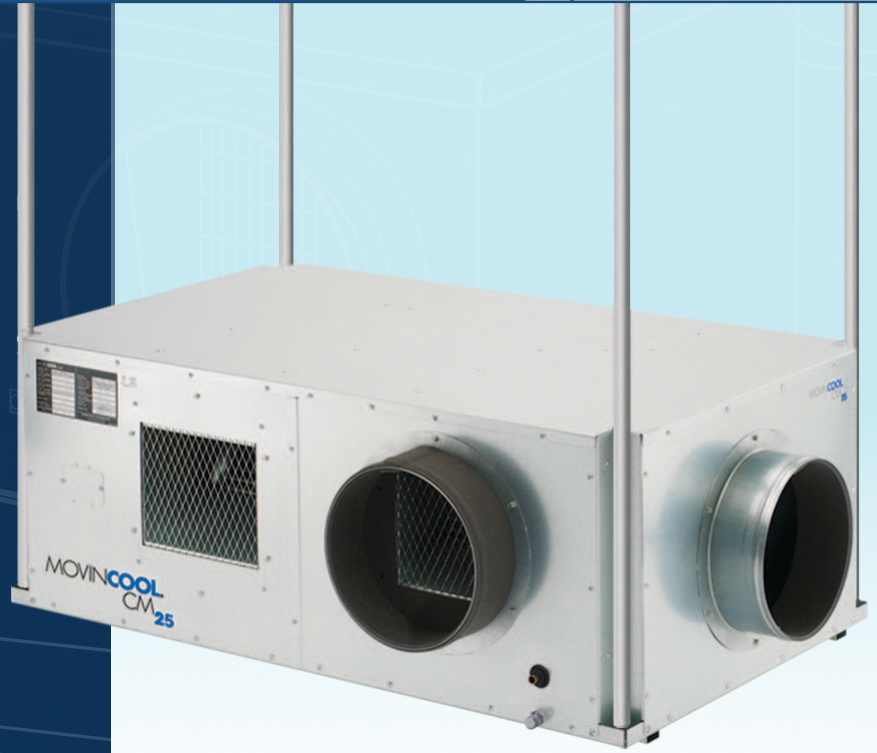


# Ceiling-Mount Series

SELF-CONTAINED SPOT AND PACKAGED AIR-COOLED UNITS



**MOVINCOOL**  
THE #1 SPOT COOLING SOLUTION



[www.movincool.com](http://www.movincool.com)

**DENSO**

# Ceiling-Mount Series

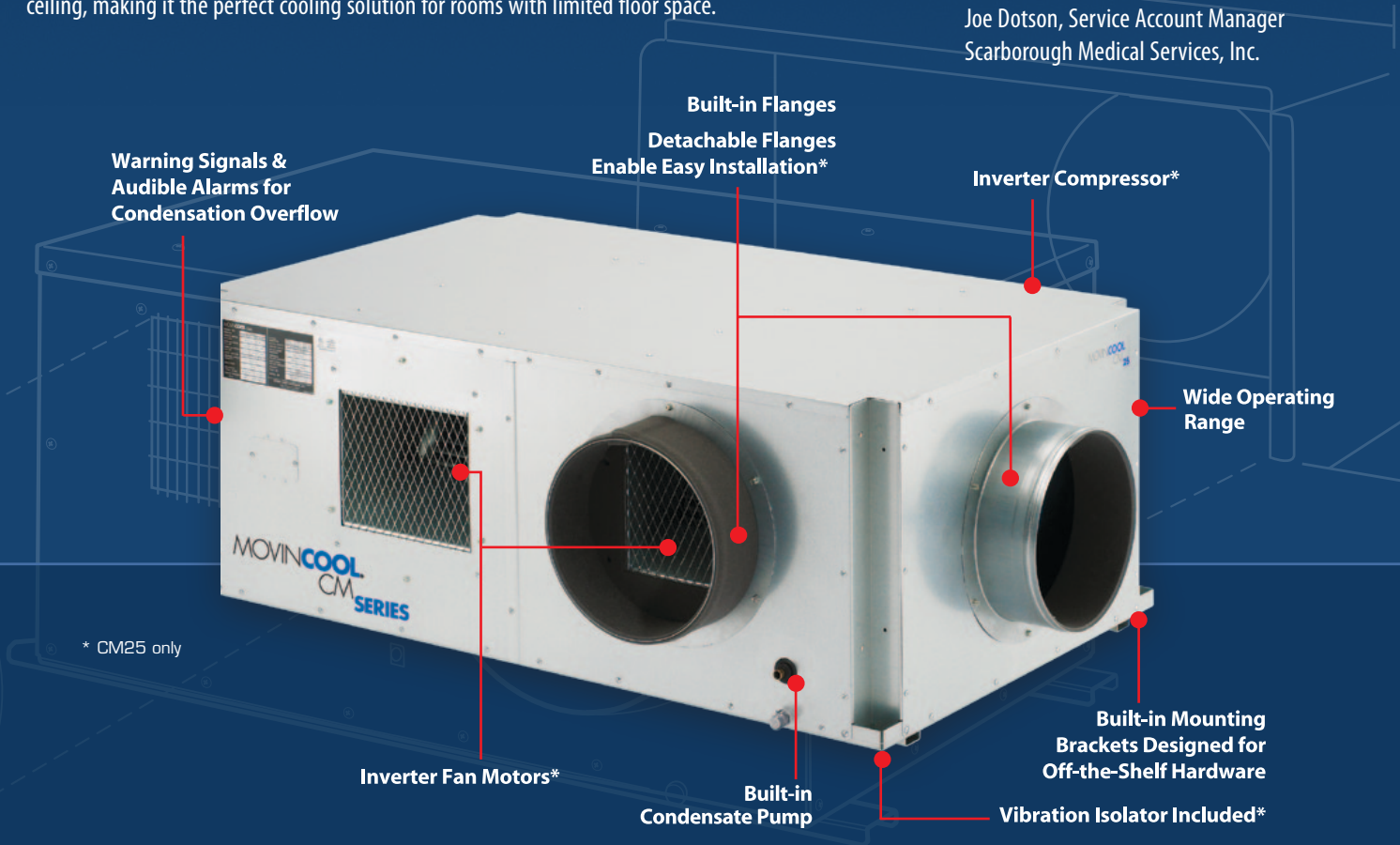
## Breakthrough High-capacity Cooling

With more than 30 years of spot cooling experience, MovinCool is uniquely qualified to deliver the perfect small-space solution - the CM Series of ceiling-mount air conditioners, including the CM12 spot air-cooled and CM25 packaged air-cooled models.

Featuring the lowest top-to-bottom profile in the industry, the CM Series fits into virtually any drop ceiling, making it the perfect cooling solution for rooms with limited floor space.

*"The health-care center has no more shut-downs due to overheating. The CM12 is perfectly designed for this type of application. It has the usual MovinCool quality, it's easy to install in tight spaces, and it has an affordable price tag."*

Joe Dotson, Service Account Manager  
Scarborough Medical Services, Inc.



### CM12 Key Features

- 10,500 Btu/h at 80°F 50% RH (Evaporator)  
95°F 50% RH (Condenser)
- 13,000 Btu/h at 95°F 60% RH
- 115V, 15 amps – no special electric required
- No floor space needed
- Can fit into tight ceiling spaces
- Compact, self-contained unit is easy to install
- Environmentally friendly design – R-410A refrigerant and RoHS compliant

### CM25 Key Features

- 25,000 Btu/h at 80°F 50% RH (Evaporator)  
95°F 50% RH (Condenser)
- High sensible cooling at 18,900 Btu/h
- Environmentally-friendly design – 14 SEER, variable-speed compressor, R-410A refrigerant and RoHS compliant
- Compact, self-contained unit is easy to install
- Wall mount controller offers advanced programmability and settings

### Where It's Used

- Offices
- Conference Rooms
- Off-season Spot Cooling
- Overhead Spot Cooling
- Supplemental Cooling
- Hotels
- Anywhere space is limited

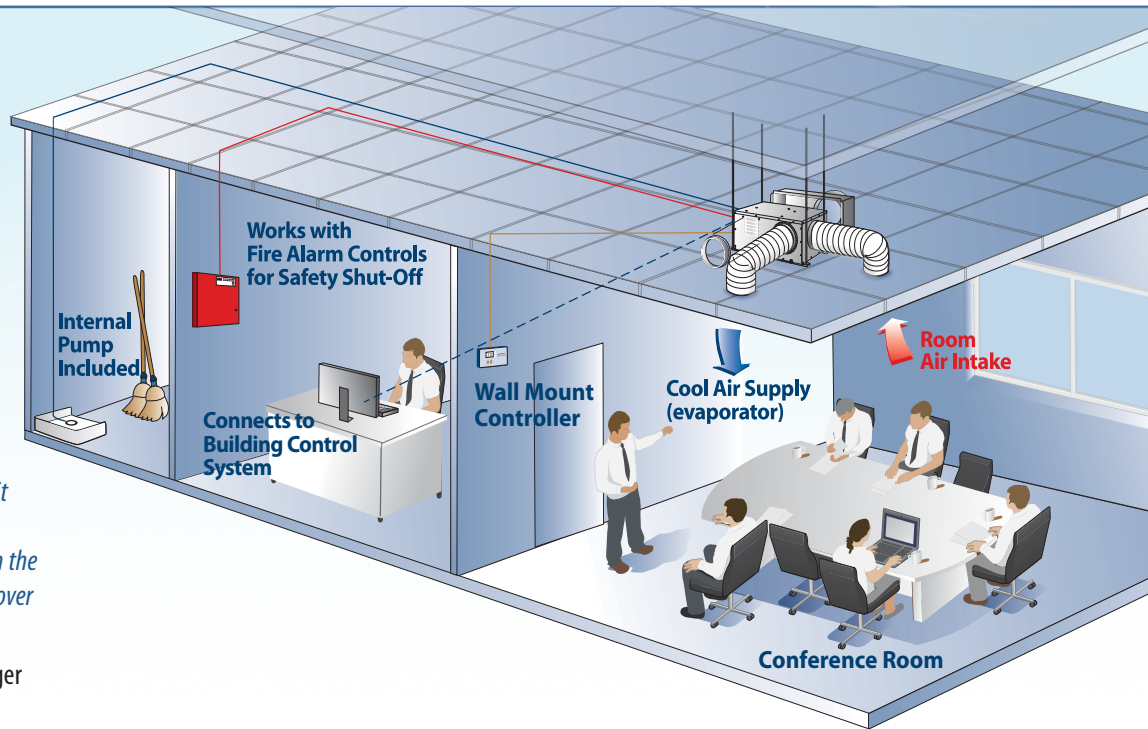
# Application

*"For an office, especially on a corner with windows facing the sun and equipment which give off heat, the MovinCool CM25 is definitely the way to go."*

Nick Best, Director, Cam Op & Editor  
New Creation Video Productions

*"The flexibility of the CM25's control options made it very easy for us to integrate the unit into our automation system. It allows us to remotely monitor, schedule, trend and alarm the points we want, so we have greater control over the unit."*

Matt Steding, Division Maintenance Manager  
Allina Hospitals and Clinics



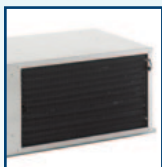
# Accessories



## CONDENSER AIR REMOVAL

If removing the exhaust is needed, MovinCool makes it easy. The flange can be used to attach a 10-inch (CM12) or 12-inch (CM25) diameter duct for more air exhaust options (duct not included).

#	PART NAME	CM12	CM25
1	Exhaust Air Flange	481170-0440	481170-0191



## CONDENSER AIR INTAKE

The air plenum can be used to prevent negative air pressure in the ceiling space when using the exhaust air-flange and duct to remove exhaust from the ceiling space. Simply attach a 10-inch (CM12) or 14-inch (CM25) diameter duct to the air plenum to bring in air from outside of the ceiling space (duct not included).

#	PART NAME	CM12	CM25
2	Condenser Intake Air Plenum	481769-0221	481769-0240
2A	Condenser Filter Kit (not shown)	N/A	484409-0130



## WALL THERMOSTAT

Weekday & weekend programmable digital millivolt thermostat.

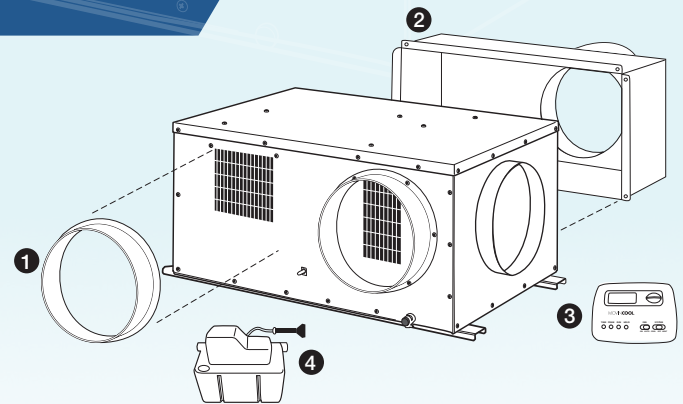
#	PART NAME	CM12	CM25
3	Wall Thermostat	LA484500-3430	Included*



## AUTO CONDENSATE REMOVAL

Condensate pump with 4-foot lift capacity is included with all the units. If more than 4-foot lift capacity is needed, simply use this optional condensate pump kit to boost lift capacity to 17 feet.

#	PART NAME	CM12	CM25
4	Condensate Pump Kit	N/A	GX484789-0180

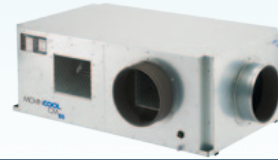


### INDIVIDUAL PART DESCRIPTIONS MOVINCOOL CM12 and CM25

1 Exhaust Air Flange	10" or 12" diameter gray metal flange with mounting screws.
2 Condenser Intake Air Plenum	Gray metal plenum with 10" or 14" diameter return air flange. Includes mounting screws.
2A Condenser Filter Kit (not shown)	Optional filter kit for condenser air intake for use in heavily dusty environments.
3 Wall Thermostat	Weekday & weekend programmable digital millivolt thermostat.
4 Condensate Pump Kit	230V pump kit to boost lift capacity to 17 feet. Includes installation hardware.

\* Wall Mounted Controller with LCD Display

# Ceiling-Mount Series Specifications



MOVINCOOL TECHNICAL SPECIFICATIONS		CM12	CM25*
Electronic Features	Operation Control	Millivolt Thermostat (Not Included) Electronic	Wall Mounted Controller Programmable
Electrical Characteristics	Voltage Requirement Min. - Max. Voltage Recommended Fuse Size	115V, 1 Phase, 60 Hz 105-125 15 amps	208/230V, 1 Phase, 60 Hz 198-250 20 amps
Cooling Capacity and Power Consumption Evaporator: 80 °F, 50% RH Condenser: 95 °F, 50% RH	Total Cooling Capacity Sensible Cooling Capacity Power Consumption Current Consumption	10,500 Btu/h <sup>1</sup> 7,200 Btu/h <sup>1</sup> 1.23 kW <sup>1</sup> 11.2 amps <sup>1</sup>	25,000 Btu/h <sup>2</sup> 18,000 Btu/h <sup>2</sup> 2.90 kW <sup>2</sup> 12.6 amps <sup>2</sup>
Evaporator: 72 °F, 50% RH Condenser: 95 °F, 50% RH	Total Cooling Capacity Sensible Cooling Capacity Power Consumption Current Consumption	9,300 Btu/h <sup>1</sup> 7,000 Btu/h <sup>1</sup> 1.22 kW <sup>1</sup> 11 amps <sup>1</sup>	25,000 Btu/h <sup>2</sup> 18,900 Btu/h <sup>2</sup> 3.20 kW <sup>2</sup> 15 amps <sup>2</sup>
Evaporator	Fan Type Max. Air Flow - high/low Max. External Static Pressure	Centrifugal 324/228 CFM <sup>1</sup> 0.16 IWG	Centrifugal 950/800 CFM <sup>2</sup> 0.60 IWG
Condenser	Fan Type Max. Air Flow - high/low Max. External Static Pressure	Centrifugal 700/370 CFM 0.12 IWG	Centrifugal 1,600/1,300 CF 0.50 IWG
Compressor	Type	Hermetic Rotary	Hermetic Swing Inverter
Refrigerant	Type	R-410A	R-410A
Dimensions	W x D x H (without flange) W x D x H (with flange)	32 x 20 x 15.2 in 35 x 23 x 16 in	53 x 32 x 20 in 57 x 36 x 20 in
Net Weight/Shipping Weight		123/137 lbs	310/353 lbs
Condensate Pump Capacity (Internal pump included)	Pump Rate Head	5 gal/h 4 ft	5 gal/h 4 ft
Operating Conditions	Evaporator Condenser	65° - 95°F, 50% RH 65° - 113°F	60°F - 95°F, 50% RH 50°F - 113°F
Max. Duct Length	Cold Duct Hose Hot Duct Hose	20 ft <sup>3</sup> 10 ft <sup>3</sup>	120 ft <sup>3</sup> 90 ft <sup>3</sup>
Max. Sound Level	Under ceiling tile with evaporator duct	52 dB(A)	55 dB(A)

<sup>1</sup> Measured with two 6 ft ducts with one 90° bend each, supply grill and return grill with filter (0.16 IWG external static pressure) (ducts not included)

<sup>2</sup> Measured with two 20 ft ducts with one 90° bend each, supply grill and return grill with filter (0.30 IWG external static pressure) (ducts not included)

<sup>3</sup> Confirm pressure drop of duct, grills and filter with manufacturer specifications.

\* Specification information shown with 230V

All specifications subject to change without notice. Standard warranty includes 12 months on entire unit and 36 months on the compressor. Visit [www.movincool.com/reg](http://www.movincool.com/reg) for details on MovinCool's industry-best free Extended Warranty Program which includes both parts and labor on units. All models feature compressor overload relay and fan motor protection. All models also feature compressor short-cycle protection, return air thermostat, automatic restart and built-in condensate pump. Only the CM12 is 50 Hertz (Hz) compatible with a slight performance decrease from specifications listed above.

For more information visit [www.movincool.com](http://www.movincool.com)

**MOVINCOOL**  
THE #1 SPOT COOLING SOLUTION

DENSO PRODUCTS AND SERVICES AMERICAS, INC.  
3900 Via Oro Ave, Long Beach, CA 90810  
**800-264-9573**  
[www.movincool.com](http://www.movincool.com)

©2015 DENSO PRODUCTS AND SERVICES AMERICAS, INC.  
MovinCool, SpotCool and Office Pro® are registered trademarks of DENSO Corporation.

360-0415-CMS  
D1946.334