

CL241WBV

34.5" x 23.88" x 23.38" (H x W x D)

French door dual zone wine and beverage center for built-in or freestanding use, with seamless SS trimmed low-e glass doors

Highlights:

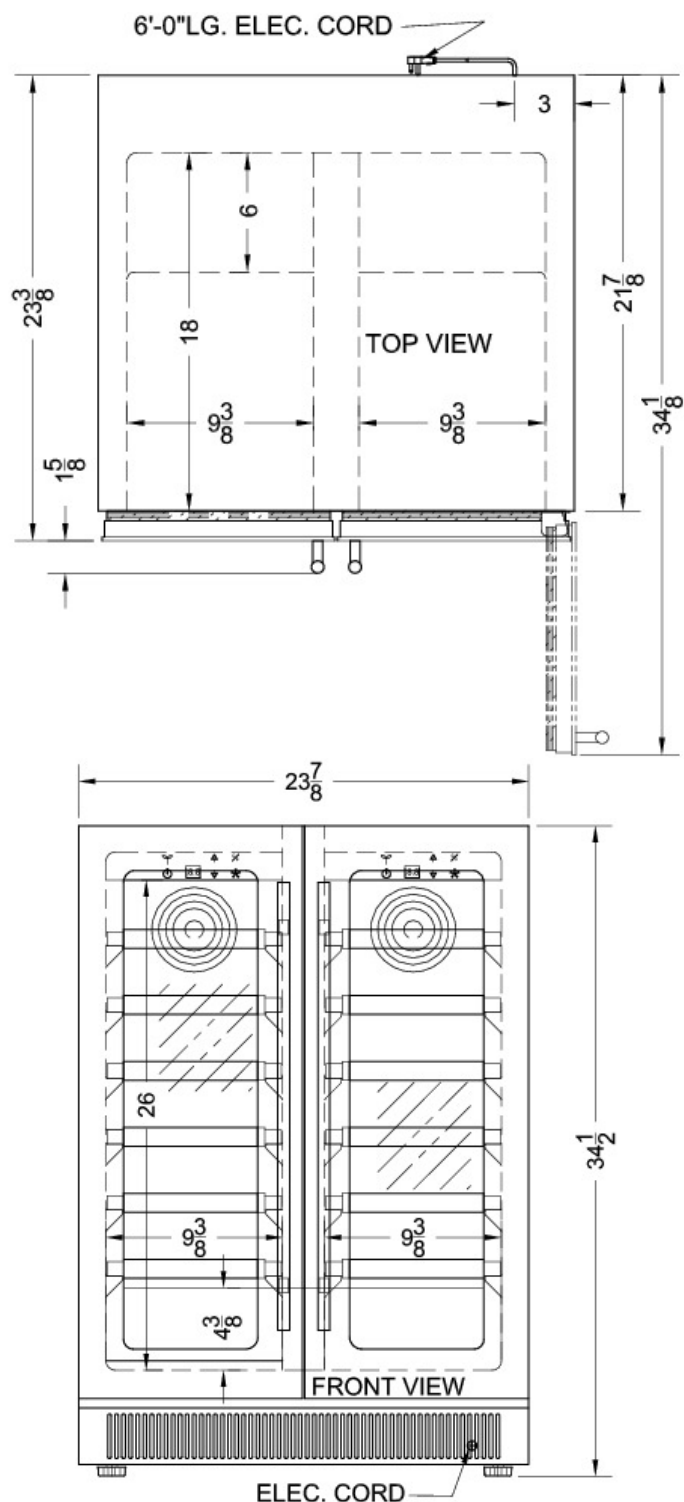
- Flexible design allows built-in or freestanding use in 24" spaces
- Seamless stainless steel trim on glass doors bring elevated style under the counter
- Combination of spill-proof glass shelves and stainless steel trimmed wine shelves let you arrange wine and beverages in any configuration
- Gently tinted low-e glass doors offers added protection from UV rays



Built-in capable	Make the best use of space by installing your appliance under the counter
Fully finished black cabinet	Allows the unit to be used freestanding
Low-e glass doors	Gently tinted glass provides a full view of stored wine while protecting your collection with energy efficient low-e glass
Seamless stainless steel trim	Glass is framed by seamless 304 grade stainless steel
Digital thermostats	Set and adjust two temperature zones separately with easy-to-use digital controls that display the temperature in Celsius or Fahrenheit
Two temperature zones	Independent zones let you accommodate wine and beverages at their proper storage temperatures
Stainless steel trimmed wire shelves	Jet black wine shelves slide out easily for wine storage, with a seamless stainless steel trim to finish the look
Adjustable glass shelves	Spill-proof glass shelves make it easy to store and display bottles and cans
White LED lighting	Unique white light offers elegant illumination for the jet black interior
Automatic defrost	Reduced user maintenance with automatic defrost operation

CL241WBV Specifications:

Height	34.5"
Width	23.88"
Depth	23.38"
Ext Depth with Handle	25.0"
Interior Height 1	26.0"
Interior Width 1	9.38"
Interior Depth 1	18.0"
Interior Height 2	26.0"
Interior Width 2	9.38"
Interior Depth 2	18.0"
Comp Step Height	4.38"
Comp Step Width	9.38"
Comp Step Depth	6.0"
Shipping Weight	140.0 lbs.
Weight	119.0 lbs.
Amps	2.0
Canadian Electrical Safety	CSA
US Electrical Safety	CSA
Voltage/Frequency	115 V AC/60 Hz
Reversible	No
Door Swing	French
Shelf Quantity	9
Adjustable Shelf	true
Shelf Type	Glass and Wood
Wine Bottle Holder	true
Defrost Type	Automatic
Depth with door at 90°	34.13"
Thermostat Type	Digital
Light	true
Fan Type	Interior and Exterior
Low Side PSI	103.0
Level Legs Quantity	2
High Side PSI	270.0
Refrigerant Type	R134a
Freon Oz	4.23
Compressor Warranty	5 Years
Parts/Labor Warranty	1 Year



Summit Appliance Division, Felix Storch, Inc.
 770 Garrison Ave • Bronx, NY 10474
 Phone: 718-893-3900 • Fax: 718-842-3093
 Email: info@summitappliance.com