

Cooktop/Range Models: DRT366S, ER36G and ER36GI



Grill Placement and Use Grill Models: AGDRT12 and AGRG12

INSTRUCTIONS

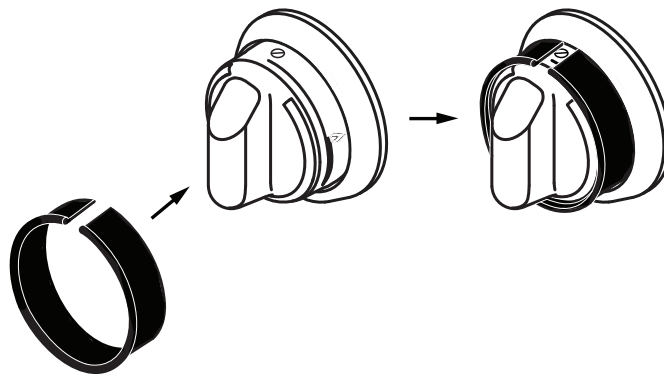
- ⚠ WARNING:** Do not touch the grill when hot.
- ⚠ WARNING:** Do not use water on grease fires. A violent steam explosion may result. Smother any flames with a lid, cookie sheet or flat tray. Use baking soda or a foam extinguisher to extinguish flaming grease. Be careful to avoid getting burned.
- ⚠ WARNING:** This grill has a non-stick coating. Non-stick coatings, when heated, can be harmful to birds. Remove birds to a separate, well-ventilated room during cooking.
- ⚠ CAUTION:** This grill kit comes with two extra knobs marked with the words **MAX GRIDDLE**. They must be installed according to these instructions before use to prevent damage to the grill.
- ⚠ CAUTION:** Place the grill only in the position shown in these instructions. Do not turn the burners under the grill higher than the **MAX GRIDDLE** setting. Setting the burner flames too high or putting the grill in the wrong position may damage it permanently.

Initial Set Up

Before using the griddle for the first time...

STEP 1 Decide which side of the cooktop/range you want to use the griddle on. Remove the two knobs on the far right or the far left of the control panel based on the side the griddle will be used. Leave all other knobs in place.

NOTE: If you have difficulty removing any of the knobs, a rubber grip (strip) is included with the kit. To use, peel the protective backing off of the rubber strip and wrap the adhesive side around the knob as shown. The grip can be peeled off and reapplied to the other knobs.



Knob Grip Installation

continued...

Grill Placement and Use

Initial Set Up (continued)

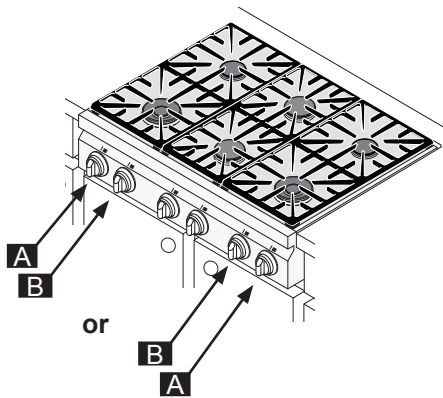
STEP 2 Put the new knobs from the kit, with the words **MAX GRIDDLE** on them, on the valve shafts in place of the knobs removed in step 1. The knob with the shortest space between the flame icon and the simmer icon goes on the valve stem for the standard burner **A**. The other knob installs on the valve stem for the SimmerSear (dual) burner **B**. When installing the knobs, align the “D-shaped” opening on the back of the knob with the end of the valve shaft. Carefully push the knob on until it stops. The old knobs may be discarded.



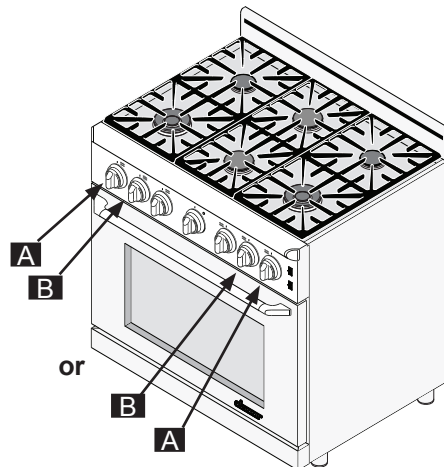
A New standard burner knob with short space between icons



B New SimmerSear (dual) burner knob with wide space between icons



DRT366S Cooktop



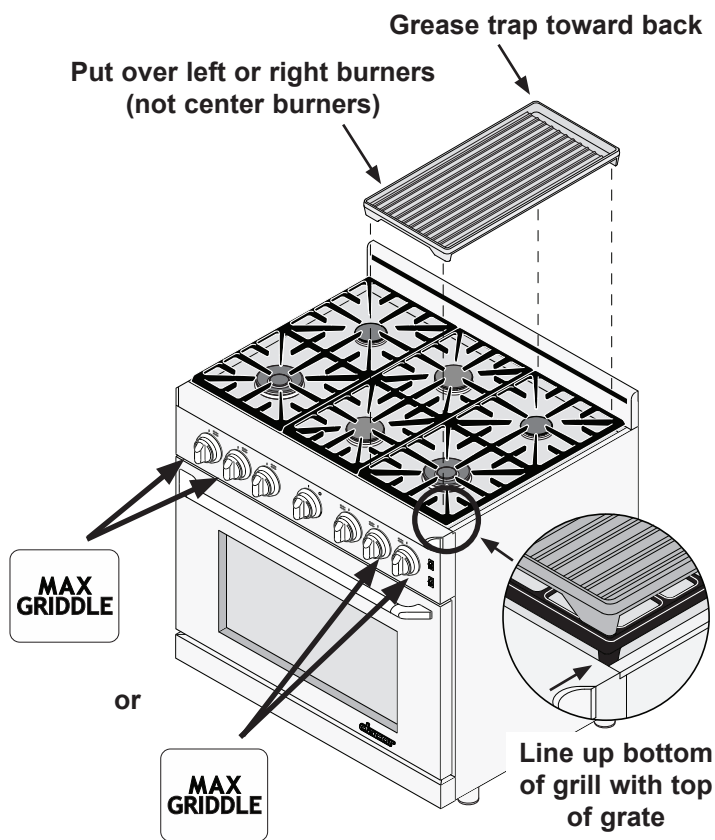
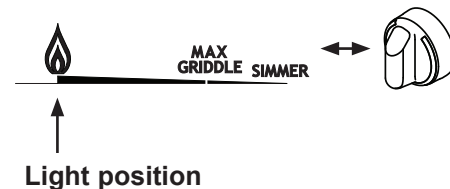
ER36G and ER36GI Range

STEP 3 Wash the griddle in hot soapy water. Rinse it and allow it to dry thoroughly.

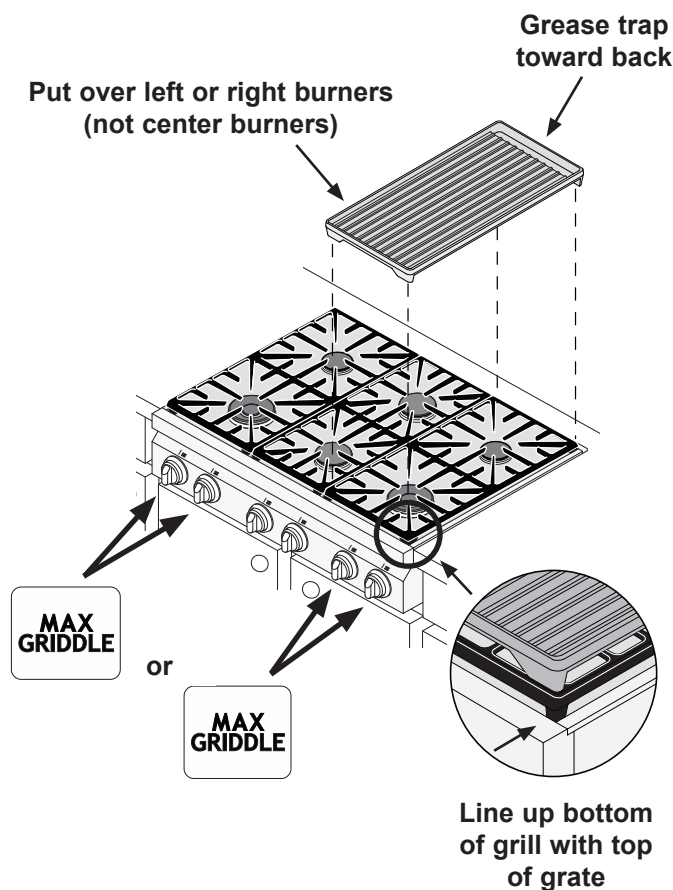
Grill Placement and Use

Instructions for Use

- STEP 1** Make sure all burners are off and the cooktop/range is cool to the touch. Put the grill over the top of the grate on the side of the appliance with the knobs that have the **MAX GRIDDLE** icons. The grease trap goes toward the back. Fit the tabs that stick out of the bottom of the feet into the inside corners of the grate. When correctly installed, the grill will rest securely about 1/2" above the top surface of the grate. It may rock back and forth slightly, which is normal.
- STEP 2** Set one of the burners under the grill to the light (high) position. Once lit, immediately turn the knob to the **MAX GRIDDLE** position, or lower if desired. **DO NOT** keep the burner knobs higher than the **MAX GRIDDLE** setting after they are lit!
- STEP 3** Repeat step 2 for the other burner under the grill.
- STEP 4** During cooking be careful with metal utensils on the surface because they can scratch the non-stick coating. See below for cleaning instructions.



ER36G and ER36GI Range



DRT366S Cooktop

Cleaning the Grill

After each use, wash the grill thoroughly in hot soapy water to avoid stains from grease build-up. The grill is coated with a non-stick coating for easy cleaning. Warm water and liquid detergent are all that are needed for cleaning. Remove stubborn spots with a non-abrasive plastic mesh pad. To prevent scratching, do not use abrasives or abrasive cleaners.

