

AGA Integrated Dual Fuel Module



Model # TCDC



The AGA Integrated Dual Fuel Module is designed for those who love the many benefits of their cast iron AGA range and wish to incorporate the joys of open flame and conventional ovens. This integrated solution attaches to any 3-oven AGA Total Control or 3-oven AGA Dual Control.

Want the ultimate AGA? Use the Integrated Module to create a 7-oven cooking experience!

- Iconic AGA signature look with cast iron doors and cast iron front.
- Four-ring gas burner provides instant power and a rapid response for any type of cooking.
- The 4 gas burner range top features two 6,150 BTU, an 11,000 BTU and one 12,000 BTU gas burners – available in natural gas and liquid propane.
- Special oven linings - to save on cleaning time, the ovens have a specially developed lining which helps them keep themselves clean during cooking.
- Boasts one Conventional Oven with Rapid Response Electric Grill/Broiler, a Convection Oven with fan.

ORDERING DETAILS	NATURAL GAS	PROPANE
Stocking Colors		
Black	TCDCNGM-BLK	TCDCLPM-BLK
Claret	TCDCNGM-CLT	TCDCLPM-CLT
Cream	TCDCNGM-CRM	TCDCLPM-CRM
White	TCDCNGM-WHT	TCDCLPM-WHT
Signature Colors*		
Aqua	TCDCNGM-AQU	TCDCLPM-AQU
Aubergine	TCDCNGM-AUB	TCDCLPM-AUB
British Racing Green	TCDCNGM-BRG	TCDCLPM-BRG
Dark Blue	TCDCNGM-DBL	TCDCLPM-DBL
Duck Egg Blue	TCDCNGM-DEB	TCDCLPM-DEB
Heather	TCDCNGM-HEA	TCDCLPM-HEA
Lemon	TCDCNGM-LEM	TCDCLPM-LEM
Pistachio	TCDCNGM-PIOS	TCDCLPM-PIOS
Pearl Ashes	TCDCNGM-PAS	TCDCLPM-PAS
Pewter	TCDCNGM-PWT	TCDCLPM-PWT
Rose	TCDCNGM-ROS	TCDCLPM-ROS

*12-15 week lead time for fulfillment

Cast iron range is coated in hygienic, easy-to-clean vitreous enamel and is available in 15 colors



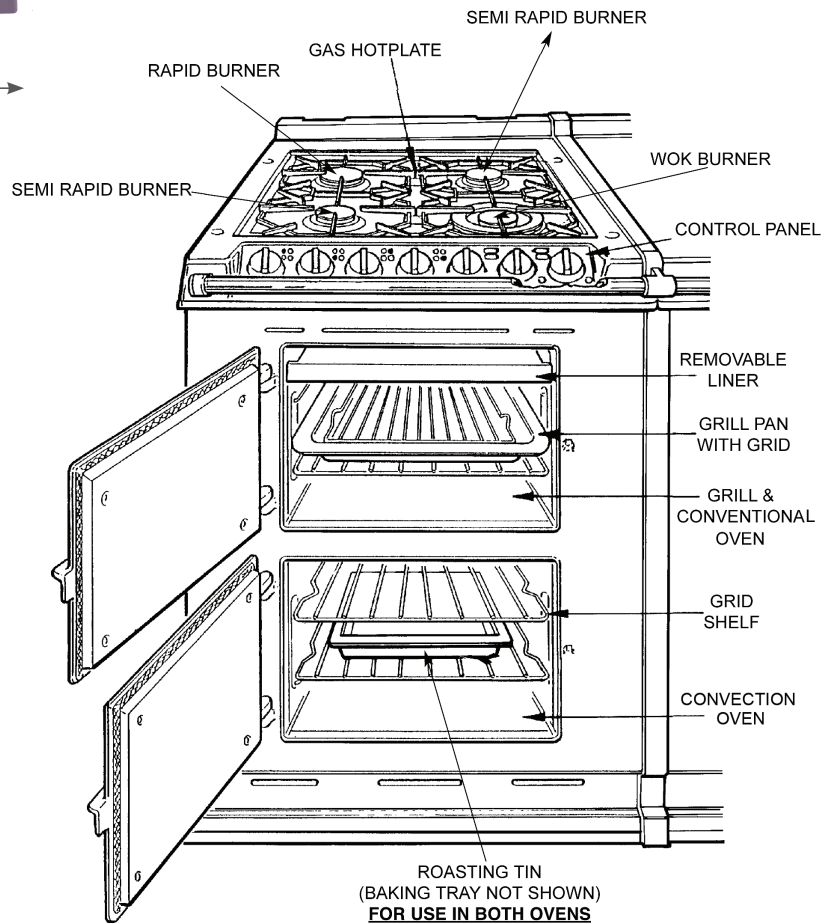
AGA Integrated Dual Fuel Module



Model # TCDC



Technical Specifications	
Overall Dimensions	36"H x 23½"W x 27½"D
1. Gas Range Top	(4) 10" x 10" Burners
2. Conventional Oven With Broiler	8½"H x 13¾"W x 19"D
3. Convection Oven With Fan	10"H x 13¾"W x 17"D
Weight	284 lbs
Shipping Weight	393 lbs
Electrical Requirements	240v, 30amp, 60Hz
Fuel/Power	Natural Gas or Liquid Propane Burners, Electric Ovens
Warranty	1 Year Limited Warranty on all parts and labor
Shipping Instruction	Ships fully assembled



DUAL FUEL & MULTI-USE

The integrated range brings the versatility of dual-fuel cooking into any kitchen all the while exemplifying the AGA signature look.

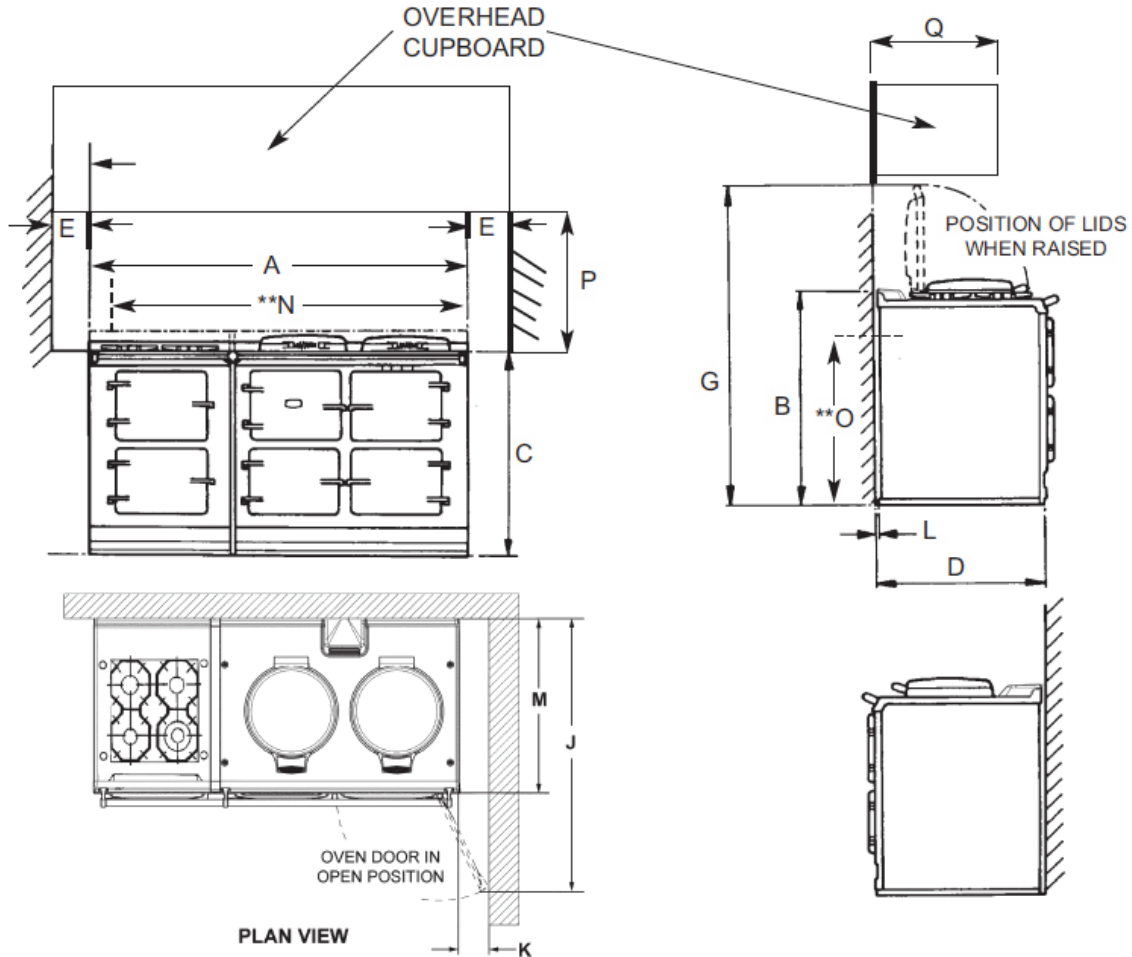


AGA Integrated Dual Fuel Module

Model # TCDC



Installation



Range Dimensions

When surveying for a range cooker installation the actual clearance required for the 'body' of the appliance should be increased overall by 3/8" (10mm) beyond the figures quoted. This allows safe margin to take into account the natural dimensional variations found in major castings. In particular the width across an appliance recess could be critical.

	A	B	C	D	E	G	H	J	K	L
mm	1589	948	910	679	75	1330	756	1125	116	3
ins	62 ⁹ / ₁₆	37 ³ / ₁₆	35 ⁷ / ₁₆	26 ³ / ₄	3	51 ¹ / ₄	29 ³ / ₄	44 ¹ / ₄	4 ¹ / ₂	1 ¹ / ₈

Location

The side wall clearance above the hob shall be greater than 3". Surfaces over the top of the range must not be closer than 30" and must not exceed 13" in depth. The vent slots in the back of the top plate (or shroud) must not be obstructed.

	M	N	O	P	Q
mm	698	1533	800	760	330
ins	27 ¹ / ₂	60 ⁵ / ₁₆	31 ¹ / ₂	30	13

Note: It is essential that the supply cable is routed away from any hot surfaces i.e. hot flue pipes. In the interests of safety, due consideration must be given to the protection of the electric cable to the Module/ Companion.

The AGA TC/DC Integrated Dual Fuel Module requires a 30 amp power supply and must be connected to the mains with a cable which complies with the latest edition of the Local and National Wiring Regulations.

Remember that an excess of cable length is required for the possible withdrawal of the range.

A electrical socket type 14-30R must be provided within 5 feet of the left hand side of the range and accessible for disconnection.

DO NOT position socket above or behind the range.

An easily accessible manual shut off gas valve must be fitted before the metal flexi gas line supply to the range. DO NOT fit valve behind the range. Any opening in the wall behind the appliance and in the floor under the appliance must be sealed.

Leveling

The AGA TC/DC Integrated Module (Gas Hob) is designed to stand on a flat surface, however any unevenness may be overcome by packing under the corners of the plinth with a suitable non-combustible material, (up to 1/8").