



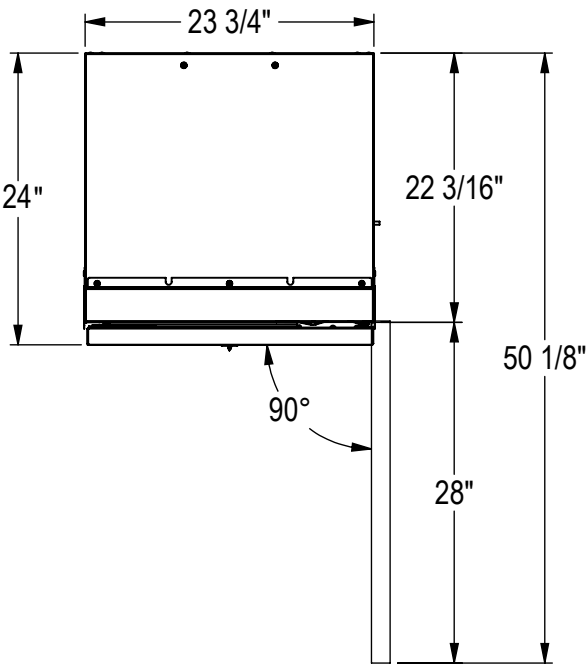
QUICK FEATURES

- Ready to accept custom or stainless steel panel
- Touch-screen control streamlines the user experience. Customize to your temperature preference in 1° increments. Access settings for lighting, Sabbath mode and more with a single touch.
- Brightly illuminated by white roll-on theatre lighting
- Sleek stainless steel interiors
- Open pull out bins provide quick access to frozen goods

PRODUCT SPECIFICATIONS

Appliance Dimensions	Exterior Width	23-3/4"
	Exterior Depth	24"*
	Exterior Height	83-11/16"
Required Cutout Dimensions	Cutout Width	24"
	Cutout Depth	25"
	Cutout Height	84"
Depth with Door Open	50"	
Product Weight	448 lbs	
Capacity	12.6 cu. ft.	
Electrical Requirements	Electrical Supply	115V, 60 Hz., 1 Phase, 2.3 amps
	Electrical Service	15 amp dedicated circuit
	Power Cord/ Receptacle	NEMA 5-15 plug, 5' /3 prong grounding-type

**Less panel. With typical 3/4" overlay panel installed, depth becomes 24-3/4"*

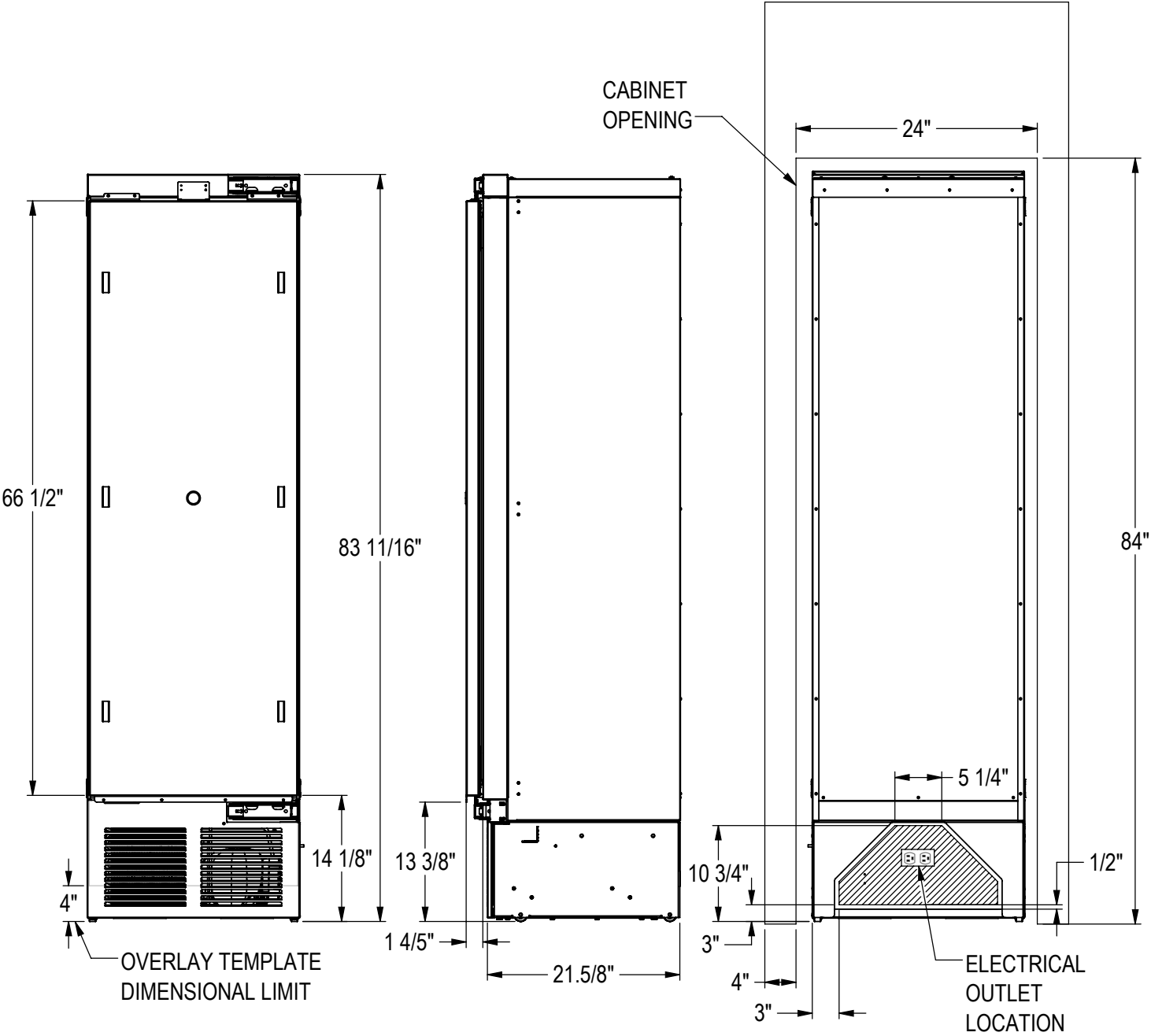


TEMPERATURE RANGES

Main Compartment	Factory Set to 0° (Range -10°-10°F)
------------------	-------------------------------------

AVAILABLE MODELS

CR24F-1-2L	Freezer, solid overlay ready, hinged left
CR24F-1-2R	Freezer, solid overlay ready, hinged right



ACCESSORIES

- Dual installation kits
- Stainless steel exterior side finishing panels
- Stainless steel door panels with Perlick Pro Handle

Perlick accessories are available for purchase through an authorized Perlick dealer. For a full list of accessories and to find a dealer near you, visit perlick.com/residential.