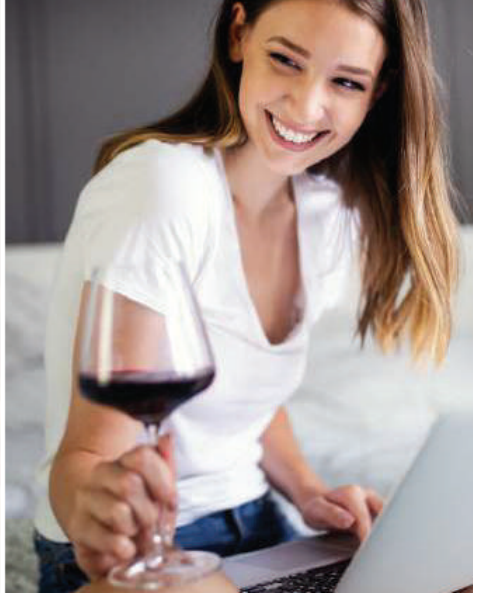




THE NEXT LEVEL IN REFRIGERATION

XO

ENTERTAINING OR SIMPLY RELAXING...  
XO FITS YOUR LIFE



LUXURY. THOUGHTFUL FEATURES. LASTING COMMITMENT.



At XO, our over thirty years of appliance knowledge is used to create luxury products developed and perfected from an understanding of what is important to you.

Our team of experts is always accessible to our customers – from choosing and purchasing their appliances through installation and servicing. This is what ensures the XO experience.

We'll take care of the details so you can focus on relaxing into the luxury lifestyle you're looking for, and our appliances help provide. Experience the XO luxury lifestyle.

# THE MOST POPULAR FEATURES



## FULL EXTENSION SHELVES & RACKS

Clear glass shelves and vibration dampened wine racks extend fully while loaded making it easy to store and find everything at a glance.



## SECURE DOOR LOCKS

Keep contents safe and uninvited guests out.



## ZERO-CLEARANCE HINGES

Ensure an easy installation and flush fit under counters.



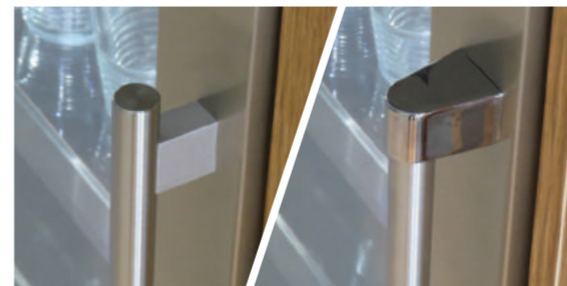
## DIGITAL CONTROL PANEL

Control temperature for chilled or icy cold beverages, adjust lighting and more. It's easy with the XO intuitive control panel.



## ELEGANT LED ACCENT LIGHTING

Create the mood you're looking for with tri-color interior lighting in cool Midnight Blue, clean Theater White or warm Honey Amber.



## 2 HANDLE STYLES INCLUDED

Choose between sophisticated Designer or attractive Pro Style handles. Both are included, so you can match your decor with ease.



Some features not available on all models



## BEVERAGE CENTERS

24" | 15"



EVERYTHING AT A GLANCE  
AND AT YOUR FINGERTIPS



## WINE COOLERS

24" | 15"



RED, WHITE OR SPARKLING...  
ONE PERFECT PLACE FOR STORING & SERVING



## BEVERAGE WINE COMBOS

30" | 24"



ADD FAMILY AND FRIENDS...  
MIX WELL

THE RIGHT CLIMATE FOR BOTH  
UNDER LOCK AND KEY



## WINE + WEED PRESERVATION SYSTEM

TEMPERATURE & HUMIDITY REGULATED 24"



TAKE TIME OUT TO CHILL  
AND RELAX



## OUTDOOR

REFRIGERATOR | DRAWER | ICE MAKER 24" | 15"







## REFRIGERATED DRAWERS

24"



PULL, GRAB AND GO...  
ENJOY



# COLUMNS

BEVERAGE | WINE | TRIPLE ZONE OVERLAY | 24"



RAISE THE BAR

# GOURMET CUBE ICE MACHINES

INDOOR | OUTDOOR | 15"



# CHEWABLE NUGGET ICE MACHINES

INDOOR | 15" | ADA + STANDARD HEIGHT



# REFRIGERATION PRODUCT OFFERING

## BEVERAGE CENTERS

24"



Stainless + Glass   Full Stainless   Black SS + Glass   Black Glass   Overlay + Glass   Full Overlay   Seamless Overlay + Glass

## BEVERAGE CENTERS

15"



Stainless + Glass   Full Stainless   Black SS + Glass   Overlay + Glass   Full Overlay

## 70" TALL COLUMN UNITS

### BEVERAGE CENTERS

24"



Stainless + Glass   Black Glass

### 1 ZONE WINE



Stainless + Glass   Black Glass

### 2 ZONE WINE



Stainless + Glass   Black Glass

### 3 ZONE WINE



Built-In Overlay + Glass

## WINE COOLERS | DUAL ZONE

24"



Stainless + Glass   Black SS + Glass   Black Glass   Overlay + Glass   Full Overlay   Seamless Overlay + Glass

## WINE COOLERS | SINGLE ZONE

24"



Stainless + Glass

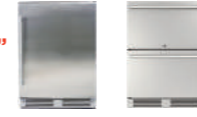
15"



Stainless + Glass   Black SS + Glass   Overlay + Glass   Full Overlay

## OUTDOOR STAINLESS REFRIGERATION

24"



Outdoor Refrigerator   Outdoor Refrigerated Drawers

15"



Outdoor Refrigerator   Outdoor Ice Maker (Cube)

## WINE + WEED PRESERVATION SYSTEM

24"



Stainless + Glass   Black Glass   Overlay + Glass

## COMBINATION | BEVERAGE WINE

30"



Stainless + Glass   Overlay + Glass   Stainless + Glass   Black SS + Glass   Black Glass   Overlay + Glass

24"



Stainless + Glass   Black SS + Glass   Black Glass   Overlay + Glass

## REFRIGERATED DRAWERS

24"



Full Stainless   Full Overlay   Outdoor Stainless

## GOURMET CUBE ICE MAKERS

15"



Full Stainless   Full Overlay   Clear Cube

## CHEWABLE NUGGET ICE MAKERS



Full Overlay   ADA   Nugget Ice

OPTION: All XO Ice Makers are available with or without factory installed drain pump

OPTION: Stainless Steel Door Panels available for Nugget Ice models





THE NEXT LEVEL IN REFRIGERATION



For detailed warranty and product information including model numbers, specifications and user manuals visit [xoappliance.com](http://xoappliance.com)

WORLD CLASS SERVICE | COMPREHENSIVE WARRANTIES  
OUR LASTING COMMITMENT TO YOU  
[xoappliance.com](http://xoappliance.com) | 800.966.8300

