

# Futuro Futuro

## Care & Maintenance Manual

### Cleaning - Light Bulbs - Metal Filters - Carbon Filters

## MAINTENANCE AND CLEANING

Constant maintenance ensures the correct operation and efficiency of the appliance over time. Special attention should be paid to the metal grease-trapping filters and the charcoal filters. Frequent cleaning of the filters and their supports will ensure that fats and grease do not accumulate on the range hood, with the consequent risk of fire.

### 1. METAL GREASE-TRAPPING FILTERS

These trap the fat and grease particles suspended in the air, and therefore should be washed every month in hot water and detergent, without bending them. Wait until they are completely dry before repositioning them. To remove and replace these filters, see the instructions in point H1. This operation should be performed at regular intervals.

### 2. CHARCOAL FILTERS

These trap the odours present in the stream of air that passes through them. The air is purified by passing a number of times through the filters and being recirculated into the kitchen. The charcoal filters cannot be cleaned, and should be replaced on average every 3-4 months (according to use). To replace the charcoal filters, see the instructions in point H2.

### 3. CLEANING THE OUTSIDE OF THE APPLIANCE

It is advised to clean the external hood surfaces at least every 15 days in order to avoid that oily or greasy substances affect the steel surfaces.

The outside of the range hood should be cleaned using a damp cloth and neutral liquid detergent or denatured alcohol.

In case of fingerprint-less finish (fasteel) clean only with water and neutral soap using clean with a soft cloth, rinse and wipe dry thoroughly. Do not use products that contain abrasive substances, rough cloths or cloths specifically designed for cleaning steel. Using abrasive substances or rough cloths will inevitably damage the finish of steel. The steel surface will be irrevocably damaged if the instructions above are not complied with. Keep these instructions together with the instructions for use of your hood.

The manufacturer accepts no liability for any damage caused by non-compliance with the instructions above.

### 4. CLEANING THE INSIDE OF THE APPLIANCE

The electrical parts or parts of the motor assembly inside the range hood must not be cleaned using liquids or solvents.



**Do not use abrasive products.**

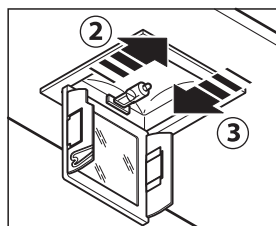
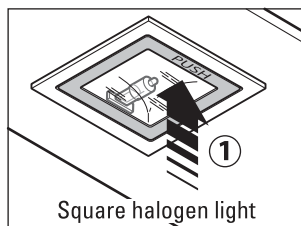
**All the above operations must be performed after having disconnected the appliance from the mains power supply.**

## LIGHTING ASSEMBLY AND REPLACEMENT

### HALOGEN SPOTLIGHT - SQUARE TYPE

How to replace a square halogen light:

- Check that the equipment is disconnected from the power supply.
- Open the panel completely till 90° (see figure) pressing the PUSH button**
- Replace the lamp with a similar one (halogen, max 20 W, 12 Volt, G4 connection).
- Close the panel. If the panel does not close correctly repeat the operation at point b.



### LED SPOTLIGHT

Some range hood models are equipped with LED lighting; these modules are designed for extremely long life, and typically do not require replacement.

However, if a need for replacement arises, please contact us for instructions, since the LED replacement procedure varies from model to model.

### 3. FLUORESCENT TUBE

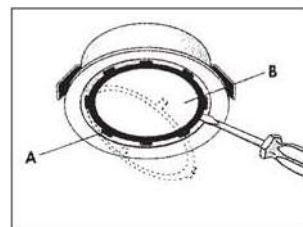
Replacing the fluorescent tube:

- Disconnect the device from the mains;
- Unscrew the fixing screws and remove the bottom panel;
- Remove the fluorescent tube, by rotating through 90°, and replace it with one of similar features (8W-13W-21W-28W according with the model);
- Reconnect the device to the mains.

### HALOGEN FIXTURE - ROUND

This is an older style light fixture, included here for reference. To replace the halogen bulb in a round fixture:

- While supporting the glass so it doesn't fall & break, use a small screwdriver or knife to carefully remove only the INNER, small metal ring. Do NOT try to pop out the outer metal ring - that's the fixture itself - it will be damaged.
- Remove & replace the halogen bulb (do not touch any halogen bulbs with bare hands - use a glove or paper towel).
- Replace the glass & retainer ring.



# Futuro Futuro

## Care & Maintenance Manual

### Cleaning - Light Bulbs - Metal Filters - Carbon Filters

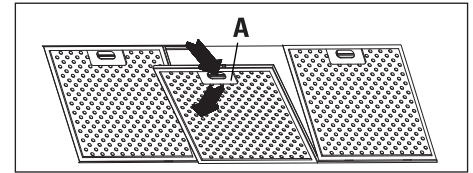
#### METAL GREASE FILTERS

The metal mesh filters capture airborne grease generated by the cooking process. Eventually, these filters become saturated and need to be cleaned.

To **remove** the metal grease filters: locate the locking lever / latch; while pressing or pulling the latch (depending on the model), support the filter with the other hand, to avoid dropping & potentially damaging it.

To **clean** the metal grease filters: wash in dishwasher as you would any other metal utensils. **DO NOT scrub** the filter with a brush, since this may damage or compress the mesh layers and reduce filter efficiency. If filters are **heavily saturated**: soak the filters in a pan or other container filled with warm water and several doses of de-greasing dish soap; once most of the grease has been dissolved, clean the filters in the dishwasher as usual.

Some range hood models have a cover panel (Perimeter Suction System deflector panel), that conceals the filters. The panel may be secured with mechanical latches (press and release the corners of the panel), or by magnets (simply pull the panel away from the hood body). The deflector panel itself may also be removed for cleaning - see diagram below. The panel may be cleaned with warm water & soap, or WD-40 spray, or any other NON-ABRASIVE stainless steel cleaning spray.

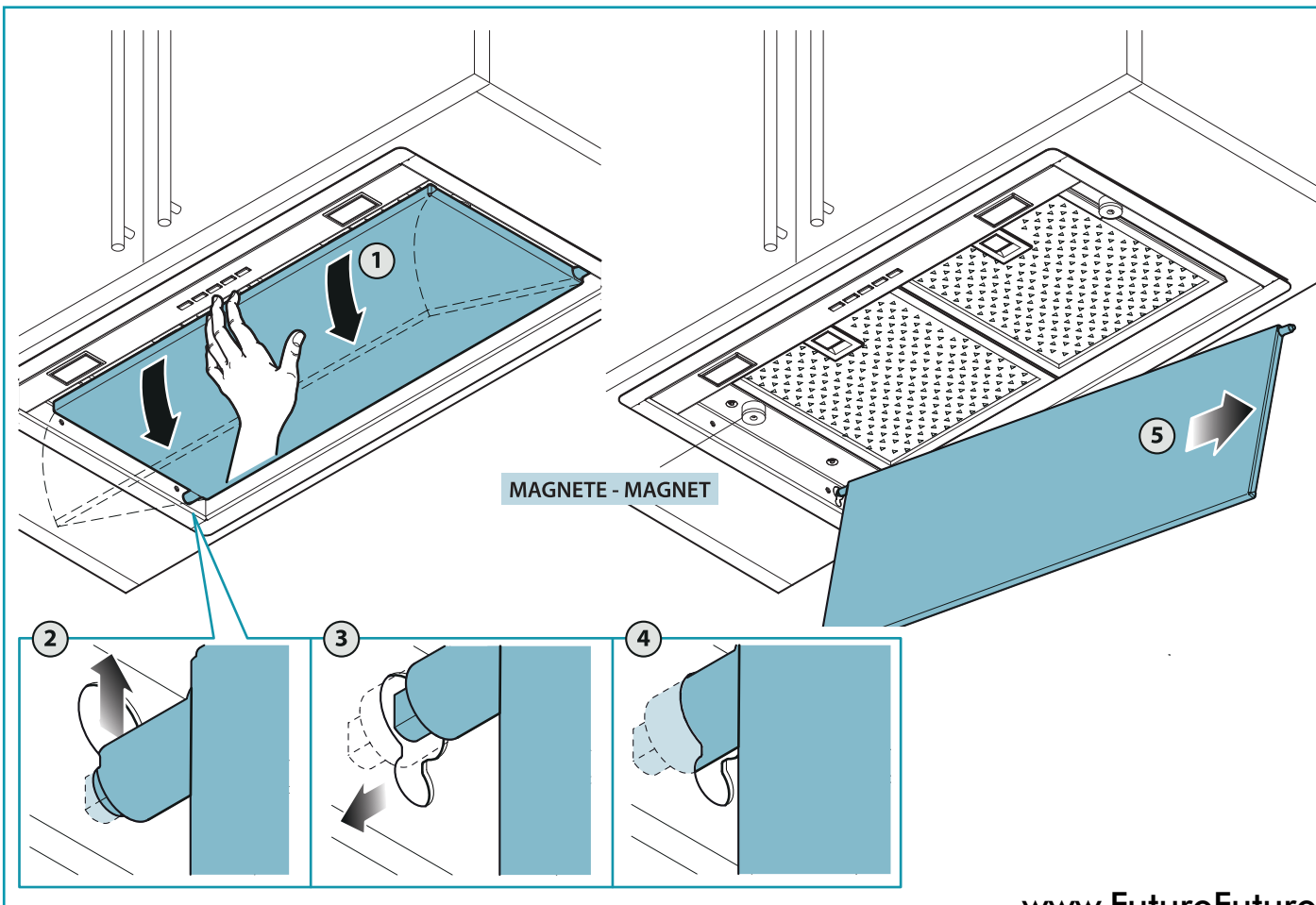


Metal filter with Pop-out latch & decorative overlay



Metal filter with Push-down latch & no overlay

#### FILTER COVER PANEL (SOME MODELS)



# Futuro Futuro

## Care & Maintenance Manual

### Cleaning - Light Bulbs - Metal Filters - Carbon Filters

#### CARBON FILTERS (CHARCOAL FILTERS - RECIRCULATING)

Range hoods that are installed in ductless (recirculating, ventless, etc) mode, should be equipped with charcoal filters, in addition to the standard metal mesh filters. After the metal filters capture the grease, the charcoal filters capture odor particles, before the air is recirculated back into the kitchen.

PLEASE NOTE: Charcoal filters SHOULD NOT be used when the hood is ducted to the outside.

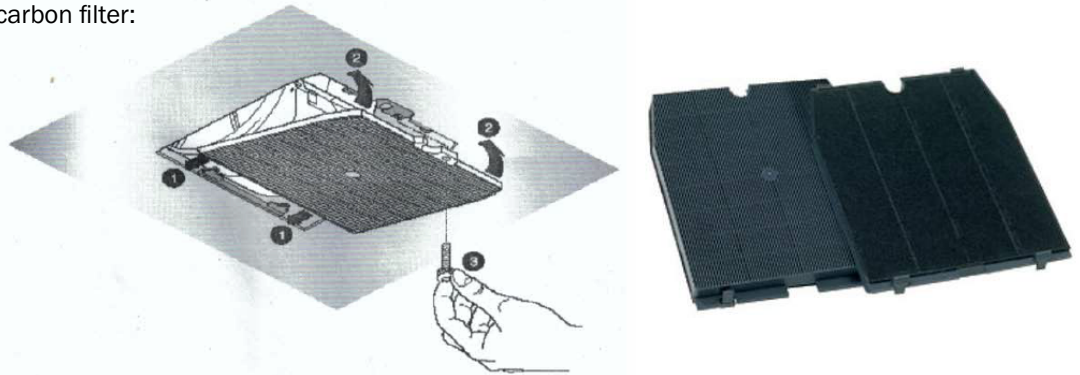
Charcoal filters are not washable - they must be replaced once they're completely saturated.

There are 3 types of charcoal filters: rectangular / "standard", round 6" (modern type), and round 8" (older type).

#### STANDARD CARBON FILTERS

To remove / replace a standard carbon filter:

- 1.) Remove the thumbscrew that holds the filter in place.
- 2.) Pull the filter off of the retaining tabs.
- 3.) Install new filter.
- 4.) Replace the thumbscrew.



#### ROUND CARBON FILTERS

Round carbon filters are latched on to the blower itself, and must be replaced in pairs.

To remove the old filter: rotate the filter ~ 30 degrees counter-clockwise, until it's loosened. Pull the filter off the blower. Repeat for the filter on the other side of the blower.

To install new filter: align filter with latches, press into position, rotate until you hear/feel the latch click into place.

