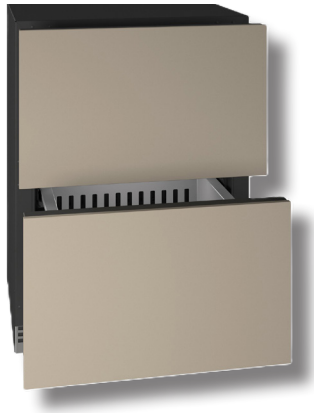


URDR324 - 24" REFRIGERATED DRAWERS

U-LINE

THE HOME COLLECTION



DESIGN

Black interiors with stainless steel accents.

Classic bar drawer pulls on stainless steel model.

Panel-ready integrated drawers, customizable with your panel and hardware, or choose from our accessory options.

FEATURES

Built for both **indoor & outdoor use**, with condensation mitigation system.

Carbon filter for enhanced air quality and odor reduction.

Door alarm activates when the drawer is left open.

Effortless entry drawers: Minimizes the physical effort needed, enhancing ease of use for all family members.

Electronic touch control enables precise temperature selection from **34°F to 70°F**.

Evenly distributed forced-air refrigeration system delivers rapid cool down and temperature stability.

Four leveling legs adjustable up to 1 inch.

Low-profile variable speed compressor ensures efficient and powerful cooling with a max output of 1,850 BTU/h.

Sabbath Mode disables interior lights, alarms, and digital displays while maintaining consistent cooling performance.

Six-color multi-point LED lighting in adjustable white: bright white, warm white, cool white, and light blue, deep blue, and teal.

STORAGE

5.1 cu. ft. capacity stores up to **108 12-oz cans**.

Two full-extension drawers.

CAPACITY

| | |
|--------------|-------------|
| Volume | 5.1 cu. ft. |
| Cans (12 oz) | 108 |

DIMENSIONS

| | |
|-----------------------|---------------------|
| Product Depth | 22 11/16" (57.6 cm) |
| Product Height (Min.) | 34 1/8" (86.7 cm) |
| Product Width | 23 1/2" (59.7 cm) |
| Product Weight | 120 lbs |
| Shipping Depth | 31" (78.7 cm) |
| Shipping Height | 37" (94 cm) |
| Shipping Width | 28" (71.1 cm) |
| Shipping Weight | 140 lbs |

CUSTOM PANEL DIMENSIONS

| | |
|---------------------|-------------------|
| Panel Height | 15" (38.1 cm) |
| Panel Thickness | 3/4" (1.9 cm) |
| Panel Width | 23 1/2" (59.5 cm) |
| Panel Weight (Max.) | 20 lbs |
| Panel Type | Solid panel |

SUSTAINABILITY

| | |
|--------------------------------|--------------|
| Refrigerant Type | R600a |
| GWP (Global Warming Potential) | 3 (very low) |
| ENERGY STAR | Yes |

TECHNICAL DETAILS

| | |
|-------------------------|--------------------|
| Cord Length | 6 ft. |
| Electrical Requirements | 115V / 60 Hz / 15A |

WARRANTY

2 year parts & labor warranty / 6 year sealed system parts warranty (see complete warranty for details).



