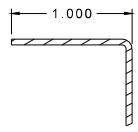
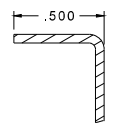
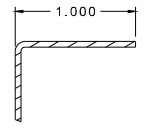
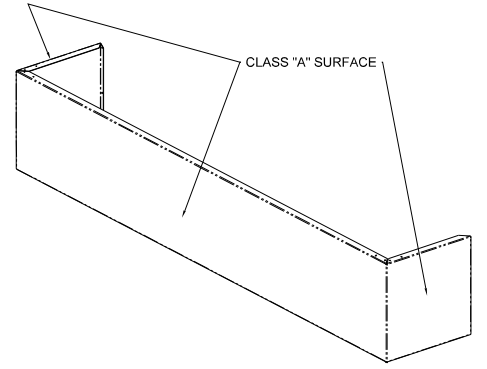
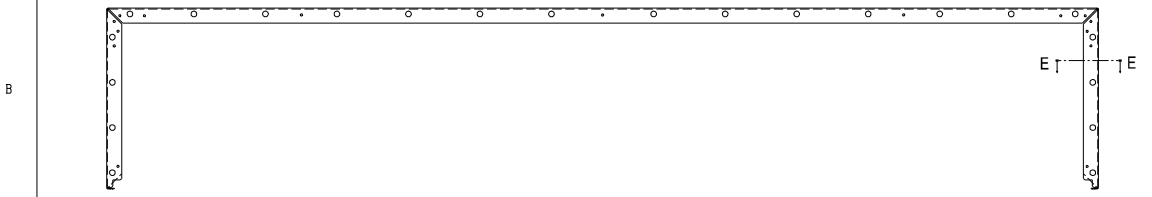
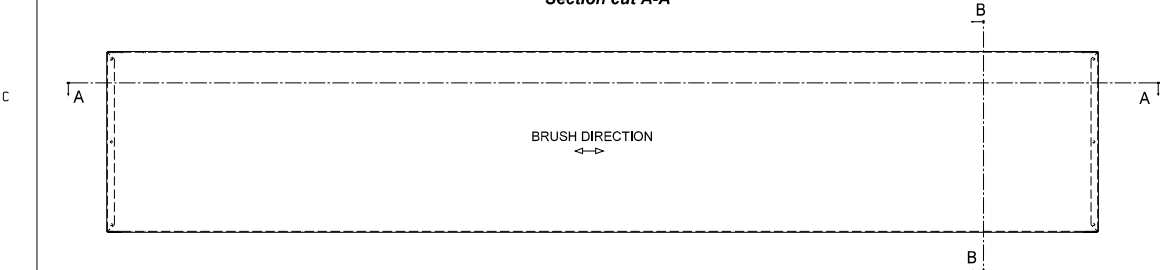
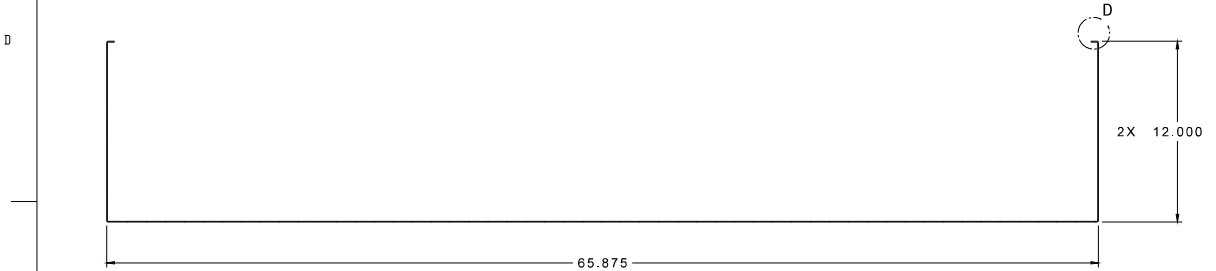
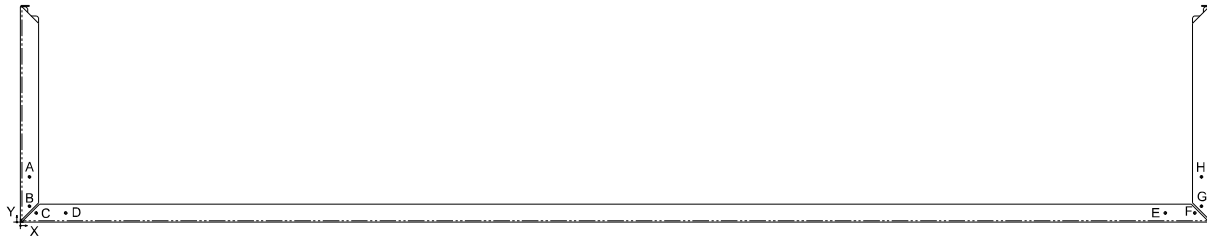


PART NUMBER	DESCRIPTION	MATERIAL	GRAIN
062915-000	COVER, WALL DUCT, SS, 66"	SEE NOTE 1	YES
062916-000	COVER, WALL DUCT, PAINTED, 66"	SEE NOTE 2	NO

- NOTES:
- UNLESS OTHERWISE SPECIFIED:
MATERIAL: 430 STAINLESS STEEL
FINISH: #4 BRUSH
THICKNESS: 18 GA (0.0478 in)
TOLERANCE ON ALL HOLE AND SLOT SIZES TO BE ± 0.005
ALL BENDS TO BE 90 DEGREES
TOLERANCES ON ALL BENDS TO BE ± 0.10
 - UNLESS OTHERWISE SPECIFIED:
MATERIAL: COLD ROLLED STEEL
FINISH: N/A
THICKNESS: 18 GA (0.0478 in)
TOLERANCE ON ALL HOLE & SLOT SIZES TO BE ± 0.005
ALL BENDS TO BE 90 DEGREES
TOLERANCES ON ALL BENDS TO BE ± 0.10
 - PARTS TO BE FREE OF BURRS AND SHARP EDGES WHEN TESTED PER VIKING STANDARD ST-0001.
 - PART MUST BE CLEAN AND FREE OF ALL OIL, DIRT, AND OTHER FOREIGN SUBSTANCES.
 - COMPONENTS MUST COMPLY WITH VIKING REQUIREMENTS AS SPECIFIED IN VIKING SPECIFICATION ST-0002.
 - CIRCLED DIMENSIONS DESIGNATE CRITICAL CHARACTERISTICS.
 - COMPONENTS MUST COMPLY WITH VIKING REQUIREMENTS AS SPECIFIED IN THE VIKING SUPPLIER QUALITY MANUAL (VSQM).



DESCRIPTION: INITIAL RELEASE			
BY: DKAN	ZONES:	ENGINEER: KCLE	NEW VEP: NEW EC: EC-220567 DATE: 3/3/17
THIS DOCUMENT IS CONFIDENTIAL PROPERTY OF VIKING RANGE, LLC. DETAILS CONTAINED HERE ON, IN WHOLE OR IN PART, ARE NOT TO BE DISCLOSED TO OTHERS. REPRODUCED OR USED FOR ANY PURPOSE WITHOUT THE WRITTEN CONSENT OF VIKING RANGE, LLC. THIS DOCUMENT OR ANY COPIES SHALL BE RETURNED UPON WRITTEN REQUEST. THIS DRAWING IS NOT TO SCALE UNLESS OTHERWISE SPECIFIED.			
TOLERANCES		 DRAWING DESCRIPTION: COVER, WALL DUCT, SS, 66"	
FRAC.	.XXX DEC.	ANGLES	
$\pm 1/64$	$\pm .015$	$\pm 1.0^\circ$	
(UNLESS OTHERWISE SPECIFIED)			
DRAWN BY: DKAN	ORIG VEP:	ORIG EC: EC-220567	DATE: 3/3/17
ENGINEER: KCLE	DRAWING: 062915-000	REV: 1	SHEET: 1 of 4

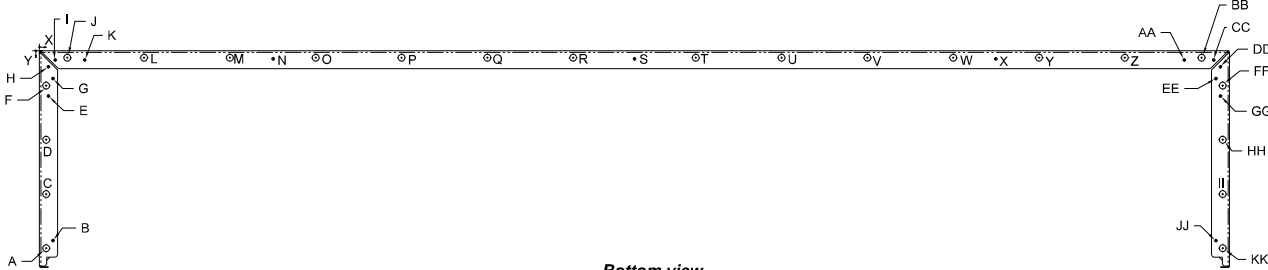


Top view

TOP VIEW HOLE TABLE			
REF.	X	Y	Diameter
A	0.500	2.507	0.140
B	0.500	0.882	0.140
C	0.874	0.508	0.140
D	2.504	0.508	0.140
E	63.371	0.508	0.140
F	65.001	0.508	0.140
G	65.375	0.882	0.140
H	65.375	2.507	0.140



Front view



Bottom view

BOTTOM VIEW HOLE TABLE			
REF.	X	Y	Diameter
A	0.375	10.927	0.375
B	0.710	10.510	0.140
C	0.375	7.932	0.375
D	0.375	4.927	0.375
E	0.500	2.507	0.140
F	0.375	1.927	0.375
G	0.710	1.536	0.140
H	0.500	0.882	0.140
I	0.874	0.508	0.140
J	1.542	0.383	0.375
K	2.504	0.508	0.140
L	5.792	0.383	0.375
M	10.542	0.383	0.375
N	12.938	0.450	0.140
O	15.292	0.383	0.375
P	20.042	0.383	0.375
Q	24.792	0.383	0.375
R	29.542	0.383	0.375
S	32.938	0.450	0.140
T	36.332	0.383	0.375
U	41.082	0.383	0.375
V	45.832	0.383	0.375
W	50.582	0.383	0.375
X	52.938	0.450	0.140
Y	55.332	0.383	0.375
Z	60.082	0.383	0.375
AA	63.371	0.508	0.140
BB	64.332	0.383	0.375
CC	65.001	0.508	0.140
DD	65.375	0.882	0.140
EE	65.165	1.536	0.140
FF	65.500	1.927	0.375
GG	65.375	2.507	0.140
HH	65.500	4.927	0.375
II	65.500	7.932	0.375
JJ	65.165	10.510	0.140
KK	65.500	10.927	0.375



Rear view

REAR VIEW HOLE TABLE			
REF.	X	Y	Diameter
A	0.312	0.500	0.140
B	0.312	6.000	0.140
C	0.312	11.500	0.140
D	65.563	0.500	0.140
E	65.563	6.000	0.140
F	65.563	11.500	0.140

DESCRIPTION:
INITIAL RELEASE

BY: DKAN ZONES: ENGINEER: KCLE NEW VEP: NEW EC: EC-220567 DATE: 3/3/17

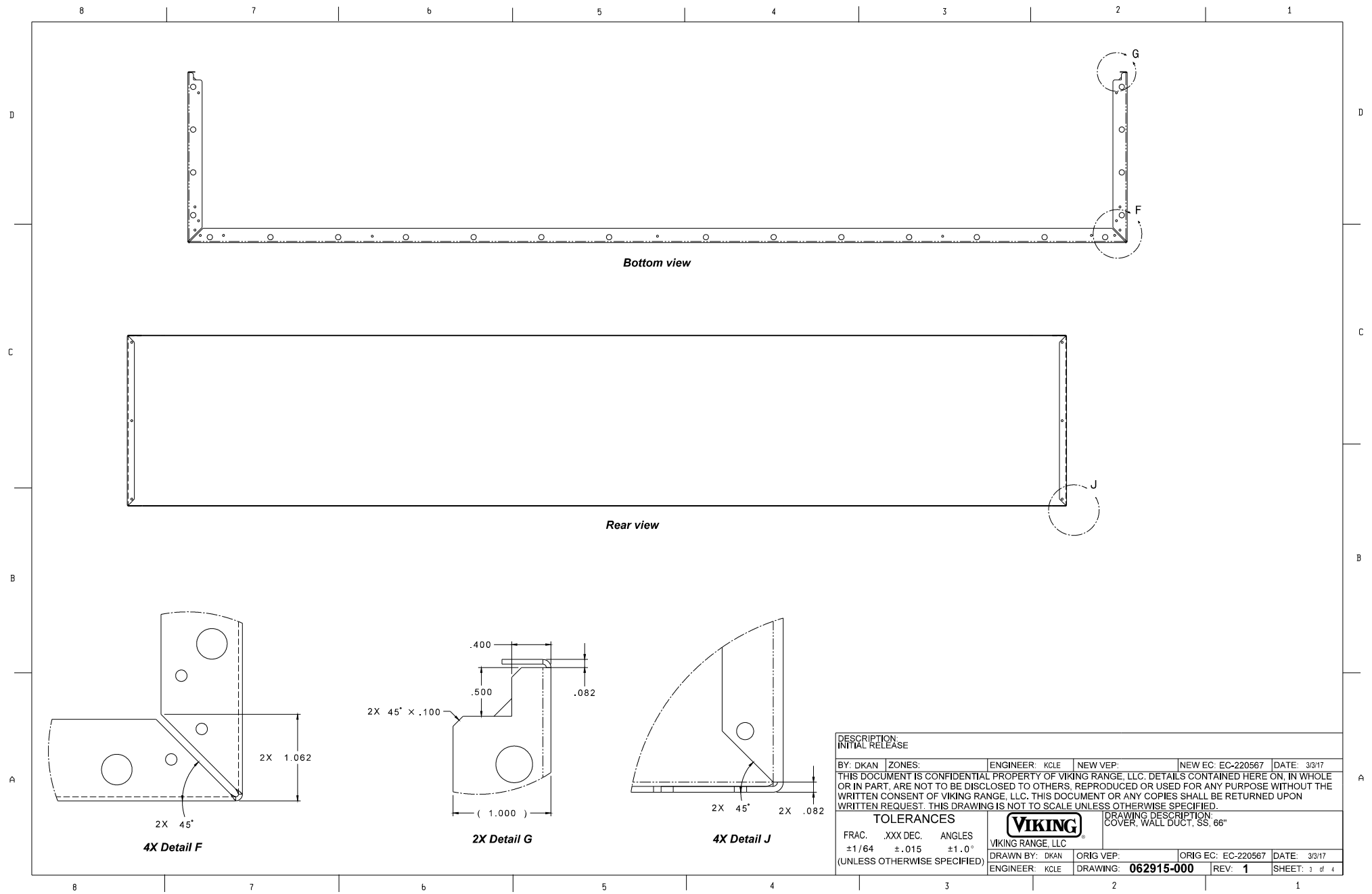
THIS DOCUMENT IS CONFIDENTIAL PROPERTY OF VIKING RANGE, LLC. DETAILS CONTAINED HERE ON, IN WHOLE OR IN PART, ARE NOT TO BE DISCLOSED TO OTHERS. REPRODUCED OR USED FOR ANY PURPOSE WITHOUT THE WRITTEN CONSENT OF VIKING RANGE, LLC. THIS DOCUMENT OR ANY COPIES SHALL BE RETURNED UPON WRITTEN REQUEST. THIS DRAWING IS NOT TO SCALE UNLESS OTHERWISE SPECIFIED.

TOLERANCES
FRAC. .XXX DEC. ANGLES
±1/64 ±.015 ±1.0°
(UNLESS OTHERWISE SPECIFIED)

VIKING
VIKING RANGE, LLC

DRAWING DESCRIPTION:
COVER, WALL DUCT, SS, 66"

DRAWN BY: DKAN ORIG VEP: ORIG EC: EC-220567 DATE: 3/3/17
ENGINEER: KCLE DRAWING: 062915-000 REV: 1 SHEET: 2 of 4



DESCRIPTION: INITIAL RELEASE					
BY: DKAN	ZONES:	ENGINEER: KCLE	NEW VEP:	NEW EC: EC-220567	DATE: 3/3/17
THIS DOCUMENT IS CONFIDENTIAL PROPERTY OF VIKING RANGE, LLC. DETAILS CONTAINED HERE ON, IN WHOLE OR IN PART, ARE NOT TO BE DISCLOSED TO OTHERS. REPRODUCED OR USED FOR ANY PURPOSE WITHOUT THE WRITTEN CONSENT OF VIKING RANGE, LLC. THIS DOCUMENT OR ANY COPIES SHALL BE RETURNED UPON WRITTEN REQUEST. THIS DRAWING IS NOT TO SCALE UNLESS OTHERWISE SPECIFIED.					
TOLERANCES			 DRAWING DESCRIPTION: COVER, WALL DUCT, SS, 66"		
FRAC.	.XXX DEC.	ANGLES			
±1/64	±.015	±1.0°			
(UNLESS OTHERWISE SPECIFIED)					
DRAWN BY: DKAN		ORIG VEP:		ORIG EC: EC-220567	
ENGINEER: KCLE		DRAWING: 062915-000		DATE: 3/3/17	
				REV: 1	
				SHEET: 3 of 4	

