



SHARP | Simply Better Living

PAIRING GUIDE

Microwave Drawer™ Oven
MODELS SMD2479JS, SMD2479MB,
SMD2479MW, SMD2489ES, SMD2499FS

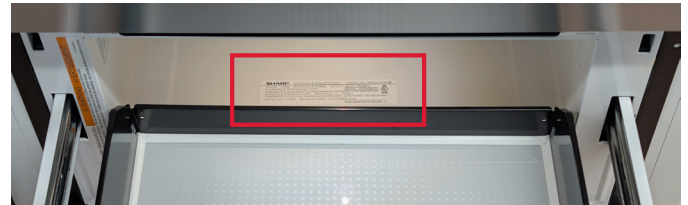


IDENTIFY THE RIGHT APP AND PAIRING INSTRUCTIONS

Your Microwave Drawer™ Oven includes app connectivity. To ensure you download the correct app and follow the proper pairing process, please confirm your full model number before getting started.

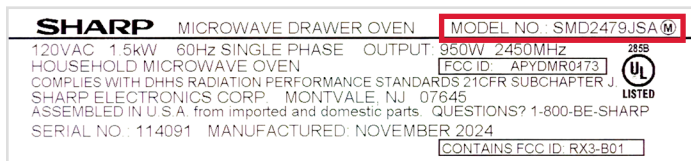
1. LOCATE YOUR MODEL NUMBER

- The full model number is found inside the drawer, on the bottom inner panel when the drawer is open.



2. IDENTIFY YOUR MODEL NUMBER AND SUFFIX

- Use the last letter (suffix) to determine which pairing instructions apply to your model:



Model: SMD2489ES		
SUFFIX LETTER	MOBILE APP	DOCUMENT PAGE
SMD2489ESF	SHARP HOME App	Page 3
SMD2489ESA/B/D/ or E	Sharp Kitchen App	Page 5

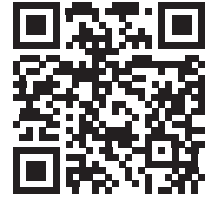
Model: SMD2479JS		
SUFFIX LETTER	MOBILE APP	DOCUMENT PAGE
SMD2479JSD	SHARP HOME App	Page 3
SMD2479JSA or B	Sharp Kitchen App	Page 5

Models: SMD2479MB & SMD2479MW		
SUFFIX LETTER	MOBILE APP	DOCUMENT PAGE
SMD2479MBA	SHARP HOME App	Page 3
SMD2479MWA	SHARP HOME App	Page 3

Model: SMD2499FS		
SUFFIX LETTER	MOBILE APP	DOCUMENT PAGE
SMD2499FSB	SHARP HOME App	Page 3
SMD2499FSA	Sharp Kitchen App	Page 5

HOW TO CONNECT AND PAIR YOUR APPLIANCE TO THE SHARP HOME™ APP

Scan this QR code or visit <https://support.sharpusa.com/s/> and search for SMD2479JS, SMD2479MB, SMD2479MW, SMD2489ES, or SMD2499FS on how to connect and pair your appliance to the SHARP HOME™ App.



1. GETTING STARTED

- Download the **SHARP HOME™** App on the App Store® or Google Play.



- Launch the SHARP HOME™ App. If you already have an account, **sign in**. Otherwise, create an account.

Note: If you do not have a Sharp account, select Sign up and follow the on-screen instructions. A verification email will be sent.

2. BEFORE YOU BEGIN

- Plug in and power on Microwave Drawer™ Oven.
- Ensure your mobile device is connected to a 2.4 GHz or 5 GHz Wi-Fi network and **disable Auto-Reconnect / Auto-Join** for any other home networks previously setup on your device.
- Ensure that your chosen Wi-Fi network has a good signal strength in the area where you install your Microwave Drawer™ Oven.
- Please have your home network Wi-Fi name (SSID) and password readily available.
- Launch the **SHARP HOME™** App and **sign in**. Follow instructions below to connect and pair.

3. PAIRING YOUR APPLIANCE

Note: Please turn on Remote Start before pairing your oven. Press **TIMER/SETTINGS** 3 times, then press **START/+30 SEC**.

- On the SHARP HOME™ App, touch the **+** icon.
- Select the appliance you want to pair, and touch **Next**.
- Follow instructions on the app.
- When finished, the screen will display “Completed!”. Touch **DONE**.

- The oven will display

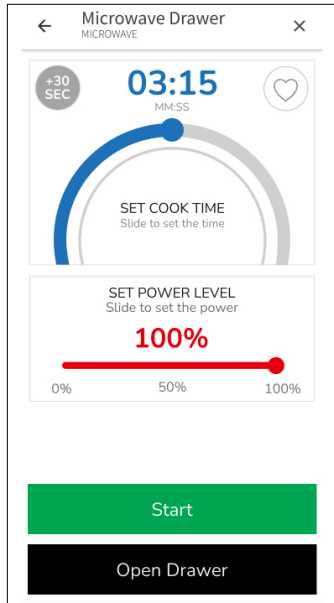
PAIRED	WITH	CLOUD	FOLLOW	APP	TO
--------	------	-------	--------	-----	----

COMPLETE

. Touch **STOP/CLEAR** on the control panel.

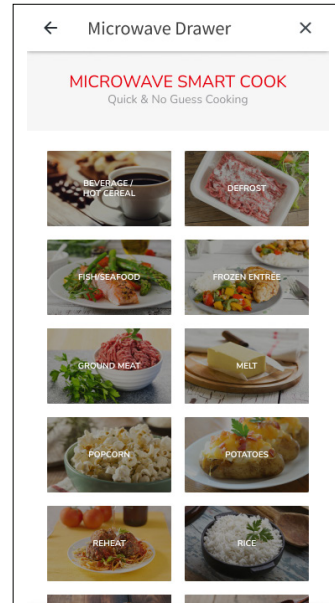
CONTROL YOUR MICROWAVE DRAWER™ OVEN FROM YOUR MOBILE DEVICE!

Manual Cook



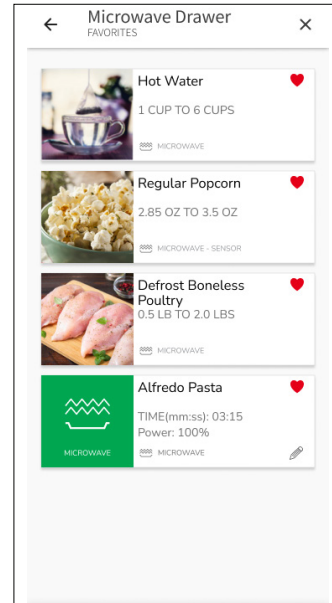
Send cooking instructions to your microwave oven from your mobile device.

Smart Cook



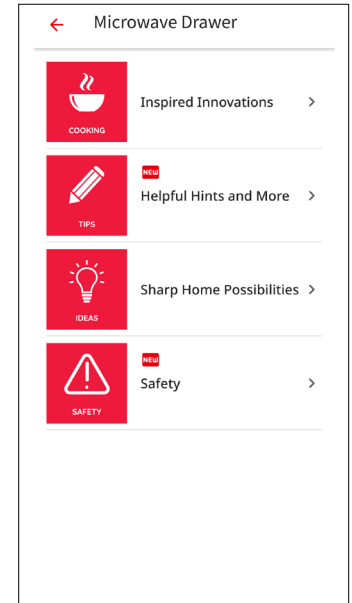
Eliminate the guesswork with easier access to Sensor/Non-Sensor Cook and Defrost menu items.

Save Your Favorites



Easily access your go-to menu items.

Sharp Spotlight




Keep up-to-date for fun recipes, ideas and tips with live access to Sharp's Simply Better Living Community.

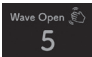
HOW TO ACTIVATE EASY WAVE OPEN FUNCTION

Note: Easy Wave Open is **OFF by default** when plugged in.

EASY WAVE OPEN ON

- Hold  on the control panel for 3 seconds. Once enabled, the white light on the center of the panel will illuminate and the display will show **EASY WAVE OPEN ON**.
- To use the Easy Wave Open function, simply wave your hand twice in front of the sensor in consecutive motions. This can be up and down or side to side motions.

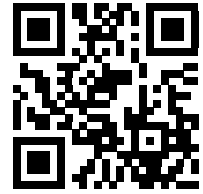
EASY WAVE OPEN OFF

- Hold  on the control panel for 3 seconds. Once disabled, the white light on the center of the panel will turn off and the display will show **EASY WAVE OPEN OFF**.
- When Control Lock is activated, the Easy Wave Open Function is off.



HOW TO CONNECT AND PAIR YOUR APPLIANCE TO THE SHARP KITCHEN APP

Scan this QR code or visit <http://www.sharppusa.com/Support.aspx> and search for SMD2479JS, SMD2479MB, SMD2479MW, SMD2489ES, or SMD2499FS on how to connect and pair your appliance to the Sharp Kitchen App.



1. GETTING STARTED

- Download the **Sharp Kitchen** App on the App Store® or Google Play.



- Launch the Sharp Kitchen App and sign in or create a Sharp account.
*If you already have a Sharp account, enter credentials and select **(SIGN IN)**.

If you do not have a Sharp account, select **(CREATE ACCOUNT)** and follow the on-screen instructions. A verification email will be sent. Please verify email within 24 hours, otherwise account registration will need to be restarted.

2. BEFORE YOU BEGIN

- Plug in and power on Microwave Drawer™
- Ensure your mobile device is connected to a 2.4 GHz or 5 GHz Wi-Fi network and **disable Auto-Reconnect / Auto-Join** for any other home networks previously setup on your device.
- Ensure that your chosen Wi-Fi network has a good signal strength in the area where you install your Microwave Drawer™.
- Please have your home network Wi-Fi name (SSID) and password readily available.

3. PAIRING YOUR APPLIANCE

- Launch the **Sharp Kitchen** app and sign in. Follow instructions below to connect your Microwave Drawer™ to the Internet, then pair your app to your appliance.

ON YOUR OVEN

- Press and hold the "0" (zero) pad for 3 seconds until you hear a beep. The oven will display **TOUCH ENABL- ING WIFI ENABL- ING WIFI WIFI ON NOW IN AP MODE**



IN THE APP

- Then press **(NEXT)**.



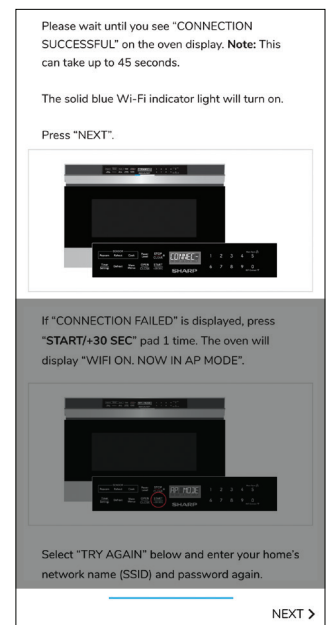
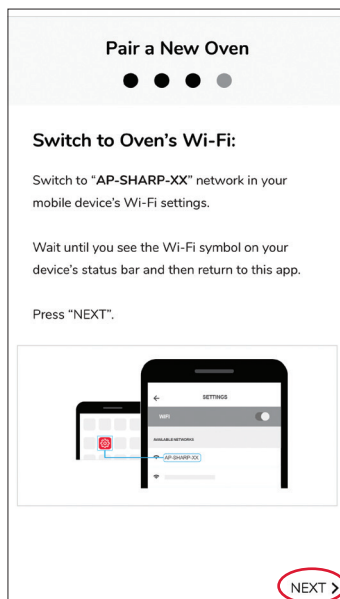
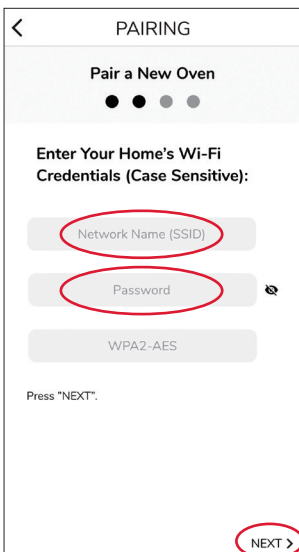
IN THE APP

Please enter your:

- Home Network Name (SSID)
- Home Network Password (SSID Password)
- Then press **(NEXT)**.
- Go to the Wi-Fi Settings on your mobile device.
- Click **AP-SHARP-XX** on your mobile device's Wi-Fi Setting.
- Then press **(NEXT)**.

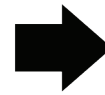
Please wait until the Wi-Fi symbol displays on the mobile device's status bar before returning to the app.

Wait until you see **CONNECT- TION SUCCESS -FULL** on the oven display. The solid blue Wi-Fi light will turn on.



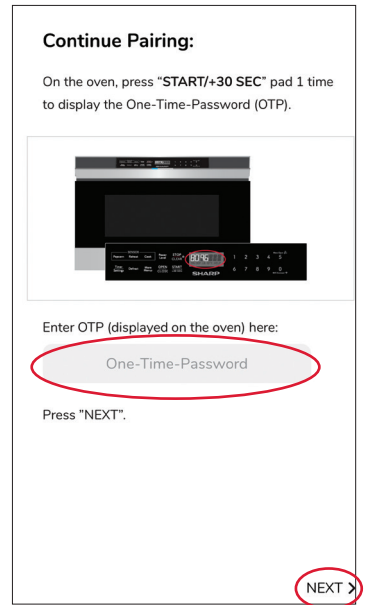
ON YOUR OVEN

- After your oven is successfully paired press **(START)** button to display a **One-Time-Password (OTP)**.



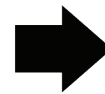
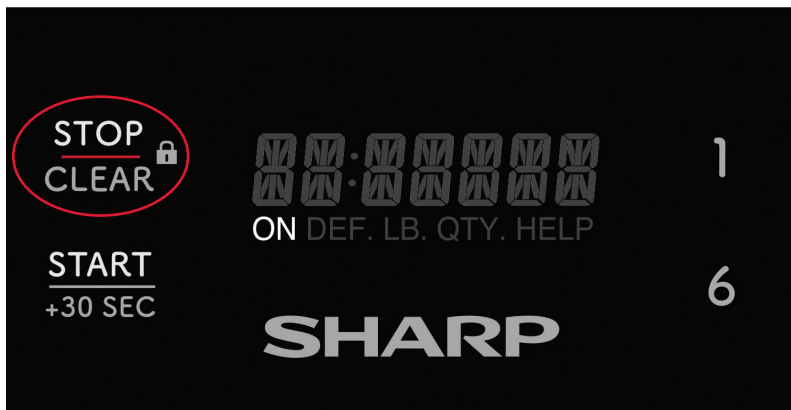
IN THE APP

- Enter the One-Time-Password displayed on the oven and press **(NEXT)**.



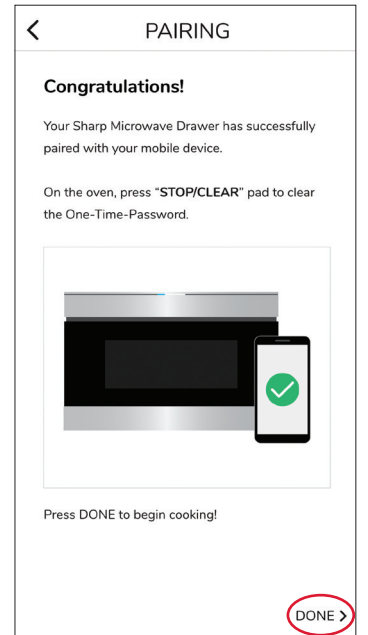
ON YOUR OVEN

- On the oven press **(STOP/CLEAR)** button to clear the One-Time-Password.



IN THE APP

- Then press **(DONE)** to complete pairing.



TROUBLESHOOTING

My app is not compatible with my device.	Please make sure your mobile device is updated to the latest software available.
I tried pairing my oven and it displayed "WI-FI OFF. TOUCH CLEAR."	Go back to initial pairing screen and select "Pair a New Oven" not "Add an Additional Device."
I cannot connect my device to the oven.	Double check that you entered your home network's SSID and password correctly. Remember both are case sensitive. Ensure your mobile device is connected to the same 2.4 GHz or 5 GHz Wi-Fi network as the oven when pairing.
My app is displaying a "Network Error!" Message.	Please make sure your wireless network is working and your Internet connection is active.
My oven's Wi-Fi Network is not found by my device.	Make sure your oven is in AP Mode. Press and hold 0 (zero) for 3 seconds until you hear a beep.
Connection Failed displayed on oven display panel.	Ensure Wi-Fi signal strength is strong and router is located near the oven.
I have successfully paired but cannot open my Microwave Drawer™ Oven.	Enable Remote Start by pressing TIMER/SETTINGS 3 times, then press START/+30 SEC.

STILL NEED ASSISTANCE?



EMAIL

Available 24/7

US: sharpusa.com



CHAT ONLINE



CALL US

US

800-BE-SHARP
800-237-4277

See the Contact Us section on our sites

U.S. | <https://support.sharpusa.com/s/>

Contact a Sharp Advisor on the phone

© 2025 Sharp Electronics Corporation. All rights reserved.

Sharp and all related trademarks are trademarks or registered trademarks of Sharp Corporation and/or its affiliated companies. All other trademarks are property of their respective owners.

Apple and iPhone are trademarks of Apple Inc., registered in the U.S. and other countries.

Android and Google Play are trademarks of Google LLC.

SHARP ELECTRONICS CORPORATION
100 Paragon Drive, Montvale NJ, 07645
1.800.237.4277 • www.sharpusa.com

05/11/ 2026