



Smart Shabbat Kosher Minibar rx300



QUEEN 7 WATER TECH INC | 202 Jericho Tpke, Floral Park, NY 11001 | 718-850-4717

The Smart Shabbat Kosher Minibar

- The 'Smart Shabbat Appliance' - kosher minibar, allows your family to enjoy clean, healthy, tasty, hot and cold water, in comfort, while observing shabbat halacha.
- The compact, smart minibar, includes cutting-edge Water Tech features and an ultra-innovative design:
- EXTRA HOT digital thermostat button - for a full water boil
- Three pouring modes for maximum comfort - hot, cold and lukewarm, including separate faucets
- Elegant design and advanced digital display - fitting smartly into the look of your kitchen
- Safety features - built-in safe-stop boiling water faucet for child protection plus external heating element which prevents direct electric contact
- Pure, healthy drinking water at all times - the device connects directly to the water filtration system, while the stainless-steel water tanks provide drinking water without corrosion or quality degradation
- Energy saving mode with double-thickness insulation that prevents energy loss
- Double-thickness hot water tank - 1 mm thick stainless steel. Designed for durable for everyday use
- Approved for marketing by the Israeli and International Standards Institute - ISO Standards 9000 electrical appliance product quality and integrity
- The minibar design has unique technology that prevents the need for "Tevilat Kelim".

Minibar Installation Instructions

1. The minibar water device should be located in a flat, dry, and protected area, away from direct sunlight and placed at least 20 cm from the back wall. The installation is intended for use inside a closed structure.
2. It is recommended to install the Minibar away from the reach of children
3. It is recommended to install the system at a distance from other electrical products to prevent possible overheating or heat absorption from a nearby device
4. The Minibar must be installed with a pressure reducer before connecting to the water supply. The system does not withstand water pressure above 3 atmospheres-3.0 M bar
5. Choose a convenient faucet for connecting the water supply to the system, add a supply /disconnect faucet (for service / repair). It is mandatory to connect a filtration system that includes scale reduction. Once system is installed, the water supply pipe can then be connected to the water inlet.
6. Slowly open the water supply tap, making sure there is no leakage from the connections and / or appliance
7. Wait 2-3 minutes and make sure that the water flow from the taps is free of air bubbles and the flow is constant. Then continue to rinse the system before use
8. After the water comes out of the taps cold / lukewarm, the device can then be connected to the electrical system
9. Turn on the cold-water circuit breaker and then turn on the hot water touch-button to initiate the hot and cold-water system
10. If a water purification unit is installed, on order to connect please follow the attached instructions
11. A minibar unit connected to the water supply network by means of detachable flexible pipe systems should use the new flexible pipe systems supplied with the appliance and not reuse previous piping systems
12. Please note that it is vital to wash the filters before connecting to the system

Important Installation Notes

1. This system must be installed by a qualified technician on behalf of the company
2. It is mandatory to connect the device to a power source connected to the ground with an electrical circuit breaker (leakage circuit breaker) installed in it
3. If the feed fuse is damaged, it should only be replaced by a manufacturer service agent, or another qualified person
4. Do not unplug the power cord to turn off and / or turn on the system, use only the switches
5. Do not clean the device with running water (to prevent electric shock). It is recommended to wipe the device with a damp cloth and then dry it well
6. This device is intended for use as per the safety instructions and for use under responsible adult supervision
7. Do not move or tilt the appliance when it is connected to the mains
8. Do not tilt the device more than 45 degrees during transfer
9. The company is not responsible for the installation if the device has not been installed by a qualified technician on behalf of the company



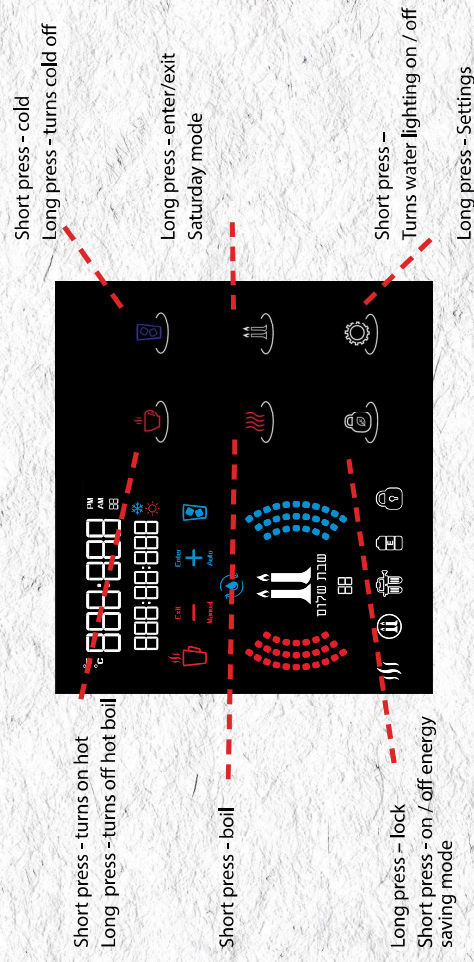
System features

1. This system is a system for supplying hot and cold drinking water. In order to install, the company has a water point and an electricity point.
2. This system is easy to maintain and service.
3. This system is equipped with an efficient and powerful compressor.
4. The water tanks are made of stainless steel, which ensures the highest quality.

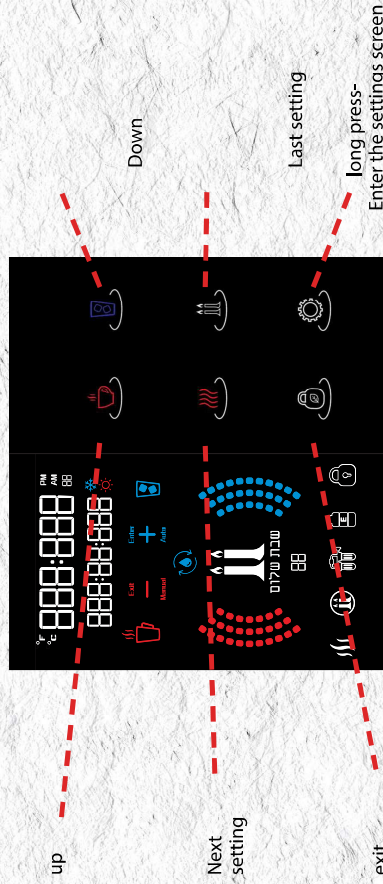
Technical data for models	Water device Kosher for use on Shabbat hot/coldsmart shabbat RX 300
Cold water temperature	41 Fahrenheit
Hot water temperature	194 Fahrenheit
Working voltage	110-115 60HZ
compressor	GAS R 134A / 34 GR
Power consumption Heating system	watt (1080) 80 + 1000
Power consumption cooling system	watt 70
General power consumption	watt 1150
Climate level class T	1+-43 degrees
Moisture standard	IP*1 This device is intended for use indoors
Water pressure	3 bar
Water pressure	Mpa 0.3
Cold water tank volume	2 liters
Hot water tank capacity / capacity	6.5 liters gross, 5 liters net on Shabbat mode

A system for heating and cooling drinking water removes taste and odor removes 75% chlorine

Operating functions



Settings



Setting Page Numbers

1	Month, day, year	Default
2	hour, minutes	According to the burning computer date in Israel time
3	Cold water degrees (default: 41 F)	41 F
4	Hot water degrees (default: 194 F)	194 F
5	Boiling water degrees (default: 203 F)	203 F
6	Automatic summer time mode	automaton
7	Summer time, manual (available only if automatic mode is deactivated)	
8	Start of saving mode	12:00
9	End of saving mode	12:00
10	Determining a period of time for filter replacement	6
11	Clock configuration from 12 to 24	12
12	Determining the temperature measurement unit F/C	Fahrenheit
13	Automatic Saturday mode setting	active
14	Determining compressor protection time	01:00

Shabbat Minibar – How to Create YOUR Shabbat Schedule

Introducing 'Smart Shabbat', an innovative Shabbos minibar

The appliance employs hi-tech, leading-edge design, providing hot and cold water during the week, while on Shabbat, it can perfectly replace the Shabbat urn without any halachic concerns.

The 'Smart Shabbat Appliance' is a mini-bar with a registered patent, developed with close rabbinical advisory cooperation, enabling use of Shabbos mode without a 'Grama', with the approval of the Technological Institute of Halacha, headed by Rabbi Halperin and is kosher by Badatz Mehadrin, Rabbi Rubini.

Shabbat Mini Bar delivers all the benefits of an urn at the touch of a digital button.

In Shabbos mode, the 'Shabbat' mini bar works continuously all Shabbat and is not influenced by your actions. Therefore, its use on Shabbos is permitted "L'Mehadrin min Hamehadrin"!

*To initiate the Shabbat Minibar Shabbos mode simply long-press on the 'Shabbat' button.

When you switch to Shabbos mode, the word Shabbat will turn on display with two candles, the device will complete filling hot water, and then will automatically activate a short boil for a few minutes then switching into operational Shabbos mode.

In this mode all the buttons are inactive and the device will continue to operate automatically independent of your use:

The water is locked in the hot water tank of the minibar, while a small heating element will be continuously activated statically maintaining the temperature of the hot water throughout the Shabbat, without use of a thermostat.

At the same time, the cooling system will also work fully automatically. Adjusting slowly, without a thermostat.

So, whether you used water or not, the activity is in no way affected by your actions and there is no fear of chillul Shabbos by grama!

You can produce about 5 liters of hot water and use unlimited cold or lukewarm water.

*To Stop Shabbat mode - Press and hold the 'Shabbat' button again and return the minibar to normal operation.