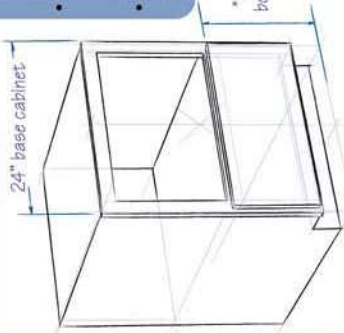


# Installation TIPS: 24" Sharp Microwave Drawer® in 24" wide stock cabinet

For face frame style cabinets

\* Please refer to the installation manual for more information regarding product safety and proper installation procedures and requirements.

## PLANNING

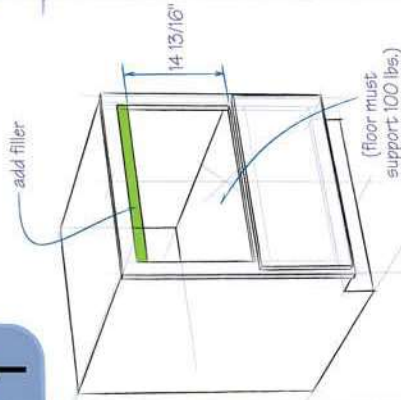


- Example Shown:**
- Base Microwave Cabinet 34 1/2" H with Deep Bottom Drawer.
  - Design and availability vary by cabinet manufacturer.
  - Installation requires a pre-finished filler.

\*From floor to top of bottom drawer/doors: 18 5/16" max

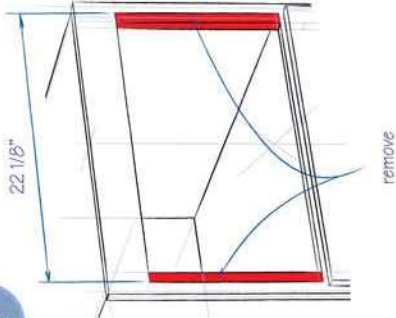
\*Dimension allows for 1/4" gap between the Microwave Drawer and the countertop and 1/2" gap between the bottom of the Microwave Drawer and the top of the lower drawer/door.

1



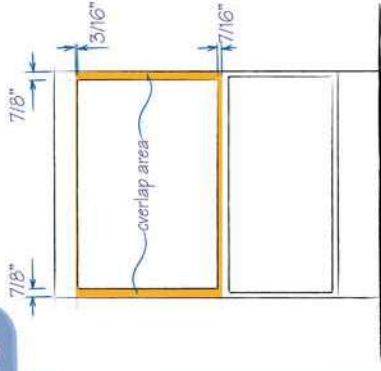
Add horizontal filler to the top of the opening. Height of opening should be 14 13/16".

2



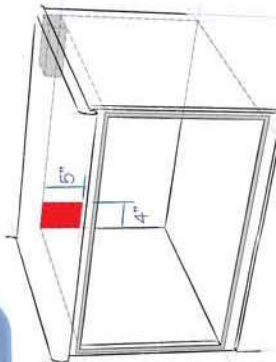
Enlarge opening width to clear the Microwave Drawer body.

3



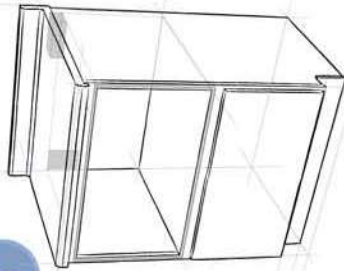
Allow space around opening for product overlap.

4



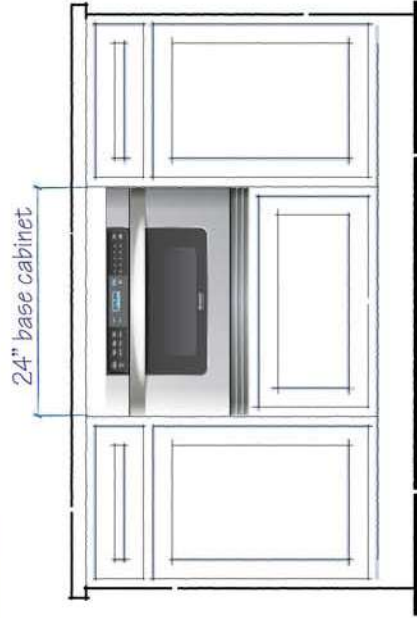
Place electrical outlet in upper back left side in the cavity opening. Can also be installed using an electrical outlet in an adjacent cabinet. Always check electrical codes for requirements.

5



Proceed to the installation manual for instructions on installing the Microwave Drawer into the cabinet.

## Completed installation



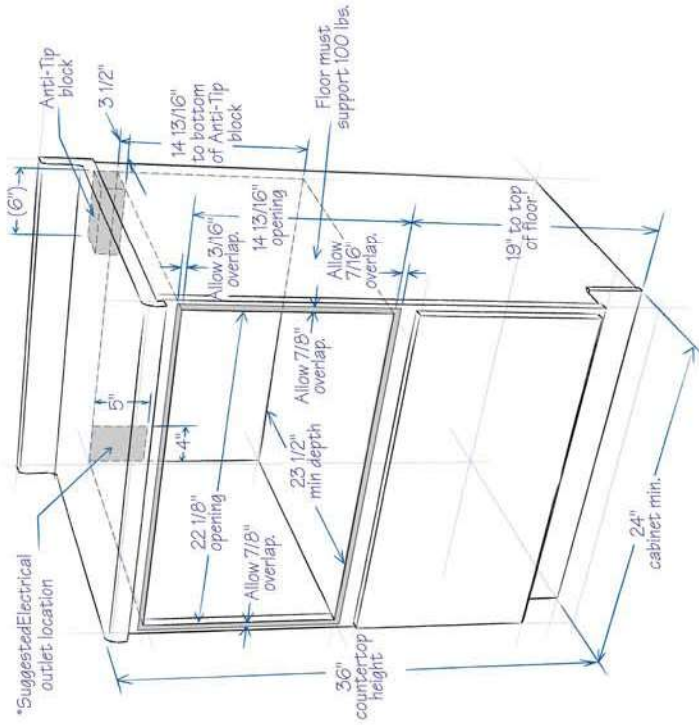
**SHARP®**

# Installation TIPS: 24" Sharp Microwave Drawer® in 24" wide stock cabinet

For face frame style cabinets

\* Please refer to the installation manual for more information regarding product safety and proper installation procedures and requirements.

## Cabinet cutout specification



\* Can also be installed using an electrical outlet in an adjacent cabinet within the area where the provided electrical cord can reach. Power cord access hole in cabinet should be a minimum 1 1/2" diameter hole and deburred of all sharp edges.

**IMPORTANT** Always allow sufficient power cord length to the electrical outlet to prevent tension. Always check electrical codes for requirements.

**Design and specifications are subject to change without notice.**  
Sharp and Microwave Drawer are registered trademarks of Sharp Corporation. All other trademarks are the property of their respective owners.

**SHARP®**

SHARP ELECTRONICS CORPORATION  
Sharp Plaza, Mahwah, NJ 07430-2135  
1-800-BE-SHARP • [www.sharpusa.com/microwavedrawer](http://www.sharpusa.com/microwavedrawer)

© 2007 Sharp Electronics Corporation

Printed in the U.S.

01-30-07-MA-09-112

## Microwave Drawer dimensions

