



SAPPHIRE

Adapting to Your Environment

Ice Maker ♦ Wine Cellar ♦ Refrigerator ♦ Beverage Center ♦ Drawer Refrigerator

Sapphire Series 3 24" Solid Door Refrigerator 24" Beverage Center 24" Wine Cellar 15"&24" Drawer Refrigerator Operator's Manual

SR243SS/SSPR(ADA) Indoor & Outdoor Model
SBC243SS/SSPR(ADA) Indoor & Outdoor Model
SW243SZSS/SSPR(ADA) Indoor & Outdoor Model
SRD153SS/SSPR Indoor & Outdoor Model
SRD243SS/SSPR Indoor & Outdoor Model

SapphireAppliances.com | 1.866.754.6672

⚠ WARNING

California Proposition 65

Certain components in this product and its related accessories contain chemicals known to the state of California to cause cancer, birth defects or other reproductive harm.

PRODUCT REGISTRATION INFORMATION

Please record your model's information. You will need to know this information whenever you call to request information or service. The model's information appears on a serial number plate.

Model Number: _____

Serial Number: _____

You can register your appliance at:

SapphireAppliance.com

Or

Fill out the provided Warranty Registration Card and mail in.

Your Serial Tag is located on the top, inside of your Sapphire appliance. We recommend using your cellphone to take a picture of the Serial Tag so you can record the Model and Serial numbers here and for any future reference.



Indoor/Outdoor BC WC REFR



Indoor/Outdoor Drawer REFR

Congratulations on your new SAPPHIRE Series 3 Refrigerator. To ensure proper operation, please read this Operator's Manual carefully before using this product. Keep this manual in a safe place for future reference.

TABLE OF CONTENTS

SAFETY	3
SAFETY DEFINITIONS	3
SAFETY PRECAUTIONS	3
SPECIFICATIONS	6
SAPPHIRE SERIES 3 24-INCH INDOOR/ OUTDOOR REFRIGERATOR	6
SAPPHIRE SERIES 3 24-INCH INDOOR/ OUTDOOR BEVERAGE CENTER/ REFRIGERATOR	7
SAPPHIRE SERIES 3 24-INCH INDOOR/ OUTDOOR WINE CELLAR	8
SAPPHIRE SERIES 3 15/24-INCH INDOOR/ OUTDOOR DRAWER REFRIGERATOR	9
INSTALLING THE UNIT	10
REQUIRED CABINET OPENING	12
BUILT-IN CABINET DIMENSIONS	12
SAPPHIRE INDOOR CABINET DIMENSIONS	12
LEVELING THE UNIT	13
ANTI-TIP SYSTEM	13
ELECTRICAL CONNECTION	15
AVOIDING USE OF EXTENSION CORDS	15
REVERSING THE DOOR	16
INSTALLING A CUSTOM DOOR PANEL	18
OPERATING THE UNIT	20
USING THE CONTROLS	20
TURNING THE UNIT ON	21
TURNING THE UNIT OFF	21
SETTING THE TEMPERATURE	21
CHANGING TEMPERATURE UNITS	21
TEMPERATURE DISPLAY MODE	22
FAST/QUICK COOLING MODE	22

LIGHTING CONTROL	22
SABBATH MODE	23
SHOWROOM MODE	23
SCREEN LOCK MODE	23
AUTO DEFROST MODE	24
DOOR OPEN ALERT.....	24
SENSOR ERROR ALERT.....	24
HIGH TEMPERATURE ALERT	25
LOW TEMPERATURE ALERT.....	25
FIRMWARE VERSION DISPLAY.....	25
EXPECTING NORMAL SOUNDS	26
DEALING WITH POWER FAILURE	26
CARE AND MAINTENANCE	27
CLEANING AND MAINTAINING THE UNIT	27
CLEANING THE UNIT'S EXTERIOR	27
CLEANING THE UNIT'S INTERIOR.....	27
LONG-TERM STORAGE /WINTERIZING.....	28
START- UP AFTER LONG-TERM STORAGE.....	28
CLEANING THE CONDENSER	29
TROUBLESHOOTING	30
DISPOSING THE UNIT	31
WARRANTY	32

1

SAFETY

SAFETY DEFINITIONS

The words DANGER, WARNING, CAUTION and NOTICE are used throughout this manual to highlight important information. Be certain that the meanings of these alerts are known to all who operate and install the appliance.

DANGER

Indicates a hazardous situation that, if not avoided, *will* result in death or serious injury.

WARNING

Indicates a hazardous situation that, if not avoided, *could* result in death or serious injury.

CAUTION

Indicates a hazardous situation that, if not avoided, *could* result in minor or moderate injury.

NOTICE

Indicates a situation that can cause damage to the appliance and/or the environment, or cause the appliance to operate improperly.

SAFETY PRECAUTIONS

POWER CORD PRECAUTIONS

- Do not use the appliance if the power cord is damaged. If the power cord is damaged, have a qualified electrician replace the power cord.
- Never lift, carry or drag the appliance by the power cord.
- Do not connect or disconnect the electric plug when your hands are wet.
- Never unplug the appliance by pulling on the power cord. Always grip the plug firmly and pull straight out from the outlet.

INSTALLING PRECAUTIONS

- Keep ventilation openings, in the appliance enclosure or in the built-in structure, clear of obstruction.
- To avoid a hazard due to instability of the appliance, the appliance must be installed in accordance with the instructions.

MOVING PRECAUTIONS

- When moving the appliance, do not turn it upside-down and do not unlevel it more than 45 degrees.
- Do not move the appliance without emptying it and securing the door in the closed position.

OTHER PRECAUTIONS

- To ensure proper ventilation for the appliance, keep obstructions away from the front of the unit.
- Keep fingers out of the “pinch point” areas. Clearance between the door and cabinet are necessarily small. Be careful closing the door when children are in the area.
- Do not touch the evaporator with your hand when the appliance is operating.
- Do not attempt to repair or replace any part of your appliance unless this manual specifically recommends it. Have a qualified technician perform all other service on the unit.
- Children 8 years of age and older and people with reduced physical, sensory or mental capabilities or lack of experience and knowledge can use this appliance if they have been given supervision or instruction concerning use of the appliance in a safe way and they understand the hazards involved.
- Never allow children to operate, play with or crawl inside the appliance.
- Never allow children to clean and maintain the appliance without supervision.
- Do not use the appliance other than for its intended purpose.
- Do not touch the condenser surfaces. They are sharp and can be easily damaged.
- Do not use electrical appliances inside the food storage compartments of the appliance, unless they are of the type recommended by the manufacturer.

CLEANING AND MAINTENANCE PRECAUTIONS

- Never clean the appliance parts with flammable fluids. Do not store or use gasoline or other flammable vapors and liquids in the vicinity of this appliance or any other appliances. The fumes can create a fire hazard or explosion.
- Do not use solvent-based cleaning agents or abrasives on the interior. These cleaners may transmit taste to the food, or damage or discolor the interior.
- If the appliance will not be used for a long time, thoroughly clean it before the next use. Carefully follow any instructions provided for cleaning or the use of sanitizing solution. Do not leave any solution inside the appliance after cleaning.

- Do not use mechanical devices or other means to accelerate the defrosting process, other than those recommended by the manufacturer.
- Do not damage the refrigerant circuit.

THE MANUFACTURER DISCLAIMS ANY RESPONSIBILITY IF THE ABOVE INSTRUCTIONS ARE NOT FOLLOWED.

2

SPECIFICATIONS

SAPPHIRE SERIES 3 24-INCH INDOOR/OUTDOOR PREMIUM REFRIGERATOR

FEATURES	24-INCH INDOOR/OUTDOOR REFRIGERATOR
Electrical Requirement	115V/60Hz
Maximum Amp Fuse	15 amp
Net Capacity	5.5 cu-ft (156 L)*
Temperature Setting	34°- 65°F (1°- 18°C)

**For ADA model SR243SSPRADA, the Net Capacity is 4.8 cu-ft (136 L).*



**SAPPHIRE SERIES 3 24-INCH INDOOR/OUTDOOR
PREMIUM BEVERAGE CENTER/REFRIGERATOR**

FEATURES	24-INCH INDOOR/OUTDOOR BEVERAGE CENTER/REFRIGERATOR
Electrical Requirement	115V/60Hz
Maximum Amp Fuse	15 amp
Net Capacity	5.5 cu-ft (156 L)*
Temperature Setting	34°- 65°F (1°- 18°C)

**For ADA model SBC243SSPRADA, the Net Capacity is 4.8 cu-ft (136 L).*



SAPPHIRE SERIES 3 24-INCH INDOOR/OUTDOOR PREMIUM SINGLE ZONE WINE CELLAR

FEATURES	24-INCH INDOOR/OUTDOOR SINGLE ZONE WINE CELLAR
Electrical Requirement	115V/60Hz
Maximum Amp Fuse	15 amp
Net Capacity	5.5 cu-ft (156 L)*
Temperature Setting	38°- 65°F (3°- 18°C)

**For ADA model SW243SZSSPRADA, the Net Capacity is 4.8 cu-ft (136 L).*



SAPPHIRE SERIES 3 24-INCH INDOOR/OUTDOOR PREMIUM DRAWER REFRIGERATOR

FEATURES	24-INCH INDOOR/OUTDOOR DRAWER REFRIGERATOR
Electrical Requirement	115V/60Hz
Maximum Amp Fuse	15 amp
Net Capacity	5.5 cu-ft (156 L)*
Temperature Setting	34°- 65°F (1°- 18°C)

**For 15" model SRD153SS/SSPR, the Net Capacity is 2.9 cu-ft (82 L).*



3

INSTALLING THE UNIT

WARNING

Fire/Explosion Hazard

DO NOT install in spaces containing gasoline engines, fuel tanks or fuel line fittings. This device does not meet federal requirement for ignition protection.

IMPORTANT:

Electrical Tips

- This appliance must be installed with all electrical connections in accordance with state and local codes.
- This unit requires a standard electrical supply properly grounded in accordance with National Electrical Code and local codes and ordinances.
- The fuse (or circuit breaker) size should be 15 amperes for 110V.
- The manufacturer recommends that you provide a separate circuit that services only your appliance. Use receptacles that cannot be turned off by a switch or pull chain.
- Plug the appliance into a grounded three-prong outlet. Do not remove the grounding prong, do not use an adapter, and do not use an extension cord.
- Do not kink, pinch or damage the power supply cord between the appliance and wall or cabinet.
- Before connecting the appliance to the power source, let it stand upright for approximately 4 hours. Following this step will reduce the possibility of a malfunction in the cooling system brought on by handling during transportation.
- Make sure to install the unit on a level surface.

Tips on Moving and Setting up the Unit

CAUTION

Tip Hazard

Be sure to use caution when working around an uninstalled unit. The unit is capable of tipping over if it is not installed and properly anchored.

- Use two or more people to move and install the appliance. Failure to do so can result in back or other injury.
- Remove the packing materials and clean the appliance before using it.

Factors affecting the Unit

- Never keep the appliance next to ovens, grills or other high-heat resources.
- Keep the appliance on a hard, level surface that can support the unit when the unit is full. Keep the appliance level to help ensure it works properly. You may need to make several adjustments to level the unit. If necessary, adjust the height of the appliance by turning the feet. See “Leveling the Unit” on page 13.
- To ensure proper service access and ventilation, all SAPPHIRE units should not have the grill openings covered. There are no additional requirements for venting at the top, side or rear of the unit.
- These units are to be installed under a counter. Follow the recommended spacing dimensions listed in this manual. Place the electrical supply in the recommended location.

REQUIRED CABINET OPENING

WARNING

Fire/Explosion Hazard

DO NOT install in spaces containing gasoline engines, fuel tanks or fuel line fittings. This device does not meet federal requirement for ignition protection. Failure to comply could result in injury or death.

A built-in installation will allow you to install the appliance under a counter or in a kitchen cabinet if you respect the required clearance space around the appliance. The appliance must be located to allow clearance for the electrical connection in the rear of the unit.

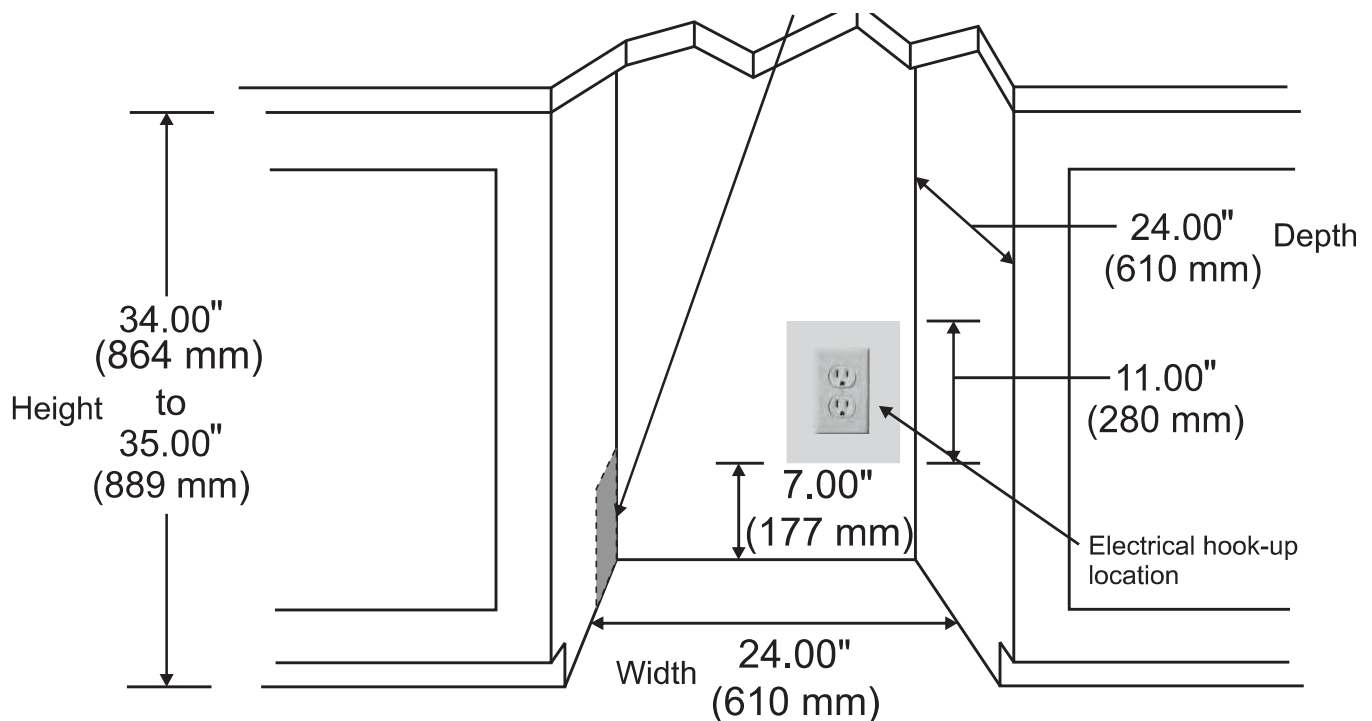
BUILT-IN CABINET DIMENSIONS

A built-in unit is designed for zero clearance at the top and each side of the unit. The unit uses fan-forced condenser cooling, which requires air circulation through the lower section of the unit.

NOTE: To ensure proper service access and ventilation, all SAPPHIRE units should not have the grill openings covered. There are no additional requirements for venting at the top, side or rear of the unit.

SAPPHIRE 24-INCH INDOOR CABINET DIMENSIONS

Recommended location for electrical connection in either adjacent cabinet.



* For 15-Inch model SRD153SSPR, the cabinet width is 15" 381(mm), height is 33-5/8"855(mm)to 34-5/8"880(mm).

LEVELING THE UNIT

The appliance requires leveling before it can work properly. If necessary, raise or lower the unit by turning the four leveling feet on the bottom. The manufacturer recommends using a carpenter's level to check the appliance.



NOTICE

It is extremely important that the appliance is level for optimum performance.

Adjust all four leveling feet evenly so that the top of the appliance is at the desired installation height and is level.

1. On a level surface, place a carpenter's level on top of the appliance to see if it is level from front to back and side to side.
2. Adjust the height of the leveling feet as follows:
 - Turn the leveling feet to the right to lower that side of the appliance.
 - Turn the leveling feet to the left to raise that side of the appliance.

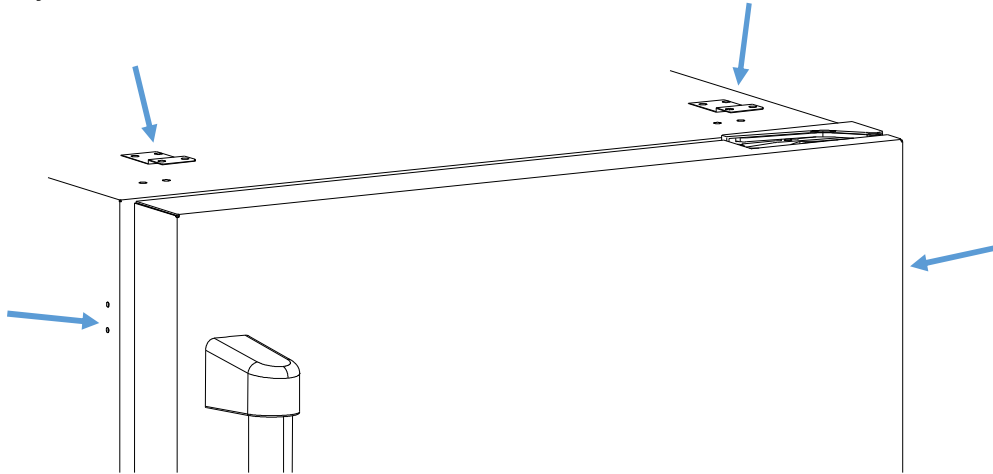
Anti-Tip System

To reduce the risk of tipping the unit by abnormal usage or improper loading, the appliance must be secured by properly installing the anti-tip device packed with the appliance.

All units has 2 sets of anti-tip brackets for top and bottom mounting.

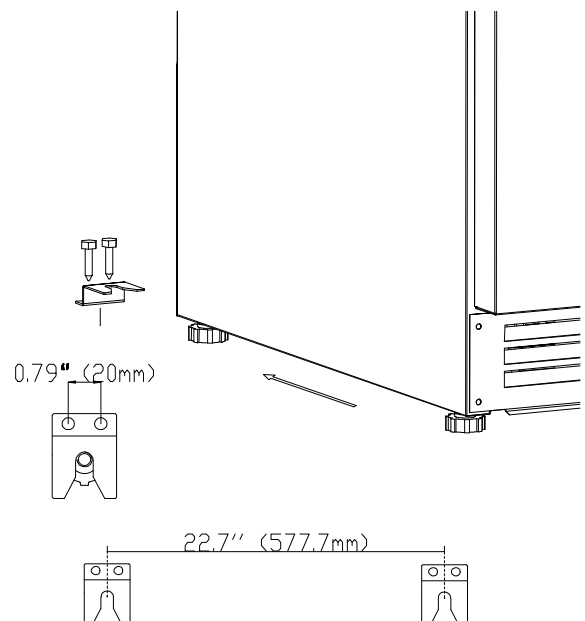
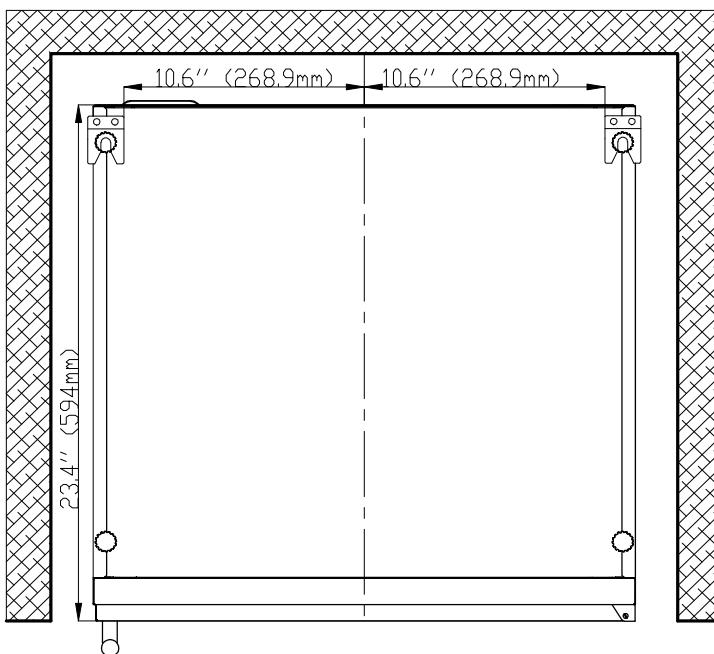
For Top or Side Mounting

- Once the appliance is in place and leveled, secure the two anti-tip brackets underneath the counter-top using the two provided screws.
- If the brackets for the anti-tip system cannot be secured above the appliance and no wood is available, re-locate the brackets for the anti-tip system to the side of the appliance for securing into an adjacent cabinet.



For Bottom Mounting

- Place the anti-tip bracket on the floor as shown in the figure on the right. An anti-tip bracket must be installed at both sides.
- Mark the locations of the 4 holes of the anti-tip bracket on the floor, refer to the location drawing on the left.
- Use a masonry drill bit to drill pilot holes, and install plastic anchors.
- Secure bracket to floor using screws.
- Slide appliance into position and make sure the leg engages the anti-tip bracket.



ELECTRICAL CONNECTION

Do not, under any circumstance, cut or remove the third (ground) prong from the power cord. For personal safety, you must properly ground this appliance. The power cord of this appliance features a three-prong grounding plug that mates with a standard three-prong grounding wall outlet to minimize the possibility of electric shock hazard from the appliance. Have a qualified electrician check the wall outlet and circuit to make sure the outlet is properly grounded. It is your responsibility and obligation to have a standard two-prong wall outlet replaced with a properly grounded three-prong wall outlet.

Always plug the appliance into its own individual electrical outlet. The voltage rating of the outlet must match the rating label on the appliance. This match provides the best performance and also prevents overloading the electrical circuits, which could cause a fire hazard from overheated wires.

Never unplug your appliance by pulling on the power cord. Always grip the plug firmly and pull straight out from the outlet.

Repair or replace immediately all power cords that have become frayed or damaged. Do not use a cord that shows cracks or abrasion damage along its length or at either end.

When moving the appliance, take care not to damage the power cord.

If the supply cord suffers damage, have the manufacturer, its service agent, or similarly qualified persons replace the supply cord to avoid a hazard.

AVOIDING USE OF EXTENSION CORDS

Because of potential safety hazards under certain conditions, the manufacturer strongly recommends that you do not use an extension cord with this appliance.

REVERSING THE DOOR (For SR243SS, SBC243SS, SW243SZSS)

This appliance has the capability of the door opening from either the left or right side. The appliance is delivered to you with the door opening from the left side. Follow these instructions should you desire to reverse the opening direction:

1. Check that the power cord is unplugged

2. Unscrew the hinge axis



3. Remove the door



4. Unscrew the top left hinge



5. Install it to the bottom right.



6. Unscrew the bottom left hinge



7. Install it to the top right



INSTALLING THE UNIT

SAPPHIRE

8. Unscrew the door limiter from the bottom of the door



9. Rotate the door, install the limiter to the bottom (used to be top)



10. Insert the door to the bottom hinge



11. Recover the top hinge



12. Completed



Accessories: door close assist mechanism



For models with Stainless Panel Ready Door

The panel ready door has an extra stainless shaft reinforce mechanism on top and bottom of the door, exchange their positions after rotated the door and before insert the door to hinges. Also the door close assistant are simpler on panel ready door, only the hook, disassembly and reinstall it accordingly.



INSTALLING A CUSTOM DOOR PANEL

For Beverage Center, Wine Cooler, Refrigerator

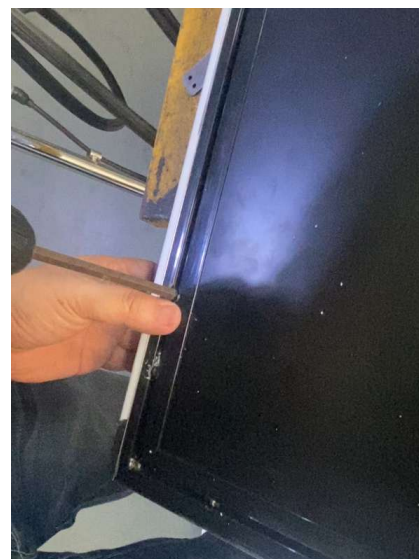
1. Remove the door from the unit, then remove the Shaft reinforce mechanism.



2. Remove the door seal to gain access to the custom door panel mounting holes.



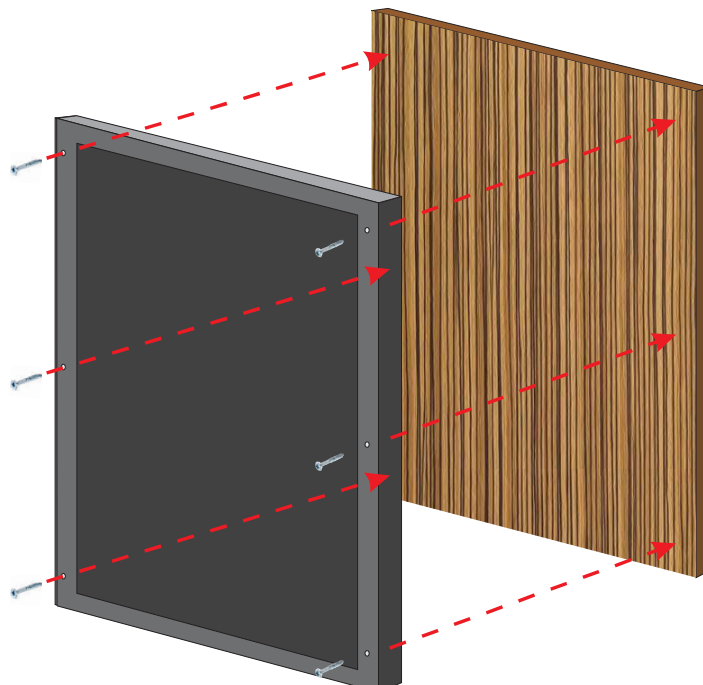
3. Unscrew from the door gasket slots to uninstall the door handle .



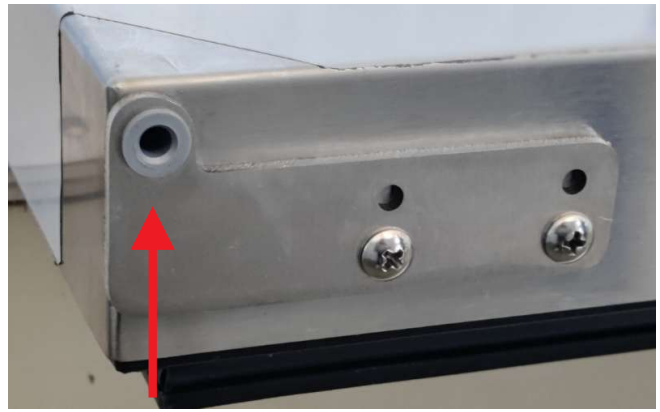
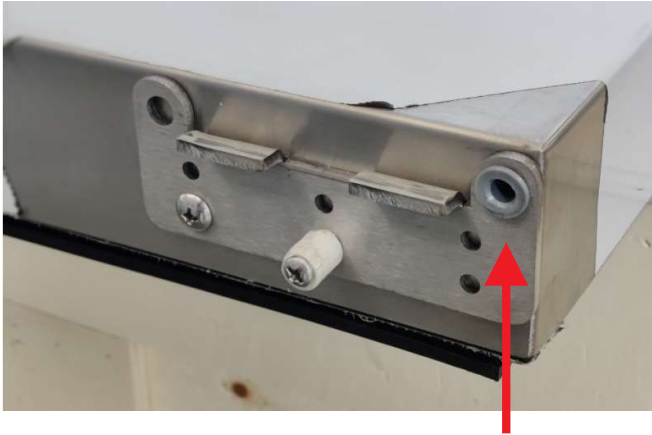
4. Flap the front panel to let the inner door separate from the stainless outer shell and draw out.



5. Align the top of the custom door pane flush with the top of the door, and adjust the overlap of the custom door panel so it is equal on both sides of the door. Secure the custom door panel to the door using ten wood screws (provided).



6. Install the shaft reinforcement mechanism back on top and bottom of the door, then drill the top and bottom hinge shaft holes on the door panel. Install the top and bottom shaft sleeves in to the drilled holes.



7. Reinstall the door seal. Be sure the seal is properly seated and reinstall the door to the unit.

For Drawer Refrigerator

To install door panel on drawer refrigerator:

Hold the clips to remove the drawer from the slider first, then the same procedure as above, except the drawer outer shell has two extra screws at the bottom that need to be removed before separating it from the inner door.



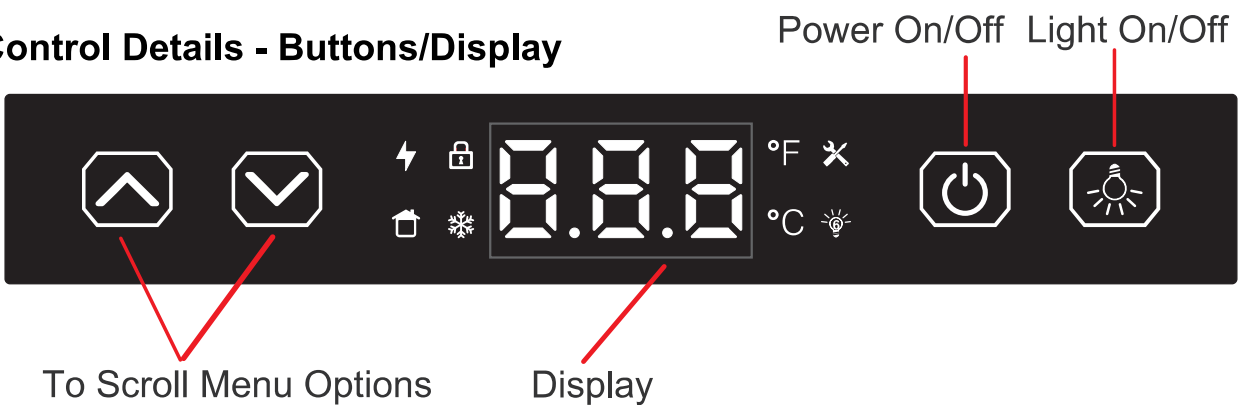
4 | OPERATING THE UNIT

USING THE CONTROLS

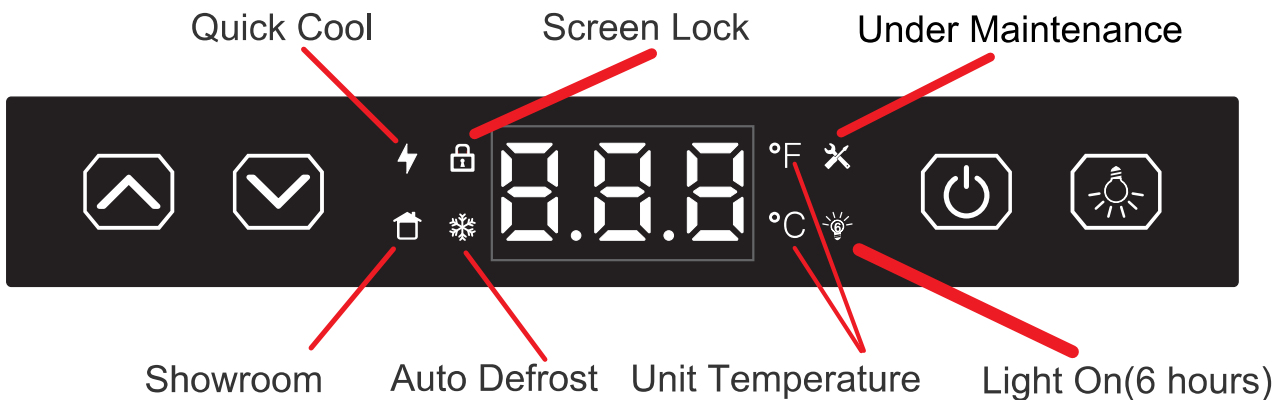
The control panel is located at the top of the appliance.

NOTE: You have 10 seconds to make a control change before the display reverts to the default screen.

Control Details - Buttons/Display



Control Details - Backlit Features



TURNING THE UNIT ON

Press the ON/OFF button

Press the POWER button once



TURNING THE UNIT OFF

Press and hold the ON/OFF button for 3 seconds

Press the POWER button and hold for 3 seconds



SETTING THE TEMPERATURE

Press the UP or DOWN arrow and the temperature will start flashing, then press the UP or DOWN arrow again to increase or decrease the temperature setting. The desired temperature will be auto-saved after 10 seconds.

Press the UP or DOWN arrow to set the temperature



CHANGING TEMPERATURE UNITS

Press and hold the UP and DOWN arrows for at least 3 seconds to change the displaying temperature units between Fahrenheit and Celsius. When the temperature units convert, the Celsius and Fahrenheit indicator will switch accordingly.

Press and hold the UP and DOWN arrows for at least 3 seconds



TEMPERATURE DISPLAY MODE

Press and hold the DOWN arrows for at least 6 seconds to switch the Panel Display Temperature from the setting temp to the Real Time Temperature of the cabinet. The refresh rate of the real time temperature is 1 minute.

Press and hold the DOWN arrows for at least 6 seconds



FAST/QUICK COOLING MODE

Press and hold the UP arrow and POWER button for at least 3 seconds to engage Fast/Quick cooling mode. The QUICK-COOL indicator icon will light up and the unit will keep cooling and ignore the defrosting stop till reach the coolest temperature setting.

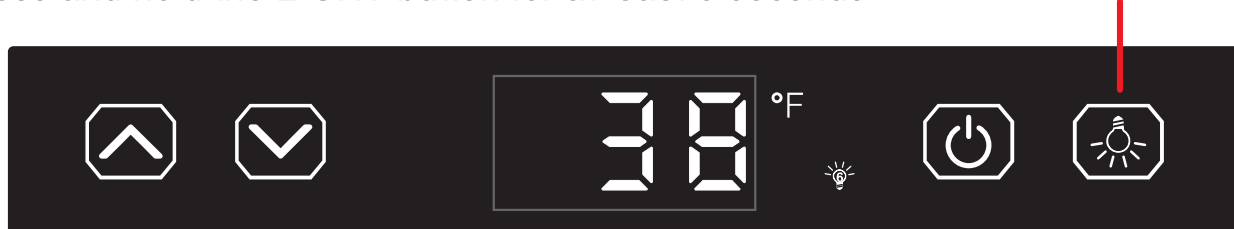
Press and hold the UP arrow and POWER button for at least 3 seconds



LIGHTING CONTROL

Press the LIGHT button to switch the light on/off when the door is open. Press and hold the LIGHT button for over 6 seconds to start the LIGHT ON mode. Press the LIGHT button again to end the LIGHT ON function. In LIGHT ON mode, the LIGHT-ON indicator icon will light up and the light will keep lit for 6 hours, with or without door open.

Press and hold the LIGHT button for at least 6 seconds



SABBATH MODE

Press and hold the UP arrow and LIGHT button for at least 6 seconds to enter and also to exit SABBATH MODE. This will shut off the screen display, the operating sounds, and the light will remain off while the unit still running automatically according to the previous setting.

Press and hold the UP arrow and LIGHT button for at least 6 seconds



SHOWROOM MODE

Press and hold the DOWN arrow and LIGHT button for at least 6 seconds to enter and also to exit SHOWROOM MODE. The Showroom indicator icon will light up in this mode, it's for dealers to display the unit. during showroom mode, the light, evaporator fan, the panel display and all functions can be set but the compressor won't actually work.

Press and hold the DOWN arrow and LIGHT button for at least 6 seconds



SCREEN LOCK MODE

Press and hold the POWER and LIGHT buttons for over 3 seconds to lock/unlock the screen. The Screen-lock indicator icon will light up during this stage.

Press and hold the POWER button and LIGHT button for at least 3 seconds



AUTO DEFROST MODE

Auto Defrost is automatic and requires no user interaction. The Defrost indicator icon will light up and the compressor will stop for about 30 minutes until the defrost is complete.

No user interaction is required



DOOR OPEN ALERT

Display will show 'dr' with 1Hz alarm sounds. The threshold of the door opening check is 5 minutes. Press any button or close the door to temporarily stop the alarm.

Press any button to stop the alarm



SENSOR ERROR ALERT

Self-diagnosis finds the Temperature Sensor Error. The Error will display and flash with 3 alarm sounds every 30 seconds, with the Maintenance indicator icon lights up, meanwhile the system will running intermittently. Press any button or close the door to stop the alarm.

Press any button to stop the alarm



HIGH TEMPERATURE ALERT

When the actual temperature is higher than the setting temperature, for a certain value over a fixed time, the alarm will sound and display the HI error code with the Maintenance indicator icon lights up. The system will continue running in this stage. Press any button or close the door to stop the alarm.

Press any button to stop the alarm



LOW TEMPERATURE ALERT

When the system detects the temperature lower than 25°F over 30 minutes, the LOW TEMPERATURE ALERT will activate. The system will stop running in this stage with the Maintenance indicator icon lights up. Press any button or close the door to stop the alarm.

Press any button to stop the alarm



FIRMWARE VERSION DISPLAY

Press and hold the DOWN arrow and the POWER button to display the current firmware version.



EXPECTING NORMAL SOUNDS

Your new appliance may make sounds that are not familiar to you. Hard surfaces like the floor and walls can make the sounds seem louder than they actually are. The following describes the kinds of sounds that might be new to you and the source of those sounds:

- Rattling noises may come from the flow of the refrigerant. Items stored on top of the appliance can also make noises.
- The high-efficiency compressor may make a pulsating or high-pitched sound.
- You may hear the sound of the condenser fan forcing air over the condenser.

DEALING WITH POWER FAILURE

Most power failures are corrected within a few hours and should not affect the temperature of your appliance if you minimize the number of times you open the appliance door. If the power is going to be off for a longer period of time, take the proper steps to disconnect your appliance.

WARNING

Failure to unplug the appliance could result in electrical shock or personal injury.

NOTE: When the appliance is operating, the evaporator is the only component that is cold.

5

CARE AND MAINTENANCE

WARNING

Electrical Shock Hazard

Always disconnect power at the source before working on the unit. Failure to unplug the appliance could result in electrical shock or personal injury.

- Do not touch the power plug when your hands are wet.
- Never unplug the unit by pulling on the cord. Grasp the plug and pull it out firmly.

CLEANING AND MAINTAINING THE UNIT

Perform periodic cleaning and proper maintenance to ensure efficiency top performance and long life. The maintenance intervals listed in this manual are based on normal conditions. You may want to shorten the intervals if you have pets or other special considerations.

Periodically vacuum dust and dirt from the condenser, which is located behind the grill at the bottom front of the unit.

CLEANING THE UNIT'S EXTERIOR

Clean the door and cabinet with a mild detergent and warm-water solution, such as 1 oz. (28 g) of dish-washing liquid mixed with 2 gallons of warm water. Do not use solvent-based or abrasive cleaners. Use a soft sponge and rinse the unit with clean water. Wipe the unit with a soft, clean towel to prevent water spotting.

Clean stainless steel with a mild detergent, a warm-water solution and a damp cloth. Never use an abrasive cleaning agent.

CLEANING THE UNIT'S INTERIOR

When necessary, thoroughly clean the inside of the unit with mild soap and water. Do not use electrical heating devices or sharp or pointed tools when defrosting the unit.

When cleaning, leave the unit turned off and leave the door open. Leaving the door open allows air to dry the inside of the cabinet, reducing the chance for mildew and damage to the mold mechanism's components.

EXTENDED PERIODS OF NON-USE

WARNING

Electrical Shock Hazard

Always disconnect power at the source before working on the unit.

LONG-TERM STORAGE / WINTERIZING

If the outdoor refrigerator will be exposed to temperatures of 38°F (3.3°C) or less, perform below steps to winterize your refrigerator that will keep it in good condition while facing the winter elements. It is important to clean and dry this appliance to prevent severe mold and mildew growth from engulfing the fridge's interior.

1. Turn the unit OFF by pressing the POWER button on the controller.
2. Remove all food and drink contents from the refrigerator.
3. Unplug the unit from the power outlet. It is also recommended that the power to the outlet be turned-off if the circuit is not required for other items during the Winter season.
4. Place all cords in a small bag or tie them together with a piece of scrap cloth.
5. If necessary, move the unit so you can gain access to the rear of the product.
6. Remove the front toe kick, and use a brush and vacuum to clean dirt and debris from beneath the unit. Thoroughly clean the toe kick and re-install on the unit.
7. Remove the rear access cover, and use a brush and vacuum to clean dirt and debris from the machine compartment.
8. Check if the plastic defrost drain pan located upon the compressor contains water, use a sponge to remove as much water as possible.
9. Thoroughly clean the rear access cover and re-install on the unit.
10. Clean the exterior and interior of refrigerator thoroughly. Wipe down and dry the refrigerator with rags or paper towels after it has been cleaned. Ensure all water has been removed from the unit.
11. Leave the refrigerator door open to prevent formation of mold and mildew. Open door a minimum of 2" (50 mm) to provide the necessary ventilation.
12. Kindly advise no cover on the unit, as this can trap condensation. If you are concerned about exposure to the elements, use a synthetic cover that will not hold moisture to protect the appliance, though the door should remain open as much as possible.
13. After completion of the above, you may choose to store the unit indoors, although this is not required.

NOTICE

Never pull on the power cord to unplug the appliance from the electrical outlet. Grasp the plug of the power cord and pull it out firmly.

Start-Up After Long-Term Storage:

1. If stored outside, it is recommended that the unit again be thoroughly inspected per the storage instructions above to address any dirt or debris from the weather and/or animals/insects.
2. Connect the unit to electrical power.
3. Turn unit on and confirm your desired control settings.
4. Allow 24-hrs for the unit to stabilize before loading contents.

CLEANING THE CONDENSER

WARNING

Electrical Shock Hazard

Always disconnect the power at the source before working on the unit.

CAUTION

Sharp Object Hazard

DO NOT touch the condenser surface. The condenser has sharp edges and can be easily damaged.

A dirty or clogged condenser prevents proper air flow and causes higher-than-recommended operating temperatures that may lead to component failure. Clean the condenser or have it cleaned at least once every six months.

1. Unplug the appliance or disconnect power.
2. Remove the two screws under the front of the unit. Gently pull on the grill and remove it.
3. Remove dirt and lint from the condenser and the unit compartment with the brush attachment of a vacuum cleaner.
4. Position the grill on the unit and secure it with two screws.
5. Plug in the appliance or reconnect power.

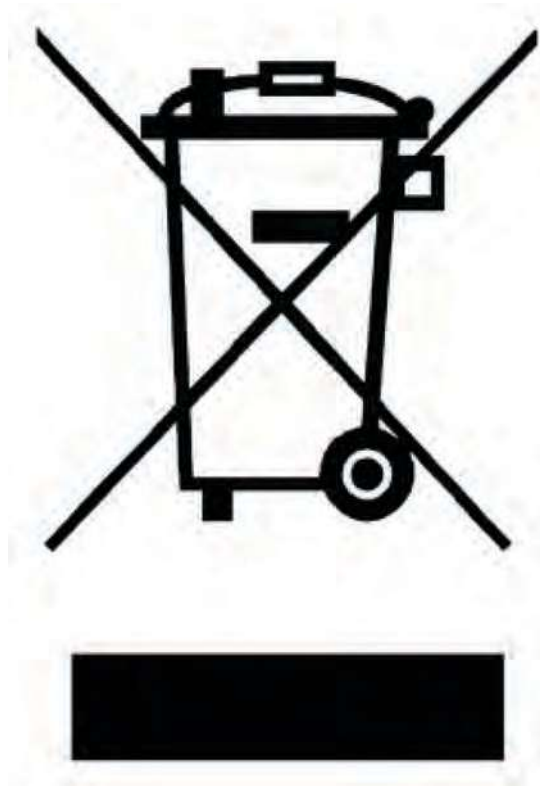
6

TROUBLESHOOTING

PROBLEM	POSSIBLE CAUSES	SOLUTIONS
<ul style="list-style-type: none"> The appliance does not operate. 	<ul style="list-style-type: none"> Power failure. Appliance not plugged in. House fuse blown or circuit breaker tripped. 	<ul style="list-style-type: none"> Plug in the appliance. Replace blown fuse or reset circuit breaker.
<ul style="list-style-type: none"> The appliance is not cold enough. 	<ul style="list-style-type: none"> Door is opened too often. Door does not close completely. Door seal does not seal properly. Front bottom grill does not have sufficient ventilation. Appliance too close to a heat source. 	<ul style="list-style-type: none"> Do not open door too frequently. See “The Door Does Not Close Properly” below. Be sure door seal is properly seated in groove. Grills must be completely unobstructed. Keep appliance away from heat sources.
<ul style="list-style-type: none"> The appliance turns on and off frequently. 	<ul style="list-style-type: none"> Large amount of contents has been added. Door is open too often. Door does not close completely. Door seal not sealing properly. 	<ul style="list-style-type: none"> Reduce amount of content added at a time. Do not open door too frequently. See “The Door Does Not Close Properly” below. Be sure door seal is properly seated in groove.
<ul style="list-style-type: none"> The door does not close properly. 	<ul style="list-style-type: none"> Appliance not level. Door was reversed and not properly installed. The shelves are out of position. 	<ul style="list-style-type: none"> Be sure appliance is installed on hard level surface. Verify door is properly installed. Verify shelves are properly installed.
<ul style="list-style-type: none"> Noise during operation. 	<ul style="list-style-type: none"> Feet are not leveled. Certain sounds are normal. 	<ul style="list-style-type: none"> Level the feet. See “Leveling the Unit” on page 13. See “Expecting Normal Sounds” on page 26.
<ul style="list-style-type: none"> The compressor works abnormally with a buzzing noise. 	<ul style="list-style-type: none"> The voltage is lower than recommended. 	<ul style="list-style-type: none"> Stop the appliance and do not restart until the voltage is normal.

7

DISPOSING THE UNIT



This symbol on the product or its packaging indicates that you cannot treat this product as normal domestic trash; you must hand it in to a collection point for recycling electric and electronic appliances. Your contribution to the correct disposal of this product protects the environment.

Contact your local municipal authority if you need more information about recycling this product.

DANGER

Always remove the door and keep the shelves in place when discarding this appliance so children may not become entrapped.

WARRANTY

LIMITED WARRANTY COVERAGE

The Legacy Companies, warrants to the original purchaser of its SAPPHIRE products that they will be free from defects in materials and workmanship for the following time periods from the date of purchase shown on the sales receipt:

Two (2) year Parts & On-site Labor

Five (5) years Compressor Warranty (Parts only)

WARRANTY EXCLUSIONS

NO CONSEQUENTIAL DAMAGES: SAPPHIRE and The Legacy Companies are not responsible for any economic loss or special, indirect or consequential damages including without limitation; loss of revenue and loss or damage arising from food or product spoilage claims.

WARRANTY IS NOT TRANSFERABLE: This warranty is not transferable or assignable and applies only to the original verified purchaser.

NO IMPLIED WARRANTY OF MERCHANTABILITY OR FITNESS FOR PARTICULAR SERVICE: There are no other warranties statutory, express, or implied. This Limited Warranty is the exclusive warranty and made in lieu of all other warranties including any implied warranties or any warranties of merchantability or fitness for a particular purpose.

FILING WARRANTY CLAIMS: All warranty claims for SAPPHIRE products must be made directly through The Legacy Company's Technical Service Department. All claims should include: model and serial number, proof of purchase, date of installation, location purchased, and all pertinent information supporting the existence of the claim.

IMPROPER ELECTRICAL AND WATER CONNECTIONS: SAPPHIRE and The Legacy Companies are not responsible for the repair or replacement of any failed or damaged components resulting from electrical power failure, the use of extension cords, low voltage or voltage spikes to the unit. Likewise, repair or replacement attributable to low water pressure, high water pressure or contaminated water are not covered by this Limited Warranty.

IMPROPER USAGE: Neither SAPPHIRE nor The Legacy Companies assumes liability for parts or labor coverage for component failure or other damages resulting from improper usage or installation or failure to clean and/or maintain the product as set forth in the Owner's Manual provided with each unit.

CONSUMABLES: This warranty does not include consumable parts such as water filters and light bulbs.

ADJUSTMENTS & CALIBRATIONS: Adjustments including calibrations, leveling, tightening of fasteners, or utility connections normally associated with the original installation are the responsibility of the dealer, installer or the end user and not the responsibility of SAPPHIRE or The Legacy Companies and will not be considered warranty issues for this Limited Warranty.

CONSEQUENTIAL DAMAGES: This warranty does not cover any defect due to, or resulting from, ordinary wear and tear, handling, abuse, misuse, or harsh chemical action, nor shall it extend to any product from which the serial number has been removed or altered, or modifications made by unauthorized service personnel or damage by flood, fire, earthquake or other Acts of God.

OUTSIDE U.S. & CANADA: This warranty does not apply to, and SAPPHIRE and The Legacy Companies are not responsible for any warranty claims made on products sold or used outside of the United States and Canada or any territories of the United States of America.

ALL REPAIRS AND SERVICE MUST BE MADE BY A SAPPHIRE AUTHORIZED TECHNICIAN.

Customer Service: 1.866.754.6672
SAPPHIRE Appliances | The Legacy Companies
3355 Enterprise Avenue, Suite 160, Weston, FL 33331
email@sapphireappliances.com | SapphireAppliances.com



“Sapphire”

The Beautiful & Adaptable
Sapphire-bellied Hummingbird
Lepidopyga lilliae



SAPPHIRE

SapphireAppliances.com | 1.866.754.6672
SAPPHIRE Appliances | The Legacy Companies
3355 Enterprise Avenue, Suite 160, Weston, FL 33331