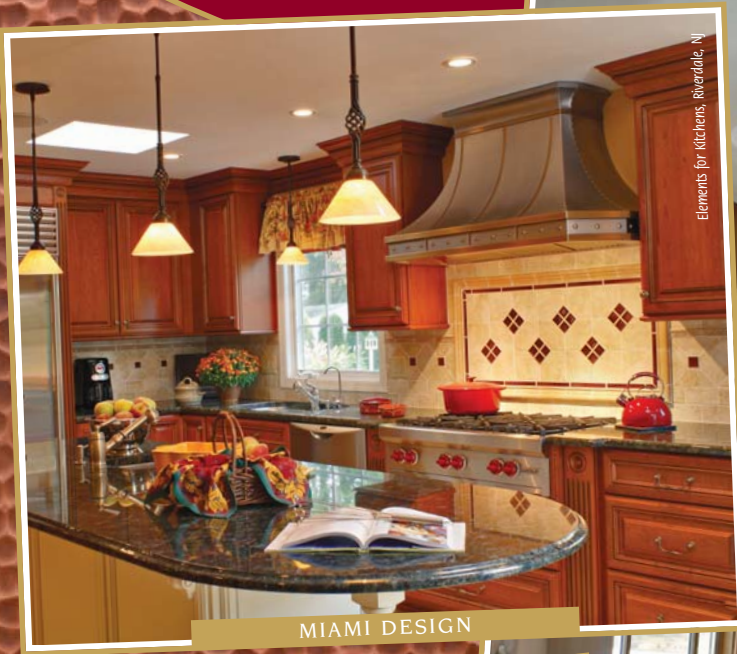


RangeCraft

Range Hoods Made To Order

Create The Ultimate Kitchen Masterpiece



MIAMI DESIGN



HI-RISER TRIM-LINE DESIGN



HARDING DESIGN

ANY DESIGN • ANY MATERIAL • ANY FINISH

QUALITY CRAFTED IN THE USA



RangeCraft

Since 1972, RangeCraft has been a leading industry manufacturer of metal range hoods. RangeCraft specializes in high quality, custom designed hoods while offering a variety of classic designs. RangeCraft maintains its standard of excellence with state of the art production machinery to insure the finest quality and selection of range hoods and universal inserts for kitchen ventilation. Form and function are incorporated in all of our range hoods. Select from a wide variety of existing designs! Or, we can create and manufacture a custom range hood designed just for you! All RangeCraft's products have a European flair, but are designed and built in the USA.



Elements for Kitchens, Riverdale, NJ

Wall mounted Baroque painted custom color to match range with Mirror Brass Trims and Custom Crown

ASPEN

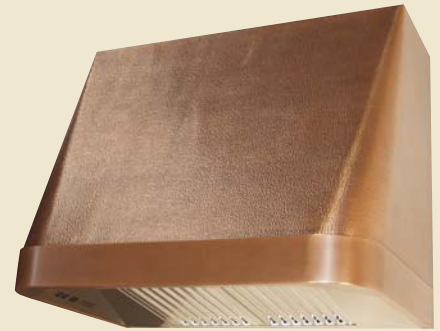
The Aspen family of range hoods is a very popular model with its cool smooth lines.



Non Directional Stainless Steel with Antique Copper Trim & Buttons



Antique Copper



Hammered Copper with Smooth Antique Copper Trim



Non Directional Stainless Steel with Antique Copper Trim



Non Directional Stainless Steel with Hammered Copper Trim & Buttons



Antique Copper with Antique Brass Trim & Bands with Rivets

BAROQUE

Our Baroque line of range hoods offers a classic contemporary design style. Features seamless or riveted rounded corners, or decorative bands.



Custom Baroque in Antique Cooper with Non Directional Brass & Pot Rail

BOX HOODS

Featuring a modern design, this line of hoods can be made duct free as well!



Brushed Stainless Steel with Pot Rails



Brushed Stainless Steel

IMPORTANT NOTE:

Most models utilize Copper, Brass, Stainless Steel, or a combination of any of these materials. Finishes include non directional, mirror or antique. All models are available wall or ceiling mounted with our super quiet internal fan or for use with a remote fan. "MICRO" baffle filters and halogen lights are standard. LED lights are available.

BROADWAY

Our "show stopping" Broadway models are just the ticket for your kitchen ventilation.



Non Directional Stainless Steel



Brushed Stainless Steel



Antique Copper with Antique Brass Trim, Bands & Buttons



Ceiling Canterbury – Antique Copper with Rivets & Antique Brass Trim & Buttons

CANTERBURY

Functional and innovative design styling tells the tale of our Canterbury models. Canterbury hoods feature smoothly rounded corners and can be dressed with rivets and decorative bands.



Non Directional Stainless Steel with Bands & Chrome Pot Rail



Custom Canterbury painted black with Non-Directional Stainless Steel Bands & Rivets

Kitchen by Marcy Wells, Sticks N' Stones

CONVEX

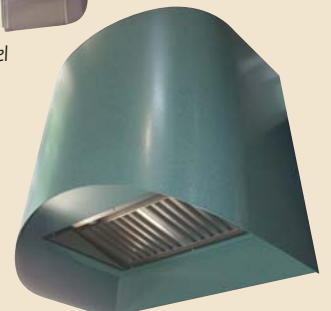
The smooth curved lines of our Convex Range Hoods add a more modern touch to your kitchen.



Brushed Stainless Steel



Non Directional Stainless Steel



Powder Coated in Decorative Color



Ceiling Canterbury - Antique Copper with
Antique Copper Bands, Rivet & Buttons

DELTA

Our Delta line of hoods offers an elegantly arched yet contemporary style to your kitchen. With its sleek form, its a great hood for a room where you don't want to block gorgeous views.



Brushed Stainless Steel
(Duct Free Version Shown)



Brushed Stainless Steel



Antique Copper with Antique Brass Bands



Non Directional Stainless Steel
with Antique Copper Bands

HARDING

Featuring a "classic" RangeCraft design, this line is available in Copper, Brass, Stainless Steel, as well as a choice of decorative colors. Combine materials, colors and decorative bands for a look all your own!

HI-RISER

Don't let the simplistically straight lines of our Hi-Riser Range Hoods fool you! This line is designed for visual appeal and functionality to enhance the look of your room while efficiently handling your kitchen ventilation needs.



Deluxe Hi-Riser in Brushed Stainless Steel with Pot Rail



Deluxe Hi-Riser Antique Copper
with Antique Brass Trim & Pot Rail



Deluxe Hi-Riser Non Directional Stainless Steel

IMPORTANT NOTE:

Most models utilize Copper, Brass, Stainless Steel, or a combination of any of these materials. Finishes include non directional, mirror or antique. All models are available wall or ceiling mounted with our super quiet internal fan or for use with a remote fan. "MICRO" baffle filters and halogen lights are standard. LED lights are available.



Ceiling mounted Harding in
Antique Hammered Copper with
Non-Directional Stainless Steel Bands

HI-RISER CURVETTE

The striking appearance of our Hi-Riser Curvette line offers elegant form and functionality. These models are available with beautifully rounded corners.



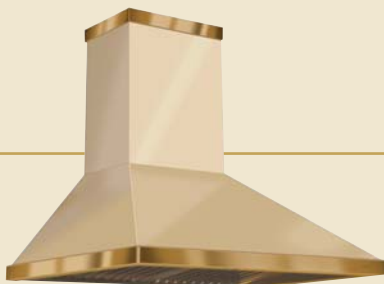
Non Directional Stainless Steel with Bullnose Trim



Antique Copper with Buttons on Trim



Ceiling mounted "DUCT FREE" in smooth Antique Copper with Stainless Trims



Powder Coated Ivory



Powder Coated Charcoal Gray



TLT Version in Antique Copper with Non Directional Stainless Steel Bands & Trim

HI-RISER TRIM-LINE

The straight lines of our Trim-Line Range Hoods offer conventional looks with modern kitchen ventilation technology.



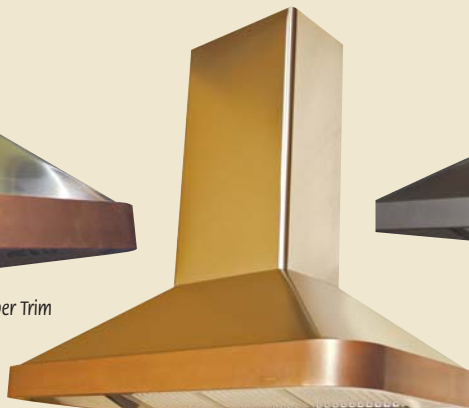
Antique Copper with Hammered Copper Trim

LANDAU

Let them talk! The Landau family of range hoods offers a simple design with a dramatic twist to your kitchen.



Mirror Stainless Steel with Antique Copper Trim



Brushed Stainless Steel with Antique Copper Trim



Non Directional Stainless Steel

IMPORTANT NOTE:
Most models utilize Copper, Brass, Stainless Steel, or a combination of any of these materials. Finishes include non directional, mirror or antique. All models are available wall or ceiling mounted with our super quiet internal fan or for use with a remote fan. "MICRO" baffle filters and halogen lights are standard. LED lights are available.

KOTLER

The Kotler family of range hoods is styled to combine traditional design style and practical function. Available seamed with "Old World" solid rivets or seamless corners. Dress it up with decorative bands!



Non Directional Stainless Steel with Custom Banded Trim



Antique Copper with Antique Copper Bands, Trim & Brass Pot Rail

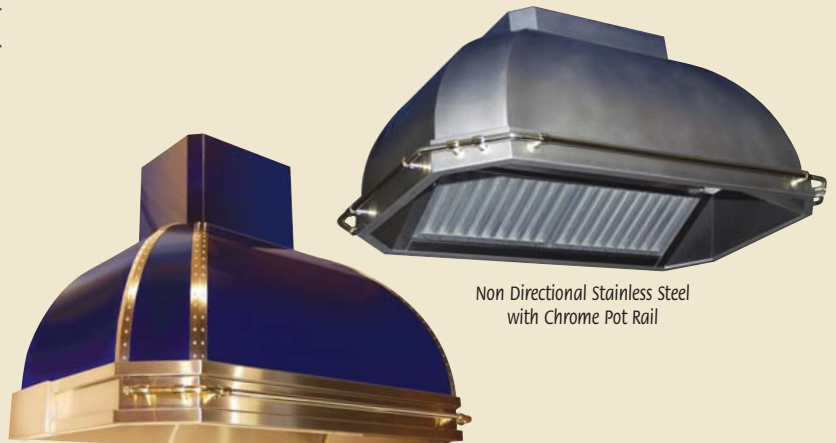


Antique Copper with Brass Trim & Pot Rail



Antique Copper with Antique Copper Bands & Rivets

Kitchen by Nancy Wells, Sticks N' Stones



Painted Custom Blue with Stainless Steel Bands, Rivets & Pot Rail

Non Directional Stainless Steel with Chrome Pot Rail



Brushed Stainless Steel



Wall mounted Madison in Brushed Stainless Steel with custom angled ceiling

MADISON

A version of the Box Hood with a little more pizzazz! This contemporary style adds functionality and looks great in any kitchen.

MARLOW

Unique form flows from our Marlow family of hoods. Designed in Copper, Brass, Stainless Steel, or your choice of decorator colors. Or, combine materials and colors to create your own personal design.



Non Directional Stainless Steel with Brushed Trim



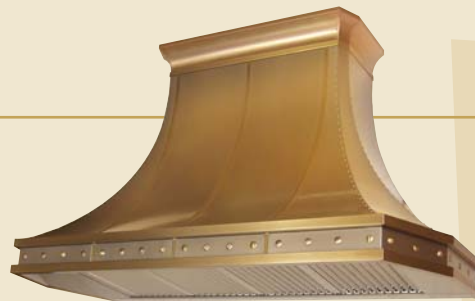
Non Directional Stainless Steel



Brushed Stainless Steel



Hammered Antique Copper with Stainless Steel Accents



Stainless Steel with Antique Brass Accents



Wall mounted Miami painted white with Stainless Steel accents

Kitchen by Marcy Wells, Sticks N' Stones



Hammered Copper with Antique Brass Accents

MIAMI

One of our most popular lines, the decorative Miami family of range hoods displays a distinctive design elegance.

PRO-LINE

As the name implies, this line features professional good looks utilizing a practical application for your ventilation needs. Also available duct free.



Non Directional Stainless Steel



PROLINE Curvette in Non Directional Stainless Steel



Antique Copper



The Pro-Line Foldaway offers ventilation in **both** the open and closed hood position.

PRO-LINE FOLDAWAY

RangeCraft's Pro-Line Foldaway Range Hood is designed to fold back into the cabinet when not in use. It is hinged to open over the cooktop area allowing it to trap all pollutants when cooking. It also offers higher efficiency due to a larger capture area. The powerful yet quiet Pro-Line Foldaway range hood turns on simply — just pull it out. Plus, it features a space saving option in its retracted position.



Wall mounted Miami in Non-Directional Stainless Steel with Antique Brass Accents

ROCOCO

Make a dramatic statement in your kitchen with our Rococo Range Hoods!



Wall Mounted Rococo-Royale in Brushed Stainless Steel with Antique Copper Accents.



"Rococo Royale" in Antique Copper with Stainless Steel Buttons



Antique Copper with Antique Brass Trim & Crown Molding



Hammered Antique Copper with Stainless Steel Trim & Copper Buttons



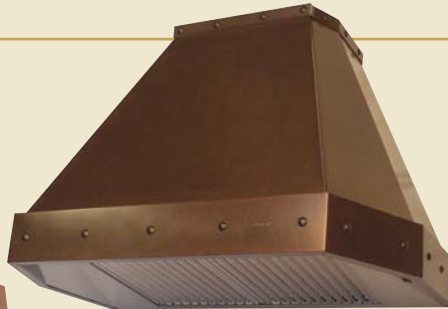
Non Directional Copper with Non Directional Brass Bands

SCHNEIDER

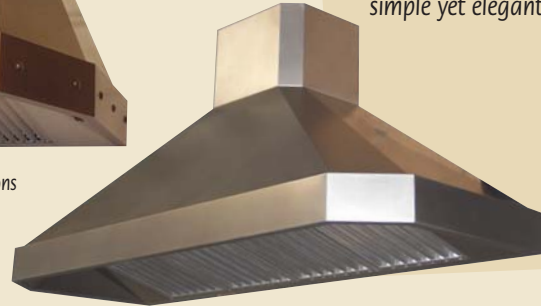
Stand back and admire! The beautiful lines of the Schneider family of range hoods feature simple yet elegant design.



Stainless Steel with Mirror Copper Trim



Antique Copper with Buttons



Non Directional Stainless Steel

STACK

Modern appeal explains the aesthetic popularity of our Stack Range Hoods. The Stack model is available with or without pot rails and features rounded corners.



Non Directional Stainless Steel with Chrome Pot Rail



Brushed Stainless Steel with Chrome Pot Rail



Brushed Stainless Steel with Pot Rail

TACONIC

Strong "old world" charm and modern efficiency are combined for outstanding looks and performance! Taconic Range Hoods are seamed with our "Old World" solid rivets or offer seamless corners. Dress your hood with our decorative bands.



Antique Copper with Stainless Steel Trim
Corner Bands & Crown Molding



Antique Brass with Bands & Custom Double Trim



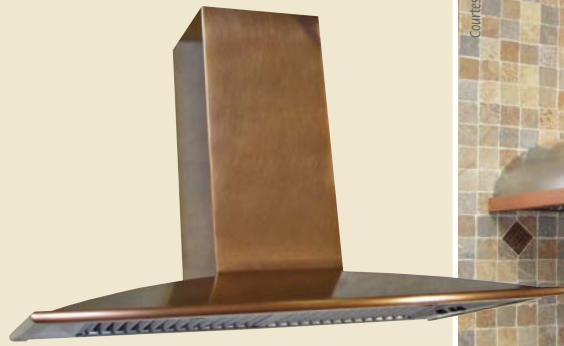
Wall Mounted Taconic in Antique Copper
Customized with Bullnose Trim



Hammered Antique Copper with Non Directional
Stainless Steel Trim, Corner Bands & Custom Crown

VISER

Celebrate the unique lines fabricated in the Viser family of range hoods. Available with flat or rounded face.



Antique Copper with Bull Nose Trim



Custom Viser Curvette



Brushed Stainless Steel with Customized Flat Front

VOGUE

It's all about "style" with the Vogue Range Hood product line which is available in two unique styles.



Antique Copper with Pot Rail



Brushed Stainless Steel



CUSTOM

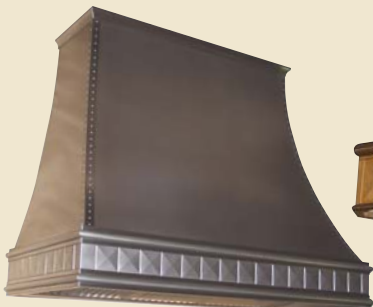
Our uniquely designed Custom Hoods are classified in a category unto themselves. An innovative variety of shapes, sizes, materials and finishes! For a unique touch, rounded corners are available and joints can be seamless or dressed with "Old World" solid rivets. Buttons, bands and other decorations such as pot racks are available to make your hood "one of a kind."



RangeCraft



Courtesy of Allimmo, NY



CUSTOMIZED HOODS MADE TO ORDER



This Custom Range Hood measures 126" wide by 92" deep by 45" high. It is constructed out of Hand Hammered Antique Copper with smooth Antique Copper Tiles. Hood features Trims and Crown Molding in Non-Directional Stainless Steel. Custom Made, it houses 18 Micro Baffle Filters, Removable Grease Trays, 16 LED Lights and has the added feature of replacing air taken out of the kitchen. It has an entirely Concealed Mounting System that makes for easy installation as well.



Home Profi Range Hood

OUTDOOR

Most of our designs are available for outdoor use under porches or semi-enclosed patios.



Roof Vent & Hood in Stainless Steel



COUNTERTOPS & SINKS

RangeCraft also specializes in the creation of custom sinks and countertops for the kitchen... to complement your custom designed range hood.



Antique Hammered Copper Bracket



Antique Hammered Copper with Custom Support Bracket to Match



Antique Brass



Antique Copper with Hammered Apron



Antique Copper



Non Directional Copper with Hammered Apron

ROOF VENTS

- Heavy Metal Construction
- Uses Wind to Create Updraft - Automatically
- Easy Installation



WALL VENTS

Add another spark of detail to your home with our easy to install, versatile wall caps.

Wall Damper shown in Stainless Steel

IMPORTANT NOTE:

Most models utilize Copper, Brass, Stainless Steel, or a combination of any of these materials. Finishes include non directional, mirror or antique. All models are available wall or ceiling mounted with our super quiet internal fan or for use with a remote fan. "MICRO" baffle filters and halogen lights are standard. LED lights are available.

UNIVERSAL INSERTS

We have specialized in the manufacturing of unique, concealed wood hood blower inserts for over 30 years. Our Universal Inserts are manufactured utilizing our super quiet internal fan installed or for use with a remote fan. Many units are available from stock in over 70 various sizes for wall or ceiling mounted installations. Or, you can have the insert made to your specific requirements with or without liners and switches. Patented "MICRO" baffle filters and halogen lights are standard. Special services include installation if you ship your wood hood to our plant. Our Universal Inserts are easy to clean and come with a lifetime limited warranty.



FINISHES

Design Excellence along with Superior Craftsmanship is what separates RangeCraft Range Hoods from all the other brands. RangeCraft offers a wide selection of metals and finishes to make each and every hood unique. Our most popular choices — copper, brass and stainless steel — are standard. However, we can customize variations of these metals to complement your particular design. Decorative color matching is another option... just give us a color sample to match your kitchen design. Create that "Old World" look and feel with hammered copper featuring decorative rivets and bands. Or, mix and match different metals to create a look that is truly custom.



Mirror Copper



Mirror Brass



Antique Brass



Non Directional Stainless Steel



Antique Hammered Copper



Antique Copper



Brushed Stainless Steel



Non Directional Copper



Mirror Hammered Copper

Due to variations in printing, color samples shown cannot guarantee exact color match.

RangeCraft



President
Dorota Goetz



Vice President
Ramona Panus

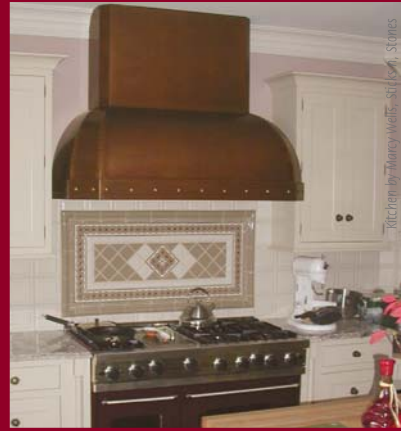
RangeCraft Manufacturing is well known by discerning buyers for its popular product line of Made-To-Order range hoods. Skilled artisans, trained by Master Coppersmith, Helmut Goetz, create every custom designed range hood, one at a time. Helmut Goetz, RangeCraft founder, spent three decades working exclusively on range hoods in Germany, then operated a successful business in Australia before bringing his expertise to America in 1990.

Superior craftsmanship and attention to detail in areas such as welding, rivets, bands, tight joints and rounded corners, have created the strong "top of the line" reputation that separates RangeCraft from the competition.

RangeCraft Range Hoods are Proudly Made in the USA under the management of Dorota Goetz, President and Vice President Ramona Panus.

Setting A New Standard In Custom Hoods

www.rangecraft.com



COPPER · BRASS · STAINLESS STEEL
DECORATOR COLORS

RangeCraft

QUALITY HAND CRAFTED IN THE USA

4-40 BANTA PLACE · FAIR LAWN, NJ 07410 · USA

PHONE: 201-791-0440 FAX: 201-791-4494

877-RCHOODS

www.rangecraft.com