

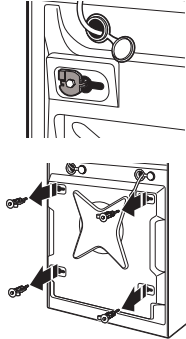
Quick Start Guide

Setting Up and Using Your High-Efficiency Commercial Stacked Washer/Dryer

REMOVING SHIPPING BOLTS

Position the washer/dryer so that the rear is within approximately 3 feet (900 mm) of its final location.

Keep the washer/dryer in the upright position; using a 1/2" wrench, loosen each of the four shipping bolts on the rear panel. Once each bolt is loose, move it to the center of the hole and completely pull out the bolt, including the plastic spacer. Discard the bolts and spacers. Close the bolt holes with the four transport bolt hole plugs.



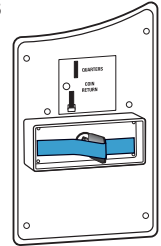
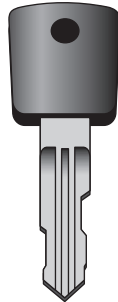
KEY AND COIN BOX*

LOCATION OF KEY

Coin box key (shown) comes taped to coin box lock.

Document the key code (engraved on coin box key) in a safe place.

If key is lost, contact 1-800-221-0982 x200 or x154 for replacement (not covered by warranty). Have key code handy; otherwise, a locksmith will have to drill out coin box and a replacement coin box (part no. W11190039) will have to be installed.

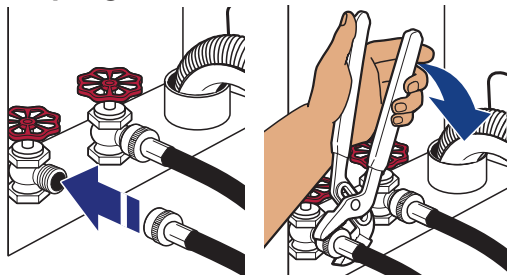


*Applies only to select models.

CONNECTING WATER/SECURING DRAIN HOSE

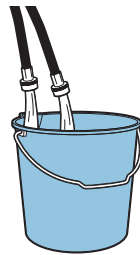
1 CONNECT NEW INLET HOSES TO FAUCETS

Insert new hose washers (in separate bag) into each end of inlet hoses. Firmly seat washers into couplings.



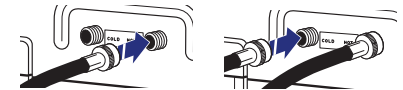
Do not overtighten or use tape or sealants when attaching to faucets.

2 CLEAR WATER LINES



Make sure that both hot and cold water hoses are connected to the correct faucets. The washer will not operate unless both hoses are connected.

3 CONNECT INLET HOSES TO WASHER AND CHECK FOR LEAKS



Do not overtighten or use tape or sealants when attaching to washer.

Turn on faucets and check for leaks at both ends of hoses.

4 **IMPORTANT:** Make sure that water faucets are turned on fully before using the washer for the first time.

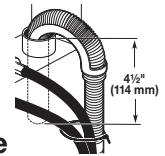
If there is no/low water pressure to the washer, the display will scroll "lo h2O". To clear, open and close the washer door.

lo h2O

and/or

F20

5 Install and secure the drain hose in a manner that will avoid it coming out of or leaking from the plumbing/drain. Do not seal or put more than 4.5" (114 mm) of the drain hose into drainpipe or standpipe.



Make sure that the washer/dryer is level (see the "Leveling Stacked Washer/Dryer" section in the Installation Instructions). Run a wash cycle to verify that the washer is working correctly and has no leaks at faucets and inlet hoses.



Quick Start Guide

SETTING UP THE WASHER/DRYER

⚠ WARNING



Fire Hazard

Never place items in the washer that are dampened with gasoline or other flammable fluids.

No washer can completely remove oil.

Do not dry anything that has ever had any type of oil on it (including cooking oils).

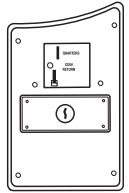
Doing so can result in death, explosion, or fire.

Plug in washer/dryer or connect power. "SYNC" will be displayed for less than 1 minute.

CHANGING COIN DROP PRICING (Applies only to select models)

Refer to Installation Instructions for detailed instructions located in the washer/dryer.

NOTE: Coin box needs to be emptied frequently to avoid jams and damage.



For coin drop use, match the wash price on the display to the number of coin 1s for Regular cycle price and the Value of coin 1.

Wash price

Regular cycle price
(number of coin 1s)

Value of coin 1
(number of nickels)

See the Installation Instructions for programming details.

For a suggested setup, see the "User & Set-Up Instructions" section of the Installation Instructions.

NOTE: To minimize the potential of oversudsing, follow this recommended setup:

- Add a two-minute prewash length (see the "User & Set-Up Instructions" section of the Installation Instructions).

IMPORTANT WASH TIPS

- Shake out clothing prior to loading.
- Zip all zippers.
- Use the recommended amount of HE detergent.
- If a detergent pod is used, toss it into the wash drum, not into the dispenser.

- Use chlorine bleach only.
- Fabric softener must be diluted.

NOTE: The washer remains locked for the entire wash cycle.

