



**Model 700TR  
Integrated All Refrigerator**

Integrated refrigeration can be used anywhere in the home. It merges seamlessly into the décor, with no visible hinges or grilles. Model 700TR is a 27" wide tall unit with refrigerator storage in the upper cabinet, and also in the lower drawers with a crisper cover standard in the upper drawer. Two distinct temperature zones ensure the freshest food and energy efficiency.



**Features**

- Integrated design blends invisibly into custom cabinetry
- Dual refrigeration system
- Microprocessor offers precise temperature control
- Electronic digital controls
- Flat-to-the-ceiling bright interior lighting
- Adjustable, spill-proof glass shelves and adjustable door shelves
- Refrigerator deli drawer for storage of smaller items
- Removable, clear-view crisper cover can be used in either drawer
- Door alarm
- Exclusive dual-action hinge with built-in 90° door stop
- Meets strict Department of Energy requirements

**Model**

**700TR**

Design

Integrated

**Stainless Steel Panels**

**Classic**

**Platinum**

**Carbon**

80" Finished Height



84" Finished Height



**Interior Features**

- **Refrigerator**
  - Dual Refrigeration
  - 2 Temperature Zones
  - 3 Adjustable Glass Shelves
  - 1 Stationary Shelf
  - 2 Storage Drawers
  - Removable Crisper Cover
  - 2 Removable Drawer Dividers
  - Adjustable Deli Drawer
  - 3 Adjustable Door Shelves
  - Adjustable Dairy Compartment
  - Egg Container

**Accessories**

- Stainless steel door and drawer panels with tubular handles available in three finishes (see chart above for specifics)
- Polished chrome handles for custom panel applications
- Crisper cover with lid
- Dozen egg container with lid
- Dual installation heater kit

*Accessories are available through your Sub-Zero dealer. To obtain local dealer information, visit the Showroom Locator section of our website, [subzero.com](http://subzero.com).*

**K** With the installation of a harness kit, this appliance is certified by Star-K to meet strict religious regulations in conjunction with specific instructions found on [www.star-k.org](http://www.star-k.org).



Classic



Platinum

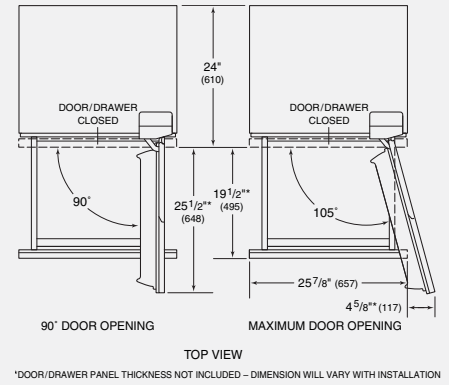
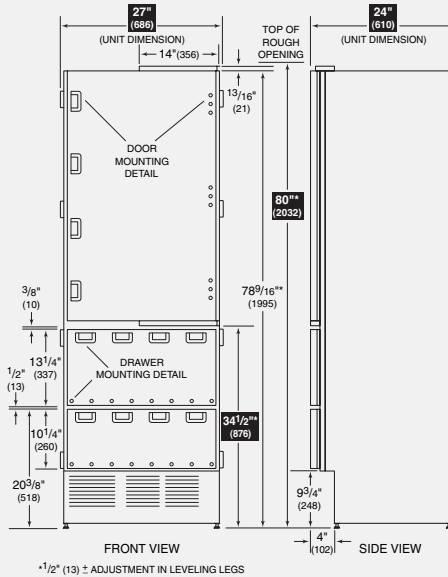


Carbon



**Model 700TR  
Integrated All Refrigerator**

**Overall Dimensions**



Unit dimensions may vary by ±1/8".

**Specifications**

Overall Width	27"
Overall Height	80"
Overall Depth	24"
Door Clearance	25 1/2"
Drawer Clearance	19 1/2"
Refrigerator Capacity	15.5 cu ft
Opening Width	27"
Opening Height	80"
Opening Depth	25**
Electrical Requirements	115 V AC, 60 Hz 15 amp dedicated circuit
Annual Energy Usage	\$39**
Shipping Weight	360 lbs

\*Depth is 24" from the front of the unit to its back. Your design may necessitate moving the unit back, or cabinets forward to achieve a flush fit. This will require a minimum opening depth of 25".

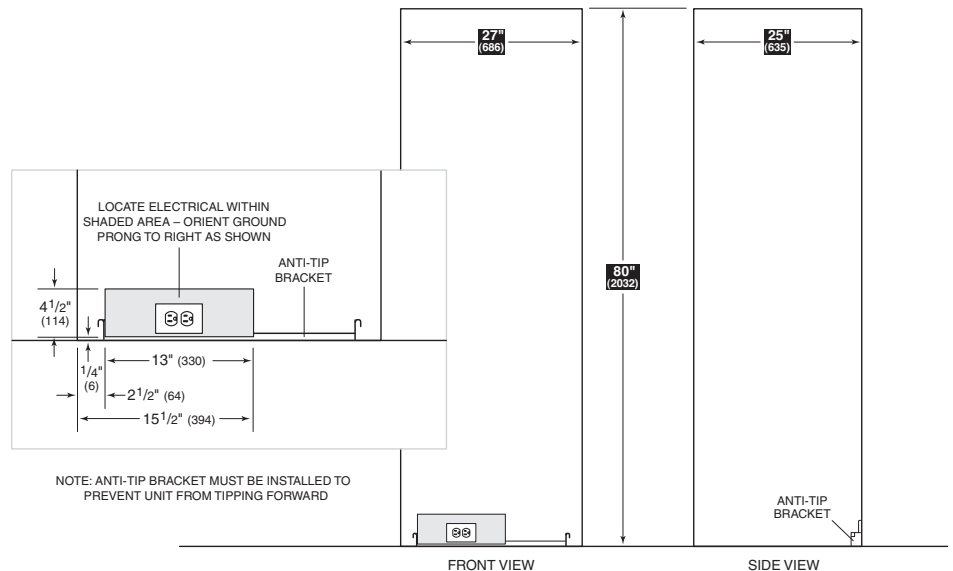
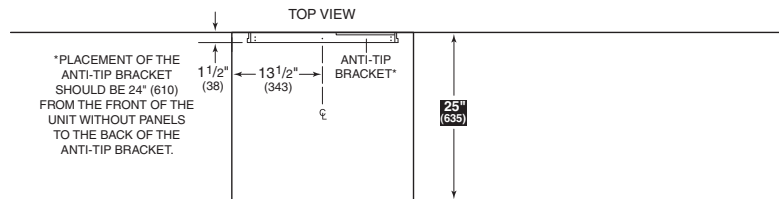
\*\*Based on 9.06 cents per kilowatt hour.

**Installation Notes**

Stainless steel panels with handles are available as accessories. Panels for an 80" finished height are offered in classic, platinum and carbon finishes. Panels for an 84" finished height come in the classic finish only. These panels are not installed at the factory.

Complete installation specifications, including panel sizes, can be found on our website, subzero.com.

**Installation Specifications**



Dimensions in parentheses are in millimeters unless otherwise specified.