



Model 427 Wine Storage

Better wine storage conditions for the bottle ultimately means better enjoyment in the glass. Model 427 has a wine storage capacity of 132 (750 ml) bottles. Two independent storage zones maintain the temperature and humidity that wine — and wine lovers — require. The integrated design allows the unit to merge seamlessly into the décor, with no visible hinges or grilles. Accessory panels are available in three stainless steel finishes.



Two Model 427G units shown installed side by side.

Features

- Integrated design blends invisibly into custom cabinetry
- Standard full-view glass door with UV protection—solid door and high altitude glass door model options available
- Two independent temperature zones with ideal humidity
- Sturdy, rustproof wire shelves accommodate standard 750 ml bottles, half-bottles, as well as magnums
- Five top-zone standard shelves with 45 (750 ml) bottle capacity
- Nine bottom-zone standard shelves with 81 (750 ml) bottle capacity
- Illuminated display shelf holds 750 ml bottles or magnums
- Discreet low voltage interior lighting
- Optional lock and tie-in to home security system

Model Options

Glass Door (standard)	427G
Solid Door	427S
High Altitude Glass Door	427HAG

Accessories

- Stainless steel panels with handles for glass or solid door models with an 80" finished height (classic, platinum and carbon)
- Stainless steel panels with handles for glass or solid door models with an 84" finished height (classic only)
- Stainless steel (classic, platinum and carbon) tubular handles for custom panel applications
- Polished chrome handle for custom panel applications
- Dual installation heater kit
- UL approved lock

Enemies of Wine

Heat – Two independent storage zones can be set in a range of 38°F to 65°F, with one-degree digital accuracy.

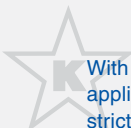
Light – UV resistant bronze tinted glass shields wines from harmful rays.

Humidity – Dual evaporators, one for each storage zone, maintain steady, moderate humidity.

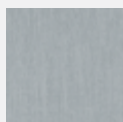
Vibration – Sub-Zero's quiet compressor lets wines rest undisturbed. Shelves glide out smoothly, providing access without agitating the wine.

For additional information on the Enemies of Wine, visit www.subzerowine.com.

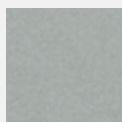
Accessories are available through your Sub-Zero dealer. To obtain local dealer information, visit the Locator section of our website, subzero.com.



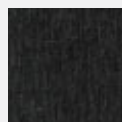
With the installation of a harness kit, this appliance is certified by Star-K to meet strict religious regulations in conjunction with specific instructions found on www.star-k.org.



Classic



Platinum

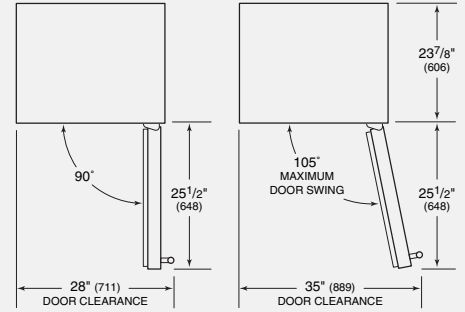
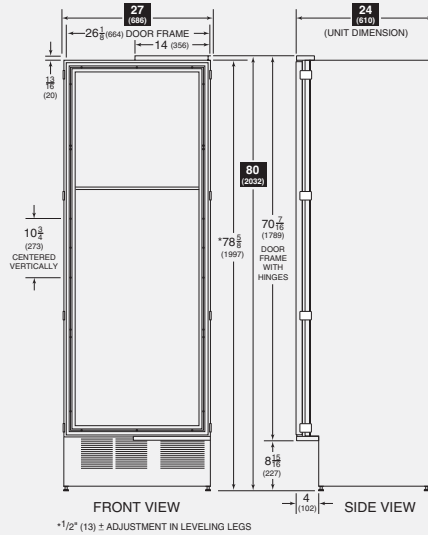


Carbon



**Model 427
Wine Storage**

Overall Dimensions



Unit dimensions may vary by ±1/8".

Specifications

Overall Width	27"
Overall Height	80"
Overall Depth	24"
Door Clearance	25 1/2"
Wine Storage Capacity	132 bottles*
Opening Width	27"
Opening Height	80"
Opening Depth	25"***
Electrical Requirements	115 V AC, 60 Hz 15 amp dedicated circuit
Shipping Weight	Glass Door – 395 lbs Solid Door – 386 lbs

*750 ml bottles.

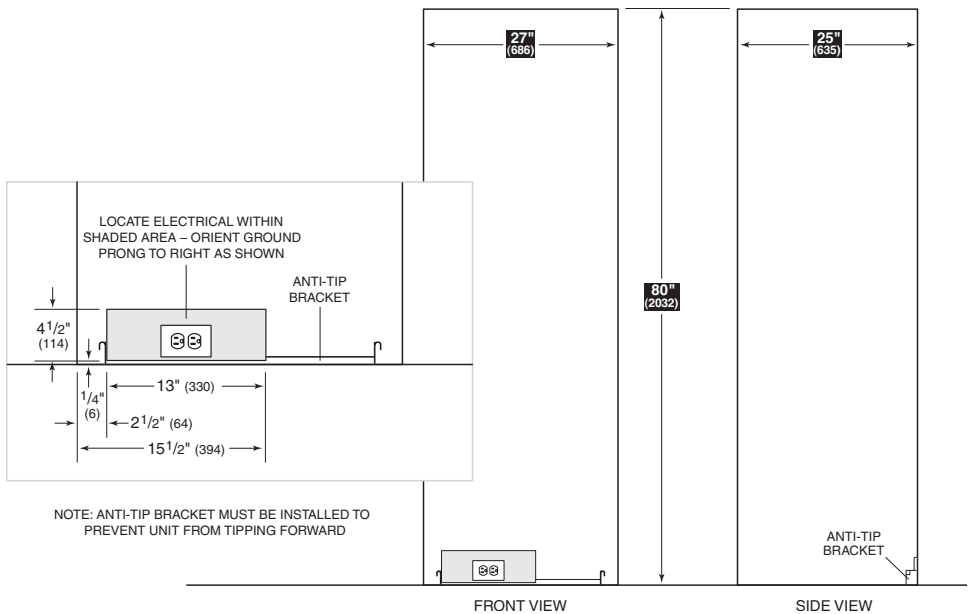
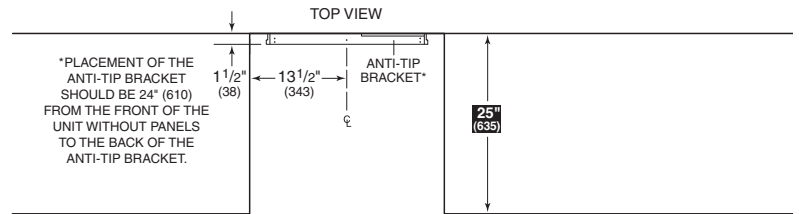
***Depth is 24" from the front of the unit to its back. Your design may necessitate moving the unit back, or cabinets forward to achieve a flush fit. This will require a minimum opening depth of 25".

Installation Notes

Stainless steel panels with handles are available as accessories. Panels for an 80" finished height are offered in classic, platinum and carbon finishes. Panels for an 84" finished height come in the classic finish only. Panels can be ordered to include a lock. These panels are not installed at the factory.

Complete installation specifications, including panel sizes, can be found on our website, subzero.com.

Installation Specifications



Dimensions in parentheses are in millimeters unless otherwise specified.