



Connect your appliance to the future

Installation guide

home
connect

Welcome to the connected home!

Congratulations on your new smart appliance with Home Connect, designed to simplify your life and make it more enjoyable.*

Home Connect helps you to manage your home appliances with ease and comfort, providing a variety of functions beyond simple remote control.

The Home Connect app gives you important and useful information about your home appliance, allowing you to customize and trigger certain functionalities and actions. Furthermore, the app offers support on how to properly maintain your home appliance and also inspires with a variety of recipes. Explore our ecosystem of partners and gain even more functionalities and services.

Home Connect opens up a world of possibilities exceeding your expectations of a home appliance.

* The availability of the Home Connect function depends on the availability of Home Connect services in your country. Home Connect services are not available in every country. You can find more information on this at www.home-connect.com

Explore: With the Home Connect app you can...



Manage your appliance

In the app's appliance section you have an overview of your connected home appliances, offering a variety of functions beyond simple remote control. Monitor the home appliance's progress, change or pause programs, change settings, trigger actions, and receive notifications.



Be inspired

The recipe section provides a variety of inspiring recipes, tips and videos, that will make cooking and baking even more enjoyable.



Get support

The service section gives helpful information on how to maintain and operate your home appliance properly.



Discover even more benefits

We are constantly expanding our ecosystems of partners. Please refer to www.home-connect.com for an overview of all partners.

Let's get started: What you need

- 1 | Your appliance must be installed properly and plugged in.
- 2 | A smartphone or tablet equipped with a current version of iOS or Android operating system.
- 3 | Your appliance within the Wi-Fi signal of your home network.
- 4 | The name of your Wi-Fi network (SSID) and its password (key).
- 5 | This installation guide.

Important information:

Data security: Home Connect values customer data, ensuring the transfer of data is encrypted. Home Connect utilizes a variety of security measures, which are periodically reviewed. For further information visit www.home-connect.com.

Appliance safety: To ensure safe operation of your appliance with Home Connect functionality, please consult the safety information in the appliance instruction manual.

Step 1: Download the Home Connect app and create a user account

- 1 | Open the App Store (Apple devices) or Google Play Store (Android devices) on your smartphone or tablet.
- 2 | Search for the "Home Connect (America)" app in the store's search and install it.

Home Connect app:



- 3 | Open the app and register to create a Home Connect user account.
 - 4 | Write down your Home Connect account credentials (user account and password), you will need them later.
- ✓ The app will guide you through the steps of adding your appliance to Home Connect. It will refer to this guide only when needed.

Step 2: Connect your appliance to your home network

- 1 | Your appliance must be installed properly and plugged in.
- 2 | Open your Home Connect app to add your appliance.
- 3 | Please follow the directions in the app and refer to this guide only when prompted to by the app.

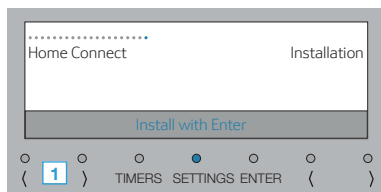
Information:

We are constantly working to improve the Home Connect app, which may lead to differences in the setup steps. Please rely on the instructions in the latest version of the Home Connect app to guide you through the setup process.

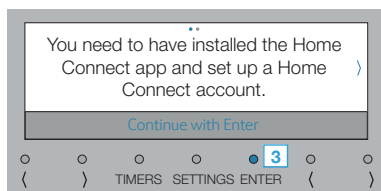
Step 2.1: Connect your appliance to your home network with WPS

Please enter step 2.1 only when prompted to by the app. The following steps describe operations at the home appliance itself.

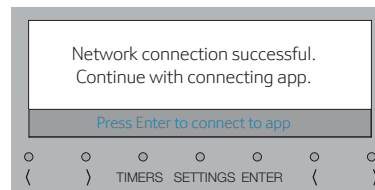
- 1 | Press the **Settings** button on your appliance and use the (< or >) button to navigate to **Home Connect**.



- 2 | Press **Enter** to continue.
- 3 | Press **Enter** to confirm the precondition.



- 4 | Activate the WPS function on your home network router within the next 2 minutes.
 - ✓ The following message appears in the display of your appliance: **Network connection successful. Continue with connecting to app.**



- ✓ The app will get notified once your appliance has been successfully connected to your Wi-Fi network.
- 5 | Press **Enter** to continue.
 - 6 | Follow the instructions in the app.

Information:

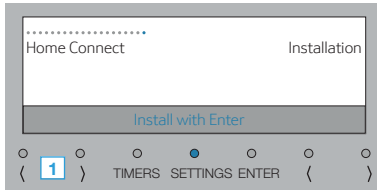
If the connection could not be established within 2 minutes, make sure your appliance is within the range of your Wi-Fi network.

For some appliances the WPS mode is also called "automatic mode".

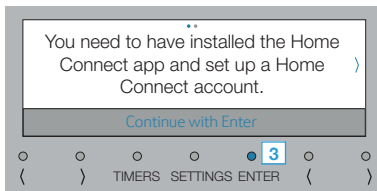
Step 2.2: Connect your appliance to your home network step by step

Please enter step 2.2 only when prompted to by the app. The following steps describe operations at the home appliance itself.

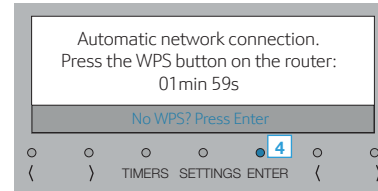
- 1 | Press the **Settings** button on your appliance and use the (>) button to navigate to **Home Connect**.



- 2 | Press **Enter** to continue.
- 3 | Press **Enter** to confirm the precondition.



- 4 | Press **Enter** to start manual network connection.



- ✓ The following message appears in the display of your appliance: **Manual network connection. Have your mobile device ready and open the network settings.**

- 5 | Press **Enter** to continue.

- ✓ The appliance will open a temporary Wi-Fi network "HomeConnect" with the password "HomeConnect" for 5 minutes.

The app provides your home Wi-Fi network name (SSID) and its password via this temporary Wi-Fi network to the appliance enabling the appliance to connect to your home Wi-Fi network.

- 6 | Follow the instructions in the app.

Information:

For some appliances the step-by-step mode is also called "SAP mode" or "manual mode". If the step-by-step mode does not work please check:

- Your appliance is in the range of the Wi-Fi network.
- Your smartphone/tablet is connected to your home Wi-Fi network.
- Your smartphone/tablet and appliance are connected to the same home Wi-Fi network.

Step 3: Connect your appliance to the Home Connect app

Please enter step 3 only when prompted to by the app. The following steps describe operations at the home appliance itself.

- 1 |** Launch the Home Connect app on your mobile device and follow the instructions in the app.
 - 2 |** Follow the instructions in the app.
- ✓ The login process is complete once **Pairing successful** is shown in the appliance display.

Information

If the connection could not be established make sure your smartphone/tablet is within range of your Wi-Fi network.

Home Connect opens up a world of possibilities,
exceeding your expectations of a home appliance.

To learn more about smart home appliances with
Home Connect and our partner ecosystem, visit
www.home-connect.com



If you have any questions, just visit us at
www.home-connect.com.
or call: 1-800-735-4328

Home Connect is a service of BSH Home Appliances Corporation.

Apple App Store and iOS are Apple Inc. trademarks.
Google Play Store and Android are Google Inc. trademarks.
Wi-Fi is a Wi-Fi Alliance trademark.

