

# P195P

## Power Pack with electronic controls

HVI certified performance

Heat Sentry™ detects excessive heat and adjusts speed to high automatically

10 minute delay-off feature turns the hood off automatically

30-hour filter clean indicator

Recirculation kit available for the P195P1 for non-ducted operation

Smooth stainless steel panel conceals aluminum mesh filters and enables increased flow around the perimeter for superior capture



Perimeter aspiration maximizes flow at the hood edges. It provides a clean, filterless look that is as pleasurable to admire as it is to work beneath.

Shown with custom protective cabinet panels, purchased locally.

### Hood Sizes

**Width** 21-3/16": P195P1M52SB  
28-5/16": P195P1M70SB, P195P2M70SB

**Depth** 11-1/8"

### Finish

Stocked Brushed Standard Grade Stainless Steel  
Special Order Not Available

### Features

Light Type Halogen 20W, G-4  
Number of Lamps 2  
Lighting Levels 1  
Lighting Lamps Included Yes  
Control Type 4-Speed, Electronic Push-button, Digital Display  
Control Features Heat Sentry™, Delay Off, Filter Clean Indicator  
Filter: Perimeter Aspiration Aluminum Mesh Filters  
Non-ducted Capability Yes (P195P1 Only With Recirculation Filter)

### Blower (Included)

Internal CFM Pro 600™ (P195P1M52, P195P1M70)  
SuperPro 1200™ (P195P2M70)  
Sones Max Hi/Lo 8.5/1.0 (P195P1M52)  
8.0/1.0 (P195P1M70)  
12.0/2.0 (P195P2M70)

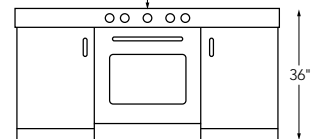
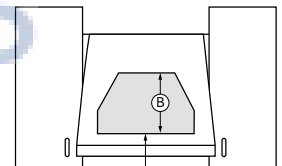
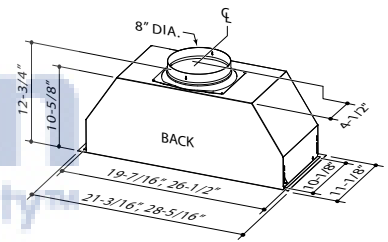


### Accessories

Non-Ducted Recirculation Filters AFCP195P52 / AFCP195P70  
Liners: Optional L5230 / L7036 / L7048  
Make-Up Air Dampers MD6T / MD8T  
Control Remote Optional ACR1

### Installation Requirements

Amps @ 120V 5.4 Amps Max  
Electrical Direct Wire  
Duct Size: Internal Blower 8" Round Only  
Duct Size: External Blower Not Available  
Duct Direction Vertical  
Backdraft Damper Included



A. Installation height above the cooking surface 24–30"

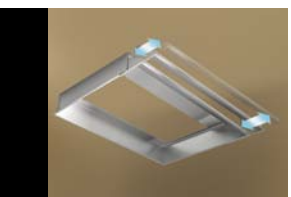
B. Distance from bottom of range hood to top of hood 10-5/8"



Powerful perimeter aspiration effectively removes heat, moisture and cooking aromas.



Variable 4-Speed Electronic push-button control enables the user to choose operating preference.



Protect cabinetry from steam and grease with stainless steel liners that provide a custom fit.

