

LIEBHERR WINE STORAGE

Flexible (Built-In) Wine Storage Options

LIEBHERR

Will my bottle fit? Yes it will!



1

Upper zone, distance between air duct to wooden board as well as lower zone, distance between control panel and wooden board, max. bottle diameter = 3 1/8 inches (80mm)

2

Distance between wooden boards with single layer loading, HW* 3* & HW* 4* & HW* 5* max. bottle diameter = 3 13/16 inches (97mm)
HW* 8* max bottle diameter = 3 1/4 inches (83mm)

3

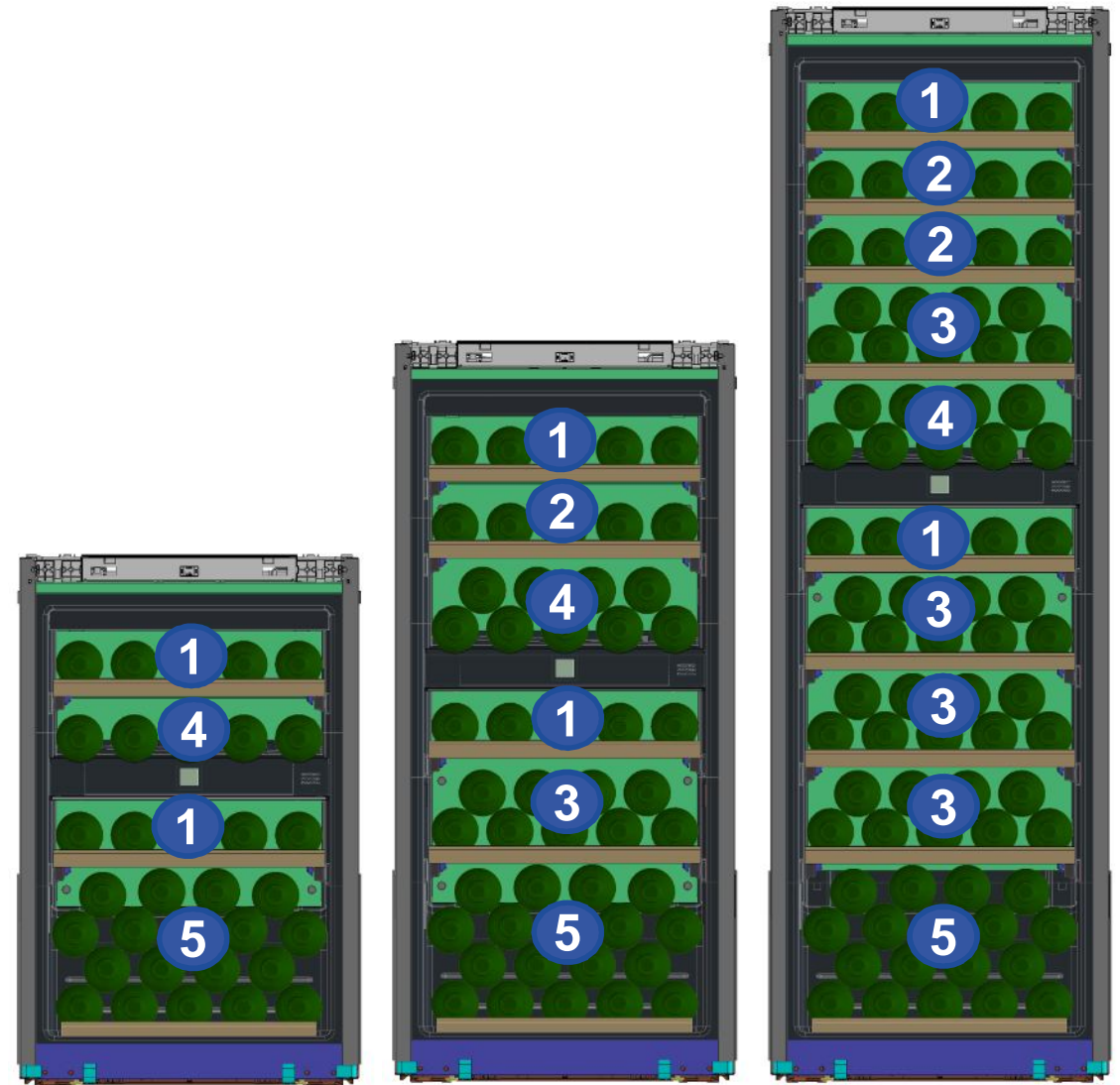
Distance between wooden boards with double layer loading, max. bottle diameter / distance = 5 11/16 inches (145mm)

4

Upper zone, distance between control panel and wooden board:
EWT 16: 3 15/16 inches (100mm)
EWT 23: 5 13/16 inches (148mm)
EWT 35: 5 1/2 inches (140mm)

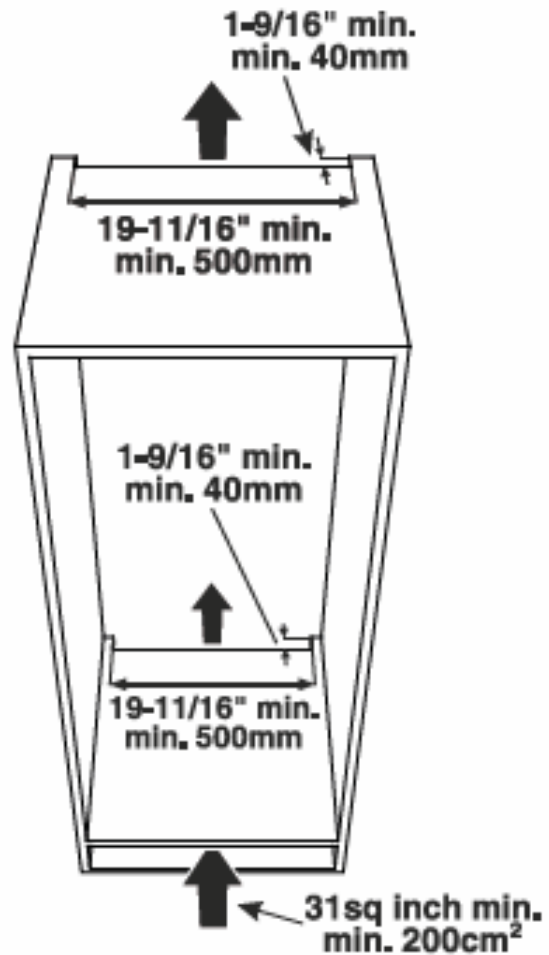
5

Bottom area: restriction in standing up position: HWgb/ gw max. 12 in. (305mm)/ HW max. 11 1/16 in. (282mm)



Venting requirements

Appliance Venting

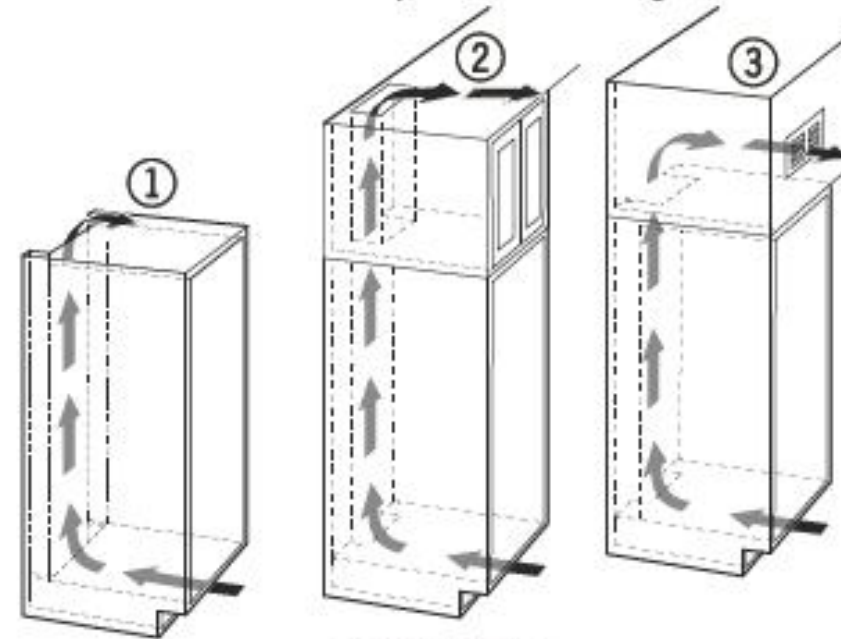


IMPORTANT

The clear ventilation cross section must be at least 31 sq inches from the lower to the top opening.

Types of air outlet

- ① Directly above the appliance
- ② Above the top unit
- ③ From the front of the top unit with decor grille



IMPORTANT

When using decor grills, the sum of the individual openings must total a minimum of 31 square inches. A cut-out section of 31 square inches (200 cm²) for installing the ventilation grille is thus not sufficient.

Full line



- All models required to be installed in enclosed cabinet with an additional 4" toe kick base for ventilation.
- All models are 21 15/16" width, resulting in a 24" niche when encompassing in the cabinet.
- All models are 21 5/6" depth, resulting in a 24" niche when encompassing in the cabinet



Liebherr

Quality, Design and Innovation

home.liebherr.com