

# Room Air Conditioner

## **SVC MANUAL(Exploded View)**

**MODEL : AMNW07GDJB0 (LMN079HVT)  
S4NW09JL1DA (LSN090HSV5)  
S4NW12JL1DA (LSN120HSV5)  
AMNW15GDJB0 (LMN159HVT)  
S4NW18KP1DA (LSN180HSV5)  
AMNW24GDKB0(LMN249HVT)  
S4NW09JLRDA (LAN090HSV5)  
S4NW12JLRDA (LAN120HSV5)  
S4NW18KPRDA (LAN180HSV5)**

### **CAUTION**

Before Servicing the unit, read the safety precautions in General SVC manual.  
Only for authorized service personnel.

# 1. Specification

## Indoor

Model Name			AMNW07GDJB0 (LMN079HVT)	S4NW09JL1DA (LSN090HSV5)	S4NW12JL1DA (LSN120HSV5)	AMNW15GDJB0 (LMN159HVT)	S4NW18KP1DA (LSN180HSV5)	AMNW24GDKB0 (LMN249HVT)	
Power Supply		V / Ø / Hz	208/230,1,60	208/230,1,60	208/230,1,60	208/230,1,60	208/230,1,60	208/230,1,60	
Capacity	Cooling	kW	2.1	2.6	3.5	4.2	5.3	7.0	
		Btu/h	7,000	9,000	12,000	14,300	18,000	24,000	
	Heating	kW	2.4	3.2	4.0	4.6	6.3	7.5	
		Btu/h	8,100	10,900	13,600	15,600	21,600	25,600	
Power Input	Max.	W	30	30	30	30	60	60	
Running Current	Max.	A	0.4	0.4	0.4	0.4	0.4	0.4	
Casing Color		-	Munsell 7.5BG 10/2 (RAL 9016)	Munsell 7.5BG 10/2 (RAL 9016)	Munsell 7.5BG 10/2 (RAL 9016)	Munsell 7.5BG 10/2 (RAL 9016)	Munsell 7.5BG 10/2 (RAL 9016)	Munsell 7.5BG 10/2 (RAL 9016)	
Dimensions	Body	W x H x D	mm	837 x 308 x 189	837 x 308 x 189	837 x 308 x 189	837 x 308 x 189	998 x 345 x 210	998 x 345 x 210
		W x H x D	inch	32-15/16 x 12-1/8 x 7-7/16	32-15/16 x 12-1/8 x 7-7/16	32-15/16 x 12-1/8 x 7-7/16	32-15/16 x 12-1/8 x 7-7/16	39-9/32 x 13-19/32 x 8-9/32	39-9/32 x 13-19/32 x 8-9/32
	Shipping	W x H x D	mm	892 x 381 x 249	892 x 381 x 249	892 x 381 x 249	892 x 381 x 249	1,063 x 420 x 274	1,063 x 420 x 274
		W x H x D	inch	35-1/8 x 15 x 9-13/16	35-1/8 x 15 x 9-13/16	35-1/8 x 15 x 9-13/16	35-1/8 x 15 x 9-13/16	41-27/32 x 16-17/32 x 10-25/32	41-27/32 x 16-17/32 x 10-25/32
Net Weight	Body	kg (lbs)	8.3 (18.3)	8.3 (18.3)	8.3 (18.3)	8.3 (18.3)	11.6 (25.6)	11.6 (25.6)	
	Shipping	kg (lbs)	10.6(23.4)	10.6(23.4)	10.6(23.4)	10.6(23.4)	14.6 (32.2)	14.6 (32.2)	
Heat Exchanger	(Row x Column x Fins per nch) x No.	-	(2 x 23 x 22) x 1	(2 x 23 x 22) x 1	(2 x 23 x 22) x 1	(2 x 23 x 22) x 1	(2 x 16 x 20) x 1	(2 x 16 x 20) x 1	
Fan	Type		-	Cross Flow Fan	Cross Flow Fan	Cross Flow Fan	Cross Flow Fan	Cross Flow Fan	
	Air Flow Rate	H / M / L	m <sup>3</sup> /min	7.2 / 5.8 / 4.6	7.6 / 6.2 / 4.8	8.0 / 6.6 / 5.0	8.9 / 7.6 / 5.2	15.8 / 12.4 / 10.0	16.9 / 12.8 / 10.4
		H / M / L	ft <sup>3</sup> /min	254 / 204 / 148	268 / 218 / 169	282 / 233 / 177	314 / 268 / 184	558 / 438 / 353	597 / 452 / 367
Fan Motor	Type		-	BLDC	BLDC	BLDC	BLDC	BLDC	
	Output		W x No.	30 x 1	30 x 1	30 x 1	30 x 1	60 x 1	60 x 1
Sound Pressure Level	H / M / L	dB(A)	35 / 31 / 26	36 / 32 / 27	38 / 34 / 29	42 / 38 / 32	44 / 38 / 34	46 / 41 / 36	
Piping Connections	Liquid		mm(inch)	Ø 6.35 (1/4)	Ø 6.35 (1/4)	Ø 6.35 (1/4)	Ø 6.35 (1/4)	Ø 6.35 (1/4)	
	Gas		mm(inch)	Ø 9.52 (3/8)	Ø 9.52 (3/8)	Ø 9.52 (3/8)	Ø 9.52 (3/8)	Ø 12.7 (1/2)	
	Drain	(O.D. / I.D.)	mm	21.5 / 16.0	21.5 / 16.0	21.5 / 16.0	21.5 / 16.0	21.5 / 16.0	
Safety Devices		-	Fuse	Fuse	Fuse	Fuse	Fuse	Fuse	
		-	Thermal Preotector for Fan Motor	Thermal Preotector for Fan Motor	Thermal Preotector for Fan Motor	Thermal Preotector for Fan Motor	Thermal Preotector for Fan Motor	Thermal Preotector for Fan Motor	
Connective Method		-	Flared	Flared	Flared	Flared	Flared	Flared	
Power and Communication Cable (included Earth)		No. x mm <sup>2</sup> (AWG)	4C x 1.0 (18)	4C x 1.0 (18)	4C x 1.0 (18)	4C x 1.0 (18)	4C x 1.0 (18)	4C x 1.0 (18)	

### Note:

- Capacities are based on the following conditions:  
Cooling: - Indoor Temperature 27°C(80.6°F) DB/19°C(66.2°F) WB  
- Outdoor Temperature 35°C(95°F) DB/24°C(75.2°F) WB  
Heating: - Indoor Temperature 20°C(68°F) DB/15°C(59°F) WB  
- Outdoor Temperature 7°C(44.6°F) DB/6°C(42.8°F) WB  
Piping Length - Interconnecting Piping Length 7.5m  
- Level Difference of Zero

- Wiring cable size must comply with the applicable local and national code.
- The specification may be subject to change without prior notice for purpose of improvement.

Conversion Formula
kW = Btu/h x 0.0002931
cfm = CMM x 35.3

## Indoor

Model Name			S4NW09JLRDA (LAN090HSV5)	S4NW12JLRDA (LAN120HSV5)	S4NW18KPRDA (LAN180HSV5)	
Power Supply		V / Ø / Hz	208/230,1,60	208/230,1,60	208/230,1,60	
Capacity	Cooling	kW	2.6	3.5	5.3	
		Btu/h	9000	12000	18000	
	Heating	kW	3.2	4.0	6.3	
		Btu/h	10900	13600	21600	
Power Input	Max.	W	30	30	60	
Running Current	Max.	A	0.4	0.4	0.4	
Casing Color		-	Munsell 7.5PB 0.2/20 (RAL 9005)	Munsell 7.5PB 0.2/20 (RAL 9005)	Munsell 7.5PB 0.2/20 (RAL 9005)	
Dimensions	Body	W x H x D	mm	837 x 308 x 192	837 x 308 x 192	998 x 345 x 212
		W x H x D	inch	32-15/16 x 12-1/8 x 7-9/16	32-15/16 x 12-1/8 x 7-9/16	39-9/32 x 13-19/32 x 8-11/32
	Shipping	W x H x D	mm	914 x 388 x 261	914 x 388 x 261	1085 x 427 x 286
		W x H x D	inch	35-31/32 x 15-9/32 x 10-9/32	35-31/32 x 15-9/32 x 10-9/32	42-23/32 x 16-13/16 x 11-1/4
Net Weight	Body		kg (lbs)	9.3 (20.5)	9.3 (20.5)	13.5 (29.8)
	Shipping		kg (lbs)	11.6 (25.6)	11.6 (25.6)	16.5 (36.4)
Heat Exchanger	(Row x Column x Fins per nch) x No.		-	(2 x 23 x 22) x 1	(2 x 23 x 22) x 1	(2 x 16 x 20) x 1
Fan	Type		-	Cross Flow Fan	Cross Flow Fan	Cross Flow Fan
	Air Flow Rate	H / M / L	m <sup>3</sup> /min	7.6 / 6.2 / 4.8	8.0 / 6.6 / 5.0	15.8 / 12.4 / 10.0
		H / M / L	ft <sup>3</sup> /min	268 / 218 / 169	282 / 233 / 177	558 / 438 / 353
Fan Motor	Type		-	BLDC	BLDC	BLDC
	Output		W x No.	30 x 1	30 x 1	60 x 1
Sound Pressure Level		H / M / L	dB(A)	36 / 32 / 27	38 / 34 / 29	44 / 38 / 34
Piping Connections	Liquid		mm(inch)	Ø 6.35 (1/4)	Ø 6.35 (1/4)	Ø 6.35 (1/4)
	Gas		mm(inch)	Ø 9.52 (3/8)	Ø 9.52 (3/8)	Ø 12.7 (1/2)
	Drain	(O.D. / I.D.)	mm	21.5 / 16.0	21.5 / 16.0	21.5 / 16.0
Safety Devices		-	-	Fuse	Fuse	Fuse
		-	-	Thermal Preotector for Fan Motor	Thermal Preotector for Fan Motor	Thermal Preotector for Fan Motor
Connective Method		-	-	Flared	Flared	Flared
Power and Communication Cable (included Earth)		No. x mm <sup>2</sup> (AWG)	-	4C x 1.0 (18)	4C x 1.0 (18)	4C x 1.0 (18)

### Note:

- Capacities are based on the following conditions:  
 Cooling: - Indoor Temperature 27°C(80.6°F) DB/19°C(66.2°F) WB  
 - Outdoor Temperature 35°C(95°F) DB/24°C(75.2°F) WB  
 Heating: - Indoor Temperature 20°C(68°F) DB/15°C(59°F) WB  
 - Outdoor Temperature 7°C(44.6°F) DB/6°C(42.8°F) WB  
 Piping Length - Interconnecting Piping Length 7.5m  
 - Level Difference of Zero

- Wiring cable size must comply with the applicable local and national code.
- The specification may be subject to change without prior notice for purpose of improvement.

Conversion Formula
kW = Btu/h x 0.002931
cfm = CMM x 35.3

## 2. Function

Category	Function	AMNW07GDJB0(LMN079HVT) / S4NW09JL1DA(LSN090HSV5) S4NW12JL1DA(LSN120HSV5) / AMNW15GDJB0(LMN159HVT) S4NW18KP1DA (LSN180HSV5) / AMNW24GDKB0(LMN249HVT) S4NW09JLRDA(LAN090HSV5) / S4NW12JLRDA(LAN120HSV5) S4NW18KPRDA(LAN180HSV5)
Air Flow	Air Supply Outlet	1
	Airflow Direction Control (Left & Right)	5 Steps
	Airflow Direction Control (Up & Down)	6 Steps
	Auto Swing (Left & Right)	O
	Auto Swing (Up & Down)	O
	Fan Speed Steps (Fan / Cool / Heat)	6/6/06
	Natural Wind (Auto Wind)	O
	Jet Cool / Jet Heat (Power Wind)	O / O
Air Purifying	Comfort Air	O
	Prefilter (Washable / Anti-Bacteria)	X
	Deodorizing Filter (Triple)	X
	3M Micro Dust Filter	X
	3M Multi Protection Filter	X
Installation	Plasma Air Purifier(Ionizer)	X
	Drain Pump	X
Reliability	Hot Start	O
	Self Diagnosis	O
	De-ice Control (Defrost)	O
	Dry (Dehumidification) Operation	O
Convenience	Auto Changeover	X
	Auto Operation (Artificial Intelligence)	O
	Auto Cleaning (Coil Dry)	O
	Auto Restart Operation	O
	Child Lock <sup>1</sup>	O
	Forced Operation	O
	Group Control <sup>1</sup>	O
	Sleep Mode	7hr
	Timer 24hr (On/Off)	O
	Timer (Weekly) <sup>1</sup>	O
	Two Thermistor Control <sup>1</sup>	O
	Low Ambient Operation	O
	Overheating Protection	O
	Low Heating	O
	Voice Control	X
	Smart Scan (PIR)	X
	LG AC Tag On (NFC)	X
	Outdoor Silent Mode	X
	Mosquito Away	X
	Smart Diagnosis	O
Indoor Unit Display Type	Number Display	
Indoor Unit Display Light	On/Off	
Energy Display	X	
Energy Saving	Energy Saving	X
	Active Energy Control (Watt Option)	X
	Gen Mode	X
Individual Control	Wired Remote Controller (Premium) <sup>2</sup>	PREMTA000A
	Wired Remote Controller (Standard) <sup>2</sup>	PREMTB10U
	Wired Remote Controller (Simple with Mode Selection) <sup>2</sup>	X
	Wired Remote Controller (Simple without Mode Selection) <sup>2</sup>	X
	Handheld Wireless Controller	(See Remote Controller Section) AKB74955602
CAC Network Function	Setting Temperature Range (Cooling)	18~30 °C
	Setting Temperature Range (Heating)	16~30 °C
	General Central Controller (Non LGAP)	X
	Network Solution (LGAP)	O
	Dry Contact <sup>2</sup>	O
Special Function Kit	PDI (Power Distribution Indicator) <sup>2</sup>	X
	Outdoor Unit PI 485 <sup>2</sup>	PMNFP14A0
	Wi-Fi <sup>2</sup>	O
	Water Level Sensor Connection <sup>2</sup>	O
	Wind Baffle Kit <sup>2</sup>	X
	Sump Heater	X
Others	Aux Heat Relay Kit	O
	Crank Case Heater	X
	Smart Invert Monitoring System (SIMs) <sup>2</sup>	X
	Mode Lock	Heating Only
Others	Temperature Control	Thermistor
	DRED (Demand Response Enabling Device)	X

### Note

O : Applied, X : Not available

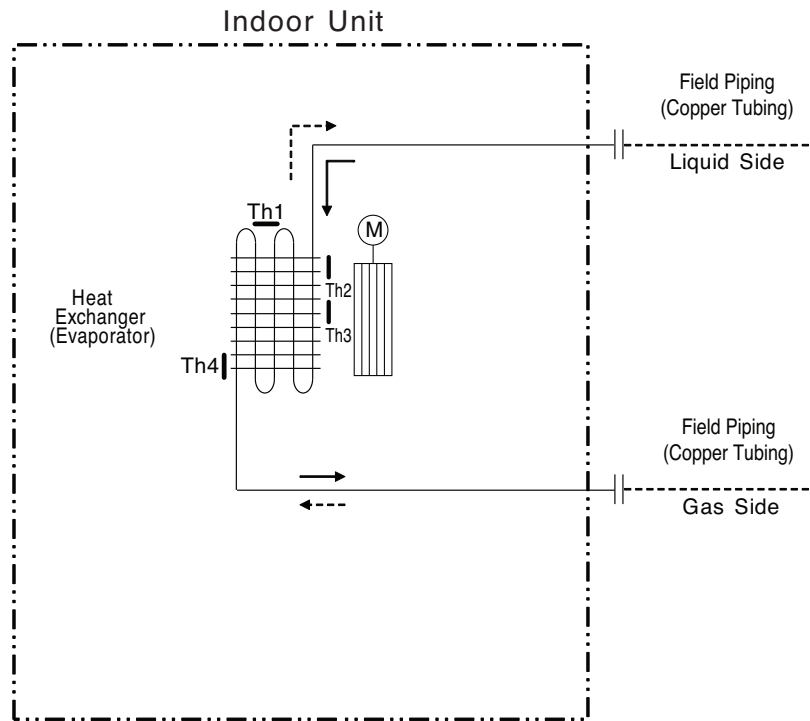
• Filters are optional in some specific areas.

• <sup>1</sup> : This function can be operated only when the wired remote controller is connected. The applicability of each function depends on the above table.

• <sup>2</sup> : Optional accessories must be purchased separately.

### 3. Refrigerant Cycle Diagram

Model : AMNW07GDJB0(LMN079HVT) / S4NW09JL1DA(LSN090HSV5) / S4NW12JL1DA(LSN120HSV5) / AMNW15GDJB0(LMN159HVT) / S4NW18KP1DA (LSN180HSV5) / AMNW24GDKB0(LMN249HVT) / S4NW09JLRDA(LAN090HSV5) / S4NW12JLRDA(LAN120HSV5) / S4NW18KPRDA(LAN180HSV5)



LOC.	Description	PCB Connector
Th1	Thermistor for indoor air temperature	CN-TH1 (Indoor)
Th2	Thermistor for evaporator inlet temperature	
Th3 <sup>1</sup>	Thermistor for evaporator middle temperature	CN-TH3 (Indoor)
Th4	Thermistor for evaporator outlet temperature	CN-TH2 (Indoor)

#### ■ Refrigerant Pipe Connection Port Diameters

Model	Gas		Liquid	
	mm	inch	mm	inch
AMNW07GDJB0(LMN079HVT), S4NW09JL1DA(LSN090HSV5), S4NW12JL1DA(LSN120HSV5), AMNW15GDJB0(LMN159HVT), S4NW09JLRDA(LAN090HSV5), S4NW12JLRDA(LAN120HSV5)	Ø 9.52	Ø 3/8	Ø 6.35	Ø 1/4
S4NW18KP1DA (LSN180HSV5), AMNW24GDKB0(LMN249HVT), S4NW18KPRDA(LAN180HSV5)	Ø 12.7	Ø 1/2	Ø 6.35	Ø 1/4

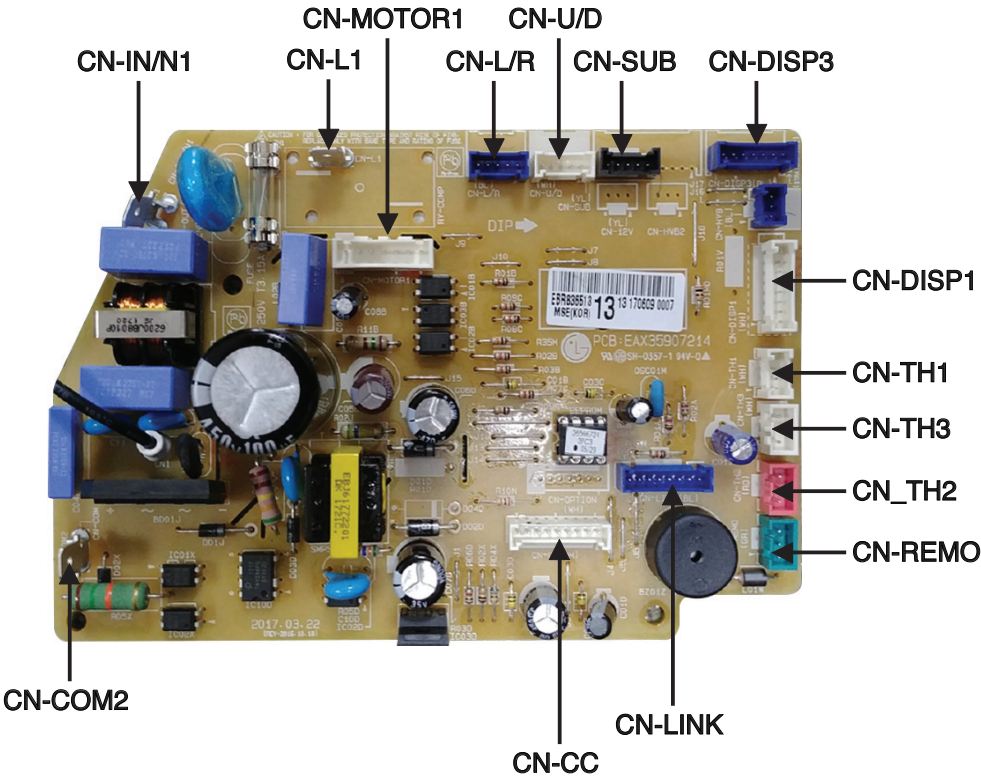
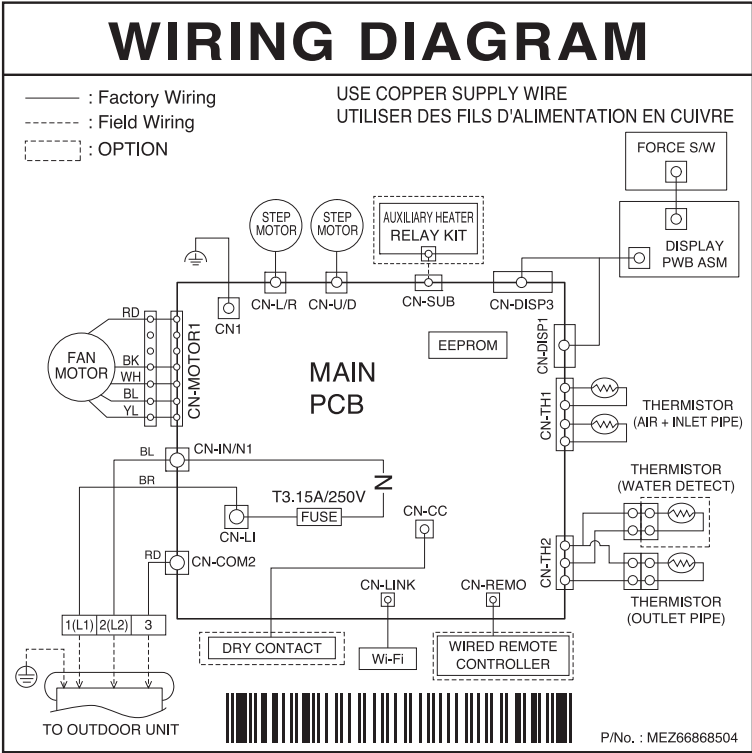
**Note**

\* : AMNW07GDJB0(LMN079HVT),AMNW15GDJB0(LMN159HVT),AMNW24GDKB0(LMN249HVT)  
Models are not Applied Mid-Temperature sensor.

# 4. Wiring Diagrams

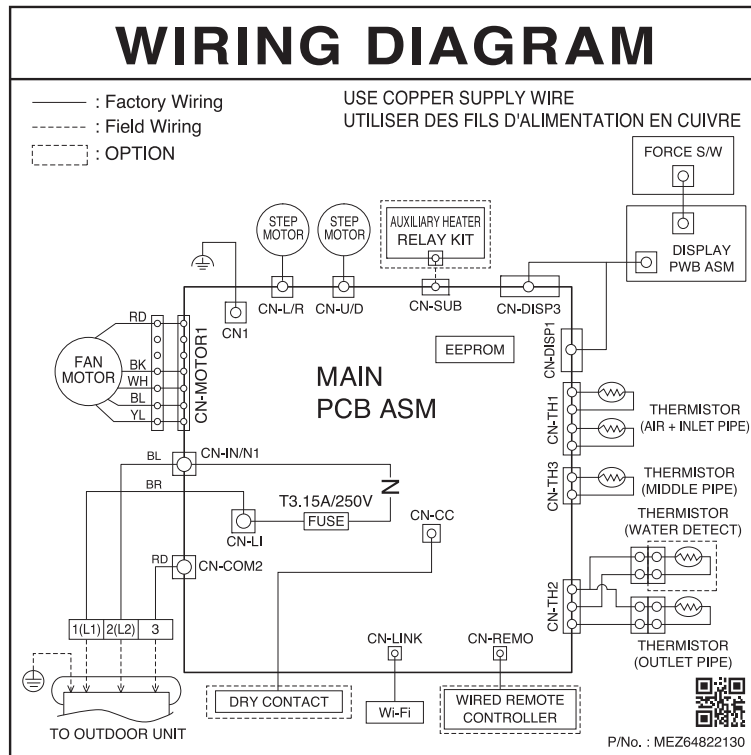
## Indoor Unit

AMNW07GDJB0(LMN079HVT), AMNW15GDJB0(LMN159HVT), AMNW24GDKB0(LMN249HVT)

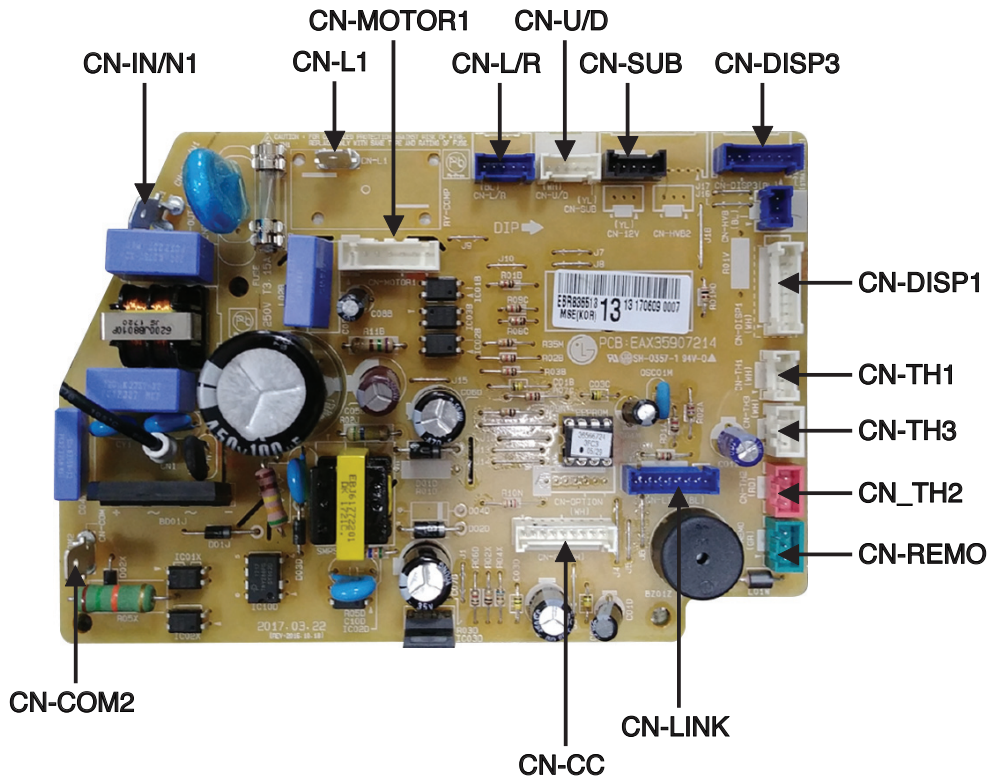


## Indoor Unit

S4NW09JL1DA(LSN090HSV5), S4NW12JL1DA(LSN120HSV5), S4NW18KP1DA(LSN180HSV5),  
S4NW09JLRDA(LAN090HSV5), S4NW12JLRDA(LAN120HSV5), S4NW18KPRDA(LAN180HSV5)

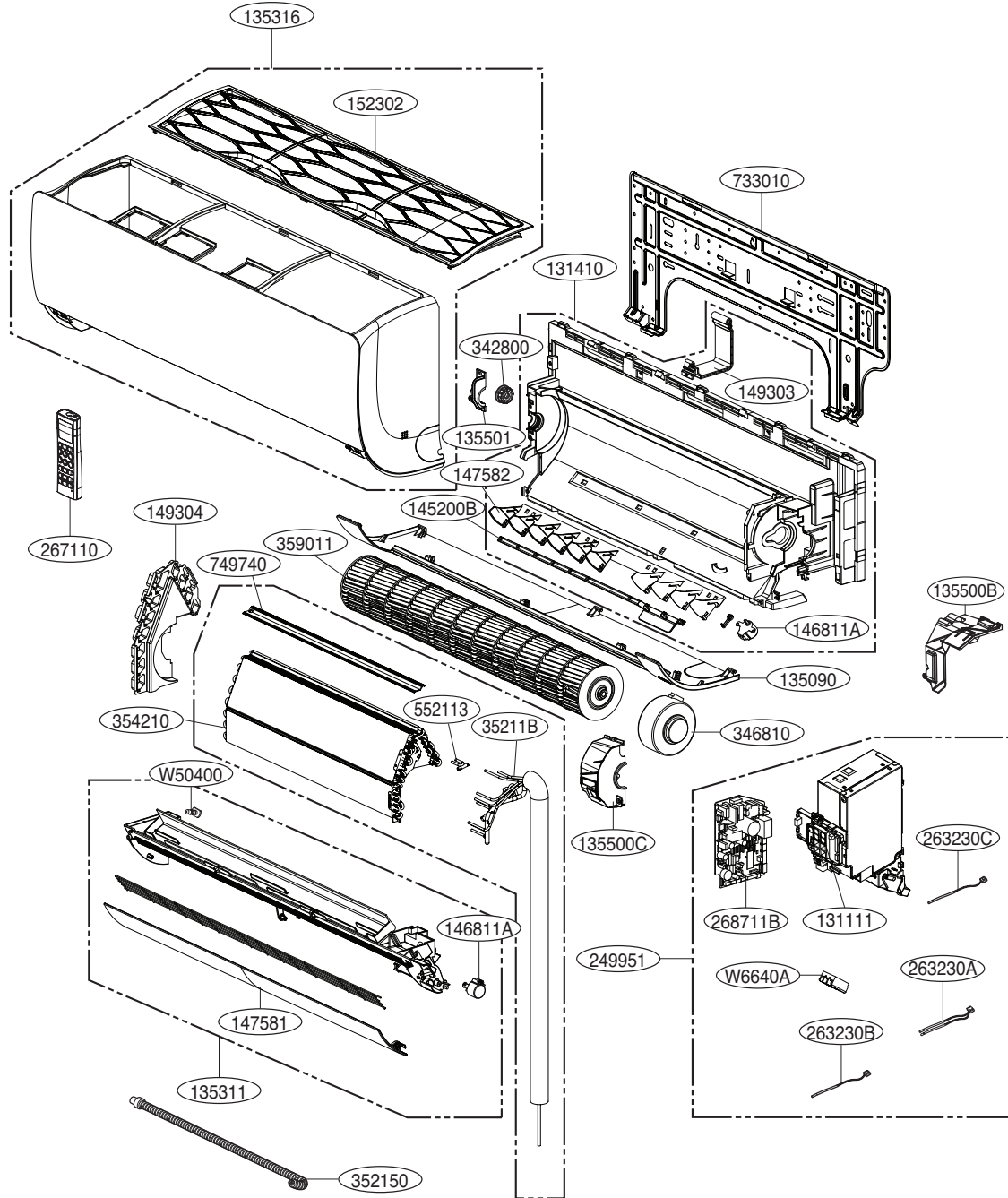


\* Auxiliary heater relay kit is not available on single zone wall mounted models.



## 4. Exploded View

Indoor Unit: AMNW07GDJB0(LMN079HVT), S4NW09JL1DA(LSN090HSV5),  
S4NW12JL1DA(LSN120HSV5), AMNW15GDJB0(LMN159HVT),  
S4NW09JLRDA(LAN090HSV5), S4NW12JLRDA(LAN120HSV5)

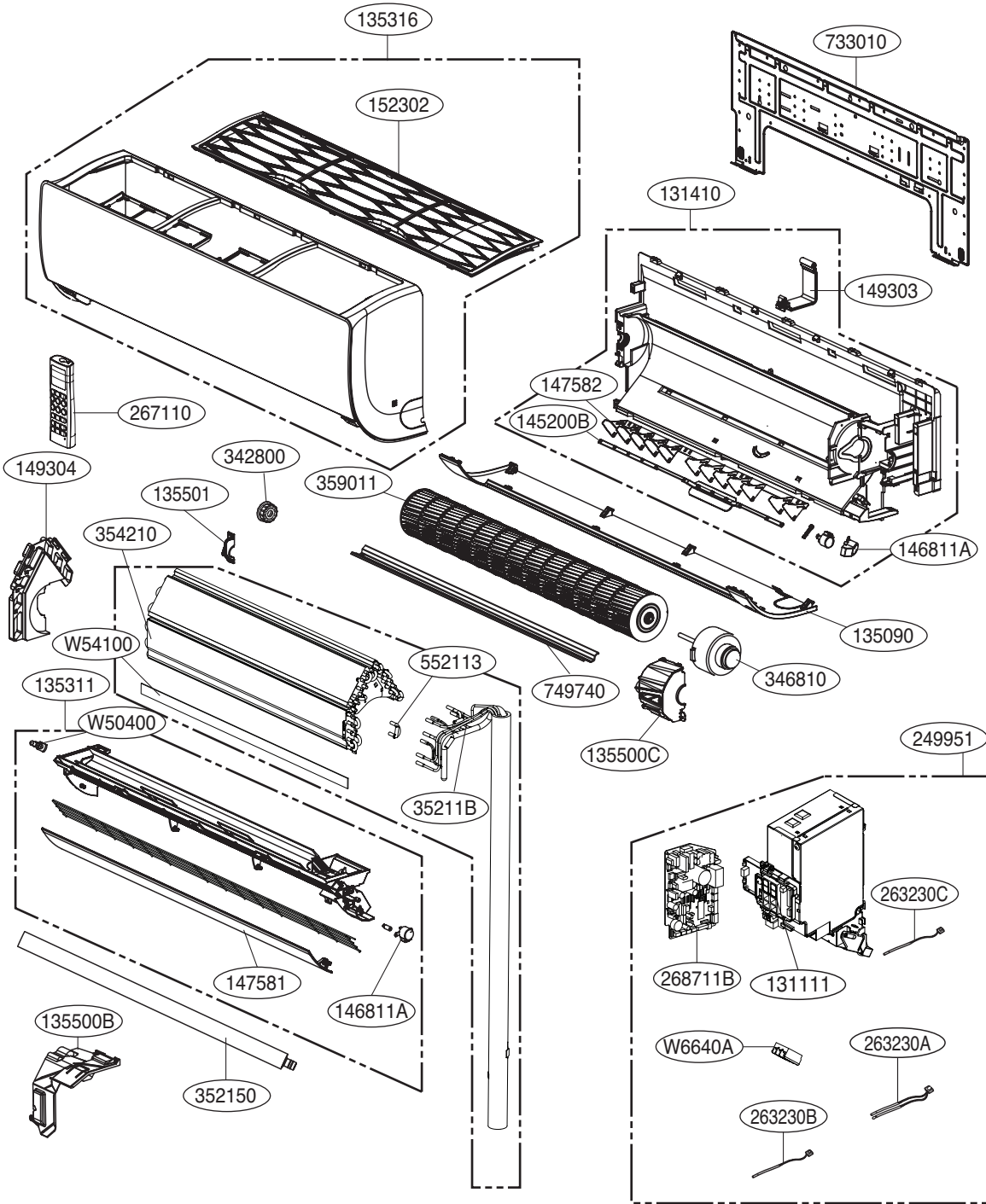


LOC.	Description	Connector
263230A	Thermistor for indoor air temperature	CN-TH1
	Thermistor for evaporator inlet temperature	
263230B*	Thermistor for evaporator middle temperature	CN-TH3
263230C	Thermistor for evaporator outlet temperature	CN-TH2

Note) \*: AMNW07GDJB0(LMN079HVT), AMNW15GDJB0(LMN159HVT)  
Models are not Applied Mid-Temperature sensor(CN-TH3).



**Indoor Unit: S4NW18KP1DA (LSN180HSV5), AMNW24GDKB0(LMN249HVT),  
S4NW18KPRDA(LAN180HSV5)**



LOC.	Description	Connector
263230A	Thermistor for indoor air temperature	CN-TH1
	Thermistor for evaporator inlet temperature	
263230B*	Thermistor for evaporator middle temperature	CN-TH3
263230C	Thermistor for evaporator outlet temperature	CN-TH2

Note)\*: AMNW24GDKB0(LMN249HVT)  
Models are not Applied Mid-Temperature sensor(CN-TH3).



P/NO : MFL70181204

January,2018