



Home Comfort Solutions



LG Duct-Free Split systems

Precise climate control

Made easy

Control you never thought possible in every room of your home.



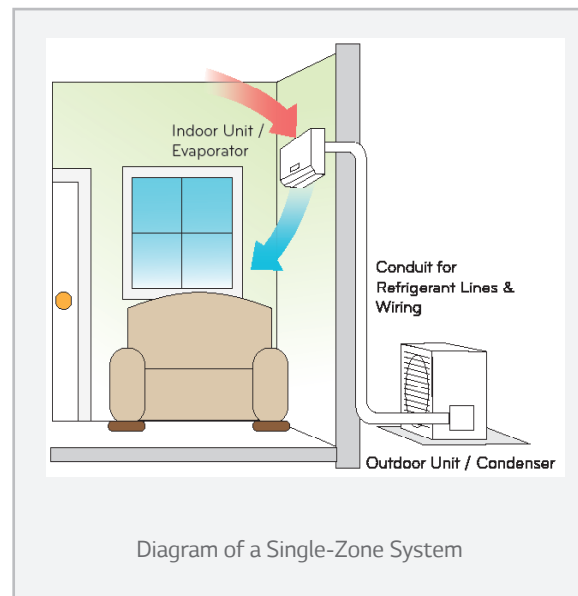
Home Comfort Solutions by LG are Duct-Free Split systems that allow you to cool or heat your entire home or just a single room without the need for invasive ductwork. There's no tearing down of walls or altering your home's appearance. LG Duct-Free Split systems are simple to have installed. In most cases, a professional contractor gets the job done in less than a day.

How LG Duct-Free Split systems work

LG Duct-Free Split air-conditioning and heating systems consist of three basic components: an inverter-driven outdoor unit, a stylish and quiet indoor unit that delivers conditioned air to the room, and compact conduit for refrigerant lines and wiring that connects the units. This design allows for energy conservation by targeting only those areas that need cooling or heating, a cost-effective feature when only certain portions of a building are being used.

LG Duct-Free Split systems can be used virtually anywhere

LG delivers advanced climate control and operating efficiency to a wide range of residential and light commercial projects, from a stuffy bedroom to a home addition where cooler temperatures are required.



Applications may include:

- Older homes
- Sunrooms
- New home constructions
- Room additions
- Bedrooms
- Home offices
- Basements
- Kitchens
- Attics
- Garages

LG Duct-Free Split systems bring comforting innovation



Benefits of Duct-Free Split systems

- Reduced energy costs—LG's evolved technology can make a difference in cooling and heating bills
- Incredibly quiet—With advanced motor and fan designs, LG units operate at low sound levels
- Custom temperature control—Precise temperature settings in each zone
- Beautiful design—Variety of elegant looks to complement any decor
- Enhanced air circulation—Electronically controlled louvers and fan speeds designed to keep room temperatures consistent
- High-speed cooling—Powerful Jet Cool setting quickly lowers the temperature of warm rooms
- Dependable heating—An excellent source of primary or supplemental heating in the cooler months
- Built to last—LG's commitment to quality means years of dependable comfort
- Convenient controls—All indoor units include a handheld or a wall-mounted controller

The advantages of inverter technology

Inverter variable-speed outdoor units are measurably quieter and use less energy than conventional air conditioners. Unlike conventional air conditioners that cycle on and off, an inverter compressor ramps up or down to match the capacity and maintain comfort levels.

SEER: Your guide to cool savings

An acronym for Seasonal Energy Efficiency Ratio, SEER is the industry-wide rating measurement that conveys energy consumption information to consumers. The higher the number, the more efficiently a product will produce cool air...and operating efficiency is a big step in conserving our natural resources. Your contractor will be happy to explain SEER numbers in greater detail, and help you determine which LG Duct-Free Split system is best for your unique requirements.

HSPF: For cost-saving coziness

Heating Seasonal Performance Factor, or HSPF, represents the total heating output when compared to the electricity used. Like SEER, the higher the HSPF rating, the more efficiently a product will produce warm air. If you live in a climate that requires heating in the winter months, as well as cooling in the summer, ask your contractor to determine the ideal Duct-Free Split system for you.

One room, wonderful solutions... single-zone systems



Who needs ductwork?

Are you planning a new room addition? Do you have a space that never gets cool enough, like the bonus room over your garage? Or warm enough, like the sunroom in the fall? In the past, homeowners have turned to window units, or faced the expense of enlarging their central air-conditioning system. Now, there's a proven solution to cool or heat any room — an LG single-zone Duct-Free Split system.

Benefits of single-zone Duct-Free Split systems

- Available in a full range of capacities for all room sizes
- More energy efficient than window units and central air-conditioning systems
- All-season use—heat pump models have both cooling and heating capabilities
- Quiet operation, inside and out
- Usually installed in less than a day
- Many units are ENERGY STAR® rated
- Twelve models were awarded the ENERGY STAR® Most Efficient designation for 2014



ENERGY STAR® is a joint program of the U.S. Environmental Protection Agency (EPA) and the U.S. Department of Energy (DOE) created to promote energy-efficient products and practices. The ENERGY STAR® logo helps homeowners identify which products meet energy efficiency performance levels set by U.S. EPA and U.S. DOE.

Style and substance... single-zone indoor units



Many styles, many choices


There's no need to compromise when it comes to comfort. LG Duct-Free Split single-zone systems offer many styles of indoor units to enhance any decor, plus performance that lets you enjoy every room to the fullest. And they're available in a full range of capacities to perfectly match any size space, large or small. Whether you need cooling or heating, LG offers the perfect Duct-Free Split performance package.

up to **27.5** SEER

Art Cool™ Premier



Supreme Efficiency
Wall-Mounted Indoor Units




up to **20.5** SEER

Art Cool™ Mirror



High Efficiency
Wall-Mounted Indoor Units




up to **21.5** SEER

Standard



High Efficiency
Wall-Mounted Indoor Units



up to **17.0** SEER

Mega Standard



Wall-Mounted Indoor Units

up to **20.0** SEER

Ceiling Cassette



Indoor Units

up to **17.6** SEER




Ceiling Concealed Duct (High Static)

up to **21.0** SEER



Extended Pipe Wall-Mounted
Indoor Units



Uniquely LG. It looks like a work of art—and it is!

up to **16.0** SEER



The ingenious **Art Cool™ Gallery Inverter Indoor Unit** cools and warms with world-class efficiency...and flair. Frame any artwork or photo (20 x 20 inches or smaller) that you wish to display. And changing images couldn't be easier.



The more rooms the better with Multi F systems



One LG inverter-driven multi-zone outdoor unit can support two, three, four, or up to eight indoor units, providing personalized cooling and heating for an entire home. Compact refrigerant pipes work in tandem with wiring to link the outdoor unit with all indoor units, either directly or through a branch distribution (BD) unit (Multi F MAX systems).

Multiple rooms add up to multiple benefits

- Long refrigerant piping lengths allow for extra design flexibility in indoor unit installation
- Each indoor unit includes its own controller
- Indoor units are available in a full range of capacities for all room sizes
- Easy installation: little to no ductwork required; most indoor units can mount on any wall
- Indoor unit and outdoor unit dimensions ensure space-saving convenience
- All-season use—heat pump models have both cooling and heating capabilities

up to
21.0
SEER



LMU187HV

Dual-Zone
Multi F
Outdoor
Units



up to
21.7
SEER



LMU247HV

Tri-Zone
Multi F
Outdoor
Units



up to
17.5
SEER



LMU369HV

Quad-Zone
Multi F
Outdoor
Units



up to
18.4
SEER



LMU540HV

Eight-Zone
Multi F MAX
Outdoor
Units

The more rooms the better with Multi F systems



Multi F systems have multiple indoor units

Select from a variety of sleek, elegant indoor units to complement any decor. And the choice is not limited to one type of indoor unit per system—mix and match according to function and style!



Multi F Art Cool™ Mirror
Wall-Mounted Indoor Units



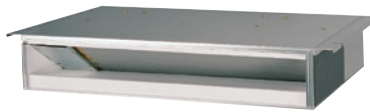
Multi F Standard Wall-Mounted
Indoor Units



Art Cool™ Gallery
Inverter Indoor Units



Ceiling Concealed Duct
(High Static)



Multi F Ceiling Concealed
Ducted Indoor Units



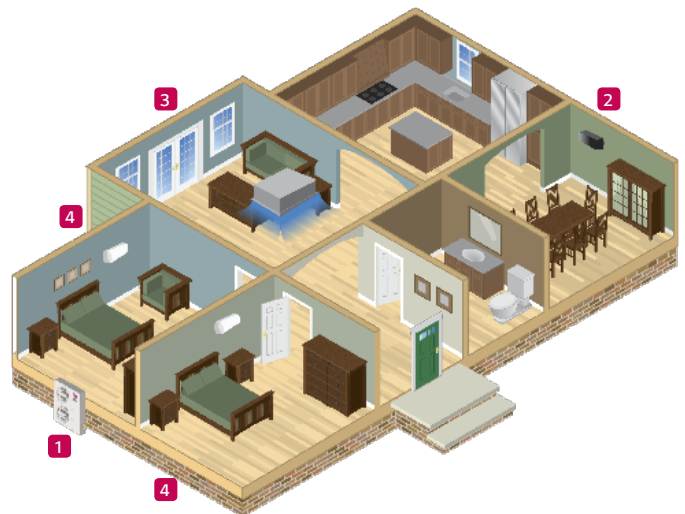
Multi F Ceiling Cassette
Indoor Units



Multi F Vertical-
Horizontal Air
Handling Unit

Make yourself at home...diagram of a Multi F multi-zone system

- 1 One outdoor condensing unit (Multi F MAX system) can support up to eight indoor units.
- 2 An Art Cool™ Mirror indoor unit shines in the dining room.
- 3 A ceiling cassette indoor unit in the living room—the look preferred by many homeowners.
- 4 Standard wall-mounted indoor units in the master and second bedrooms. Precise comfort in your personal retreat.



Convenient remote controls simplify all setting functions. Many remote controls can also be wall mounted.



Visit LGHomeComfort.com.

Our site is an excellent resource for information, and it's where you'll find the LG Trained Contractors in your area.

LG Electronics U.S.A., Inc. HVAC Division
11405 Old Roswell Road, Alpharetta, GA 30009