

Job Name/Location:

Tag #:

Date: _____ For: File Resubmit
 PO No.: _____ Approval Other _____
 Architect: _____ GC: _____
 Engr: _____ Mech: _____
 Rep: _____
(Company) (Project Manager)



LC247HV
 Ceiling Cassette Single Zone
 Outdoor Unit (ODU) - LUU247HV Indoor Unit (IDU) - LCN247HV



Performance:

Cooling Capacity (Btu/h)	24,000
Heating Capacity (Btu/h)	27,000
SEER	17
EER	12.56
HSPF	9.7

SEER - Seasonal Energy Efficiency Ratio EER - Energy Efficiency Ratio
 HSPF - Heating Seasonal Performance Factor

Electrical:

Outdoor Unit:

Power Supply (V ¹ /Hz/Ø)	208-230/60/1
MOP (A)	30
MCA (A)	18.1
Cooling Rated Amps (A)	12.2
Heating Rated Amps (A)	16.0
Compressor (A)	13.5
Fan (A)	0.6

MOP - Maximum Overcurrent Protection MCA - Minimum Circuit Ampacity

Indoor Unit:

Power Supply (V ¹ /Hz/Ø)	208-230/60/1
Cooling Power Input (kW)	1.91
Heating Power Input (kW)	2.60

Piping:

Refrigerant Charge (lbs)	4.41
Liquid Line (in, OD)	3/8
Suction Line (in, OD)	5/8
Max Pipe Length (ft) ¹	164
Max Elevation (ft)	98

Features:

- Inverter (Variable speed compressor)
- Internal condensate pump
- Swirl Wind
- Jet Cool
- Independent vane control
- Evaporator frost control
- Auto restart
- Auto changeover
- Ultra-quiet turbo fan
- Built-in low ambient standard, down to 5°F (cooling mode)
- Night quiet operation

Included Accessories:

- 7-Day Programmable Controller (White) - PQRVSL0QW

Required Accessories (sold separately)

- Cassette Grille (PT-UMC)

Optional Accessories (sold separately):

- Wireless Handheld Remote Controller – PQWRHDF0
- Plasma Kit - PTPKMO
- Ventilation³ Kit - PTVK410+PTVK420
- Auto Elevation Kit - PTEGMO
- PI485 - PMNFP14A0

Operating Range:

Outdoor Unit:

Cooling (°F DB)	5-118
Heating (°F WB)	0-64

Indoor Unit:

Cooling (°F DB)	64-90
Heating (°F DB)	60-77

Unit Data:

Refrigerant Type	R410A
Refrigerant Control	EEV
IDU Sound Pressure (H/M/L) ±3 dB(A) ⁴	38/36/34
ODU Sound Pressure Max (Cool/Heat) ±3 dB(A) ⁴	48/52
ODU Net Unit Weight (lbs)	133
ODU Shipping Weight (lbs)	146
IDU Net Unit Weight	46
IDU Shipping Weight (lbs)	58
Grille Weight (lbs)	11
Grille Shipping Weight (lbs)	20

Fan:

Fan Type	Turbo
Air Circulation (CFM H/M/L)	600/530/459
Fan Speeds (Fan/Cooling/Heating)	4/5/4
Dehumidification (pts/hr)	5.1

Standard Features:

- Limited Seven Year Compressor Warranty
- Limited Five Year Functional Parts Warranty

Notes:

1. Acceptable operating voltage: 187V - 253V.
2. Piping lengths are equivalent.
3. Must comply with applicable codes for fire isolation dampers.
4. Sound pressure levels are tested in an anechoic chamber under ISO Standard 1996.
5. All communication cable to be minimum 18 American wire gage (AWG), 2-conductor, stranded, shielded and must comply with applicable local and national code.
6. This unit comes with a dry helium charge.
7. Nominal data is rated 0 ft above sea level, with 25 ft of refrigerant line and a 0 ft level difference between outdoor and indoor units.
8. Power wiring cable size must comply with the applicable local and national code.
9. Must follow installation instructions in the applicable LG installation manual.



For continual product development, LG reserves the right to change specifications without notice.

LG Electronics U.S.A., Inc., Englewood Cliffs, NJ. All rights reserved. "LG Life's Good" is a registered trademark of LG Corp. /www.lghvac.com

Outdoor Unit (ODU) - LUU247HV

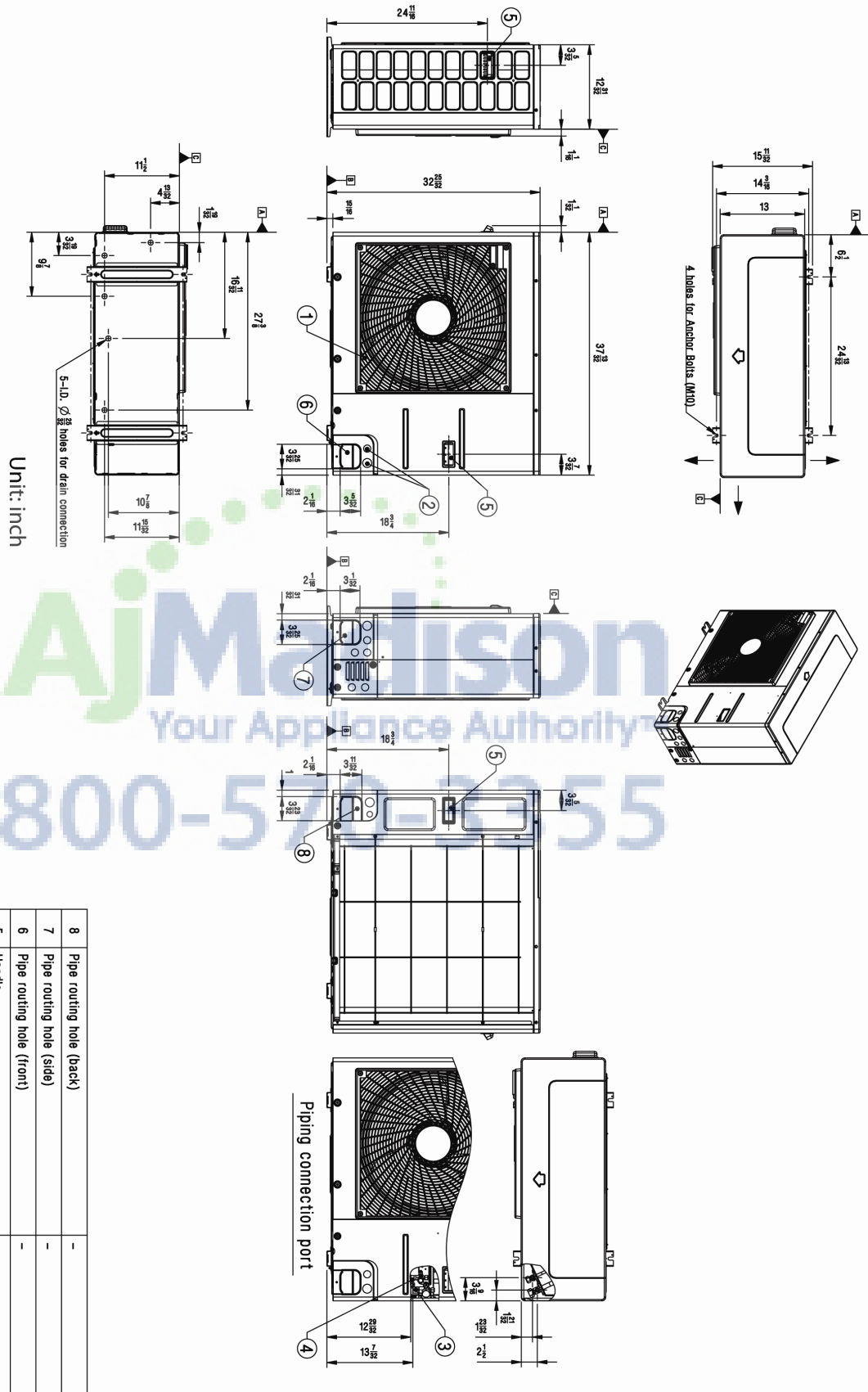
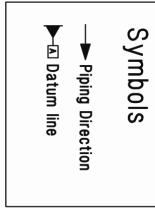
Ceiling Cassette Single Zone



Tag #: _____

Date: _____

PO No.: _____



Aj Madison
Your Appliance Authority
800-570-2355

No.	Part Name	Description
1	Air Outlet	-
2	Power and communication cable Hole	-
3	Gas Pipe Connection	Flare joint
4	Liquid Pipe Connection	Flare joint
5	Handle	-
6	Pipe routing hole (front)	-
7	Pipe routing hole (side)	-
8	Pipe routing hole (back)	-

Indoor Unit (IDU) - LCN247HV

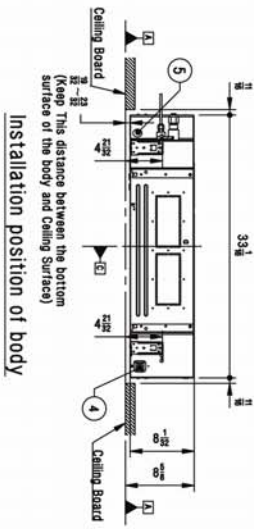
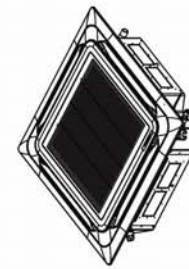
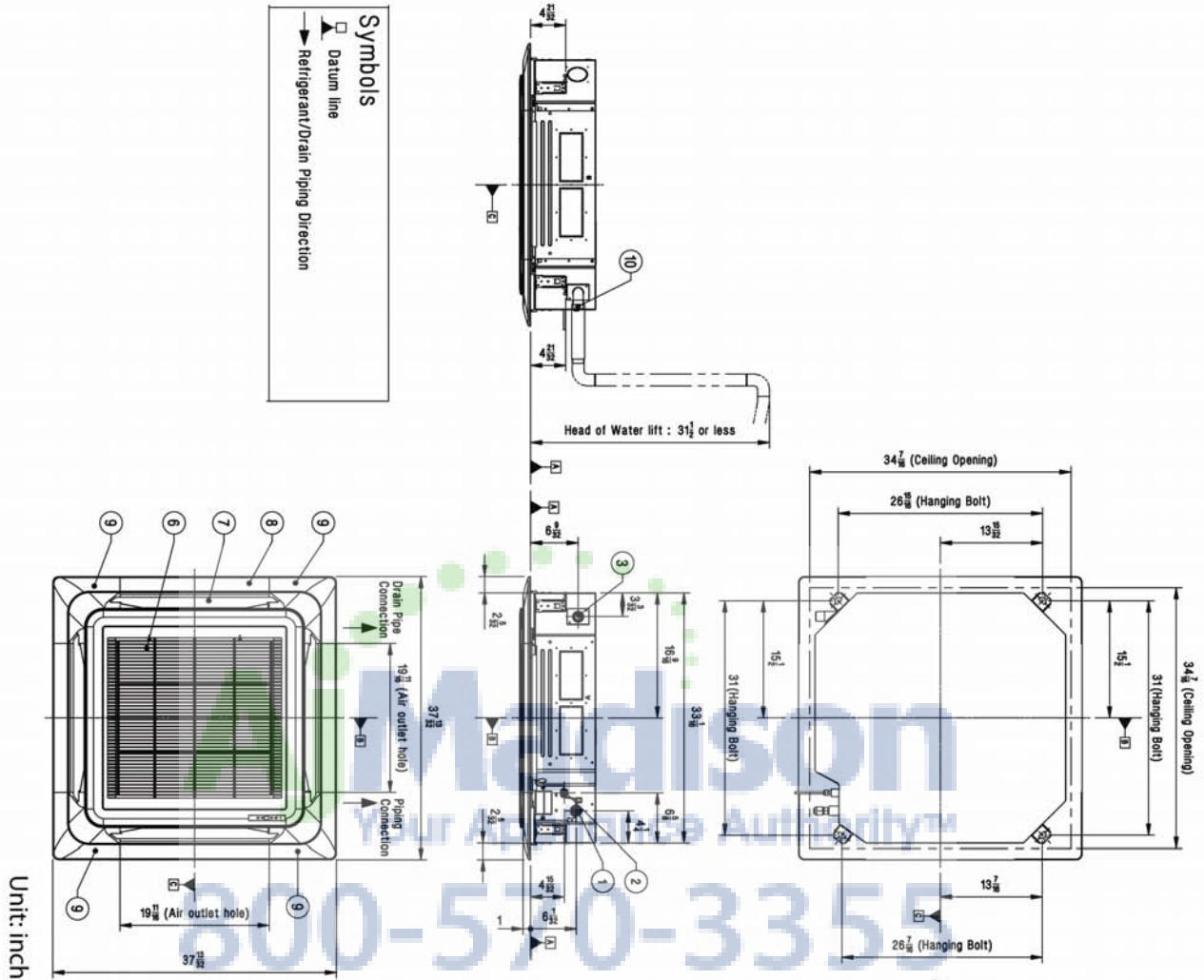
Ceiling Cassette Single Zone



Tag #: _____

Date: _____

PO No.: _____



No.	Part Name	Description
10	Flexible Drain Hose	Supplied with product
9	Decoration Corner Cover	Supplied with panel
8	Decoration Panel (Accessory)	PT-UMC
7	Air Outlet	-
6	Air Inlet	-
5	Wired remote controller wire routing hole	-
4	Power and communication cable routing hole	-
3	Drain Pipe Connection	-
2	Liquid Pipe Connection	-
1	Gas Pipe Connection	-