

ASSEMBLY INSTRUCTIONS

SEDONA by LYNX LIAK400, LIAK500, LIAK600 & LIAK700 ISLAND ADAPTOR KITS

NOTE: THIS ADAPTOR KIT IS DESIGNED TO ASSIST IN GRILL INSTALLATION INTO A BAR-B-Q ISLAND WHEN THERE IS AN EXISTING CUTOUT WHICH IS LARGER (IN EITHER WIDTH OR DEPTH) THAN THE RECOMMENDED CUTOUT SIZE FOR THE SEDONA GRILL.

USE THIS KIT IF YOUR CUTOUT SIZE IS

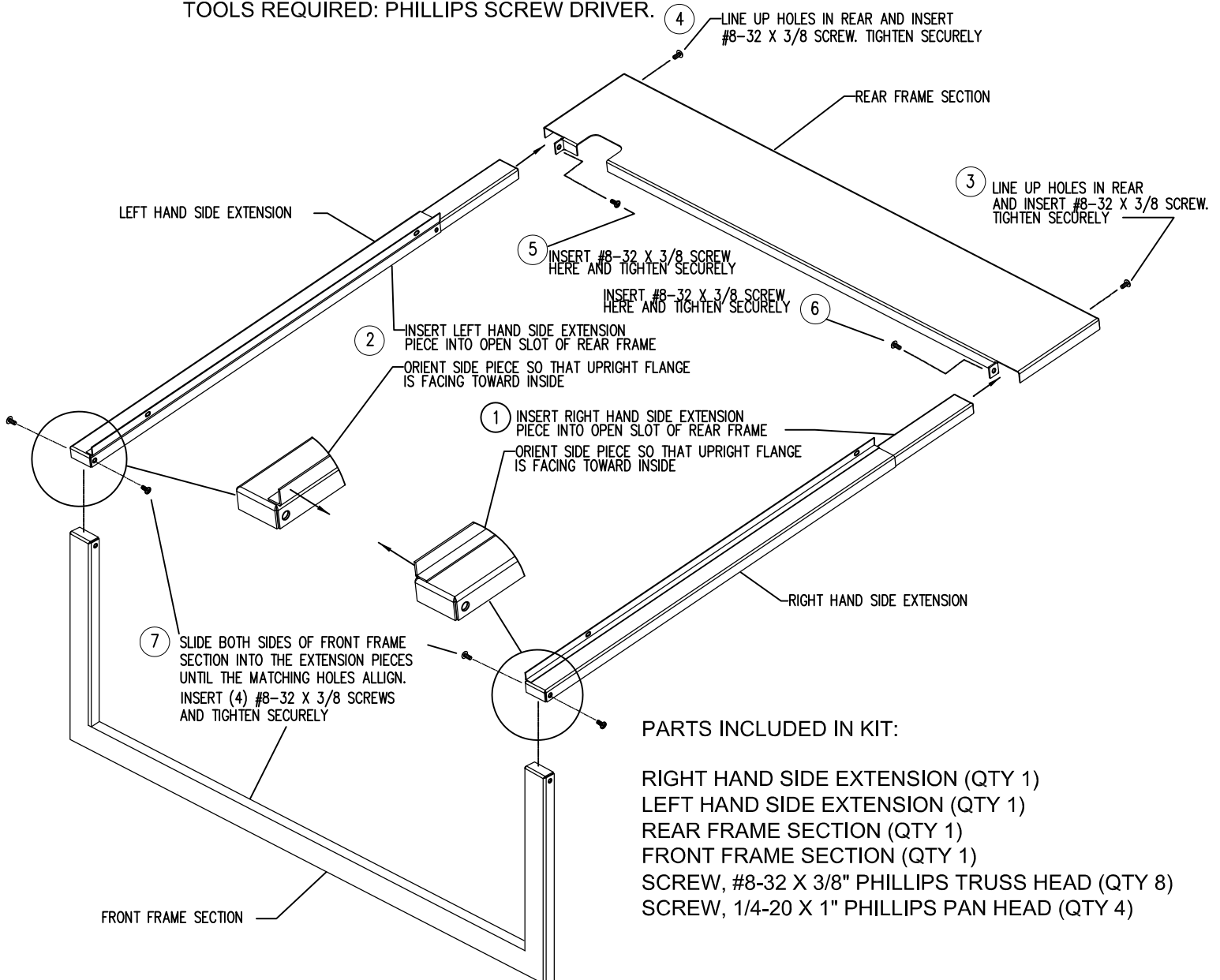
23" TO 26" WIDE (L400) , 19-3/4" TO 25-1/4" DEEP, OR 9-1/4" TO 11-1/4" HIGH.

29" TO 32" WIDE (L500) , 19-3/4" TO 25-1/4" DEEP, OR 9-1/4" TO 11-1/4" HIGH.

35" TO 38" WIDE (L600) , 19-3/4" TO 25-1/4" DEEP, OR 9-1/4" TO 11-1/4" HIGH.

41" TO 44" WIDE (L600) , 19-3/4" TO 25-1/4" DEEP, OR 9-1/4" TO 11-1/4" HIGH.

TOOLS REQUIRED: PHILLIPS SCREW DRIVER.



PARTS INCLUDED IN KIT:

- RIGHT HAND SIDE EXTENSION (QTY 1)
- LEFT HAND SIDE EXTENSION (QTY 1)
- REAR FRAME SECTION (QTY 1)
- FRONT FRAME SECTION (QTY 1)
- SCREW, #8-32 X 3/8" PHILLIPS TRUSS HEAD (QTY 8)
- SCREW, 1/4-20 X 1" PHILLIPS PAN HEAD (QTY 4)



LIAK400, LIAK500, LIAK600, LIAK700
 ADAPTOR KIT FOR SEDONA by LYNX L400, L500, L600, L700 GRILLS
 (FITS ISLAND CUTOUT SIZES SHOWN BELOW)

INSTALLATION INSTRUCTIONS

BEFORE STARTING, INSPECT ISLAND AND CHECK TO SEE IF THE TOP OF THE ISLAND OVERHANGS THE FRONT. THIS IS KNOWN AS THE BULLNOSE. IF SO, THIS OVERHANGING PORTION WILL NEED TO BE NOTCHED TO ACCOMMODATE THE GRILL AND ADAPTOR. THE DEPTH OF THE NOTCH IS THE SAME DISTANCE THAT THE BULLNOSE OVERHANGS. THE WIDTH OF THE NOTCH WILL VARY DEPENDING ON THE OPENING CUTOUT WIDTH. THE NOTCH WILL VARY FROM 1/2" WIDE TO 2" WIDE. THE FORMULA FOR EACH SIZE IS:
 LIAK400- 26-3/4" (ADAPTOR WIDTH) MINUS (-) CUTOUT WIDTH, DIVIDED BY 2, PLUS(+)/1/8".
 LIAK500- 32-3/4" (ADAPTOR WIDTH) MINUS (-) CUTOUT WIDTH, DIVIDED BY 2, PLUS(+)/1/8".
 LIAK600- 38-3/4" (ADAPTOR WIDTH) MINUS (-) CUTOUT WIDTH, DIVIDED BY 2, PLUS(+)/1/8".
 LIAK700- 44-3/4" (ADAPTOR WIDTH) MINUS (-) CUTOUT WIDTH, DIVIDED BY 2, PLUS(+)/1/8".

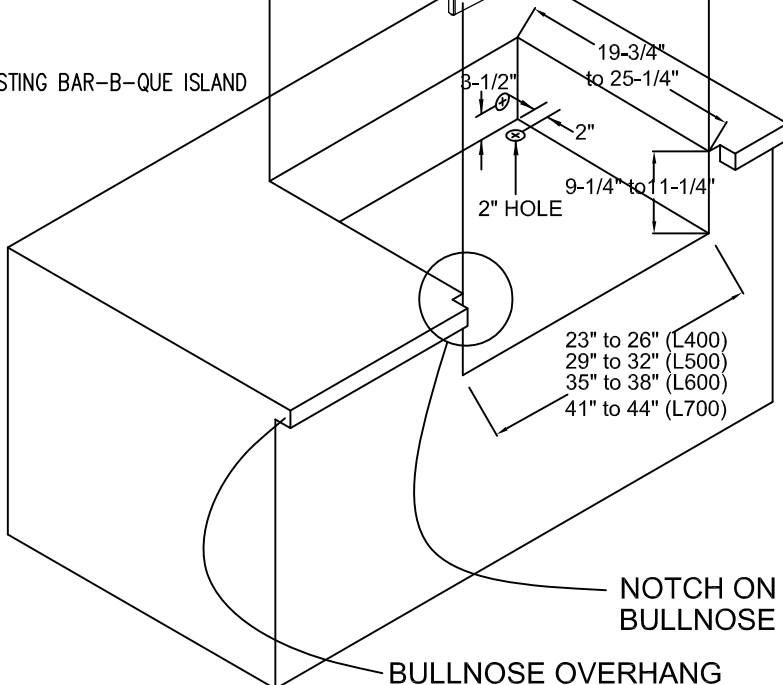
SEDONA by LYNX GRILL
 L400
 L500
 L600
 L700



1/4-20 x 1"
 PHILLIPS SCREW
 ADDED TO ASS'Y
 (4 PLACES)

ADAPTOR KIT
 LIAK400
 LIAK500
 LIAK600
 LIAK700

EXISTING BAR-B-QUE ISLAND



- 1) PLACE THE GRILL ON A FLAT SURFACE AND REMOVE BOTH GRATES.
- 2) REMOVE BOTH THE REAR SCREW AND THE FRONT SCREW FOUND ON THE INSIDE TOP EDGE OF THE GRILL. REPEAT THIS FOR THE 2 SCREWS LOCATED ON THE LEFT SIDE (4 SCREWS TOTAL). DO NOT REMOVE THE MIDDLE SCREWS.
- 3) INSERT THE LONGER SCREWS (1/4-20 X 1") INTO THE SAME (4) LOCATIONS. TURN THE SCREWS JUST ENOUGH TO STAY IN PLACE.
- 4) PLACE THE ASSEMBLED ADAPTOR FRAME (SEE PAGE 1 FOR ASSEMBLY) INTO POSITION ONTO ISLAND CUTOUT. CENTER FRAME OVER CUTOUT.
- 5) USING 2 PEOPLE, CAREFULLY LIFT THE GRILL OVER THE ADAPTOR FRAME AND ISLAND CUTOUT. LOWER THE GRILL OVER THE ADAPTOR FRAME SO THE VERTICAL FLANGES OF THE FRAME ARE LOCATED INSIDE THE OUTER FLANGES OF THE GRILL. THE FRONT FRAME SECTION WILL BE BEHIND THE FRONT BULLNOSE BRACKETS OF THE GRILL.
- 6) PUSH GRILL AND FRAME ALL THE WAY INWARD UNTIL THE FRAME TOUCHES AND IS TIGHT AGAINST THE FRONT OF THE ISLAND. CENTER GRILL OVER FRAME.
- 7) DRIVE THE (4) SCREWS, INSTALLED IN STEP #3, ALL THE WAY IN UNTIL TIGHT. THIS SECURES THE GRILL TO THE FRAME.

IMPORTANT NOTE: THIS KIT IS ONLY TO BE USED WITH NON-COMBUSTIBLE ISLAND SURFACES. PLEASE REFER TO THE SEDONA CARE AND USE MAUNAL, ACCOMPANING THE GRILL, FOR PROPER CLEARANCES WHEN MOUNTING INTO COMBUSTIBLE ISLAND MATERIALS.