

Soap and Lotion Dispenser

KSD-42

Item NO.:

CH ☐
BN ☐
ORB ☐
GRB ☐

Soap and Lotion Dispenser KSD-42

Dimensions:

Overall Height: 11.0" Spout Height: 2.3"
Diameter : 2.2" Spout Reach: 3.4"

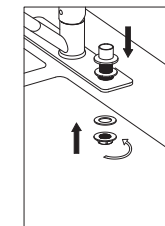
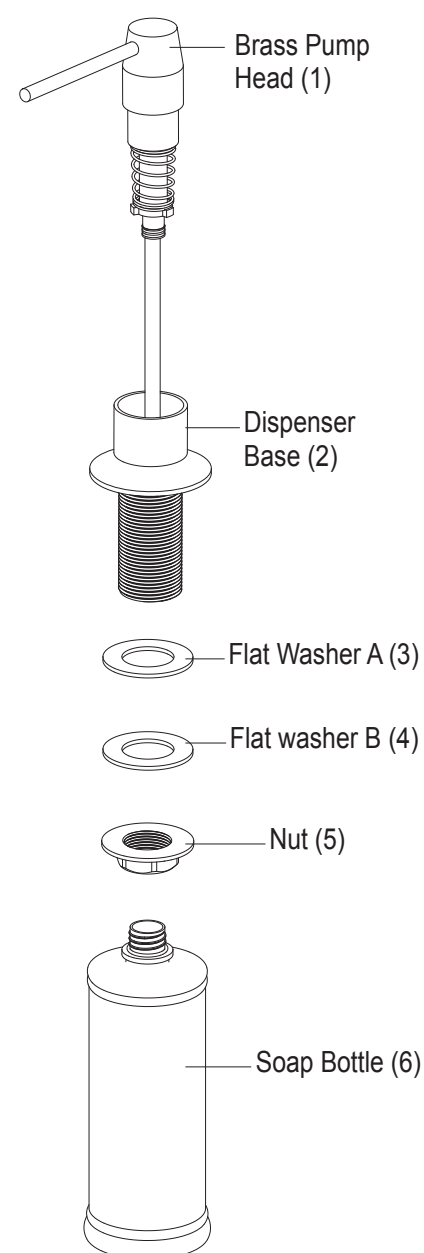
Tools and Supplies you will need:

Adjustable Wrench



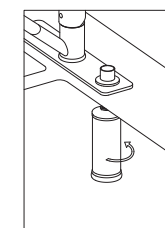
Step 1

Remove soap bottle (6) from dispenser base (2). Pull pump head (1) out of dispenser base (2). Unthread nut (5) from the bottom of dispenser base (2) and remove flat washer B (4)



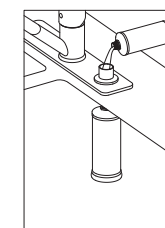
Step 2

Install dispenser base (2) into hole (either on escutcheon plate or in countertop). Reinstall flat washer B (4) and nut (5) from underneath sink or countertop. Tighten with adjustable wrench until snug



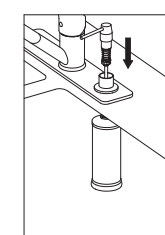
Step 3

Thread soap bottle (6) onto dispenser base (2) from underneath sink or countertop. Hand-tighten only



Step 4

Fill soap bottle (6) from top with 8 ounces of soap or lotion



Step 5

Insert pump head (1) into dispenser base (2) from top

1.800.775.0703
customerservice@kraususa.com
www.kraususa.com