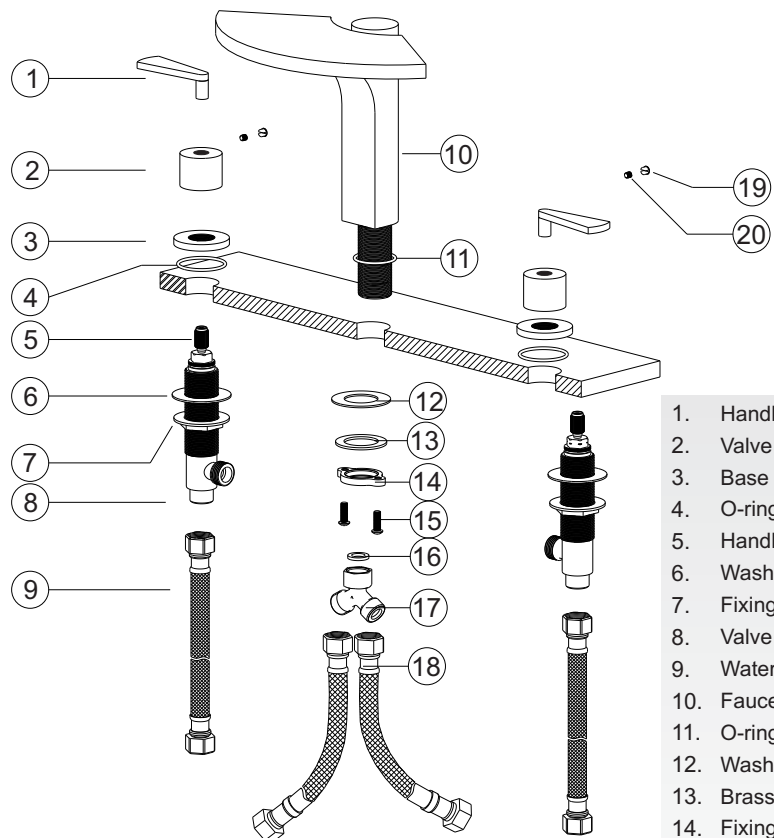


Replacement Parts

Keep this manual for ordering replacement parts.



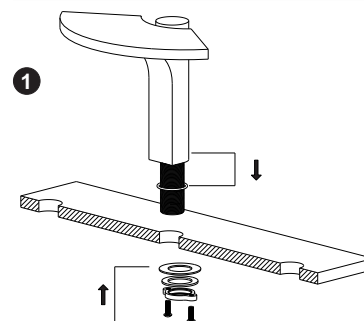
1. Handle
2. Valve cover
3. Base plate
4. O-ring
5. Handle connector
6. Washer
7. Fixing ring
8. Valve
9. Water lines
10. Faucet body
11. O-ring
12. Washer
13. Brass washer
14. Fixing ring
15. Mounting screws
16. Washer
17. Three way connector
18. Water lines
19. Decorative cap
20. Set screw

Trouble - Shooting

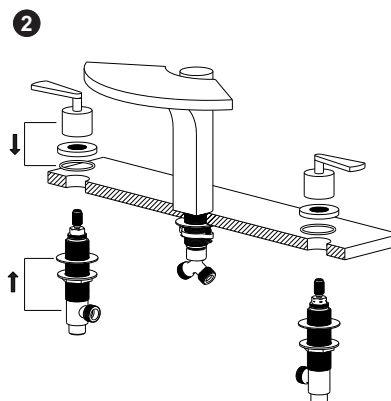
PROBLEM	CAUSE	ACTION
Leaks underneath handle	Adjusting ring or cap has come loose.	Tighten the adjusting ring or cap.
Aerator leaks or has an inconsistent water flow pattern.	Aerator is dirty or misfitted.	Unscrew the aerator to check rubber packing or replace the aerator.
Water will not shut off completely.	Dirty or worn out plastic washer in the cartridge.	Remove handle and cartridge to check if ceramic disk is damage permanently or dirty. Re-install cartridge.

Contact Us Toll-Free at 1-800-775-0703; or visit our website at www.kraususa.com 2008-2011 Kraus USA Inc.

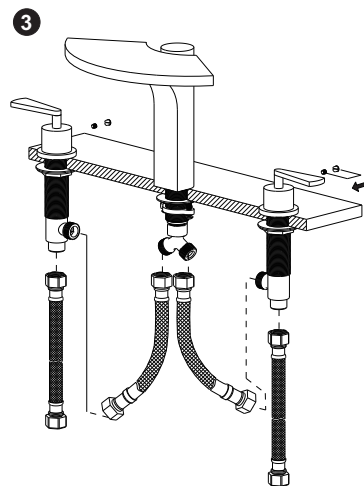
Installation



Fit O-ring 10 into the bottom groove of faucet body 9. Insert faucet body 9 into specified drill hole (1 1/4" - 1 1/2") on the counter top. Install washer 11 and brass washer 12 to the threaded tail pipe of the faucet body 9 from underneath the counter top and then screw the fixing ring 13. Fix faucet body 9 correctly and install the three way connector 16 by screwing onto the threaded tail pipe of the faucet body 9.



Install valve 8 into specified drill hole underneath the counter top. Place o-ring 4 into the base plate 3. Screw base plate 3 and the valve cover 2 into valve 8. Adjust the height and position of valve 8, then screw fixing ring 7 to tighten valve 8 underneath counter top securely. Install handle 1 to handle connector 5 of valve 8. Tighten set screw 20 with alley key and then place decorative cap 19 on handle 1.



Screw waterlines 18 into three way connector 17 and valve 8. Connect waterlines 9 onto the bottom of valve 8 and then to main water supply line.

Contact Us Toll-Free at 1-800-775-0703; or visit our website at www.kraususa.com 2008-2011 Kraus USA Inc.