

# JennAir® RISE™ 27" Microwave/Wall Oven with MultiMode® Convection System

## JOECC327TL



## Features

### MultiMode® True Convection System

A meticulously engineered whirling metal fan circulates the steady heat generated by a 3,200-watt element, weaving it around every flat-tined rack. This convection system helps you transform marbled meats into succulent roasts.

### 7.8 Full Color Ultra Wide LCD Display

Visually vibrant. This highly interactive, full-color LCD display allows you to navigate effortlessly through settings and the algorithms of JennAir® Culinary Center recipes.

### Smart Wall Oven

Fluently control your wall oven—whether in the kitchen or not. The JennAir® App empowers you to remotely control and monitor the oven, prompts you when it's time to tend to your dish or you can select from chef-inspired recipes designed to provide you with effortlessly delicious results. Use simple voice commands with your Google Assistant or Alexa-enabled device\* for an even more seamless cooking experience.

### Air Fry

Achieve crispy, yet juicy results on your favorites, from fresh vegetables to guilty-pleasure fried foods. Use Air Fry to circulate hot air around the tray to crisp food using little to no additional oil.

### Speed-Cook

Three potent cooking methods converge to deliver an oven-caliber bite: steady convection baking, microwave speed and intense broiler caramelization.

### Accessories

W11242909	FLAT RACK, JA 30"
W11256306	ROLLING RACK, JA,30"



## Product Details

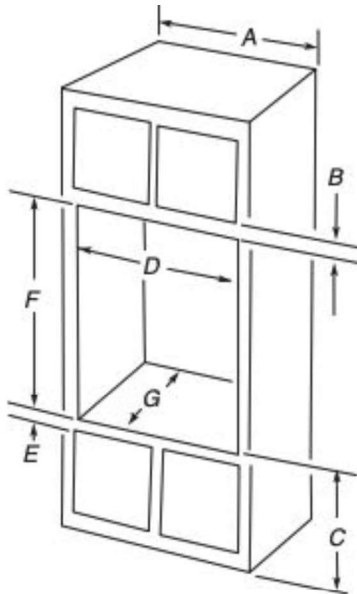
Capacity	5.7 Cu Ft
Convection	True Convection
Energy Rating	364 kWh

# JennAir® RISE™ 27" Microwave/Wall Oven with MultiMode® Convection System

## JOECC327TL



### Standard Cutout



#### 27" (68.6 cm) models

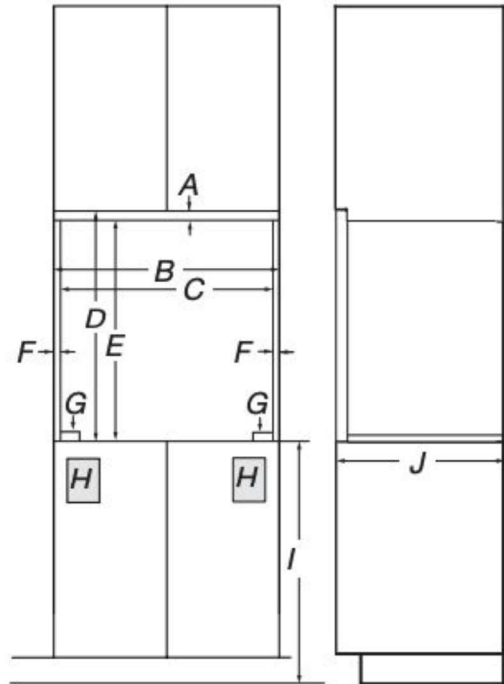
- A. 27" (68.6 cm) minimum cabinet width
- B. 2<sup>1</sup>/<sub>4</sub>" (5.7 cm) top of cutout to bottom of upper cabinet door
- C. 19<sup>1</sup>/<sub>4</sub>" (48.9 cm) bottom of cutout to floor is recommended. 7"-19<sup>1</sup>/<sub>4</sub>" (17.8-48.9 cm) bottom of cutout to floor is acceptable.
- D. 25<sup>1</sup>/<sub>2</sub>" (64.8 cm) minimum cutout width
- E. 1<sup>1</sup>/<sub>2</sub>" (3.8 cm) minimum bottom of cutout to top of cabinet door
- F. 41<sup>9</sup>/<sub>16</sub>" (105 cm)\* recommended cutout height
- G. 24" (60.7 cm) cutout depth

#### 30" (76.2 cm) models

- A. 30" (76.2 cm) minimum cabinet width
- B. 2<sup>1</sup>/<sub>4</sub>" (5.7 cm) top of cutout to bottom of upper cabinet door
- C. 19<sup>1</sup>/<sub>4</sub>" (48.9 cm) bottom of cutout to floor is recommended. 7"-19<sup>1</sup>/<sub>4</sub>" (17.8-48.9 cm) bottom of cutout to floor is acceptable.
- D. 28<sup>1</sup>/<sub>2</sub>" (72.4 cm) minimum cutout width
- E. 1<sup>1</sup>/<sub>2</sub>" (3.8 cm) minimum bottom of cutout to top of cabinet door
- F. 41<sup>9</sup>/<sub>16</sub>" (105 cm)\* recommended cutout height
- G. 24" (60.7 cm) cutout depth

**\*NOTE:** The cutout height can be between 41<sup>1</sup>/<sub>8</sub>" (104.5 cm) and 41<sup>7</sup>/<sub>8</sub>" (106.3 cm) for microwave/oven combination.

### Flush Cutout



#### 27" (68.6 cm) models

- A. 3/4" (1.9 cm) top cleat\*
- B. 27<sup>1</sup>/<sub>4</sub>" (69.2 cm) minimum width of flush inset cutout\*
- C. 25<sup>1</sup>/<sub>8</sub>" (65.7 cm) minimum width of opening
- D. 44<sup>9</sup>/<sub>16</sub>" (112.5 cm) minimum height of flush inset cutout
- E. 43<sup>9</sup>/<sub>16</sub>" (110.6 cm) recommended cutout height
- F. 11/16" (1.7 cm) side cleat\*
- G. 1/4" (0.6 cm) recommended with foot. 15/16" to 1<sup>5</sup>/<sub>16</sub>" (2.3 cm to 3.5 cm) allowable without foot.\*\*
- H. Recommended junction box location
- I. 4<sup>5</sup>/<sub>8</sub>"-19<sup>1</sup>/<sub>4</sub>" (11.7-48.9 cm) bottom of cutout to floor
- J. 25" (63.5 cm) minimum depth of cutout

#### 30" (76.2 cm) models

- A. 3/4" (1.9 cm) top cleat\*
- B. 30<sup>1</sup>/<sub>4</sub>" (76.8 cm) minimum width of flush inset cutout\*
- C. 28<sup>1</sup>/<sub>8</sub>" (73.3 cm) minimum width of opening
- D. 44<sup>9</sup>/<sub>16</sub>" (112.5 cm) minimum height of flush inset cutout
- E. 43<sup>9</sup>/<sub>16</sub>" (110.6 cm) recommended cutout height
- F. 11/16" (1.7 cm) side cleat\*
- G. 1/4" (0.6 cm) recommended with foot. 15/16" to 1<sup>5</sup>/<sub>16</sub>" (2.3 cm to 3.5 cm) allowable without foot.\*\*
- H. Recommended junction box location
- I. 4<sup>5</sup>/<sub>8</sub>"-19<sup>1</sup>/<sub>4</sub>" (11.7-48.9 cm) bottom of cutout to floor
- J. 25" (63.5 cm) minimum depth of cutout

## Electrical

- Electrical supply junction box should be located 3" (7.6 cm) maximum below the support surface when the oven is installed in a wall cabinet. A 1" (2.5 cm) minimum diameter hole should have been drilled in the right rear or left rear corner of the support surface to pass the appliance cable through to the junction box.

**NOTE:** For undercounter installation, it is recommended that the junction box be located in the adjacent right or left cabinet. If you are installing the junction box on rear wall behind oven, it is recommended that the junction box be recessed and located in the upper center of the cabinet.

- Models rated from 7.3 to 9.6 kW at 240 V (6.3 to 8.3 kW at 208 V) require a separate 40 A circuit. Models rated from 4.9 to 7.2 kW at 240 V (4.3 to 6.2 kW at 208 V) require a separate 30 A circuit. Models rated at 4.8 kW and below at 240 V (4.2 kW and below at 208 V) require a separate 20 A circuit.
- Oven must be connected to the proper electrical voltage and frequency as specified on the model/serial/rating plate. The model/serial/rating plate is located under the control panel on single ovens and under the control panel on the upper oven cavity on double ovens.