

Luxury



Signature Series

HP48FR-S - 48" Freezer/Refrigerator



□ HP48FR-S



Freezer/Refrigerator
HP48FR-S-1L-1R



Freezer/Refrigerator
HP48FR-S-5-5

General Signature Series Features

- Zero-clearance hinging allows for abutment with surrounding cabinetry
- Perlick's exclusive commercial-grade variable speed compressor
- Front-vented, RAPIDcool forced-air refrigeration system
- Commercial-grade stainless steel interior and exterior
- **Industry Exclusive** convertible door design allows all doors the ability to be converted to wood overlay from stainless steel
- **Industry Exclusive** adjustable, full-extension pull-out shelves (drawer models and beer dispensers excluded)
- Stainless-steel ball-bearing glides provide smooth movement of shelves
- Low E, UV-coated glass provides industry leading insulation and protection.
- State-of-the-art digital control module
- Optional door locks and Industry-Exclusive drawer locks
- 11 cubic feet of capacity
- Industry Best Three-Year Warranty plus additional three years on sealed system

Refrigerator/Beer Dispenser Features

- Freezer equipped with automatic hot gas defrost for maintenance-free defrosting
- Freezer zone includes (2) full-extension pull-out shelves (drawer models excluded)
- Refrigerator zone includes two (2) full-extension pull-out shelves (drawer models excluded)
- Freezer zone temperature -10° - 10°F (factory set at 0°F)
- Refrigerator zone temperature 30° - 42°F (factory set at 38°F)



INNOVATION YOU CAN'T LIVE WITHOUT

8300 W. Good Hope Rd. • Milwaukee, WI 53223
1-800-558-5592 • Fax: (414) 353-7069 • perlick.com

Perlick is committed to continuous improvement. Therefore, we reserve the right to change specifications without warning.

Form No. HP48FR
Rev. 07.09.2012

Product Specifications

Overall Width	47-7/8" (121.60 cm.)
Overall Height	34-1/4" (86.96 cm.)
Overall Depth	24" (60.96 cm.)
Opening Width	48" (121.92 cm.)
Opening Height	34-3/8" (87.31 cm.)
Opening Depth	24" (60.96 cm.)
Refrigerated Volume	11.0 cu. ft.
Compartment 1 (left)	5.0 cu. ft.
Compartment 2 (right)	6.0 cu. ft.
Door Swing Clearance	25" (63.50 cm.) minimum
Electrical	115V, 60Hz, 1 Phase, 2.3 amps
Plumbing	None Required
Annual Energy Usage	448 kWh/yr
Shipping Weight	332 lbs (150.60 kg.)

Available Models - 48" Freezer/Refrigerator

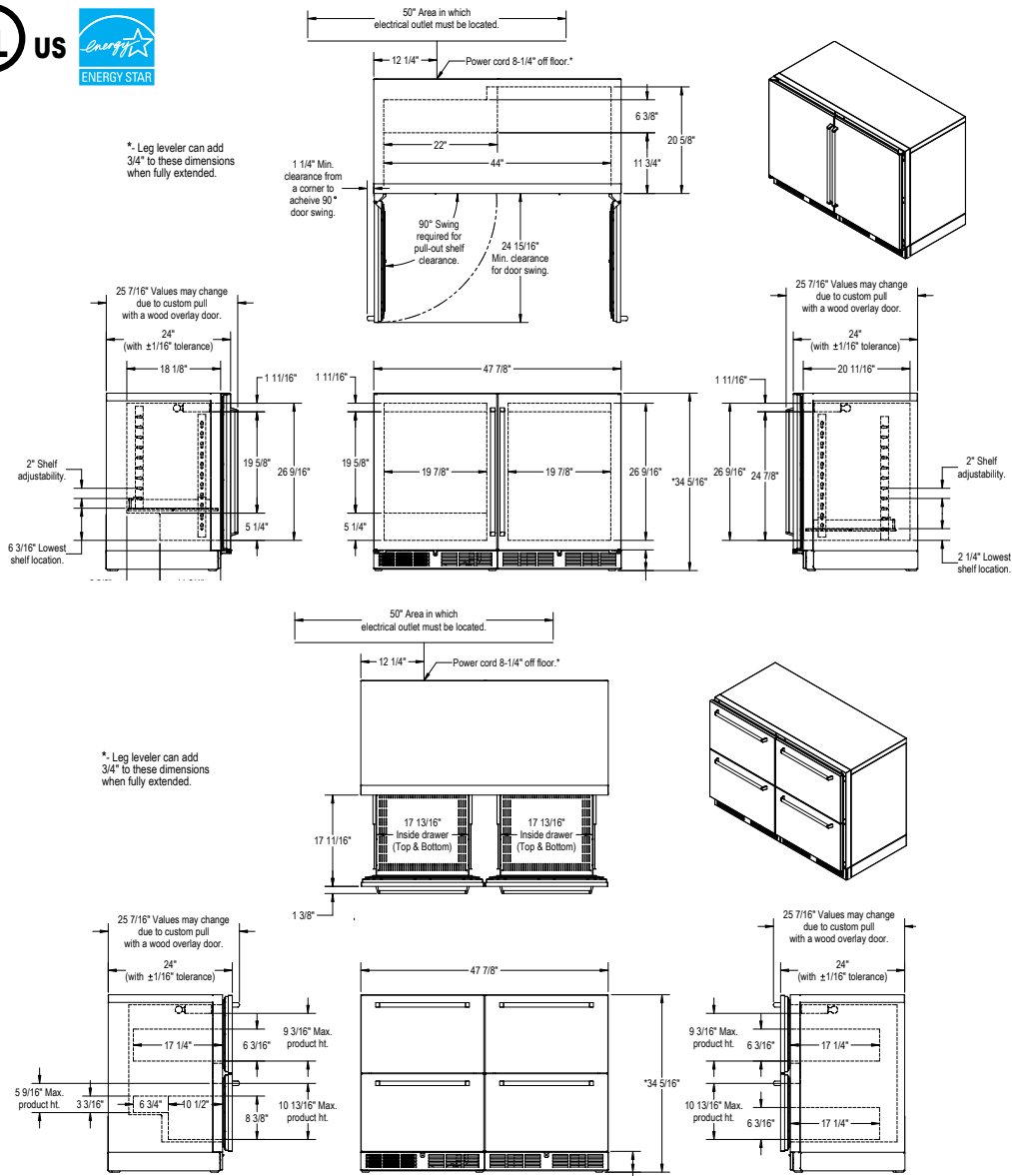
HP48FR-S	48" Freezer/Refrigerator
----------	--------------------------

Freezer Door Options

- 1 Solid Stainless Door (left or right hinge)
- 2 Solid Wood Overlay Door (left or right hinge)
- 5 Solid Stainless Steel Drawers
- 6 Wood Overlay Drawers

Refrigerator Door Options

- 1 Solid Stainless Door (left or right hinge)
- 2 Solid Wood Overlay Door (left or right hinge)
- 3 Stainless Glass Door (left or right hinge)
- 4 Wood Overlay Glass Door (left or right hinge)
- 5 Solid Stainless Steel Drawers
- 6 Wood Overlay Drawers



Form No.HP48FR
Rev. 07.09.2012



8300 W. Good Hope Rd. • Milwaukee, WI 53223
1-800-558-5592 • Fax: (414) 353-7069 • perlick.com

Perlick is committed to continuous improvement. Therefore, we reserve the right to change specifications without warning.