



QUALITY & INNOVATION  
THAT **INSPIRES**

# Signature Series Sottile Capacity

You'll be surprised what you can fit in just 3.1 cu. ft. of space



Refrigerator (RS)

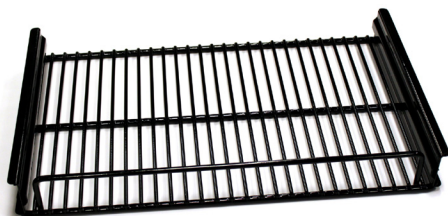


Beverage Center (BS)



Wine Reserve (WS)

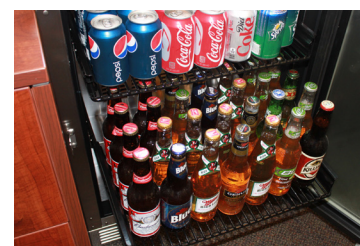
Perlick's **industry exclusive Signature Series Sottile** offers refrigeration for spaces that cannot accommodate a traditional 24" deep unit. Although it **measures just 18" deep**, it has ample storage for your favorite snacks, canned/bottled beverages and wine.



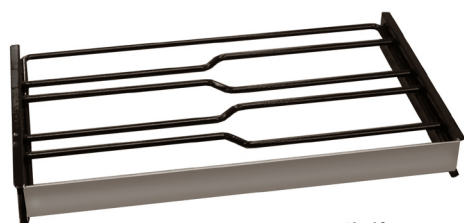
Refrigerator Shelf



Each refrigerator shelf holds 27 cans (based on standard 8 oz. cans)



Refrigerator shelf can hold up to 28 bottles (based on standard 12 oz. bottles)



Wine Shelf



Wine shelf can hold five (5) bottles (based on standard 3-inch, 750 ml. bottles)



Floor can hold up to additional 14 cans (based on standard 8 oz. cans)

Model	Refrigerator Shelf	Wine Shelf	Capacity
<b>Refrigerator</b> (HH24RS-3)	2	-	41 cans + 28 bottles*
<b>Beverage Center</b> (HH24BS-3)	1	2	10 wine bottles + 41 cans*
<b>Wine Reserve</b> (HH24WS-3)	-	4	20 wine bottles*

\* Please note that these capacities are approximate. They are based on standard size product as noted above.