

Reheat leftovers. Keep food warm.  
Make perfect popcorn. And look  
great doing it.



#### **Built-In Microwave**

Microwaves aren't just for popcorn. The built-in microwave features 10 power levels, sensor cooking with 18 presets, a large cavity and 1200 watts of cooking power.

#### **Integrated liftDoor™**

The Siemens liftDoor™ integrates the look of your Siemens microwave with your Siemens iSlide™ built-in oven and warming drawer. It's a simple, elegant solution. Exactly what you'd expect from us.

#### **Built-In Convection Warming Drawer**

Large capacity convection warming drawer distributes heat evenly with a ceramic glass surface. Touch control makes access to modes simple. A timer with auto shutoff lets you keep your mind on your cooking. And low, open sides make access to heavy plates easy.

#### **Over-the-Range Microwave/Ventilation**

This combination microwave/ventilation unit is designed to fit above Siemens xTronic® ranges. It features 1000 watts of cooking power, 10 power levels, sensor cooking, multiple presets, a powerful 300 cfm motor and a built-in cooktop light.

#### **German Engineering**

Every detail of a Siemens avantGarde® appliance is engineered for long-lasting durability. No wonder Siemens is the number one brand of built-in appliances in Europe.



avantGarde® Microwaves and  
Warming Drawer

The future moving in.

**SIEMENS**

# avantGarde® Microwaves and Warming Drawer Specifications



Integrated liftDoor™



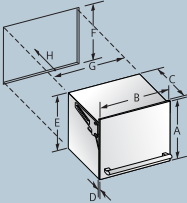
Built-In 30" Microwave



Over-the-Range Ventilation/  
Microwave

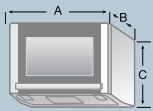


Warming Drawer



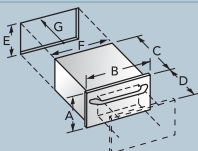
### liftDoor™/30" Microwave Dimensions

A	21-7/8"	E	21-1/8"
B	29-3/4"	F	21-1/4"
C	21-5/8"	G	28-7/16"
D	15/16"	H	21-11/16"



### Microwave Dimensions

A	29-15/16"	C	16-7/16"
B	15-5/8"		



### Warming Drawer Dimensions

A	11-1/4"	E	10"
B	29-3/4"	F	28-1/2"
C	22-3/4"	G	24"
D	22"		

	Built-In 30" Microwave	Built-In 30" Convection Warming Drawer	Built-In 36" Combination Ventilation/Microwave
	Black HF35M630*	Stainless Steel HW300500	Stainless Steel HF36V305
<b>Performance</b>			
Convection		■	
Power	1200W	600W Glass Ceramic 400W Convection	1000W
Power Levels	10	Plates, Low, Med, High	10
Technology	Inverter		
Ball Bearing Drawer Guides		■	
Ventilation			■
<b>Convenience</b>			
Capacity (cu. ft.)	2.1	2.0	1.8
Recessed Glass Turntable	15"		12"
Touch Control	■	■	■
Sensor Cook	18 Recipes		■
Quick Defrost	■		■
Smart Sensor Reheat	■		■
Auto Reheat Beverages	■		■
Sensor Popcorn	■		■
Keep Warm	■		■
Amber Display	■		■
Clock	■		■
Kitchen Timer	■		■
Delay Start	■		■
Quick Min.	■		■
More/Less	■		■
Pause/Stop	■		■
Timer with Auto Shutoff		■	
Sabbath Mode		■	
Easy-Access Low and Open Side Walls		■	
Moisture Selector		■	
Built-In Cooktop Light (Night, Bright, Off)			■
<b>Design</b>			
Integrated liftDoor™ (HZ15L56OUC) (Sold Separately, Matches Siemens Built-In Oven and Warming Drawer)	■		
<b>Technical</b>			
Ventilation cfm			300
120 Volts, 60 Hz	■	■	■
Amps	20	15	13

1-888-4-SIEMENS • In the US: [siemens-home.com](http://siemens-home.com)

©2007 BSH Home Appliances Corporation. All rights reserved. Specifications subject to change without notice.

\*Microwave HF35M630 must be installed in conjunction with liftDoor™ HZ15L560OUC.

Microwaves and warming drawer are UL approved. For immediate critical installation dimensions by fax, use your handset and call 775-833-3600. Warranty: BSH warrants that its microwave and warming drawer products are free from defects in materials and workmanship for a period of 1 year for labor and 1 year for parts. Certain limitations apply. See Manufacturer's Limited Warranty for details. SE\_PH\_MPC\_1\_004