

Version	FDALB48C6WH-R Ceiling 48" (120 cm) - White
Design	Saggia - Sommella
Collection	Design

FEATURES AND PROPERTIES

Materials/Finishes	Tempered glass
Technology	SRS Speed reduction system
Features	Perimeter suction Perimeter LED Lighting Possibility of painting the panel
Control	Electronic control Remote control included
Ducting type	External ducting/Recirculating
Installation type	Ceiling
Lighting	LED (4000 K)
Filters	Metallic grease filter, removable and washable
Motor	Motor sold separately
Dimensions	48 in
Notes	Recommended mounting maximum distance from cooking surface to hood bottom: 150cm (59")



Photograph is for information purposes only. May not correspond to the selected version

ELECTRICAL CONNECTION AND CONSUMPTION

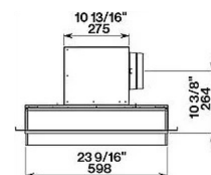
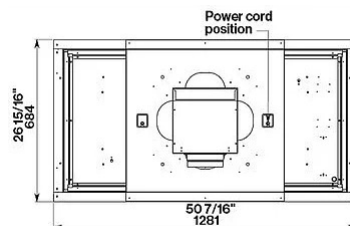
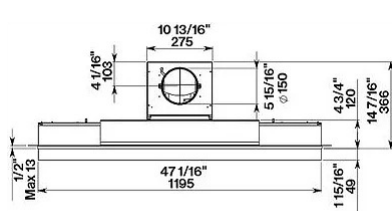
Maximum consumption	340 W
Voltage/Frequency	110-120V 60Hz
Connection type	Hood comes standard with Nema 5-15P power cord

BLOWER PERFORMANCE

Motor	Motor sold separately FDNUMVTR600 - Motor 600 CFM for North America
Minimum sound level	0 dB (A)re1pW I.E.C. 60704-2-13
Maximum sound level	0 dB (A)re1pW I.E.C. 60704-2-13

WEIGHTS AND DIMENSIONS

Gross weight	116 lbs
Net weight	100 lbs
Volume	14 ft
Packaging dimensions	L 55 x H 13 x D35 in



Frontal view

Top view

Side view

OPTIONAL ACCESSORIES

Code	Description
KACL.931	Carbon.Zeo filter spare part (vertical outlet)
KACL.928	Carbon.Zeo filter spare part (horizontal outlet)
KACL.798#21F	FDMUVMTR600 - Motor 600 CFM for North America
KACL.953#BF	Carbon.Zeo filter unit kit for ceiling (vertical outlet)