



# FRIGIDAIRE

## Factory Parts Catalog

Product No.	FFTR2045VB0	FFTR2045VD0	FFTR2045VS0	FFTR2045VW0
<b>Series</b>	Bronco	Bronco	Bronco	Bronco
<b>Color</b>	black	black stainless	stainless	white
<b>Volts</b>	115	115	115	115
<b>Wiring Diagram</b>	A15972401	A15972401	A15972401	A15972401
<b>Owner's Guide</b>	A13110302	A13110302	A13110302	A13110302
<b>Market</b>	North America	North America	North America	North America
<b>Energy Guide</b>	A10298756	A10298756	A10298756	A10298756
<b>Service Data Sheet</b>	A16330301	A16330301	A16330301	A16330301
<b>Installation Instructions</b>	A14328801	A14328801	A14328801	A14328801
<b>Ice maker</b>	IM117000	IM117000	IM117000	IM117000

### Frigidaire

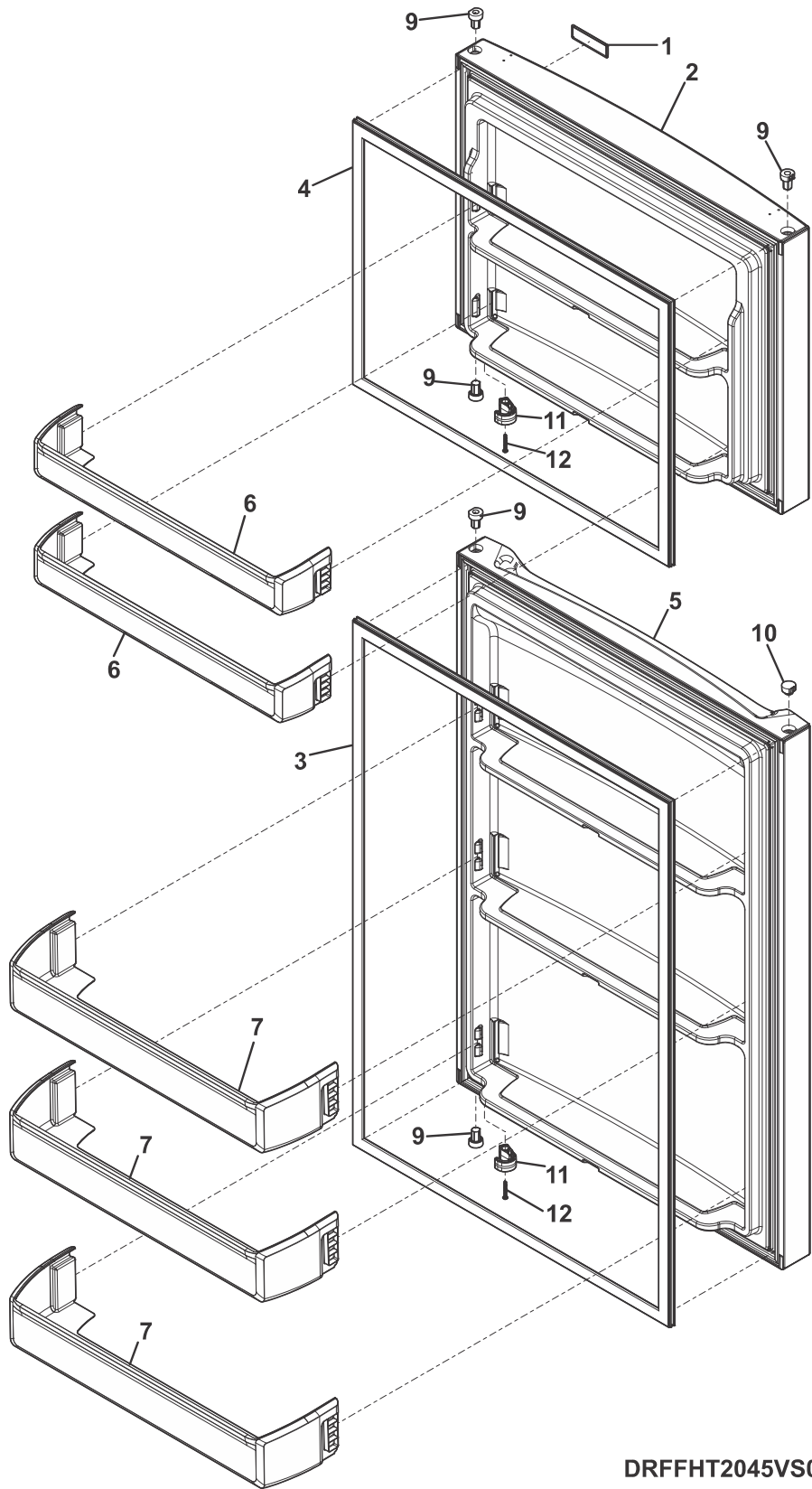
P.O. BOX 8020  
CHARLOTTE, NC 28262

### TOP-MOUNT REFRIGERATOR

Model No.  
FFTR2045V

Publication No.  
**5995719977**  
20/02/04  
(EN/SERVICE/LF)  
390

DOOR



DRFFHT2045VS0

---

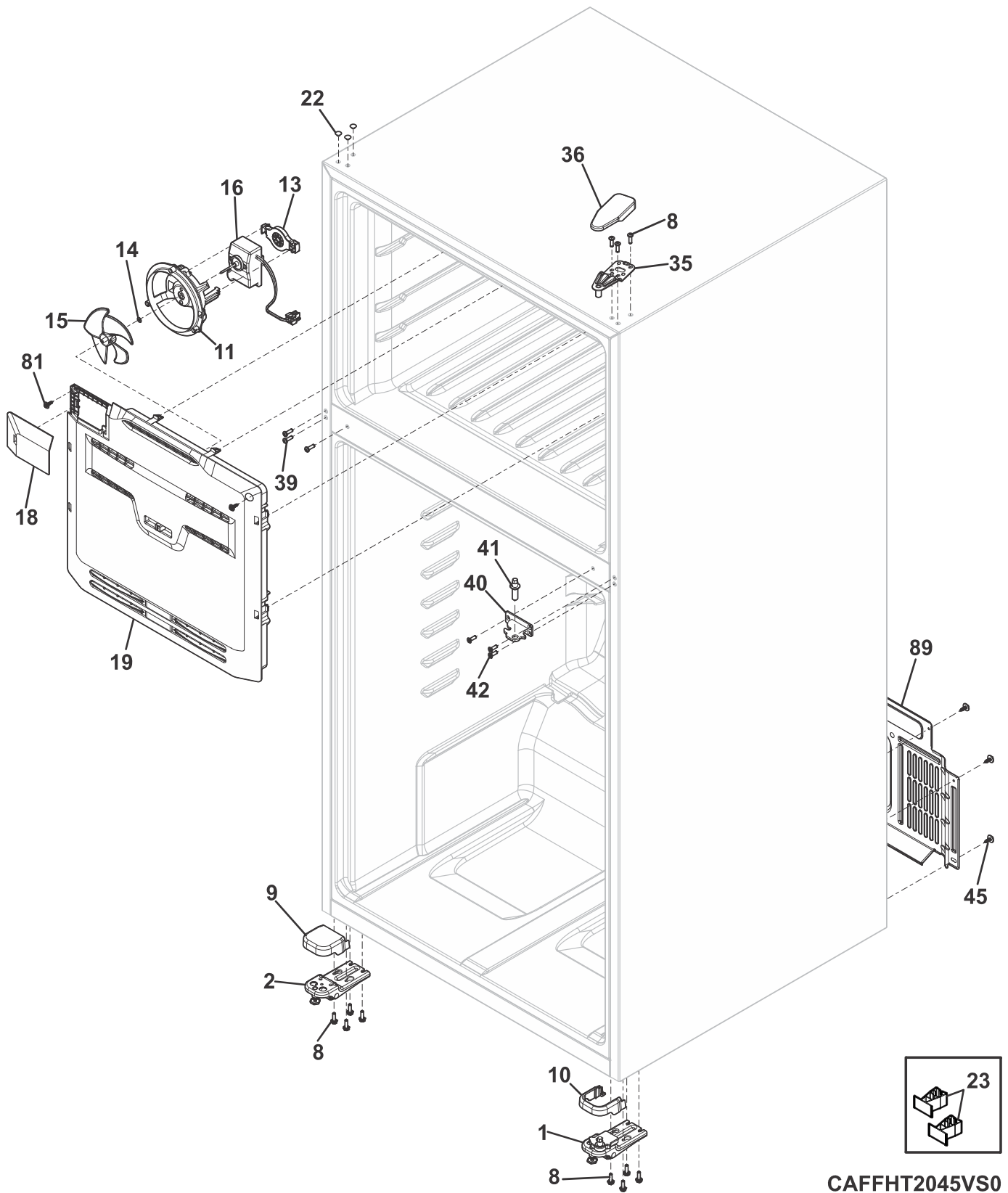
**DOOR**


---

Model Index: **A** FFTR2045V (FFTR2045VB0)  
**B** FFTR2045V (FFTR2045VD0)  
**C** FFTR2045V (FFTR2045VS0)  
**D** FFTR2045V (FFTR2045VW0)

POS. NO	PART NO.		DESCRIPTION
1	5304511145	A - - -	Badge, Frigidaire, black
1	5304510903	- B - -	Nameplate, black stainless
1	5304511146	- - C -	Badge, Frigidaire, chrome
1	5304511144	- - - D	Badge, Frigidaire, white
2	5304522117	A - - -	Door Assembly, freezer, black
2	5304524052	- B - -	Door Assembly, freezer, black stainless
2	5304522118	- - C -	Door Assembly, freezer, stainless
2	5304519700	- - - D	Door Assembly, freezer, white
3 #	5304522312	A - - -	Gasket, door, black, refrigerator
3 #	5304523138	- B C D	Gasket, door, gray, refrigerator
4 #	5304522313	A - - -	Gasket, door, black, freezer
4 #	5304523139	- B C D	Gasket, door, gray, freezer
5	5304522120	A - - -	Door Assembly, refrigerator, black
5	5304524053	- B - -	Door Assembly, refrigerator, stainless
5	5304522121	- - C -	Door Assembly, refrigerator, stainless
5	5304519701	- - - D	Door Assembly, refrigerator, white
6	5304524054	A B C D	Bin, door, white, freezer
7	5304524055	A B C D	Bin, door, 6", refrigerator
9	5304522193	A B - -	Bearing, hinge, black
9	5304522194	- - C -	Bearing, hinge, gray
9	5304519757	- - - D	Bearing, hinge, white
10	5304522186	A - - -	Cover, hinge bearing, black
10	5304522187	- B C -	Cover, hinge bearing, gray
10	5304519747	- - - D	Cover, hinge bearing, white
11	5304522237	A B - -	Hook, door closer, black
11	5304522238	- - C -	Hook, door closer, gray
11	5304519789	- - - D	Hook, door closer, white
12	241953905	A B C D	Screw, 8-18 X 1.25

**CABINET**

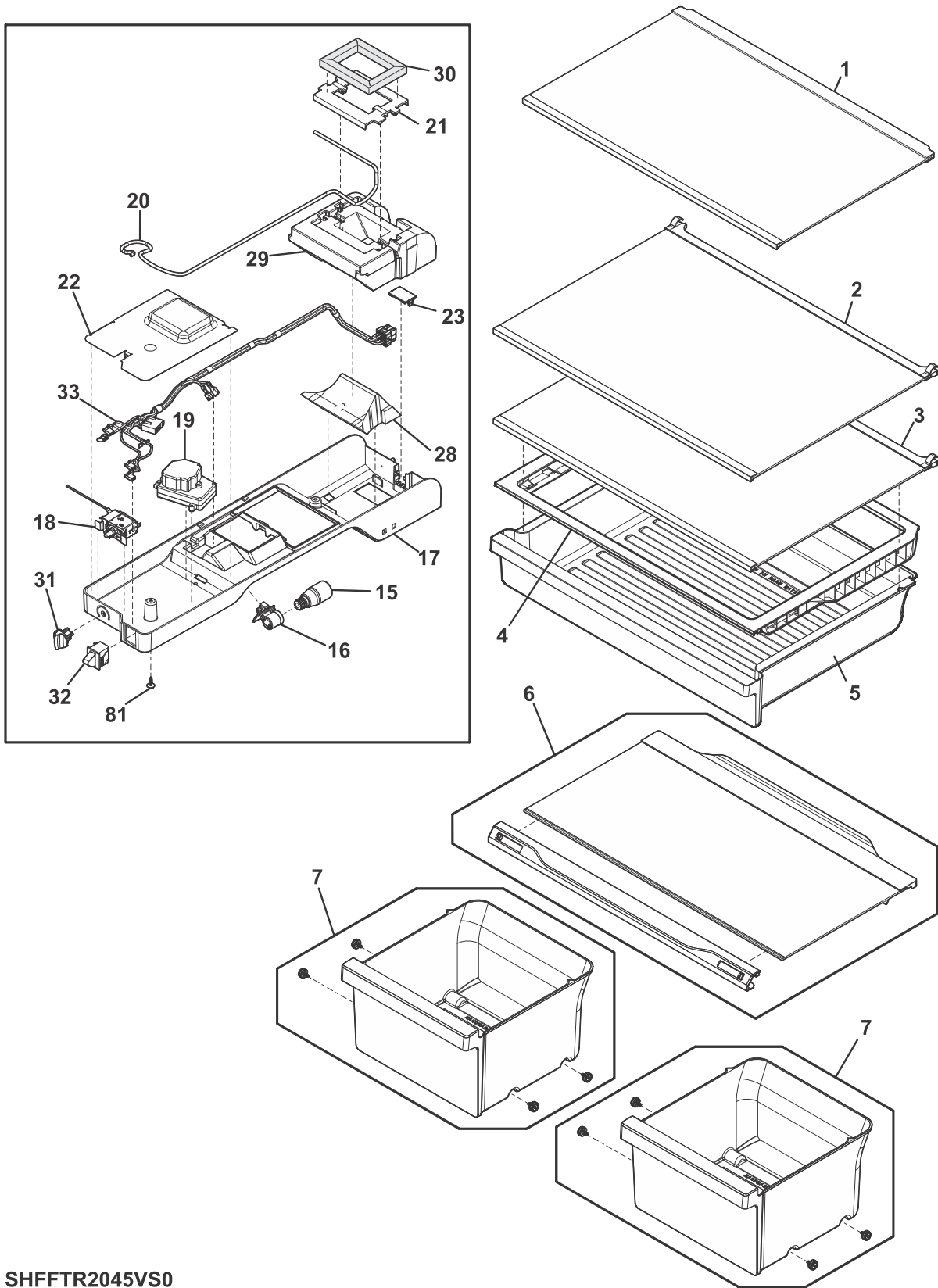


**CABINET**

Model Index: **A** FFTR2045V (FFTR2045VB0)  
**B** FFTR2045V (FFTR2045VD0)  
**C** FFTR2045V (FFTR2045VS0)  
**D** FFTR2045V (FFTR2045VW0)

POS. NO	PART NO.		DESCRIPTION
1	5304522218	A B - -	Hinge Assembly, bottom, black, RH, w/pin-closer
1	5304522219	- - C -	Hinge Assembly, bottom, RH, w/pin-closer
1	5304519775	- - - D	Hinge Assembly, bottom, white, RH, w/pin-closer
2	5304519776	A B C D	Hinge Assembly, bottom, LH
8	5304522279	A B C D	Screw, hex wsh hd quad, M5 x 16
9	5304522220	A - - -	Cover, hinge, black, lower, non hinged
9	5304522221	- B C -	Cover, hinge, gray, lower, non-hinged
9	5304519777	- - - D	Cover, hinge, white, lower, non hinged
10	5304522245	A - - -	Cover, hinge side, black, lower
10	5304522246	- B C -	Cover, hinge side, gray, lower
10	5304522244	- - - D	Cover, hinge side, white, lower
11	5304519752	A B C D	Shroud, evaporator fan
13	242287501	A B C D	Grommet, evaporator fan, rear
14	215474201	A B C D	Washer, "slinger", nylon, evap fan shaft
15	242219302	A B C D	Fan Blade, evaporator
16 #	242077704	A B C D	Motor, evaporator fan, blower
18	5304519662	A B C D	Cover, I/M Connector
19	5304519654	A B C D	Cover Assembly, evaporator, w/frz slide
22	215774918	A - - -	Plug, button, black, upr hinge holes
22	215774922	- B C -	Plug, button, gray, upr hinge holes
22	215774901	- - - D	Plug, button, white, upr hinge holes
23	5304523302	A B C D	Clip, wiring harness
35	5304519646	A B C D	Hinge, door, upper
36	5304520521	A - - -	Cover, upper hinge, black
36	5304520516	- B C -	Cover, upper hinge, gray
36	5304519784	- - - D	Cover, upper hinge, white
39	5304522252	A - - -	Screw, pan hd qdrx tri, M5 x 12, black
39	5304519797	- B - D	Screw, pan hd qdrx tri, M5 x 12, chrome
39	5304522253	- - C -	Screw, pan hd qdrx tri, M5 x 12
40	5304522099	A - - -	Hinge, door, black, center
40	5304522100	- B C -	Hinge, door, gray, center
40	5304519647	- - - D	Hinge, door, white, center
41	5304519642	A B C D	Pin, center hinge, door
42	5304522282	A B C D	Screw, fit hd qdrx, M5 x 16, gray
45	241500304	A B C D	Screw, hex washer head, 8-18AB x 0.625
81	5304519765	A B C D	Screw, hx wash hd, M4.2 x 12
89	5304522114	A B C D	Access Cover, rear

**SHELVES**



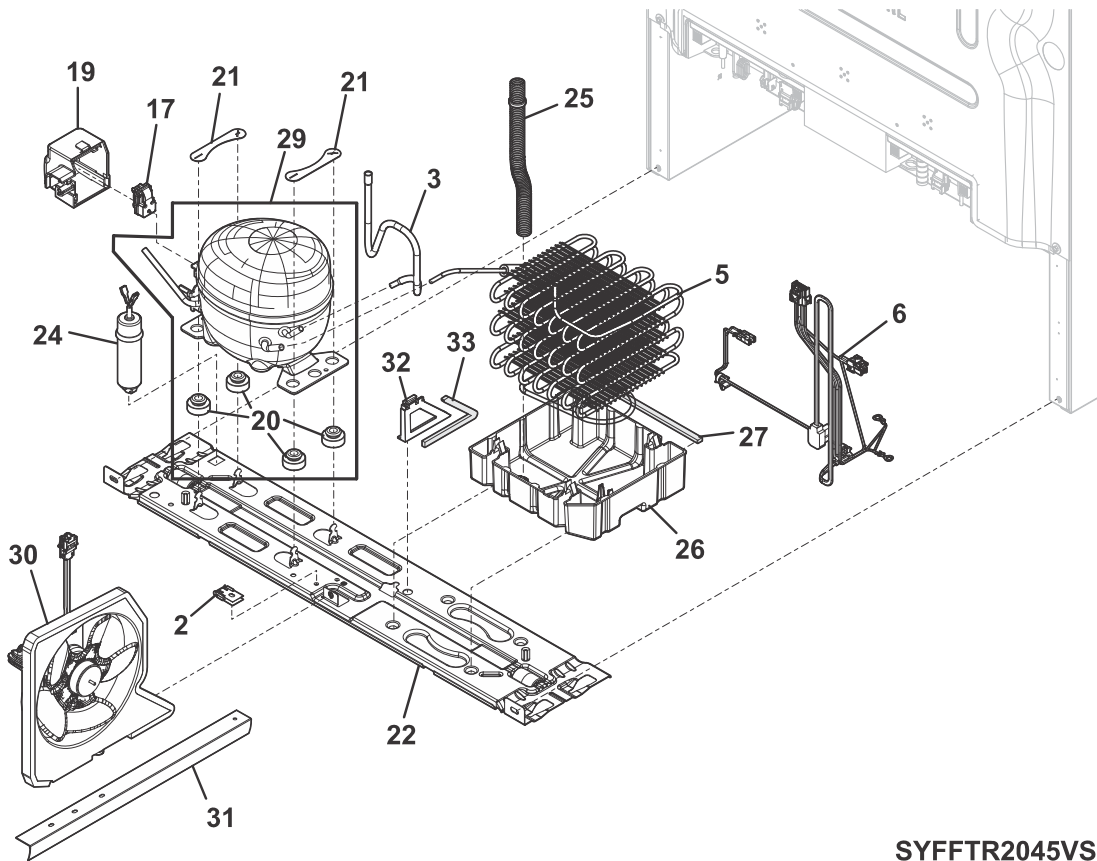
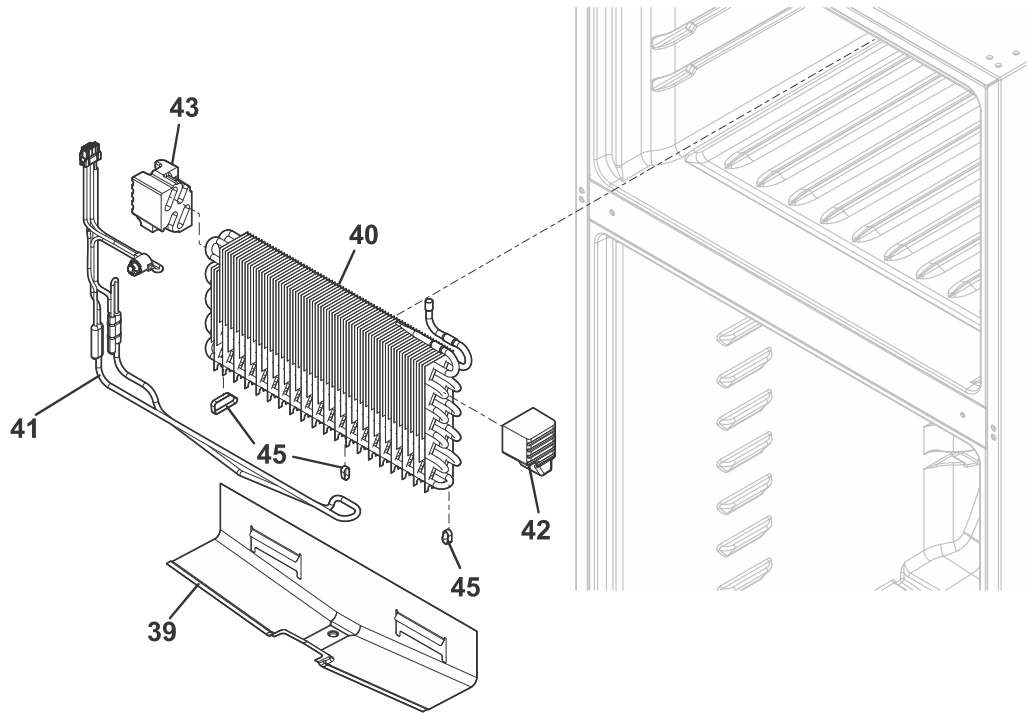
SHFFTR2045VS0

**SHELVES**

Model Index: **A** FFTR2045V (FFTR2045VB0)  
**B** FFTR2045V (FFTR2045VD0)  
**C** FFTR2045V (FFTR2045VS0)  
**D** FFTR2045V (FFTR2045VW0)

POS. NO	PART NO.		DESCRIPTION
1	5304524025	A B C D	Shelf Assembly, freezer, glass, w/trim
2	5304524073	A B C D	Shelf Assembly, refrigerator, glass, w/trim
3	5304524091	A B C D	Shelf Assembly, refrigerator, glass, deli drawer, w/trim
4	5304524136	A B C D	Carriage, deli drawer, fill width
5	5304524137	A B C D	Drawer, deli, full width
6	5304519729	A B C D	Cover Assembly, crisper, glass, w/trim
7	5304522242	A B C D	Pan Assembly, crisper, w/rollers
15	5304522314	A B C D	BULB, light, E17/12 LED
16 #	5304522315	A B C D	Socket, LED light
17	5304524317	A B C D	Housing, control box
18	5304522330	A B C D	Cold Control, assembly, w/capillary
19	5304522331	A B C D	Timer, defrost
20	5304522332	A B C D	Tubing, capillary, plastic
21	5304522333	A B C D	Plate, diffuser
22	5304522334	A B C D	Shield, electrical, front
23	5304522335	A B C D	Shield, electrical, rear
28	5304522317	A B C D	Diffuser, control box, bottom
29	5304522336	A B C D	Diffuser, control box, top
30	5304520493	A B C D	Seal, air duct, top
31	5304522337	A B C D	Knob, control
32 #	5304520495	A B C D	Switch, door/light, white
33 #	5304522338	A B C D	Harness, wiring, control box
81	5304519765	A B C D	Screw, hx wash hd, M4.2 x 12

**SYSTEM**



**SYFFTR2045VS0**



## SYSTEM

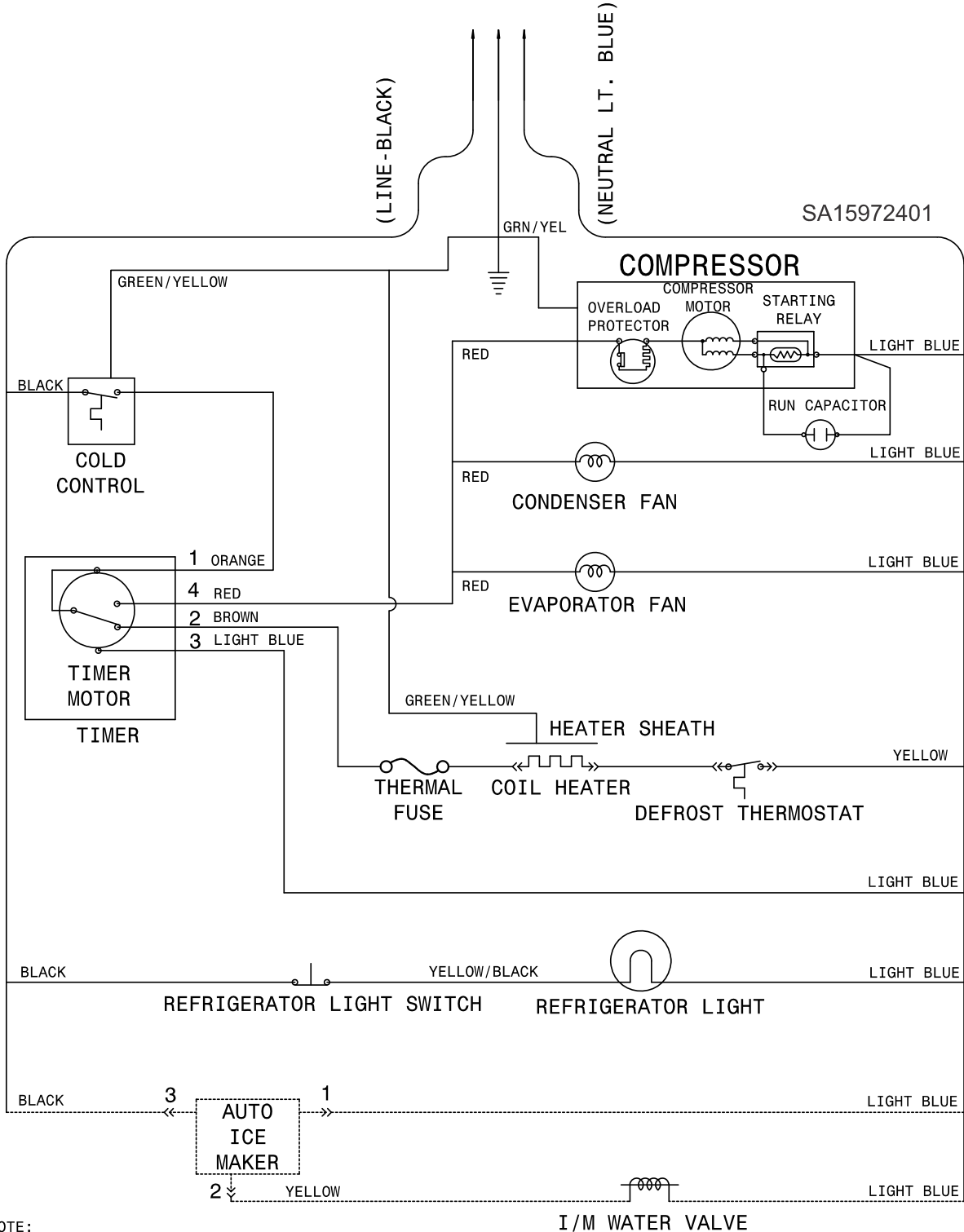
---

Model Index: **A** FFTR2045V (FFTR2045VB0)  
**B** FFTR2045V (FFTR2045VD0)  
**C** FFTR2045V (FFTR2045VS0)  
**D** FFTR2045V (FFTR2045VW0)

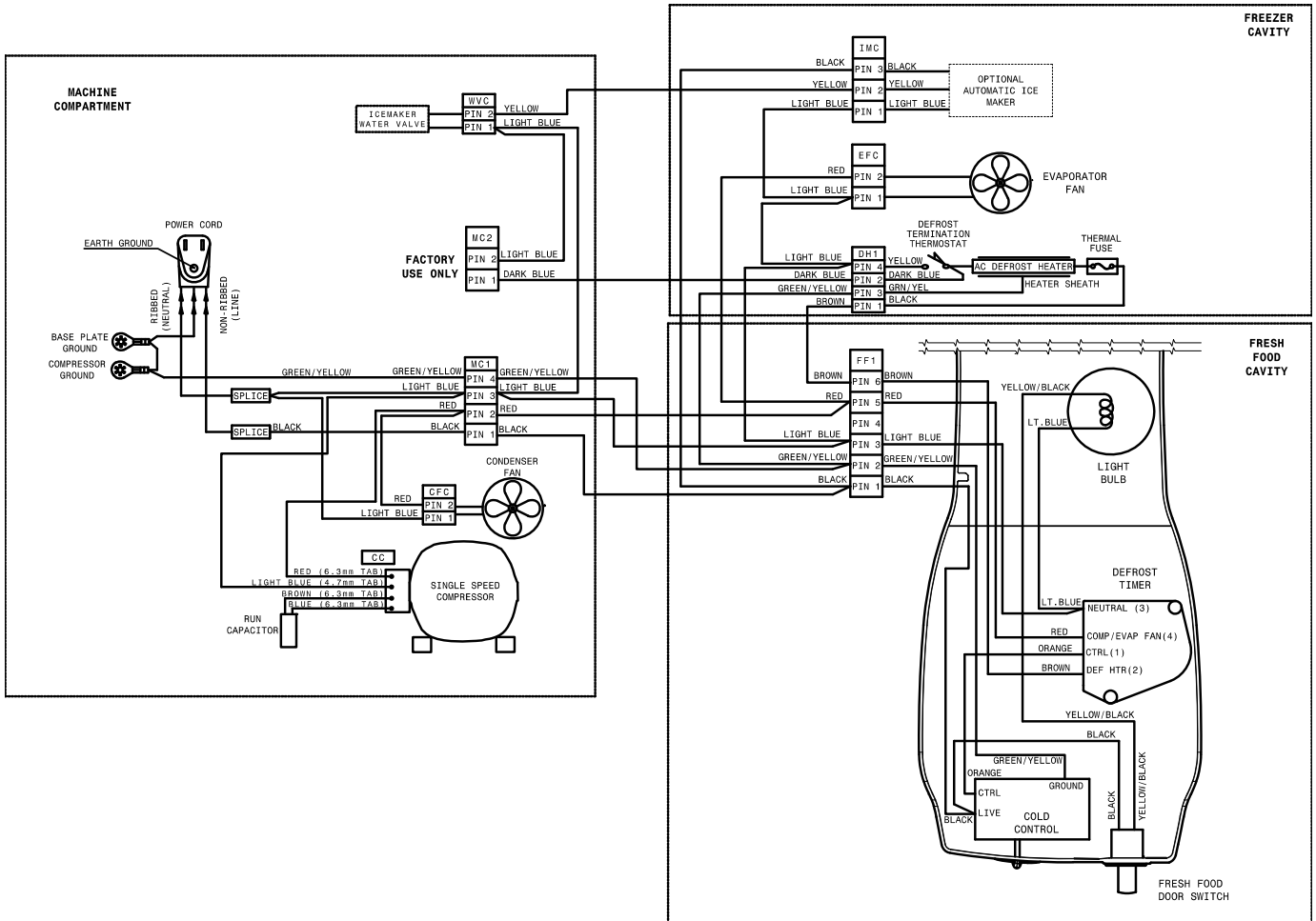
POS. NO	PART NO.		DESCRIPTION
2	5304456288	A B C D	Clamp, wiring harness, galv steel, strn relief
3 #	5304522111	A B C D	Tube, suction jumper
5 #	5304519669	A B C D	Condenser, dynamic
6 #	5304519649	A B C D	Harness, wiring, machine compt.
17 #	5304522269	A B C D	Starter, compressor, TSD 2.1
19	5304522311	A B C D	Cover, electricals, compressor
20	5304522323	A B C D	Grommet, compressor
21	811998601	A B C D	Clamp, compressor, 2 hole
22	5304519667	A B C D	Base Assembly, compressor, w/rollers
24 #	5304522105	A B C D	Capacitor, run, 12uF
25	5304519743	A B C D	Tube, drain extension
26	5304519674	A B C D	Pan, drain
27	5304519750	A B C D	Seal, foam, drain pan
29	5304524169	A B C D	Compressor, assembly
30 #	5304519734	A B C D	Fan Assembly, condenser, w/shroud-foam
31	5304524032	A B C D	Baffle, divider, high side
32	5304519745	A B C D	Baffle, drain pan, air block
33	5304519751	A B C D	Seal, foam, air block
39	5304519679	A B C D	Trough, evap drain
40 #	5304522324	A B C D	Evaporator, assembly
41 #	5304522340	A B C D	Heater, evap defrost, w/thermostat
42	5304522326	A B C D	Support, evaporator, RH
43	5304522327	A B C D	Support, evaporator, LH
45	5308000110	A B C D	Strap-evap/heater, aluminum, (2)
*	240433204	A B C D	Screw, hex washer head, 8-18 x 5/16
*	241500304	A B C D	Screw, hex washer head, 8-18AB x 0.625

**WIRING SCHEMATIC**

**LADDER SCHEMATIC-TOP MOUNTS WITH MECHANICAL COLD CONTROL AND OPTIONAL ICE MAKER**



**WIRING DIAGRAM**



WA15972401

ABBREVIATION	EXPLANATION
MC1	4 PIN CONNECTION ABOVE COMPRESSOR IN MACHINE COMPARTMENT
MC2	2 PIN CONNECTOR ABOVE COMPRESSOR (FACTORY USE ONLY)
FF1	6 PIN CONNECTION IN CONTROL BOX
CC	4 TERMINAL CONNECTIONS TO COMPRESSOR
CFC	2 PIN CONNECTION TO CONDENSER FAN
WVC	2 PIN CONNECTION TO ICE MAKER WATER VALVE
IMC	3 PIN ICE MAKER CONNECTION IN FREEZER
EFC	2 PIN EVAPORATOR FAN CONNECTION IN FREEZER
DH1	4 PIN DEFROST HEATER CONNECTION IN FREEZER BEHIND COIL COVER

