



FRIGIDAIRE

Factory Parts Catalog

Product No.	FFHG2250TD0
Series	Frigidaire
Color	black stainless
Volts	115
Wiring Diagram	A06742201
Owner's Guide	A05947001
Market	North America
Energy Guide	A02090790
Service Data Sheet	A06686901

Frigidaire

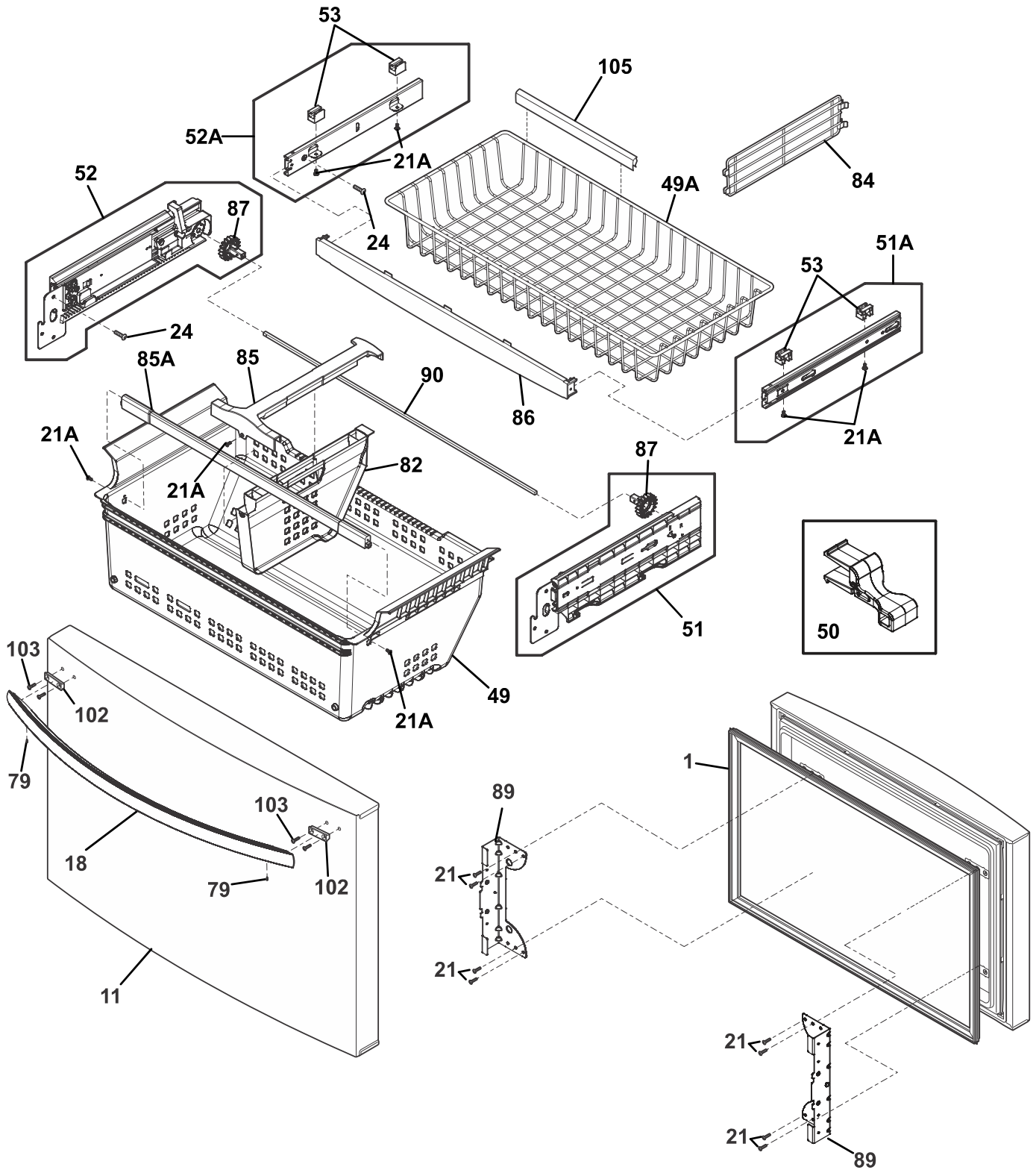
P.O. BOX 8020
CHARLOTTE, NC 28262

Publication No.
5995688156
17/06/13
(EN/SERVICE/CW)
137

FRENCH DOOR BOTTOM FREEZER/REFRIGERATOR W/O DISPENSER

Model No.
FFHG2250T

FREEZER DRAWER, BASKETS

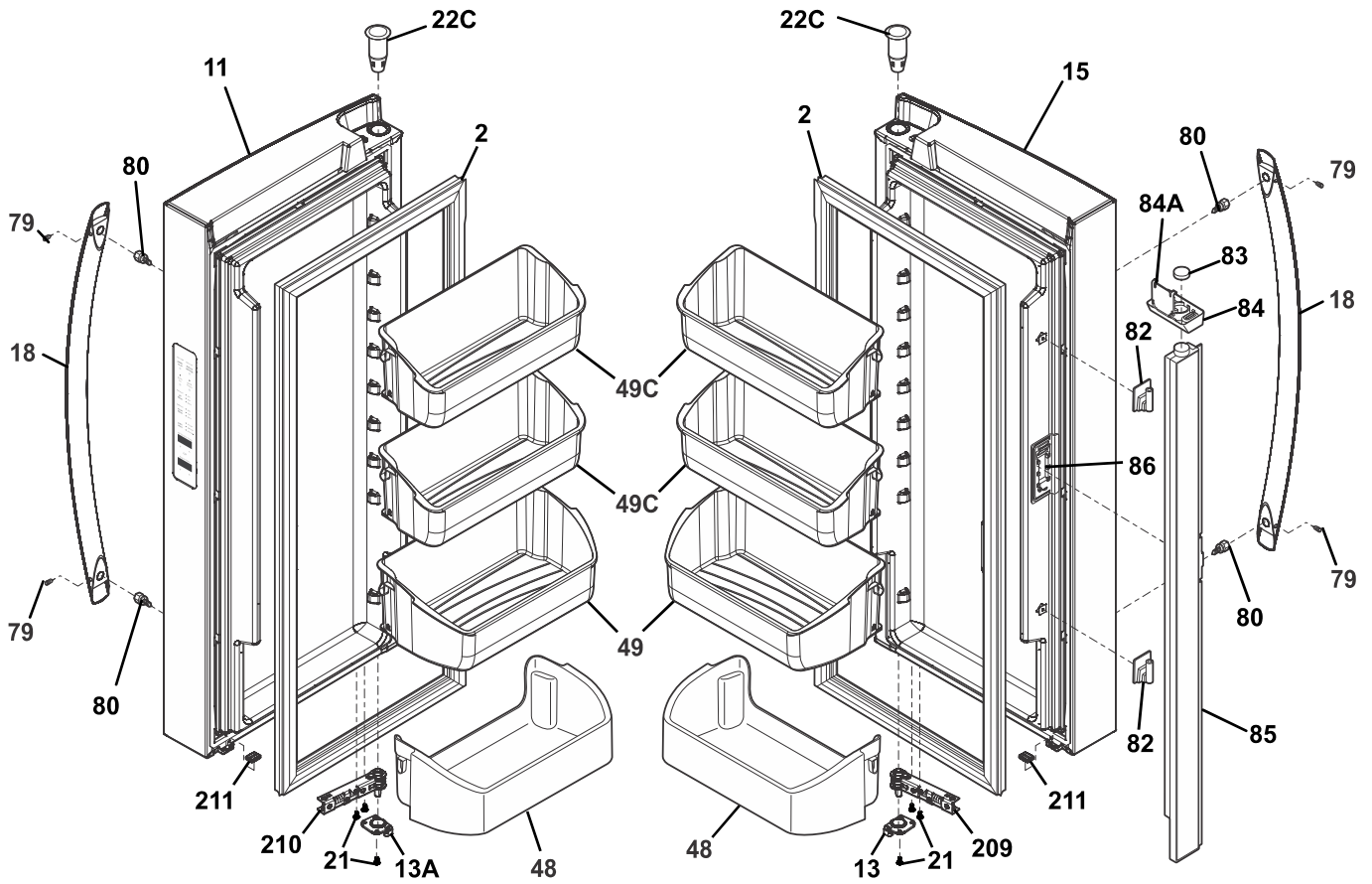


FDFH2250TS0

FREEZER DRAWER, BASKETS

POS. NO	PART NO.	DESCRIPTION
1 #	5304502762	Gasket-frzr drawer, black, magnetic
11	241987959	Drawer, black stainless, freezer
18	5304510336	Handle-door, black stainless
21	241690602	Screw, quadrex, #10-16 Hilo
21A	241953902	Screw, quad hilo, #8-18 X 0.380
24	240383412	Screw, truss hd quad, #10-16 x .750, zinc
49	5304508740	Basket, freezer drawer, lower
49A	241780811	Basket-frzr, upper
50	5304501271	Clip, freezer basket
51	5304507977	Slide Assembly, basket lower, RH, w/pinion
51*	242039702	Screw, shoulder, #10-16, (2)
51A	5304508094	Slide Assembly, freezer basket, upper RH
51A*	242039701	Screw, basket slides
52	5304507976	Slide Assembly, basket lower, LH, w/pinion
52A	5304508095	Slide Assembly, freezer basket, upper LH
53	5304508271	Retainer, basket, upper
79	218755407	Screw-set, 10-32 x 0.500
79*	5304508270	Wrench, allen, set screw
82	5304507996	Divider, lower basket
84	241780905	Divider, basket
85	242139401	Divider, basket, lower
85*	242139201	Spring-compression, divider, lower basket
85A	242139301	Support-Beam, divider, lower basket
86	5304507340	Trim, drawer, stabilizer
86*	242011101	Pin-lock
87	5304507999	Pinion
89	5304509676	Bracket, freezer drawer, (2)
90	241770702	Bar, timing
102	5304504279	Block-handle mtg
103	242077302	Screw, #10 AB flat hd
105	242116801	Trim-basket
*	242146401	Screw, ser hex wash hd, 1/4-20 x 5/8, (4)

FRESH FOOD DOOR

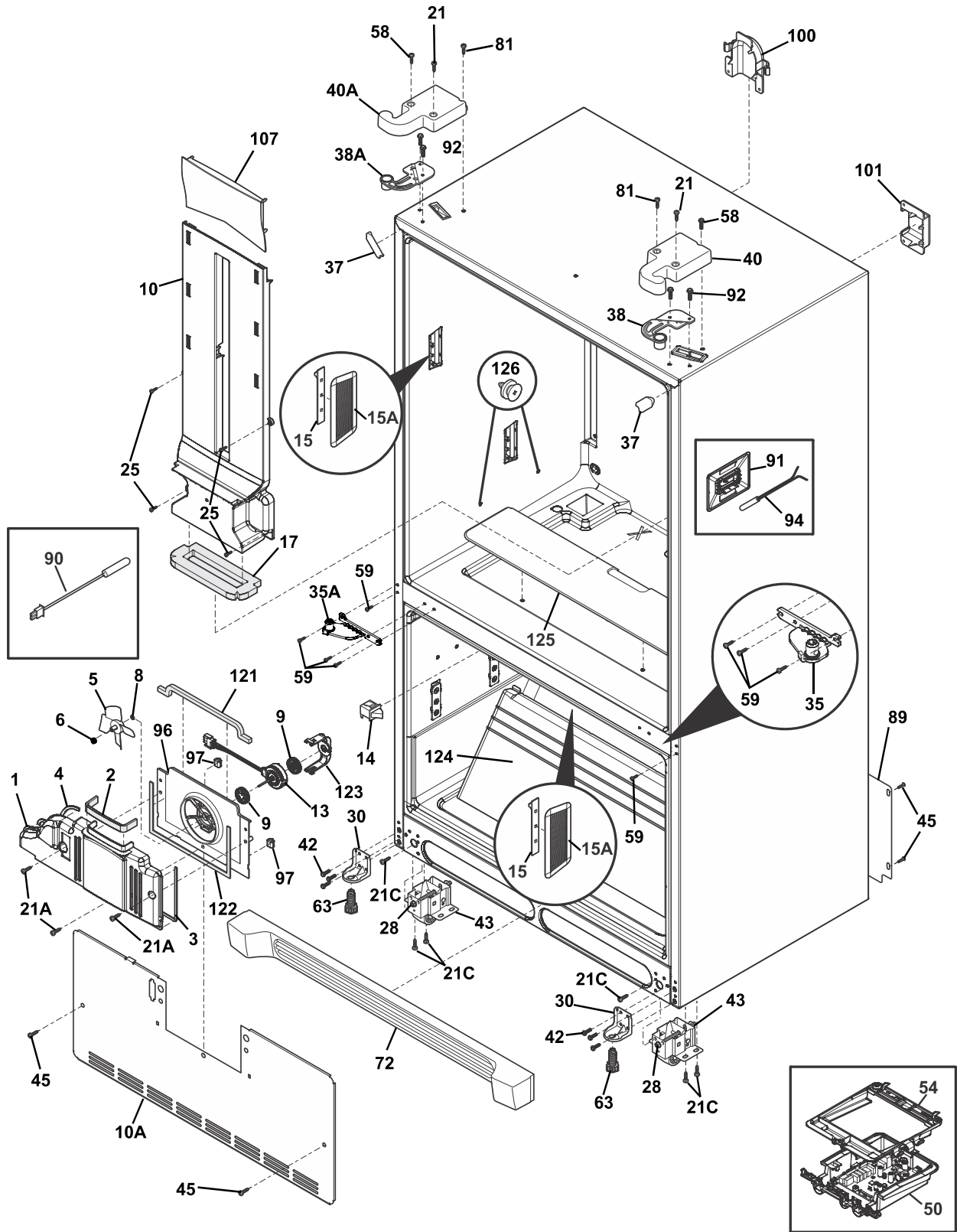


FFFFHG2250TS0

FRESH FOOD DOOR

POS. NO	PART NO.	DESCRIPTION
2 #	241778303	Gasket-refr door, black, magnetic
11	807460164	Refrigerator Door, complete, black stainless
11*#	242045402	Harness-wiring, door
13	5304508039	Door Stop, assembly, RH, w/bushing
13A	5304508038	Door Stop, assembly, LH, w/bushing
15	807460163	Refrigerator Door, complete, black stainless
18	5304510340	Handle, door, black stainless
21	241953902	Screw, quad hilo, #8-18 X 0.380
22C	241760401	Bearing, hinge, top
48	242071401	Bin-door, pseudo, white
49	242079701	Bin-door, gallon
49C	242079901	Bin-door, 1/2 gallon
79	218755407	Screw-set, 10-32 x 0.500
79*	5304508270	Wrench, allen, set screw
80	218755504	Screw, shoulder, #10-AB, handle mounting
82	241779401	Hinge-mullion, upper/lower, flipper
83	241812202	Magnet, door
84	808274201	Guide-mullion, magnet cover, flipper
84*	5304455650	Screw, hex washer head, 8-15A x 0.625, Low Profile
84*	5304508776	Lock Washer, external tooth, #8
84A	242190501	Cover-mullion, magnet cover
85	242036302	Flipper mullion assembly, black, w/heater
85*	242015001	Screw, 8-18 X 1/2
85*	242068601	Bumper, flipper mullion
85*#	241788401	Harness-wiring, flipper mullion
86	241779801	Hinge-mullion, center, flipper
209	5304508014	Closer Assembly, door, RH, mechanical
210	5304508015	Closer Assembly, door, LH, mechanical
211	5304508077	Bumper, door, bottom
85	242036303	Flipper mullion assembly, grey, w/heater
*	240451503	Screw, ind hex wshr hd, 8-32 x 0.375, trilobe

CABINET

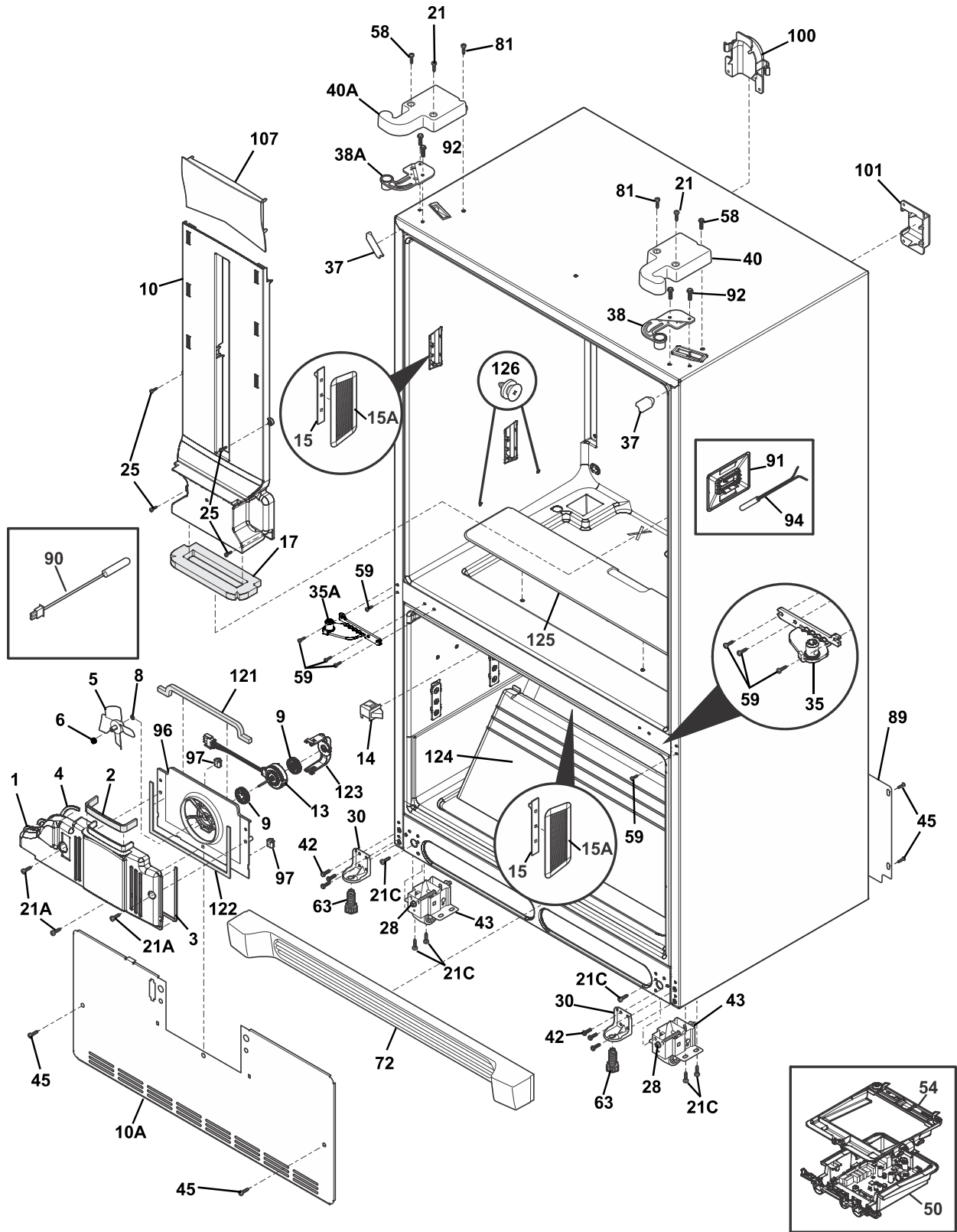


CAFGHG2366PFBA

CABINET

POS. NO	PART NO.	DESCRIPTION
1	5304503130	Cover, evaporator fan
2	218249809	Seal, fan cover, top
3	241860111	Gasket-evap, bottom
4	241860112	Gasket-evap, upper
5 #	5308000010	Fan Blade, red, evaporator fan
6	5304508010	Spring, fan hub
8	215474201	Washer, "slinger", nylon, evap fan shaft
9	5304508006	Bushing, motor mounting
10 #	5304508009	Air Tower, assembly, w/damper
10A	241860402	Cover-evap coil, lower
10A*	241860104	Gasket-coil cover
10A*	241860105	Gasket-coil cover
13 #	809069201	Motor, evaporator fan, w/harness
14 #	242060202	Switch-light/lamp, frzr door
15 #	242196204	Light Board, 3 LED cluster
15A	242202701	Lens, 3 LED cluster
17	5304508008	Gasket, air duct, bottom
21	241732101	Screw, 10-32 x 1/2
21A	242015001	Screw, 8-18 X 1/2
21C	218252201	Screw, #8 truss hd, 10-32CA x 0.500
25	240383407	Screw, truss hd quad, #10-16 x .500, white
28	240335502	Bolt-roller adj, hex washer head, 1/4-20 x 4.020, (2), special
30	241778702	Bracket-anti tip
35	5304508044	Hinge Assembly, lower, RH, w/adj screw
35A	5304508045	Hinge Assembly, lower, LH, w/adj screw
37	242161202	Trim-cabinet corner, black, (2)
38	241761301	Bracket-upper hinge, RH
38A	241761302	Bracket-upper hinge, LH
40	242099801	Cover-upper hinge, black
40A	242099804	Cover-upper hinge, black, LH
42	240578902	Screw, hex head, 1/4-20 x 5/8
43	240335005	Roller Assy, adjustable, front, (2)
45	241500303	Screw, hex washer head, 8-18AB x 1/2
50 #	5304510311	Board Assembly, main power, w/housing
54	807854301	Support, housing, main board
58	241853202	Screw
59	240442706	Screw-#10-32 X 3/4, zinc
63	216396900	Screw, leveling foot, plastic, adjustable
72	242054802	Grille/Kickplate, black
72*	241695904	Screw, type AB, #10-16 x .5
81	242025601	Screw, hex head, #10-32 x 3/8
89	241733902	Cover-access, w/label
90	240597203	Sensor, temperature, 10K, NTC
90*	241842301	Cap-thermistor
90*	241953902	Screw, quad hilo, #8-18 X 0.380
90*	241969001	Cap, screw
91	5304508041	Cover, thermistor
92	241710601	Screw, hex washer hd, 1/4 x 7/8, hinge mtg
94 #	5303918775	Thermistor, fresh food temp, NTC, w/connectors
96	241860601	Shroud-evap fan mtg
97	241860130	Gasket, fan cover clip, (2)

CABINET

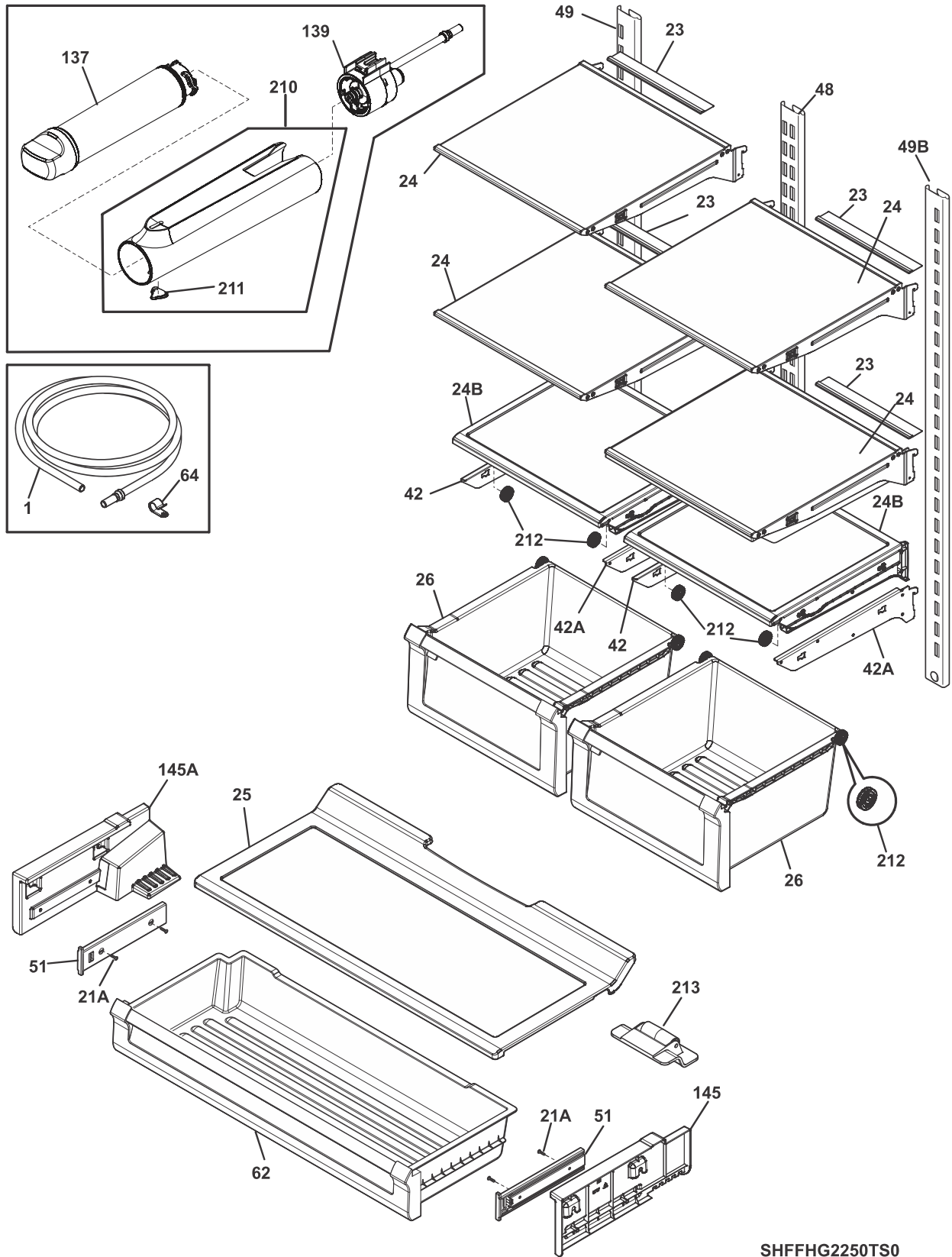


CAFGHG2366PFBA

CABINET

POS. NO	PART NO.	DESCRIPTION
100	242157601	Cover, tubing, eps block
101	242157801	Cover, tubing, eps block
107	241963107	Duct-air, top
121	241860103	Gasket-evap, upper
122	241860102	Gasket-evap, bottom
123	5304508007	Bracket, fan motor mtg.
124	242006902	Duct-air, freezer
125	242071201	Cover, sump
126	242081301	Screw-shoulder
*	218362501	Screw, hex washer head, 8-18AB x 1.250, spacer, (2)
*	218515401	Clip-grille
*	5304455650	Screw, hex washer head, 8-15A x 0.625, Low Profile

SHELVES

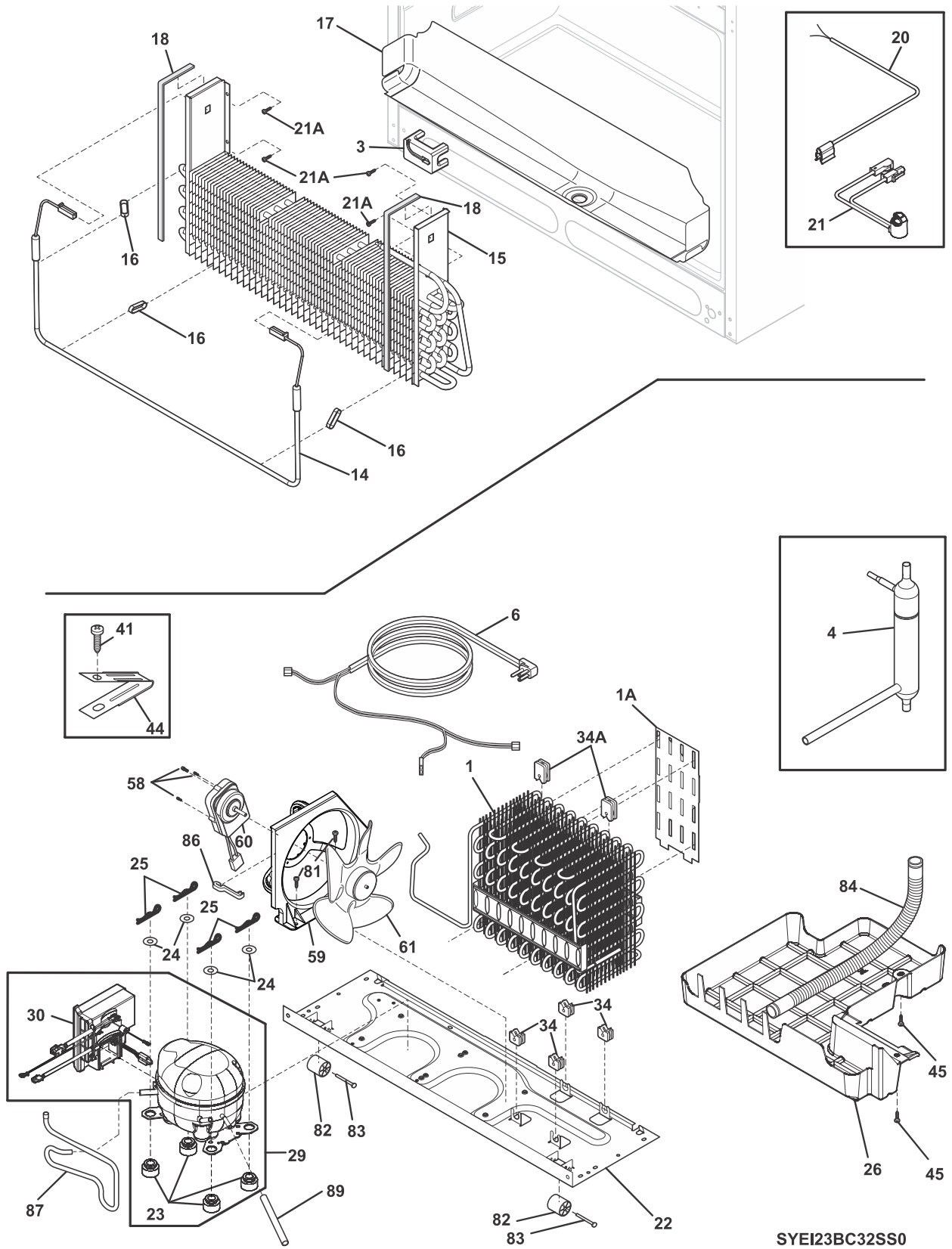


SHFFHG2250TS0

SHELVES

POS. NO	PART NO.	DESCRIPTION
1	242220119	Tube-water, 97.5", natural, filter base to, secondary valve
1*	242200102	Clip, tubing, 90 deg elbow
21A	241953902	Screw, quad hilo, #8-18 X 0.380
23	5304510345	Buffer, shelf, air
24	5304510351	Shelf Assembly, 1/2 width, rail/trim, glass & buffer
24B	5304508761	Cover, crisper, w/glass
25	5304508026	Cover, deli drawer, w/glass
26	5304510280	Pan-crisper, assembly, w/roller
26*	241695904	Screw, type AB, #10-16 x .5
42	5304508043	Rail, crisper cover, LH side
42A	5304508042	Rail, crisper cover, RH side
48	242122101	Channel-shelf mtg, center
49	242122202	Channel-shelf mtg, side, LH
49B	242122301	Channel-shelf mtg, side, RH
51	242120001	Slide-deli
62	242096803	Pan-deli
64	240396801	Clamp, tube/wiring, nylon, black/natural
137	807946701	Filter Assembly, PureSource U-II, w/cap
137*	807946702	Bypass Assembly, no filter, Optional Part
139	807931801	Manifold, water filter, 93.5", w/brown tube, filter base to, primary valve
145	5304508027	Support, deli cover, RH
145A	5304508028	Support, deli cover, LH
210	5303918723	Housing, water filter, w/plug & pad
210*	241500303	Screw, hex washer head, 8-18AB x 1/2
210*	242039702	Screw, shoulder, #10-16, (2)
211	807932201	Plug, filter housing
212	5304508016	Roller, crisper pan
213	242010901	Roller Assy, deli pan
*	241953901	Screw, quad hilo, #8-18 x 0.50, (2)
*	5304455650	Screw, hex washer head, 8-15A x 0.625, Low Profile
*	5304510226	Label, energy guide

COOLING SYSTEM

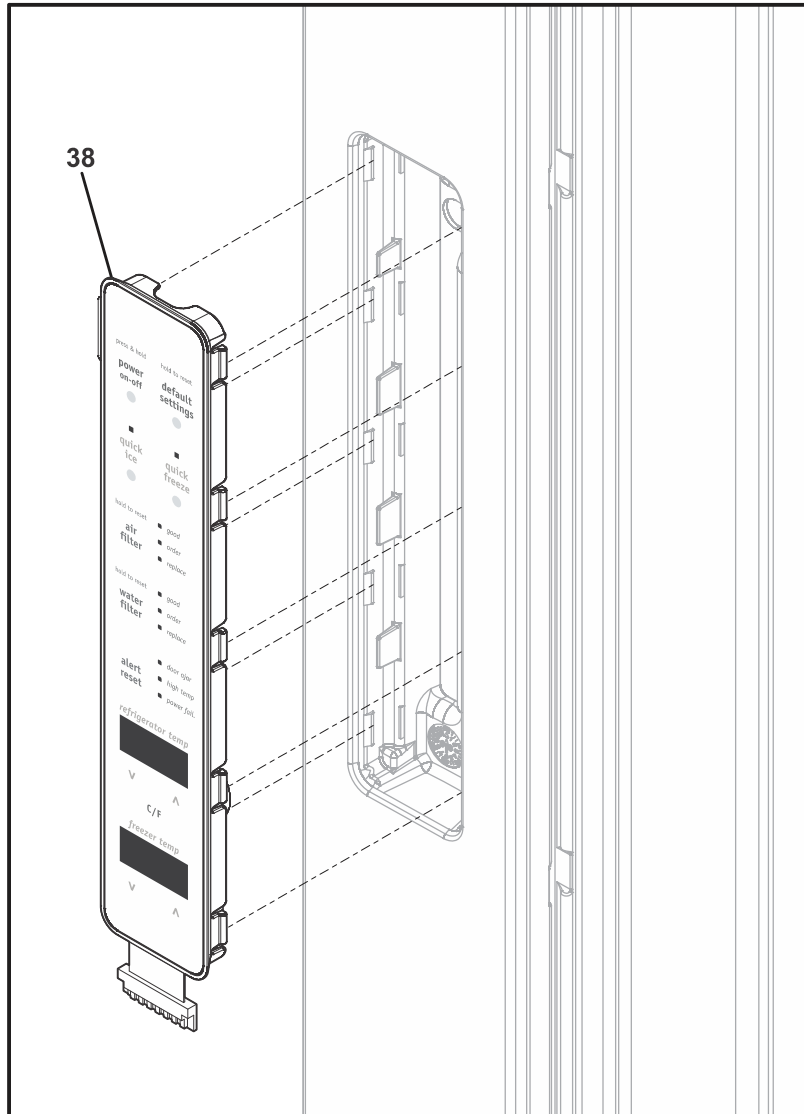


SYEI23BC32SS0

COOLING SYSTEM

POS. NO	PART NO.	DESCRIPTION
1 #	241862903	Condenser
1A	241987301	Deflector-air, condenser
3	241838401	Block-evap coil, styrofoam insul, RH
4 #	242047603	Dryer-filter
6 #	241516901	Cord-service
6* #	808772001	Harness-wiring, machine, Compartment, w/diodes
14 #	5303918410	Defrost Heater Kit, 28'
15 #	242044503	Evaporator
16	5308000110	Strap-evap/heater, aluminum, (2)
17	241791201	Trough-drain
18	241860101	Gasket, closed cell
20 #	5303918776	Thermistor, freezer defrost, NTC, w/connectors
21 #	808062701	Thermostat, defrost safety
21A	218362501	Screw, hex washer head, 8-18AB x 1.250, spacer, (2)
22	241602112	Base-compressor, w/rollers
22*	218252201	Screw, #8 truss hd, 10-32CA x 0.500
23	218513300	Grommet-compr mtg, (4)
24	241812301	Washer-compr mtg
25	242037702	Clip-spring
26	241920604	Pan-defrost
29 #	242104104	Compressor, service
30 #	808364712	Inverter
34	241929901	Grommet-cond mtg, (4)
34A	241929902	Grommet-cond mtg, (4)
41	240555002	Screw-#8-32 X 3/8
44	215174700	Clamp-service cord, strain relief, galv steel
45	5304455650	Screw, hex washer head, 8-15A x 0.625, Low Profile
58	240569201	Screw, 8-18 x 0.500
59	241946106	Shroud-cond fan
59*	240346701	Tape-foam seal, shroud
60 #	242018301	Motor-condenser fan
61	241639501	Blade-condenser fan
81	240359403	Screw-fan shroud, (2)
82	240335202	Roller, compressor base, rear
83	5304455655	Rivet, flat head, 1/4 OD x 1-3/4, roller pin
84	241830904	Tube-drain
84*	242036801	Clip-tube, drain
86	240409302	Spacer-cond tube, black
87	5304502967	Tube-connector, suction
89	215346900	Tube-process
* #	218515401	Clip-grille
* #	218709101	Screw, hex head, 10-32 x 0.500
* #	241947701	Spacer, heat exchanger
* #	241510904	Harness-dispenser, grounding
* #	5303918445	Heat Exchanger Kit, suction line, service

CONTROLS

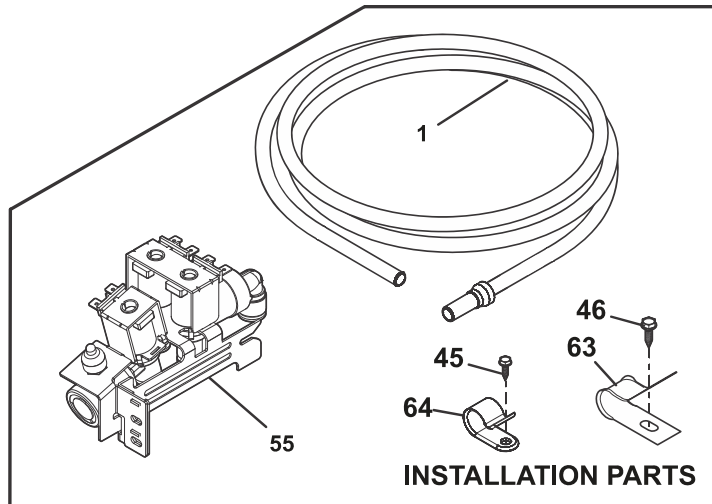
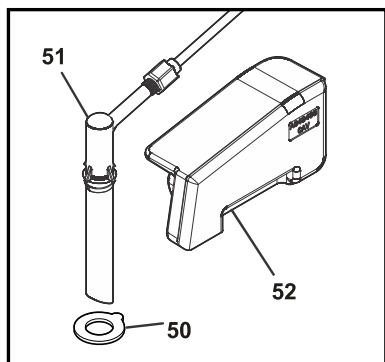
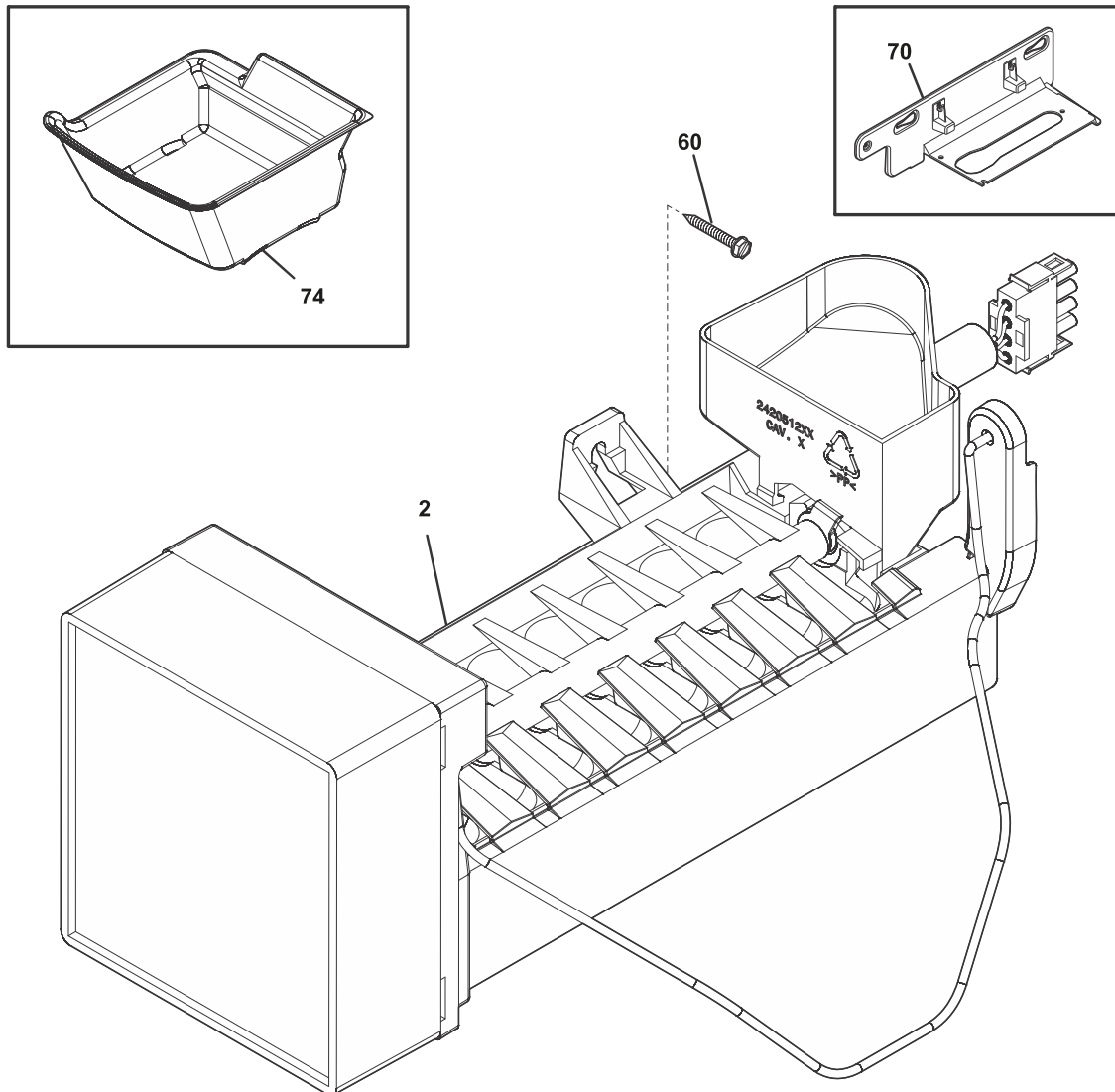


CTFGHG2366PFBA

CONTROLS

POS. NO	PART NO.	DESCRIPTION
38 #	5304512333	User Interface, assembly, black, w/board & pad
*	240451503	Screw, ind hex wshr hd, 8-32 x 0.375, trilobe
* #	241510904	Harness-dispenser, grounding
* #	242045402	Harness-wiring, door

ICE MAKER

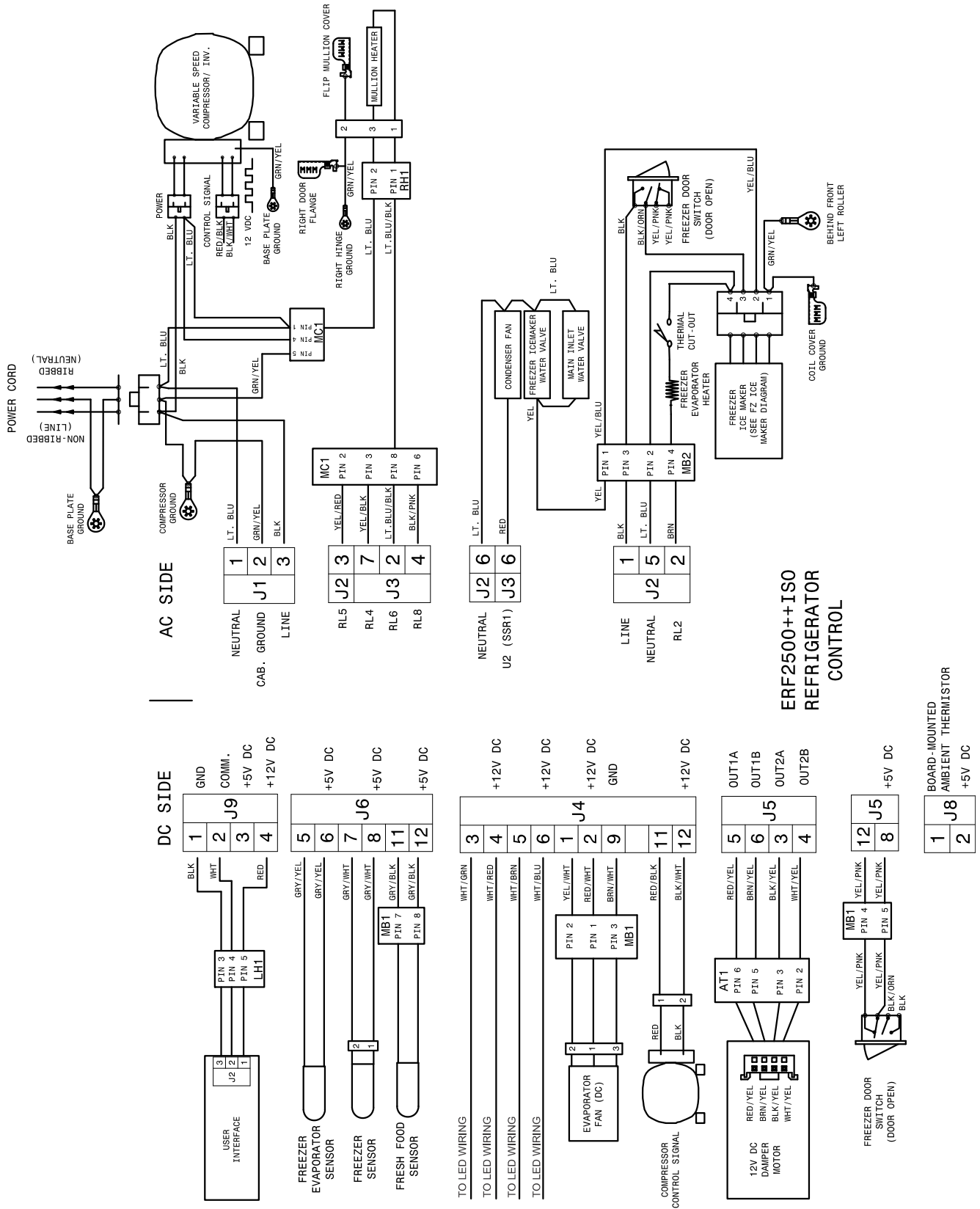


IZFGHG2366PFBA

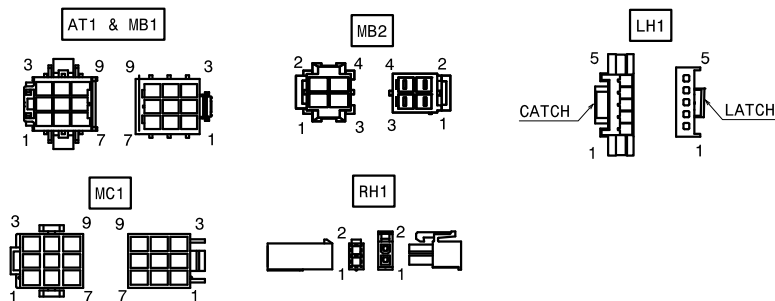
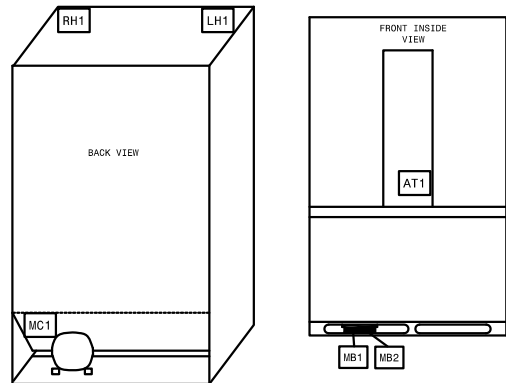
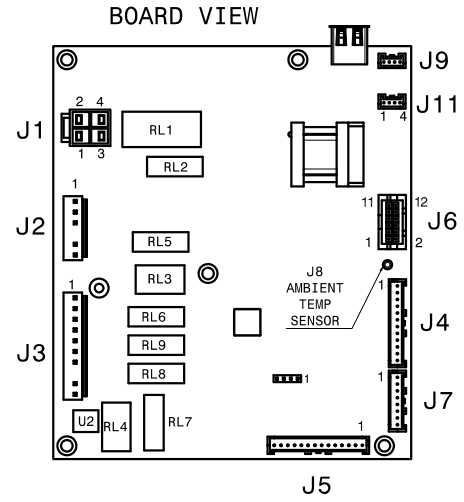
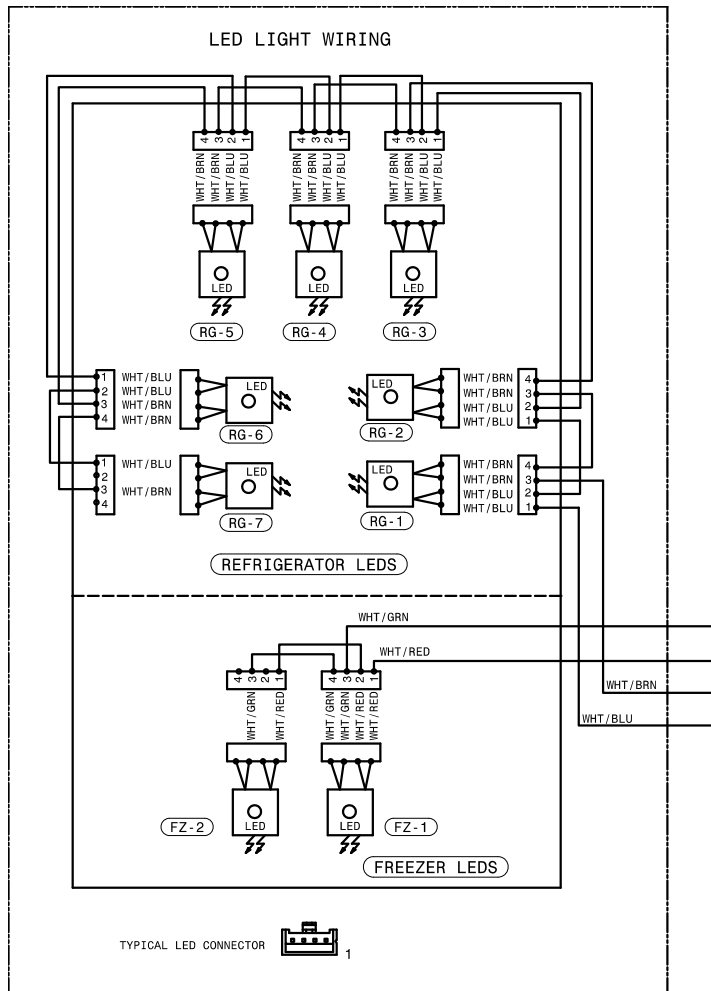
ICE MAKER

POS. NO	PART NO.	DESCRIPTION
1	242220119	Tube-water, 97.5", natural, filter base to, secondary valve
1*	242200102	Clip, tubing, 90 deg elbow
2 #	241798226	Ice Maker, radius cube, 115 V, service
45	5304455650	Screw, hex washer head, 8-15A x 0.625, Low Profile
46	5304453923	Screw, hex hd wshr, #8-32 x 1/2
50	241512813	Seal, doughnut
51	242169406	Tubing Assembly, water, 1/4 - 44", green
52	5304508046	Insulation, I/M fill tube
55 #	242252702	Valve, solenoid, triple
55*	218709101	Screw, hex head, 10-32 x 0.500
55*	240363602	Screw-shoulder
60	5303207328	Screw, hex washer head, 8-15A x 1.000, (2)
63	5304453921	Clamp-cable
64	240396801	Clamp, tube/wiring, nylon, black/natural
70	242053001	Bracket-ice maker
70*	241690701	Screw, hex washer head, 8-32T x 0.375
74	5304504278	Container, ice bucket

WIRING DIAGRAM



WIRING DIAGRAM



INLINE CONNECTOR ABBREVIATION KEY	
ABBR.	EXPLANATION
AT1	9 PIN CONNECTION AT AIR TOWER
LH1	5 PIN CONNECTION AT THE LEFT DOOR UPPER HINGE
MB1	9 PIN CONNECTION IN THE MAIN BOARD HOUSING BEHIND THE TOE GRILLE
MB2	4 PIN CONNECTION IN THE MAIN BOARD HOUSING BEHIND THE TOE GRILLE
MC1	9 PIN CONNECTION IN THE MACHINE COMPARTMENT TO THE LEFT OF THE COMPRESSOR
RH1	2 PIN CONNECTION AT THE RIGHT DOOR UPPER HINGE