

ELKAY[®]

SPECIFICATIONS

Lustertone[®] Undermount Double Bowl Sink Model ELUH3219

GENERAL

Highest quality sink seamlessly drawn of #18 gauge, type 304 (18-8) nickel bearing stainless steel. Underside of sink is fully protected by heavy duty Sound Guard™ undercoating. Designed to accept waste disposer. Reversible feature allows the sink to be rotated so small bowl is on the right.

DESIGN FEATURES

Bowl Depth: 5" (Small Bowl), 7-3/4" (Large Bowl).

Finish: Exposed surfaces are hand blended to a lustrous highlighted satin finish. Highlighted top bowl radius.

Underside: Fully protected by heavy duty Sound Guard™ undercoating to prevent condensation and deaden sound.

OTHER

Drain Openings: 3-1/2".

Note: All Elkay custom design undermount sinks are designed to affix easily to the underside of any solid surface countertop.

OPTIONAL ACCESSORIES

Rinsing Baskets: LKRB715, LKRB1520 and LKERBSS.

Bottom Grid: LKBG2015.

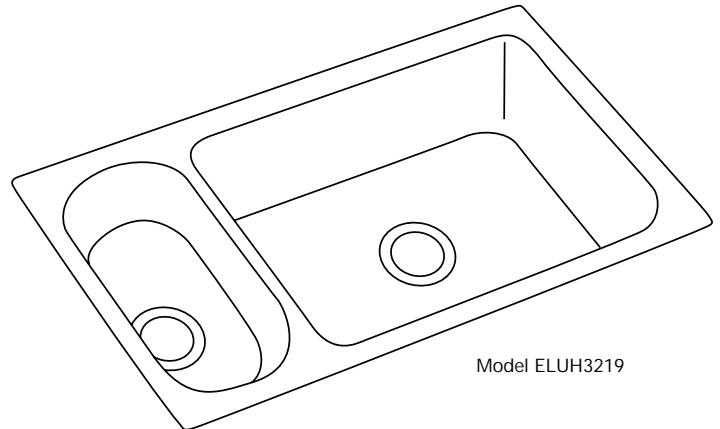
Cutting Board: CBS715.

SINK DIMENSIONS (INCHES)*

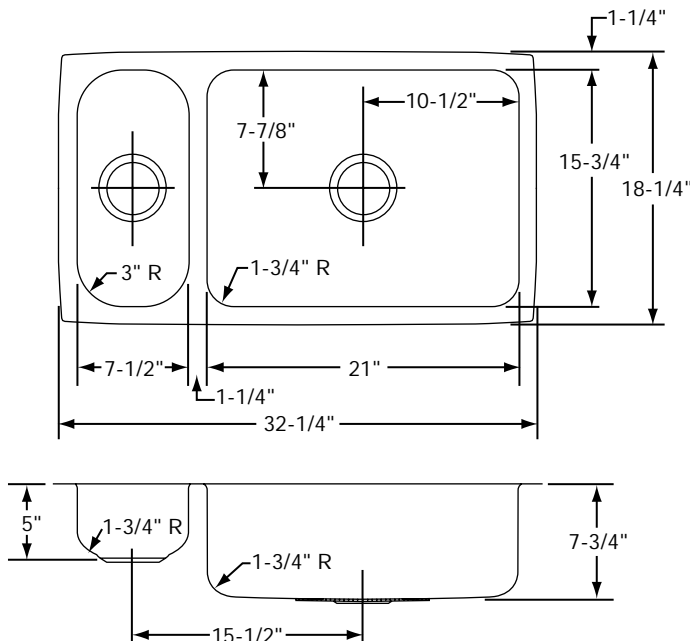
Model Number	Overall		Inside Small Bowl			Inside Large Bowl			Cutout in Countertop	Minimum Cabinet Size	Ship. Wt. Lbs.
	L	W	L	W	D	L	W	D			
ELUH3219	32 ¹ / ₄	18 ¹ / ₄	7 ¹ / ₂	15 ³ / ₄	5	21	15 ³ / ₄	7 ³ / ₄	See Template**	36	19

*Length is left to right. Width is front to back.

**Template and countertop mounting clips are packed with every sink.



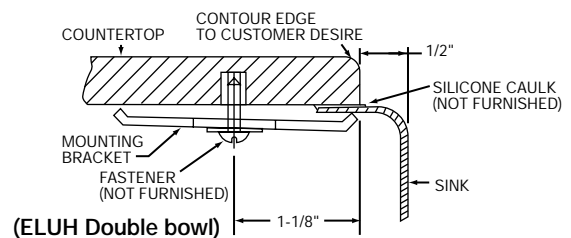
Model ELUH3219



Model ELUH3219 Illustrated

Installation Profile of ELUH Double Bowl Models

The template provided with each ELUH sink provides the only type of installation recommended by Elkay.



ALL DIMENSIONS IN INCHES, TO CONVERT TO MILLIMETERS MULTIPLY BY 25.4.

In keeping with our policy of continuing product improvement, Elkay reserves the right to change product specifications without notice.

This specification describes an Elkay product with design, quality and functional benefits to the user. When making a comparison of other producers' offerings, be certain these features are not overlooked.