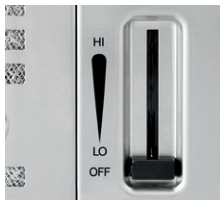


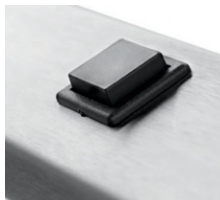
# Downdraft Vent

EI36DD10K S



## Infinite-Speed Blower Control

The ultraquiet blower allows you to dial in the precise airflow needed.



## Push-Button Auto Raise/Lower

When activated, the downdraft rises 10" to capture even the most stubborn cooking odors. Can be vented through wall, roof or floor.



## Stainless Steel Filters

Dishwasher-safe for easy cleaning.



## Blower Motor System Options\*

Choose the style of ventilation from an integrated or remote blower installation option. Next, choose 1,600 CFM remote or 600 CFM integrated blower option needed for your ventilation requirements.

### 36" DOWNDRAFT VENT

#### Features

|   |                 |
|---|-----------------|
| Nominal Width                           | 36"             |
| Installation Type                       | In-Cabinet      |
| Controls                                | Infinite-Speed  |
| Air Discharge                           | Down/Left/Right |
| Air Delivery (CFM) Remote/Integrated    | 1600/600        |
| Intake Area                             | 10"             |
| Blower Type                             | External        |
| Sound Level (dBA)                       | **              |
| Fan Speeds                              | Infinite        |
| Dishwasher-Safe Stainless Steel Filters | Yes             |
| Exhaust Duct                            | External        |
| Duct Required –                         |                 |
| 1600 CFM Remote Blower Motor            | 3-1/4" x 14"    |
| 600 CFM Integrated Blower Motor         | 3-1/4" x 10"    |

#### Blower Motor System Options\*

|  |            |
|--|------------|
| 1600 CFM Remote Blower Motor System Kit    | EI16DDPRKS |
| 600 CFM Integrated Blower Motor System Kit | EI06DDPIKS |

#### Accessories

|  |          |
|--|----------|
| Outdoor Kit (Remote Blower) – PN# WK-SP360 | Optional |
|--|----------|

#### Specifications

|   |                |
|---|----------------|
| Color –                                 | S              |
| Product Dimensions –                    |                |
| Height (Including 10" Rise)             | 35-13/16"      |
| Width                                   | 36"            |
| Depth                                   | 2"             |
| Voltage Rating                          | 120V/60 Hz/15A |
| Connected Load (kW Rating) @ 120 Volts† | 0.36           |
| Amps @ 120 Volts                        | 3.0            |
| Motor Power Cord Location               | Bottom Right   |
| Shipping Weight (Approx.)               | 55 Lbs.        |
| Sones Rating                            | **             |

† For use on adequately wired 120V, dedicated circuit having 2-wire service with a separate ground wire. Appliances must be grounded for safe operation.

\* Blower Motor System ordered separate from vent. Blower Motor System Kit shipped separate. Only one System Kit is necessary per Downdraft Vent.

\*\* Actual sound measurement varies with each installation.

NOTE: Always consult local and national electric codes. Check local building codes for installation requirements, as they may vary per locale. Refer to Product Installation Guide for detailed installation instructions on the web at [electroluxappliances.com](http://electroluxappliances.com).

Specifications subject to change.