

FRONT LOAD WASHERS

EFLS210T IS/IW

With IQ-Touch™ Electronic Controls Featuring Perfect Steam™



PRODUCT DIMENSIONS

Height	33-1/2"
Width	24"
Depth	25"

MORE EASY-TO-USE FEATURES

NSF® CERTIFIED

Our products undergo rigorous testing to ensure they meet the industry safety standards.

DEEP CLEAN SANITATION CYCLE

Removes 99% of bacteria and 95% of common household allergens⁴.

HIGHEST SPIN SPEED

1400 RPM spin speed removes more water and allows for more efficient drying. Highest spin speed available.

LUXURY-QUIET™

So quiet you can run it whenever you want.

PLATINUM STAR® LIMITED WARRANTY

Our exclusive limited warranty that includes a 3-year coverage on parts and one year on labor⁵.

PERFECT BALANCE® SYSTEM / SECOND FLOOR GUARANTEE

State-of-the-art technology keeps even oversized wash loads balanced for smooth, quiet operation. Perfect for installation upstairs — even near bedrooms.

IQ-TOUCH™ CONTROLS

Unique knobless controls and intuitive design offer clean, sleek style to fit any space and provide easy operation.

ENERGY STAR® QUALIFIED

Our products meet strict criteria to guarantee high-quality energy efficient performance.

ECO-FRIENDLY

Gentle on the environment and your clothes. Washers are 75% more energy efficient⁶ and use 56% less water.

DELAY START

Adjust washer start time to meet your lifestyle needs.

Available in:



Stainless
(IS)



Island White
(IW)

SIGNATURE FEATURES



PERFECT STEAM™ WASHER

Only steam washer available in compact laundry industry¹. Our Perfect Steam™ washer releases steam from the bottom so it uses the natural rise of steam to more effectively remove stains. Includes optional direct drain kit.



INDUSTRY LEADING CAPACITY²

Wash the most in one compact load with our 2.4 cu. ft. capacity washer.



EXPERTCARE™ WASH SYSTEM

No other compact washer cleans better³. State-of-the-art wash technology includes varied wash motions and bottom-vent steam options to deliver the best front load cleaning performance.



14 SPECIALTY CYCLES

Including Fast Wash, Eco-Friendly, Delicate.

¹Compact industry refers to washers/dryers 25" and below.

²Among like priced models.

³Compared to traditional compact washers.

⁴Our products meet the NSF® testing standards.

⁵Eligibility based on product registration with Electrolux North America within 60 days of purchase. Products must have been purchased on or after July 1, 2013. Coverage includes material parts for 3 years and labor for 1 year.

⁶Energy efficiency based on current DOE Federal minimum standard for washers based on MEF.

FRONT LOAD WASHERS

EFLS210T IS/IW



24" FRONT LOAD WASHER

Capacity D.O.E.	2.4 Cu.Ft.
-----------------	------------

FEATURES

Pull-to-Open Door	Yes
iQ-Touch™ Electronic Controls	Yes
Perfect Steam™ Wash System	Yes
Balance System	Perfect Balance®
Sound System	Luxury-Quiet™
Wash System	ExpertCare™
Integral Water Heater	Yes
Wash Drum	Stainless Steel
Automatic Temperature Control	Yes
Automatic Water Level Adjustment	Yes
Auto Prewash Detergent Dispenser (Liquid/Powder)	Yes
Auto Bleach Dispenser (Liquid Only)	Yes
Auto Detergent Dispenser (Liquid/Powder)	Yes
Auto Fabric Softener Dispenser (Liquid Only)	Yes
Spin Speed (RPM)	1,400
Adjustable Leveling Legs	Yes
ENERGY STAR®	Yes
NSF® Certified	Yes

CYCLES

Normal, Deep Clean Sanitize, Heavy Duty, Delicates, Rinse & Spin, Casual;	6 Wash;
Steam Refresh, Normal with Steam, Casual with Steam;	3 Steam;
Fast Wash, Whites, Wool, Jeans, Clean Washer	5 Specialty

OPTIONS

Temperature Selections	5
Add Steam	Yes
Spin Speed Selections	5
Soil Level Selections	5
Delay Start (Hours)	Yes
End-of-Cycle Chime	Yes

INSTALLATION OPTIONS

Freestanding, Under Counter, Stacked (Under Dryer), Pedestal, Recessed Alcove	Yes
---	-----

ACCESSORIES

Pedestal – Stainless Steel – PN# EPWD210TIS White – PN# EPWD210TIW	Optional Optional
Dryer Stacking Kit – Stainless Steel with Drawer– PN# STACKIT24S White with Drawer– PN# STACKIT24W No Drawer– PN# STACKIT24C	Optional Optional Optional
Direct Drain Kit	Included

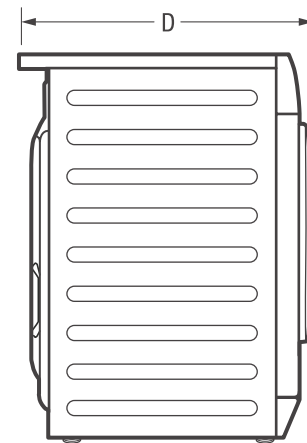
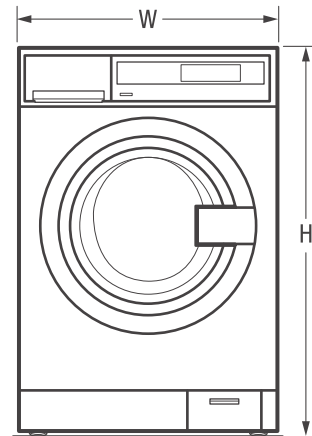
SPECIFICATIONS

Color –	
Stainless Steel	IS
White	IW
Power Supply Location	Top Right Rear
Water Inlet Location	Top Right Rear
Voltage Rating	120V / 60 Hz
Connected Load (kW Rating) @ 120 Volts ¹	1.3 kW
Watts @ 120 Volts	1300 W
Amps @ 120 Volts	10A
Shipping Weight (Approx.)	180 Lbs.

¹An electrical supply with grounded three-prong receptacle is required. The power supply circuit must be installed in accordance with current edition of National Electrical Code (NEPA 70) and local codes & ordinances.

NOTE: Always consult local and national electric and plumbing codes. Refer to Product Installation Guide for detailed installation instructions on the web at electroluxappliances.com.

Specifications subject to change.



PRODUCT DIMENSIONS

Height (without 12" Pedestal)	33-1/2"
(with 12" Pedestal)	46"
Width	24"
Depth	25"
(with Door 90° Open)	42"

Electrolux Major Appliances, N.A.

USA • 10200 David Taylor Drive • Charlotte, NC 28262 • 1-877-4electrolux (1-877-435-3287) • electroluxappliances.com
 CANADA • 5855 Terry Fox Way • Mississauga, ON L5V 3E4 • 1-800-265-8352 • electroluxappliances.ca

EFLS210T 06/17

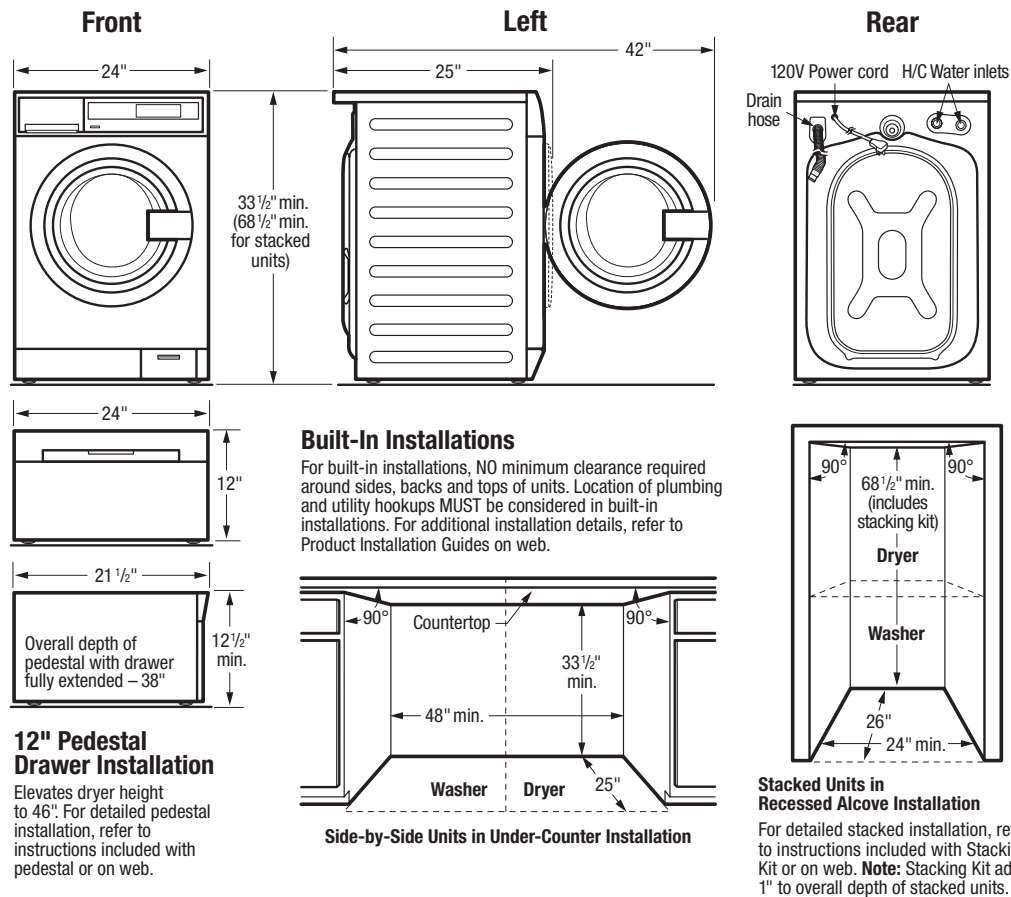
© 2017 Electrolux Home Products, Inc.



High standards of quality at Electrolux Home Products, Inc. mean we are constantly working to improve our products. We reserve the right to change specifications or discontinue models without notice.

FRONT LOAD WASHERS

EFLS210T IS/IW



Front Load Washer Specifications

- Product Weight – 174 Lbs.
- An electrical supply with grounded three-prong receptacle is required. The power supply circuit must be installed in accordance with current edition of National Electrical Code (ANSI/NFPA 70) and local codes & ordinances. (Do not use same circuit as dryer.)
- Voltage Rating – 120V/60Hz
- Connected Load (kW Rating) @ 120 Volts = 1.3 kW
- Amps @ 120V = 10A
- Equipped with 120V 3-wire power supply cord, approx. 59" long.
- Always consult local and national electric & plumbing codes.
- To maximize detergent effectiveness, ambient temperature should never be below 60°F.
- Can be installed alone, with or without optional 12" pedestal drawer, or stacked beneath matching Electrolux Dryer, which requires installation of optional dryer stacking kit. (For installation details, refer to instructions included with optional pedestal or stacking kit or on web.)
- Can be built in with matching Electrolux Dryer in under-counter or recessed alcove installation with NO minimum clearance required around sides, backs and tops of units. (Refer to Built-In Installations on this page for cutout dimensions. For additional installation details, refer to Product Installation Guide on web.)

- Do NOT install in area exposed to dripping water or outdoor weather conditions, or where gasoline or other flammables are kept or stored.
- For garage installation, washer MUST be located minimum 18" above floor.
- Floor MUST be solid with 1" maximum slope. To ensure vibration or movement does not occur, reinforcement of floor may be necessary. Do NOT install on carpeted surface.
- Leveling legs supplied to level washer properly and reduce excessive noise and vibration.
- H/C water faucets MUST be installed within hose length of washer's water inlet and MUST be 3/4" garden hose type, to connect to inlet hoses.
- Water pressure MUST be between 10 and 110 psi with NOT more than 10 psi pressure difference between hot and cold.
- Drain required with standpipe diameter of 1-1/4" min. and height of 24" min./56-1/2" max. above floor, capable of eliminating 6 gallons per minute. Drain hose length approximately 55'. **Note:** When installing with matching Condensation Dryer using Direct Condensation Drain Hose Kit, standpipe height must be located 40" max. above bottom of dryer's leveling legs.

Note: For planning purposes only. Refer to Product Installation Guide on the web at electroluxappliances.com for detailed instructions.

Optional Accessories

- Pedestal Drawers – Stainless Steel (PN# EPWD210TIS), White (PN# EPWD210TIW).
- Dryer Stacking Kit – Stainless Steel with Drawer (PN# STACKIT24S), White with Drawer (PN# STACKIT24W), No Drawer (PN# STACKIT24C).

Electrolux Major Appliances, N.A.

USA • 10200 David Taylor Drive • Charlotte, NC 28262 • 1-877-4electrolux (1-877-435-3287) • electroluxappliances.com
CANADA • 5855 Terry Fox Way • Mississauga, ON L5V 3E4 • 1-800-265-8352 • electroluxappliances.ca

EFLS210T 06/17

© 2017 Electrolux Home Products, Inc.



High standards of quality at Electrolux Home Products, Inc. mean we are constantly working to improve our products. We reserve the right to change specifications or discontinue models without notice.