

DAS 4940

36" Built In Hood with Conn@ctivity

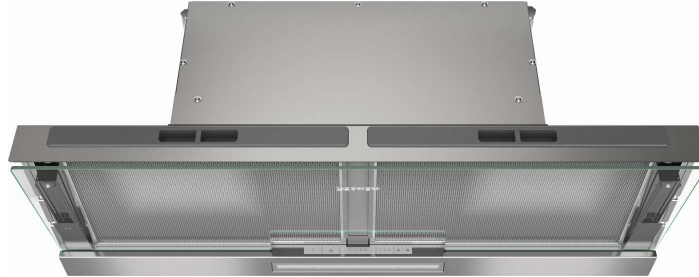
Features:

LED Strip for bright, even light distribution

Unique glass canopy

10 ply grease filters for efficient filtration

WiFi Connected

**MATERIAL**

11878570

SPECIFICATIONS

Overall Dimensions (Canopy)	34" (861mm) W
	2 3/4" (68mm) H
	12 1/8" (307mm) D

Electrical

Electrical Requirements	120V, 60 Hz, 15A
Power Cord	NEMA 15-5 plug, 2 ft (0.8m)

Weight

Shipping Weight	38lbs (17.0kg)
-----------------	----------------

Fan

Fan Speeds	4
Maximum CFM (boost)	500

Duct

Duct Diameter	6" (150mm)
---------------	------------

