

**SPECIFICATIONS**

**ANTIOCH™ TWO HANDLE CENTERSET LAVATORY FAUCET**

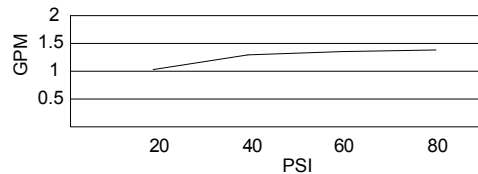
**Model**

D301022

**Description**

- Ceramic disc valve
- 4 ½" spout length, laminar flow
- 50/50 pop-up drain assembly
- 3 hole mount
- Flow rate: 1.5 gpm @ 60 psi

**Flow Rate**



**Standards**



Certified to NSF/ANSI 61 Section 9

- NSF 61-9
- Energy Policy Act of 1992



NSF/ANSI 372

- ASME A112.18.1/A112.18.1
- NSF/ANSI 372



- ADA Accessibility Guidelines for Buildings and Facilities - 4.27.4 Controls and Mechanisms



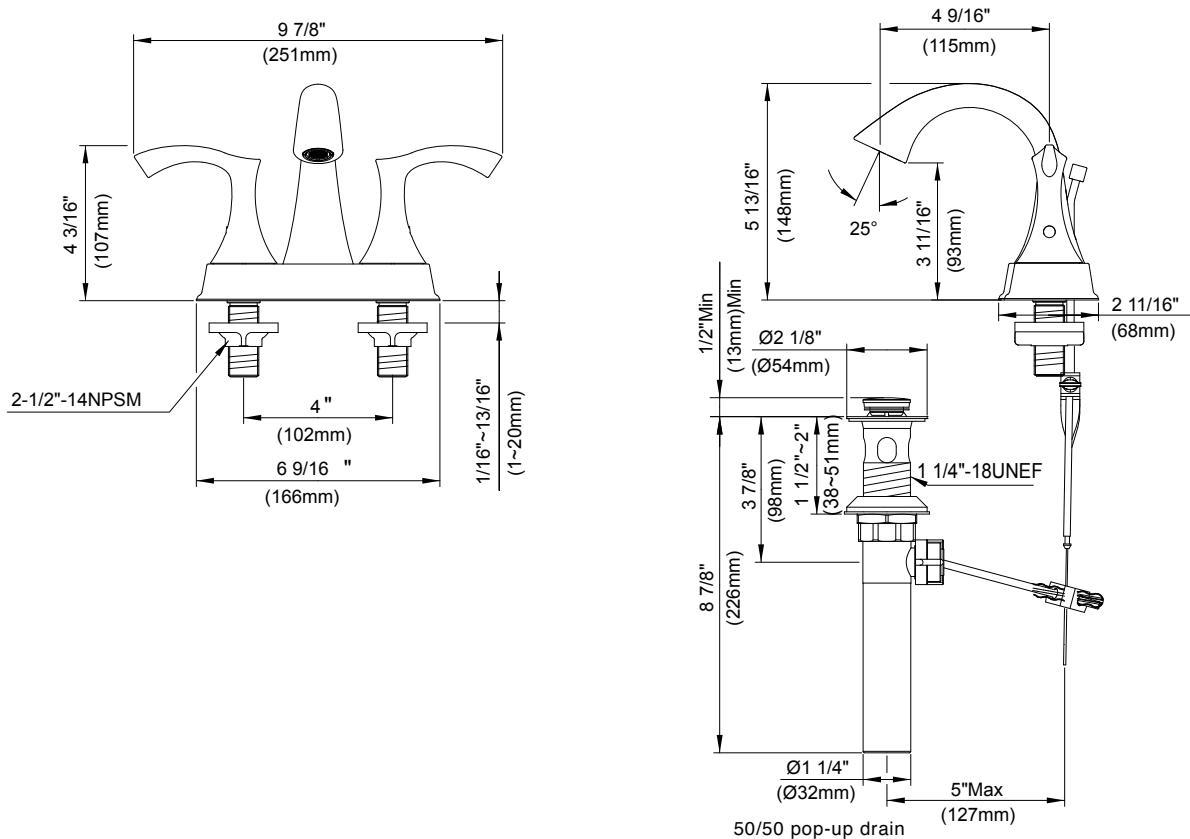
Certified by IAPMO R&T

**Finishes Available**

- Chrome
- Other: Refer to Price List for additional finish

**Warranty**

Danze products are covered by a manufacturer's limited "lifetime" warranty for manufacturing defects.



Submittal Information:

Job Name: \_\_\_\_\_

Location: \_\_\_\_\_

Contractor: \_\_\_\_\_

Contact #: \_\_\_\_\_