

This Data Sheet Includes Information On

Magic Chef

Product Model Number (s):

Gas Cooktops:
CGC2536ADW, CGC2536ADQ, CGC2536ADC and
CGC2536ADB

Dimensions (Actual Size)

- Overall width: 36"
- Overall depth: 21"
- Distance from countertop to bottom of unit: 3 13/16"
- Cut-Out width: 34 1/2"
- Cut-Out depth: 19 15/16"
- Minimum spacing to nearest vertical combustible wall to the RIGHT: 6"
- Minimum spacing to nearest vertical combustible wall to the LEFT: 6"
- Minimum spacing to nearest vertical combustible wall to the REAR: 1"
- Minimum spacing to front edge of counter: 2 1/8"
- Minimum distance between cooktop and cabinet directly above: 30" min
- Minimum width of cabinet directly above: 36"
- Maximum depth of cabinets directly above and adjacent: 13"
- Minimum distance between countertop and adjacent cabinet above: 18"

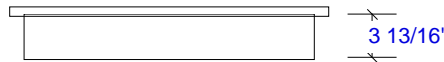
Additional Information

- Designed to fit in a standard 36" wide cabinet and 25" deep countertop. 1/4" or 3/8" Radius on cutout corners.
- Minimum distance from top of counter to combustible material below is 5 1/4".
- Electrical requirements: 120 volts 60 Hz protected by a 15 amp fuse or compatible circuit breaker. Minimum wire size is 14 gauge. Copper wire only. Unit is supplied with a power cord having a 3-prong grounding plug. A grounded and polarized 3-prong receptacle should be made available. Individual branch circuit serving the cooktop is recommended.
- Gas requirements: Supply line should be sized per national code and enter the cooktop in right rear corner of unit. Unit is shipped from factory for use on natural gas. Unit is equipped with built-in conversion for use on LP gas.
 - Supplied with 1/2" NPT female inlet on regulator. Regulator supplied with unit and a shutoff valve must be installed in an accessible location.
 - Gas pressure requirements: Natural gas- 6" WC min, 14" WC max. LP gas- 11" WC min, 14" WC max.

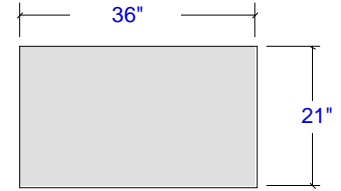
Subject to change without notice. This system is designed to be updated daily if necessary. Dimension Express is not responsible for use of superseded, voided, or outdated data sheets. Because of the difficulty or impracticability of determining actual damages, liability of Dimension Express shall not exceed \$50.00.

Copyright © Dimension Express, 2002.

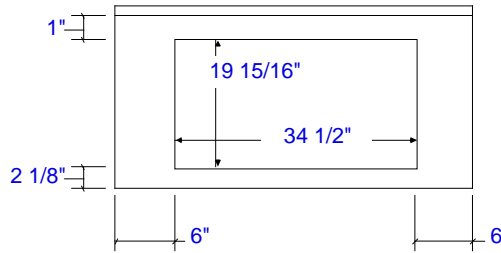
252



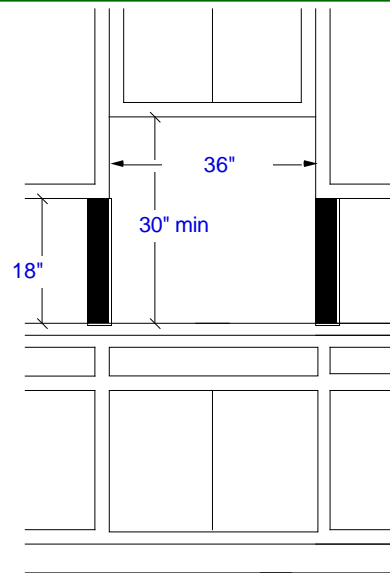
Side View (not to scale)



Overall Dimensions
Top View (not to scale)



Cut-Out Dimensions
Countertop View
(not to scale)



Cabinet Requirements
Wall View
(not to scale)

Requires 18" high by
6" wide clearance to
any combustible
surface above the
cooktop on both sides.
(noted by solid area)

• NEVER reuse Data Sheets. Data Sheets are subject to change without notice. Dimension Express is a FREE service bureau and is updated daily, it makes far more sense to spend the time necessary to request new Data Sheets for each project, as opposed to the problems, time, costs, and risks associated with reusing old Data Sheets.

- Call Dimension Express if you have any questions at (775) 833-3633 •
- Always refer to a current Code at a Glance or manufacturer directory •
- Data Sheet codes change on the first of odd numbered months at 12:01am •

BN • A252 • • 031004 • 135955 • 97845