



DW18SSADA



32.5" x 17.63" x 21.63" (H x W x D)

18" wide ADA compliant ENERGY STAR qualified dishwasher with stainless steel or panel-ready door, made in Europe

Highlights:

Just under 18" wide for an easy fit in space-challenged kitchens

ENERGY STAR qualified performance to save on electricity and water usage

32 1/2" height fits under lower ADA compliant counters

Advanced sound absorption technology for quiet operation

Product Features:

ADA compliant	32 1/2" height is ideal for installation under lower ADA compliant counters
ENERGY STAR qualified	Uses less energy and water than national standards require to ensure more efficiency and lower utility bills
Stainless steel door & handle	Professional look in 304 grade stainless steel
Convertible to accept custom panels	Stainless steel wrap can be removed by customer or installer and replaced with an alternate overlay panel for a custom look
Ultra quiet performance	Advanced sound absorbing construction
Standard capacity	Interior holds up to 8 standard place settings
Removable cutlery basket	Separate your silverware for better cleaning and convenient unloading
Three filter system	Thoughtfully designed to be tougher on food stains
Four wash settings	Different wash options allow the optimum care for dishes, cookware, and china



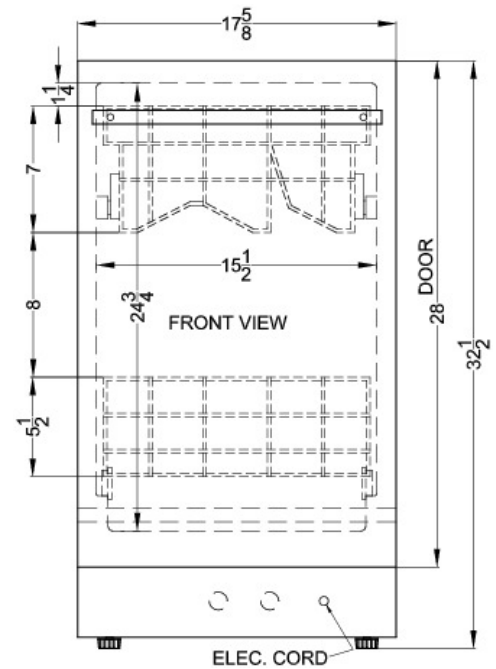
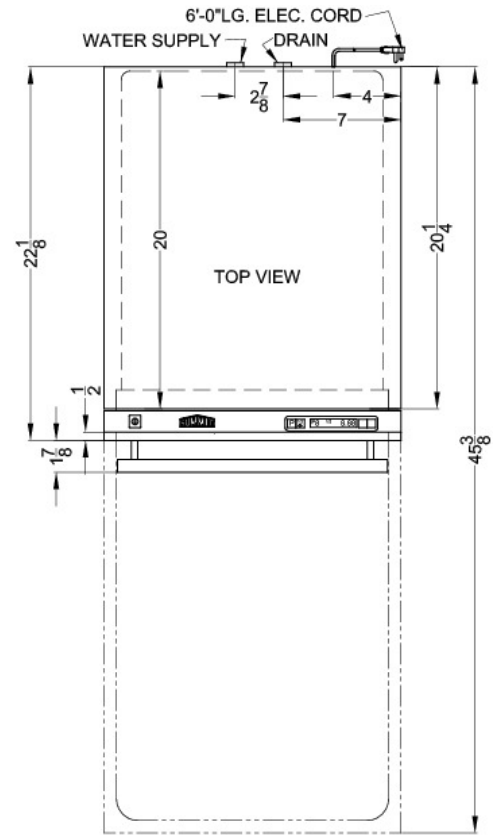
SUMMIT APPLIANCE DIVISION FELIX STORCH, INC.

770 Garrison Avenue, Bronx, NY 10474 USA TEL 718-893-3900 FAX 844-478-8799 info@summitappliance.com  www.summitappliance.com



DW18SSADA Specifications:

Overview	
Height	32.5"
Width	17.63"
Depth	21.63"
Depth with door at 90°	45.38"
Dishwasher	Standard
Door	Stainless Steel/Panel-Ready
Cabinet	Unfinished
US Electrical Safety	UL
Canadian Electrical Safety	ULC
Energy Usage/Year	210.0kWh/year
Amps	12.0
Voltage/Frequency	115 V AC/60 Hz
Weight	80.0 lbs.
Shipping Weight	135.0 lbs.
Parts & Labor Warranty	1 Year
Dishwasher	
Number of Racks	2
Silverware Basket	Yes
China Setting	Yes
Interior Finish	SS
Interior Height	24.75"
Interior Depth	20.0"
Decibel Rating	52.0 dBA
Number of Options	4
Leveling Legs	Yes
Place Settings	8 place settings



SUMMIT APPLIANCE DIVISION FELIX STORCH, INC.

770 Garrison Avenue, Bronx, NY 10474 USA TEL 718-893-3900 FAX 844-478-8799

info@summitappliance.com



www.summitappliance.com