

BLUESTAR PRO-LINE HOOD SERIES

With over 125 years of experience making cooking equipment, and as the leading manufacturer of high-performance commercial-style ranges for the home, BlueStar is now proud to offer a line of commercial-grade stainless steel hoods.

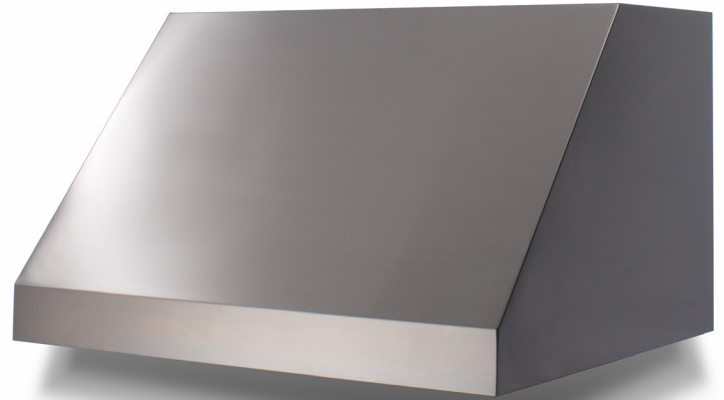
The perfect complement to a BlueStar range or cooktop, BlueStar's Pro-Line Hood Series combines heavy-duty construction with seamless design to produce a hood with uncompromised durability, functionality, and beauty. And with 190 standard colors from which to choose, it's easy to match any kitchen's color scheme.

Pro-Line Hood Features:

- Available in 30", 36", 42", 48", 54", 60", and 66" width sizes.
- All sizes available with up to 1200 CFM.
- Commercial grade 18 gauge 300 stainless steel construction.
- Welded seamless corners.
- Dishwasher safe stainless steel baffle filters.
- Variable blower control.
- Halogen lamps with dimmer control.
- Reversible top or rear exhaust.
- Largest filtered capture in the industry.
- Available in 190 colors.

Pro-Line Hood Models:

Model	Size	Material	CFM
BS-PL30240	30"W x 24"D x 18"H	Stainless Steel	600 or 1200 CFM
BS-PL36240	36"W x 24"D x 18"H	Stainless Steel	600 or 1200 CFM
BS-PL42240	42"W x 24"D x 18"H	Stainless Steel	1200 CFM
BS-PL48240	48"W x 24"D x 18"H	Stainless Steel	1200 CFM
BS-PL54240	54"W x 24"D x 18"H	Stainless Steel	1200 CFM
BS-PL60240	60"W x 24"D x 18"H	Stainless Steel	1200 CFM
BS-PL66240	66"W x 24"D x 18"H	Stainless Steel	1200 CFM



Model BS-PL30240 in Stainless Steel Shown Above



Model BS-PL36240 in Red Wine (RAL 3005) Shown Above

BLUESTAR PRO-LINE HOOD SERIES

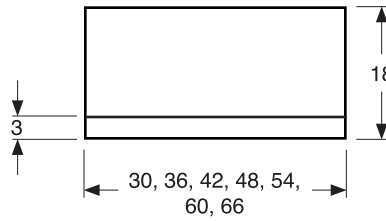
Standard Features

- Commercial grade 18 gauge 300 stainless steel construction.
- Welded seamless corners.
- Dishwasher safe stainless steel baffle filters.
- Variable blower control.
- Halogen lamps with dimmer control.
- Reversible top or rear exhaust.
- Largest filtered capture in the industry.

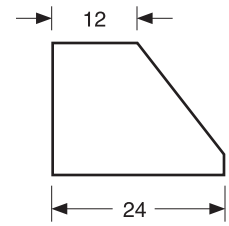
Electrical Requirements

- 15 amps at 120 volts.
- Light bulbs are PAR 16 60 watt halogen.
- Blowers must be purchased separately.

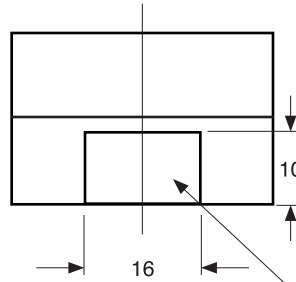
FRONT VIEW



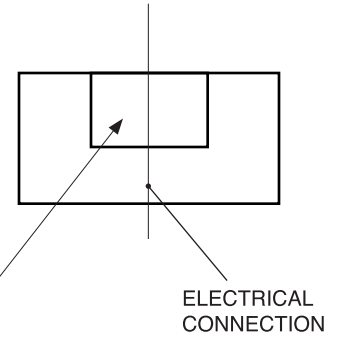
SIDE VIEW



TOP VIEW

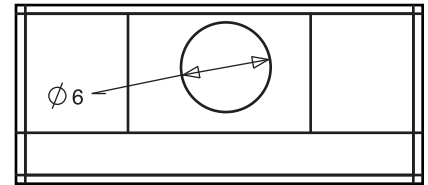


BACK VIEW

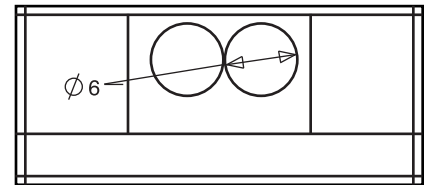


Dealer

600 CFM BLOWER



1200 CFM BLOWER
w/ TR6 X 15/8 Transition
Required



Manufacturing Facility:
600 Arlington Street, Reading, PA USA 19611
www.bluestarcooking.com



0608-02-RevA