

FPRO30COSTX

PROFESSIONAL SERIES

30" COMBINATION WALL OVEN IN STAINLESS STEEL

MAIN OVEN WITH SELF CLEAN



PRODUCT FEATURES

Oven type	Combination Wall Oven
Microwave Oven Power Rating (Rating at 240V)	Bake: 2550 W Broiler: 2500 W Convection: 1800 W Microwave: 2000 W
Main Oven Power Rating (Rating at 240 V)	Bake: 3500 W Broiler: 3400 W Convection: 2420 W
Oven Volume	4.8 cu.ft.
Microwave Volume	1.6 cu.ft.
Convection System	1 Fan
User interface	Full Touch 8.8" TFT display
Cooking modes	Bake, Broil, Convection, Convection bake, Convection broil, Convection Roast Pizza, Air Fry
Special features	Dehydrate, Proofing, Warming 149 °F, Warming 199 °F, Sabbath mode
Cooking modes (Microwave)	Microwave, Defrost, Popcorn, Pizza, Beverage, Potatoes, Ice Cream
Bertazzoni Mobile App	Yes
Food temperature probe	Yes
Shelf levels	7
Door hinges	Double Soft Closing
Included accessories (Main Oven)	1 wire shelf flat + 1 wire shelf shaped 1 set of telescopic glides 1 baking tray with roasting trivet
Included accessories (Microwave Oven)	1 trivet + 1 glass tray
Cleaning	Self Clean, Eco Clean, Hydro Clean

TECHNICAL SPECIFICATIONS

Electrical supply	120/208 V 60HZ - 4400 W 120/240 V 60 HZ - 5500 W 30 Amp dedicated circuit
Power connection	Metal conduit with 59" power cord
Certification	cULus
Warranty	2 years parts & labor
Product dimensions	W: 29 7/8" H: 42" D: 24 1/2"
Cut out dimensions	W: 28 1/2" H: 41 1/2" D: 24 5/8"
Packaging dimensions and weight	W: 33 1/2" H: 50 1/2" D: 30" 412.5 lbs

Combo Oven for Maximum Versatility

The new line-up also includes the Combo, a combination of a traditional oven in the main cavity with a speed oven microwave in the upper cavity. This innovation provides users with all available cooking techniques, ensuring maximum flexibility in the kitchen. With the Combo oven, users can efficiently switch between traditional baking, roasting, and rapid microwave cooking, optimizing time and enhancing meal preparation possibilities.

Enhanced Full Touch TFT Display

The 8.8-inch high-resolution display ensures effortless navigation, featuring an intuitive interface that guides users step by step through cooking functions. This seamless user experience makes even the most advanced cooking techniques accessible to all.

Smart Connectivity with the Bertazzoni Mobile App

The Bertazzoni App enables remote control of cooking programs, real-time progress tracking, and access to an integrated recipe book. Additionally, it ensures continuous software updates to optimize performance and introduce new features.

New Air Fry Mode for Healthier, Crispier Cooking

This function uses the grill at maximum temperature alongside powerful ventilation to circulate hot air evenly around food. Perfect for fries, meats, fish, and vegetarian recipes, this method preserves flavor and nutrients while eliminating the need for deep frying.

Expanded Capacity and Enhanced Installation

Flexibility The newly designed oven offers a spacious 4.8 cu.ft. cavity, increasing capacity by 17% compared to previous models. The microwave has also been expanded to 1.6 cu.ft., a 23% increase.

FPRO30COSTX

PROFESSIONAL SERIES

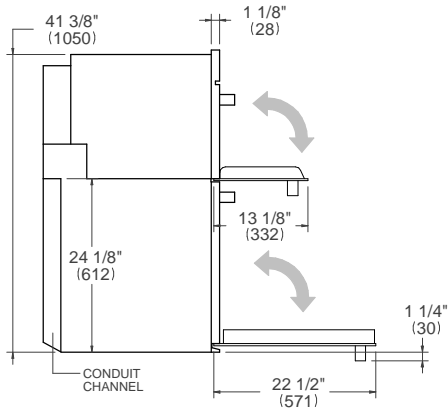
30" COMBINATION WALL OVEN IN STAINLESS STEEL

MAIN OVEN WITH SELF CLEAN

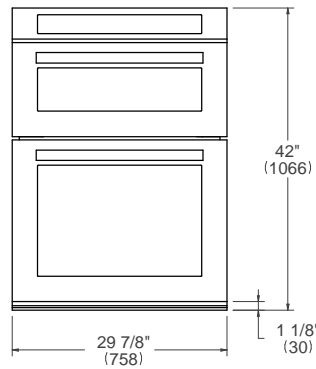


PRODUCT DIMENSIONS

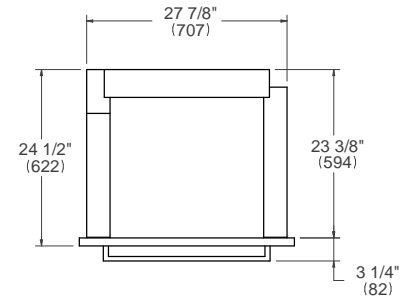
SIDE VIEW



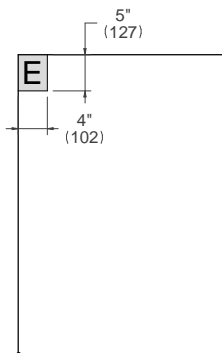
FRONT VIEW



TOP VIEW



ELECTRICAL CONNECTION



E

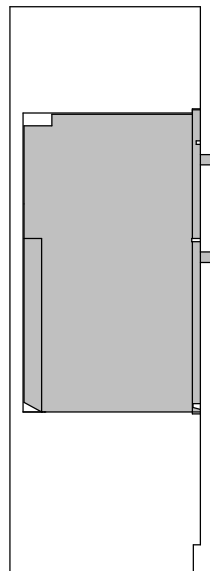
For single ovens installed into a wall cabinet, the electrical junction box may be located above, below to the left or right of the unit within reach of the power cord. Placement within the opening may require additional cabinet depth.

INSTALLATION REQUIREMENTS

Minimum suggested load on cabinet base board 300 lb (125 kg)

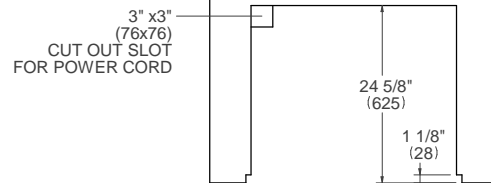
CUTOUT DIMENSIONS

SIDE VIEW

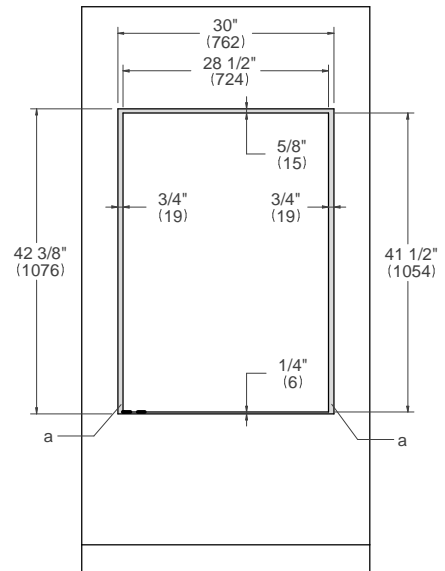


(a) Visible Area – Match finish to cabinetry

TOP VIEW



FRONT VIEW



For installation of multiple products in combination, refer to the Design Guide at us.bertazzoni.com or ca.bertazzoni.com

Disclaimer: while every effort has been made to ensure the accuracy of the information contained in this document, Fratelli Bertazzoni reserves the right to change it at any time without notice. For detailed installation instructions, consult the installation manual. Fratelli Bertazzoni, Bertazzoni and the winged wheel brand icon are registered trademarks of Bertazzoni Spa.