



BS484610
400 series Combi-steam oven
Stainless steel-backed full glass door
Width 30" (76 cm)
Right-hinged
Controls at the bottom

Width 30" (76 cm)
Handleless door/automatic door opening
Fresh steam system with water inlet and outlet.
Convection from 85° F - 450° F at variable humidity levels of 0%, 30%, 60%, 80% or 100%.
Full surface grill behind glass ceramic for easy cleaning, combinable with convection up to 450° F
TFT touch display
Steaming without pressure.
Electronic precision temperature control from 85° F - 550° F.
Removable meat probe.
Net volume 1.7 cu.ft.

Cooking modes
 Convection + 100 % humidity.
 Convection + 80 % humidity.
 Convection + 60 % humidity.
 Convection + 30 % humidity.
 Convection + 0 % humidity.
 Full surface grill + convection.
 Full surface grill.
 Full surface grill level 1 + humidity.
 Full surface grill level 2 + humidity.
 Proofing.
 Defrosting.
 Refreshing.
 Misting.
 Low temperature cooking.

Operation
 Automatic door opening.
 Rotary knobs and TFT touch display operation.
 Clear text display in 25 languages.
 Option to save individual recipes (incl. meat probe).
 Information key with use indicators.
 Side-opening door opens up to 180° angle.

Features
 2000W full surface grill behind glass ceramic
 Steam evacuation.
 Meat probe with automatic shut-off function.
 Actual temperature display.
 Timer functions: cooking time, shut off time, short-term timer, stop watch, Sabbath mode.
 Automatic boiling point detection.
 Capacity display of filter cartridge (if connected to GF 111 700 descaling system).
 60 W halogen light on the side.
 Hygienic stainless steel cooking interior.
 Four rack levels.

Safety
 Steam evacuation.
 Child lock.
 Safety lock.
 Cooled housing with temperature protection.

Cleaning
 Cleaning program.
 Drying program.
 Descaling program.
 Grease filter in front of convection fan, dishwasher-safe.

Planning notes
 Door hinge not reversible.
 No other electrical appliances should be installed above the BS combi-steam oven.

Product Features
Cooking mode
 Defrost, fermentation, grill, grill + hot air, grill + steam, Hot Air, Hot air + steam 100%, Hot air + steam 30%, Hot air + steam 60%, Hot air + steam 80%, low temperature steam, Regeneration
Time-setting Options
Convection Element Wattages primary cavity (W)
Included accessories
 1 x outlet hose 3m, 1 x STS tray-GN2/3-punched-40 mm deep, 1 x STS tray-GN2/3-unpunched-40 mm deep, 1 x grid, 1 x pluggable meat probe, 1 x water inlet hose 3m
Optional accessories
 GN114130, GN114230, GN124130, GN124230, GN144130, GN144230, GN154130, GN154230, GN340230, GN410130, GN410230, GR220046

Consumption and connection features
UPC code
 825225802907

Product color
 Stainless steel

Alternative colors available

Energy source
 Electric

Watts (W)
Current (A)
 13

Volts (V)
 208/220-240

Frequency (Hz)
 60

Approval certificates
 ETL

Power Cord Length
 47 1/4"

Plug type
 fixed connection

Overall appliance dimensions (HxWxD) (in)
 17 15/16 " x 29 5/8 " x 21 1/16 "

Required cutout size (HxWxD) (in)
 17 11/16 " x 28 1/2 " x 21 5/8 "

Product packaging dimensions (HxWxD) (in)
 22 13/16 x 32 11/16 x 27 9/16

Net weight (lbs)
 115

Gross weight (lbs)
 121

2015-11-25
Page 1

At no point may the drain hose be positioned higher than the bottom edge of the appliance. The outlet hose must also lie at least 4" lower than the appliance drain (see "waste water" drawing).

The outlet hose must not be longer than a maximum of 17'.

The water connection (1) for the inlet hose must always be accessible and not located directly behind the appliance.

The connection of the outlet hose to the siphon (2) must not be directly behind the appliance and should be accessible.

If the water hardness exceeds 7° dH, GF 111 700 (3) or another water softening system must be installed when connecting the appliance. (Please contact your plumber for details.)

The front of the appliance extends 1 7/8" from the cabinet front.

When handle (optional) accessory is installed, the outer edge of the door handle extends 3 11/16" from the cabinet front.

Consider the overhang, incl. the door handle, when planning to open drawers next to the appliance.

Plan a gap of at least 3/16" between the appliance and adjacent cabinets. When planning a corner solution, pay attention to the 90° door opening angle.

To achieve the 21 5/8" installation depth, the hoses and connecting cable need to follow the slanted edge on the lower left hand corner of the housing and then be led down and up, respectively. The power outlet needs to be planned outside of the niche.

Plan a power outlet outside of the cut-out niche.

Cold water connection (no hot water connection).

Supply hose 118" with 3/4" connection. Outlet hose (ø 1 ") 10 " (3.0 m) (HT-Hose).

Rating
 Total rating 3.2 kW.
 Total Amps: 13 A.
 208 / 220 - 240 V / 60 Hz
 Connecting cable 47 1/4" without plug (hardwire required).

Color Variants
BS484610
Stainless steel-backed full glass door
Width 30" (76 cm)

Included accessories

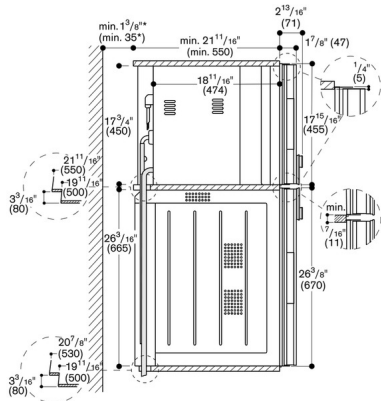
Optional accessories
GN114130
Stainless steel cooking insert
GN114230
Stainless steel cooking insert
GN124130
Stainless steel cooking insert
GN124230
Stainless steel cooking insert
GN340230
Non-stick aluminum cast-iron roaster
GN410130
Stainless steel lid
GN410230
Stainless steel lid
GR220046
Wire rack, chromium-plated

Installation Accessories
GZ010011
Extension for inlet and outlet (78" long)

Product Variants
BS485610
400 series Combi-steam oven
Stainless steel-backed full glass door
Width 30" (76 cm)
Left-hinged
Controls at the bottom

BS484610
 400 series Combi-steam oven
 Stainless steel-backed full glass door
 Width 30" (76 cm)
 Right-hinged
 Controls at the bottom

side view BS 484/485 over BO



* Only necessary if the water hoses of the BS cannot be fed through the corner openings of the appliances.

