

AMERICAN RANGE

QUALITY COOKING EQUIPMENT

INSTALLATION MANUAL, USE AND CARE AND WARRANTY FOR VILLA WARMING DRAWERS



ARR-27WD



ARR-27IRWD



ARR-30WD



ARR-30IRWD



ARR-36WD



ARR-36IRWD

DESIGN



CLASS



FUNCTION



ABOUT THIS MANUAL

BEFORE USING YOUR APPLIANCE, PLEASE READ THIS MANUAL, PAYING SPECIAL ATTENTION TO THE IMPORTANT SAFETY INSTRUCTIONS LOCATED IN THE NEXT SEVERAL PAGES

This manual is divided into several sections:

- 2 Important Safety Instructions** informs you about significant safety precautions when installing and operating your new appliance. **THIS IS A MUST READ SECTION OF THE MANUAL.**
- 5 Installation Section**
- 6 Villa Warming Drawer Dimensions and Cabinet Cutout Dimensions.**
- 8 Troubleshooting** describes how to troubleshoot common issues.
- 11 How to Operate Your Warming Drawer**
- 12 Care and Cleaning**
- 13 Warranty**

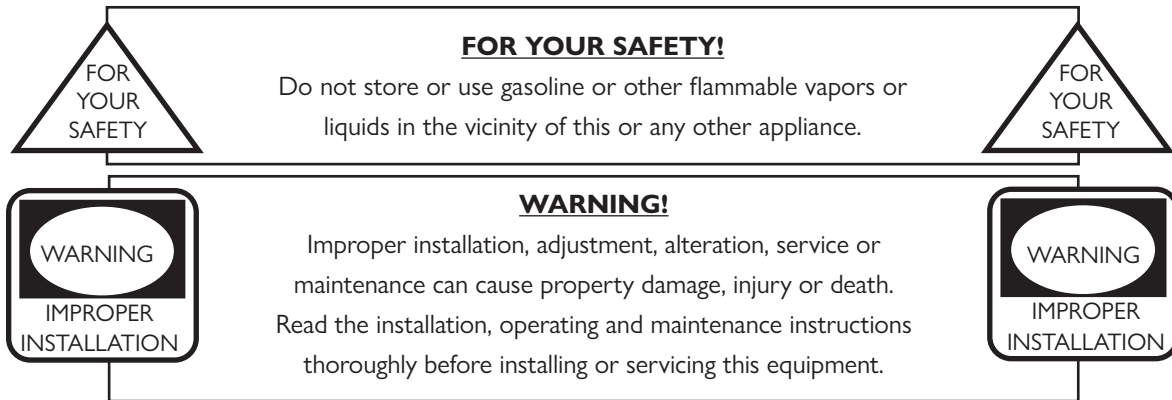


1

DESIGNED & BUILT IN USA
PROFESSIONAL COOKING EQUIPMENT

AMERICAN RANGE

IMPORTANT SAFETY INSTRUCTIONS



IMPORTANT – PLEASE READ AND FOLLOW!

Instruction to be followed in the event the user smells gas must be posted in a prominent location. This information must be obtained by consulting the local gas supplier.

- » Before beginning, please read all the instructions carefully.
- » **DO NOT** remove permanently affixed labels, warnings, or plates from product. This may void the warranty.
- » All local and national codes and ordinances must be observed, installation must conform with local codes.
- » The Installer must leave these instructions with the consumer who must retain for local inspector's use and for future reference.
- » Installation and service must be performed by a qualified installer, service agency or gas supplier.
- » Please ensure that the product is properly grounded.
- » In the Commonwealth of Massachusetts, installation must be performed by a licensed plumber or gas fitter.

Your safety and the safety of others is very important. We have provided many important safety messages in this manual and on your appliance. Always read and obey all safety messages.



This is the SAFETY ALERT SYMBOL. This symbol alerts you to hazards which will result in severe injury or death.



DANGER

Hazards or unsafe practices which will result in severe personal injury or death.



WARNING

Hazards or unsafe practices which may result in severe personal injury or death.



CAUTION

Hazards or unsafe practices which may result in minor personal injury or property damage.



WARNING

CA PROPOSITION 65: The burning of gas cooking fuel generates some chemical by-products which are on the list of substances known by the State of California to cause cancer, birth defects and/or reproductive harm. To minimize exposure to these substances, always operate this unit according to the Owners Manual, ensuring to provide proper ventilation.

IMPORTANT SAFETY INSTRUCTIONS

A ground fault interrupter (GFI) shall be used as required by NFPA-70 (*National Electric Code*), Federal / State / Local laws or local ordinances.

- » The required use of a GFI is normally related to the location of the receptacle to its proximity to significant sources of water or moisture.
- » American Range will not warranty any problems resulting from GFI outlets which are not installed properly or do not meet the requirements below.

IF THE USE OF A GFI IS REQUIRED, it must be:

- » The receptacle type (*breaker type or portable type not recommended*).
- » Used with permanent wiring only (*temporary or portable wiring not recommended*).
- » On a dedicated circuit (*no other receptacles, switches or loads in the circuit*).
- » Connected to a standard breaker or appropriate size (*GFI breaker of the same size not recommended*).
- » Rated for class ($5mA \pm 1mA$ trip current) as per UL 943 standard.
- » In good condition and free from any loose-fitting gaskets (*if applicable in outdoor situations*).
- » Protected from moisture (*water, steam, high humidity*) as much as reasonably possible.

WARNING

To prevent possible damage to cabinets and cabinet finishes, use only materials that will not discolor or delaminate and will withstand temperatures up to 194°F (90°C). Heat resistant adhesive must be used if the product is to be installed in laminated cabinetry, check with your builder or cabinet supplier to make sure that the materials meet these requirements.

WARNING

The use of cabinets for storage above the oven may result in potential fire or burn hazard.

DANGER

To avoid risk of electrical shock, personal injury or death; verify your appliance has been properly grounded in accordance with local codes, or in absence of codes, with the National Electrical Code (NEC), ANSI/NFPA 70 latest edition, or in Canada, to Canadian electrical codes, CSA, C22.2.

WARNING

Do not use the handle or door to lift the warming drawer, remove pull down door before installation to ensure that it is not used to lift the unit. Make sure pins are inserted into hinges before removing door to prevent injury to hands and / or fingers. (*See installation instructions*)

WARNING

The misuse of the appliance(s) (e.g.; *stepping, sitting, or leaning on them*) can result in hazard or injuries and damage to the product.

WARNING

This appliance must not be used for space heating. This information is based on safety considerations.

IMPORTANT SAFETY INSTRUCTIONS

DANGER

Do not store items of interest to children above or near the appliance. Children, as well as adults, must never be allowed to sit, stand or climb on any part of the appliance. Serious personal injury may occur.

WARNING

Always **DISCONNECT** the electrical plug from the wall outlet power source before servicing the unit. It is recommended that a dedicated electrical circuit be used for this appliance.

CAUTION

For personal safety, this appliance must be connected to a properly grounded and polarized electrical power supply. If only a two-prong outlet is available, it is the customer's responsibility to have it replaced with a dedicated, grounded, three-prong electrical outlet by a licensed technician.

- » Do not cut or remove the third (*ground*) prong from the power cord
- » Do not use an adapter plug
- » Do not use an extension cord
- » Do not use a power cord that is frayed or damaged

DANGER

To avoid the possibility of explosion or fire, do not store or use combustible, flammable or explosive liquids (*such as gasoline*) or vapors inside or in the vicinity of this or any other appliance. Keep items that could explode, such as aerosol cans, away from the product. Do not store explosive or flammable materials in nearby cabinets or areas. When operating the warming drawer, do not touch the heating element, the inside surfaces of the drawer and drawer door – these can become **HOT** enough to cause burns.

WARNING

The California Safe Drinking Water and Toxic Enforcement Act of 1986 (*Proposition 65*) requires the Governor of California to publish a list of substances known to the State of California to cause cancer or reproductive harm, and requires businesses to warn customers of potential exposures to such substances. Users of this appliance are hereby warned that when the oven is operated, there may be some low-level exposure to some of the listed substances including carbon monoxide. Exposure to these substances can be minimized by properly venting the oven to the outdoors using approved overhead ventilation equipment or by opening the windows and/or doors in the room where the appliance is located. This appliance must not be operated without a properly sized and functional ventilation hood.

CAUTION

Purchase a kitchen fire extinguisher for your home and store it in close proximity to your appliance. Should an uncontrolled fire occur, never use water on grease fires. Never pick up a flaming pan. Use the door handle to open or close the appliance door.

Children must not be left alone or unattended in the kitchen while the appliance is in use. Never leave the appliance unattended during use. Boil-overs may occur, causing spills which may ignite.

Never wear loose fitting or long sleeved apparel while cooking. Never wear garments made of flammable materials. Clothing may ignite or catch utensil handles. **DO NOT** drape towels or other items on door handles. These items could ignite and cause burns.

ALWAYS turn the appliance off at the end of cooking.

INSTALLATION

WARNING

NEVER use this appliance as a space heater to heat or warm the room. Doing so may result in carbon monoxide poisoning and overheating of the appliance. Do not use the warming drawer as a food or kitchen item storage area.

Do not store or use corrosive chemicals, vapors, flammables or non-food products in or near this appliance. It is specifically designed for use when heating or cooking food. The use of corrosive chemicals while heating or cleaning could result in personal injury or damage to the appliance.

CAUTION

Act quickly to prevent the fire from getting out of control.

If a fire occurs inside an oven, close the oven door and keep it closed – and turn off the oven. The lack of oxygen will help suffocate the flames.

If the oven continues to smoke as if a fire were in process – call the fire department.


Do not use water on grease fires – turn off the burner, and if you can't cover the flaming pot with a lid, throw lots of baking soda or salt on it. Never use a kitchen towel or potholder to snuff out flames! Never throw flour on a fire – as it may explode!

INSTALLING THE WARMING DRAWER INTO A CABINET OR ISLAND

- » Position the warming drawer to the front of the cabinet or island cutout. Remove any leftover packaging material.
- » Locate the rating plate and record the information on the warranty card in this manual.
- » Locate the power supply cord, insert the cord through the cutout and plug into the 120 VAC three-prong receptacle.
- » Pull the warming oven door handle out and use the drawer front frame to push the warming drawer into the cutout. The stainless steel front frame should be flushed even with the cabinet front.
- » Remove the plastic protective film from the stainless steel parts.
- » Secure the warming drawing to the cabinet or island using the supplied screws.
- » Perform a pre-functional test by pressing ON/OFF button. The light should turn on and off.
- » Push the door handle in to close the warming drawer.

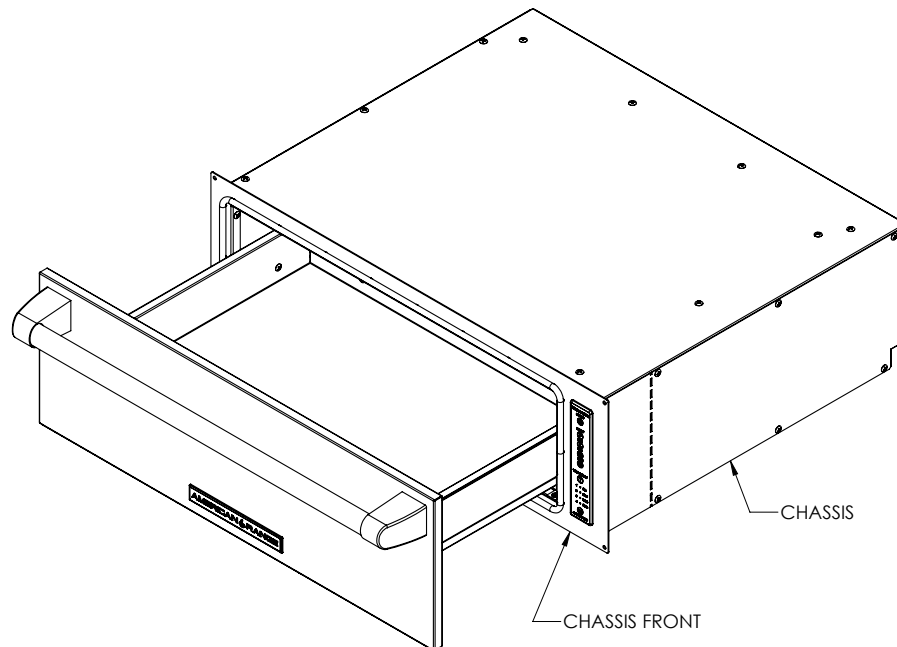
RATING PLATE

The information on the rating plate defines the model, serial number and electrical ratings. Keep this information for future reference. It is essential for proper identification of the unit when requesting additional information or factory support.

		AMERICAN	
Intertek 3013256		American Range 13592 DESMOND ST., PACOIMA, CA 91331 (www.americanrange.com)	
WARMING DRAWER MODEL NUMBER			
ARR-27WD	<input type="checkbox"/>	ARR-30WD	<input checked="" type="checkbox"/>
ARR-27IRWD	<input type="checkbox"/>	ARR-30IRWD	<input type="checkbox"/>
SERIAL NO. XXXXXX-XXX		ARR-36WD	<input type="checkbox"/>
		ARR-36IRWD	<input type="checkbox"/>
<small>FOR INDOOR AND OUTDOOR BUILT-IN USE ONLY PROTECTED BY U.S. PATENT 7,166,821 REPLACEMENT LAMP RATINGS: 100WAC, 200WATT ELECTRICAL RATING: 60HZ, 8AMP</small>			
CAUTION			
<small>TO ENSURE CONTINUED PROTECTION AGAINST ELECTRICAL SHOCK, CONNECT TO PROPERLY GROUNDED OUTLETS ONLY. TO REDUCE RISK OF FIRE, DO NOT PLACE ANY HEATING OR COOKING APPLIANCE BENEATH THIS UNIT. TO REDUCE THE RISK OF ELECTRICAL SHOCK, KEEP EXTENSION CORD CONNECTION DRY AND OFF THE GROUND. UL 1026 2007/01/31 HOUSEHOLD COOKING APPLIANCES</small>			

Rating Plate

INSTALLATION



WARMING DRAWER DIMENSIONS:

- ARR-36WD – chassis front: 36" (914 mm) wide by 10" (254 mm) high
chassis: 34-1/2" (876 mm) by 9 1/4" (235 mm) high by 23-1/2" (597 mm) deep
- ARR-30WD – chassis front: 30" (762 mm) wide by 10" (254 mm) high
chassis: 28-1/2" (724 mm) by 9 1/4" (235 mm) high by 23-1/2" (597 mm) deep
- ARR-27WD – chassis front: 27" (686 mm) wide by 10" (254 mm) high
chassis: 25-1/2" (648 mm) by 9 1/4" (235 mm) high by 23-1/2" (597 mm) deep

CUTOUT DIMENSIONS:

- ARR-36WD – 34-5/8" (879 mm) wide by 9 3/8" (238 mm) high
- ARR-30WD – 28-5/8" (727 mm) wide by 9 3/8" (238 mm) high
- ARR-27WD – 25-5/8" (651 mm) wide by 9 3/8" (238 mm) high

IMPORTANT

Verify by measuring actual appliance from box. Measure twice, cut once.

INSTALLATION

Packing Materials

The packing materials that protect the appliance during shipping have been designed to be biodegradable and recyclable. Please be sure that any plastic wrappings, bags, etc. are disposed of safely and kept out of the reach of children.

Old Appliances

This appliance contains materials that can be recycled. Please contact your local recycling authority about the possibility of recycling these materials. Please be sure that the appliance presents no danger to children while being stored for disposal. Before discarding an old appliance, unplug it from the outlet and cut off its power cord. Remove any drawers to prevent trapping hazards.

⚠ CAUTION

Before servicing, disconnect the power supply by either removing the fuse, shutting off the power main or manually “tripping” the circuit breaker. Installation work and repairs should only be performed by a qualified technician in accordance with all applicable codes and standards. Repairs and service by unqualified persons could be dangerous and the manufacturer will not be held responsible.

IMPORTANT SAFETY INSTRUCTIONS

Before connecting the appliance to the power supply, make sure that the voltage and frequency listed on the rating plate correspond with the household electrical supply. Consult an electrician if in doubt. Only operate the Warming Drawer after it has been installed.

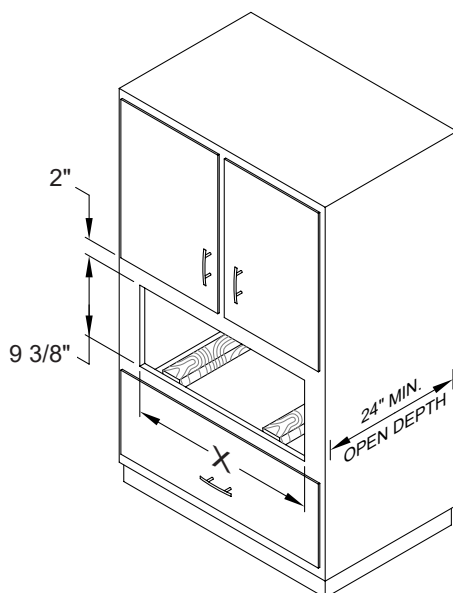
INSTALLER: Please leave these instructions with the consumer.

Electrical Connection

This appliance is equipped with a five-foot-long power cord with a three-prong grounding plug ready for connection to a standard 120 VAC, 60 Hz, 15 AMP power source.

Installation Tips

- » The warming drawer should be located in the cabinet at a convenient height for easy access.
- » The drawer should be installed clear of drafts caused by open doors and windows.
- » Proper clearance must be allowed for the warming drawer to open without interference.
- » The warming drawer must be secured to cabinetry to prevent the drawer from tipping when loading or unloading.
- » The warming drawer should be level to prevent the drawer sliding open or closed on its own. The drawer cannot be leveled after it has been installed. If necessary install a shelf inside the cabinetry to support the drawer.

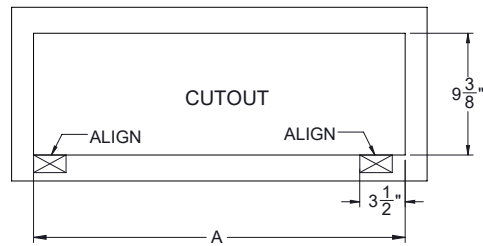
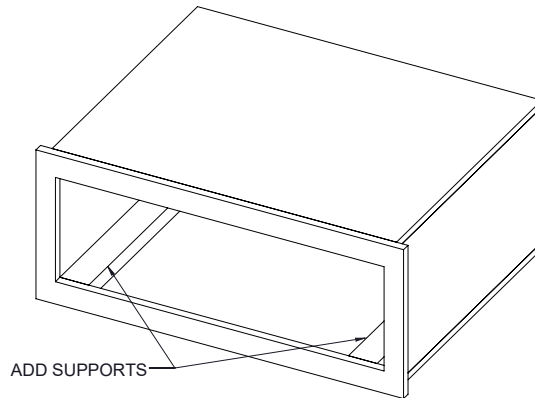


Five foot cord and plug connects from lower right rear side to 120 VAC service.

All installations must be performed in accordance with local codes.

WD WIDTH	"X" DIMENSION
27" (686 mm)	25-5/8" (651 mm)
30" (762 mm)	28-5/8" (727 mm)
36" (914 mm)	34-5/8" (625 mm)

INSTALLATION



TROUBLESHOOTING		
PROBLEM	POSSIBLE CAUSE	WHAT TO DO
Drawer does not heat.	There is no power to the warming drawer or the circuit breaker has been tripped.	Plug the appliance into the outlet or reset the circuit breaker.
Food is not warm.	Adjust the temperature setting.	Check that the convection fan vents have not been blocked by large plates or dishes.
Dishes are not warm.	The wrong temperature was selected or the dishes need more time to warm.	Check the temperature setting or increase the heater timer setting.
Food or dishes are too hot.	Temperature setting is incorrect.	Check the temperature setting and make sure food is not too close to the heating element.
Appliance is noisy.		This is not a problem. The circulation fans which distribute heated air make a sound when they operate.

INSTALLATION

INTEGRATED DOOR INSTALLATION INSTRUCTIONS

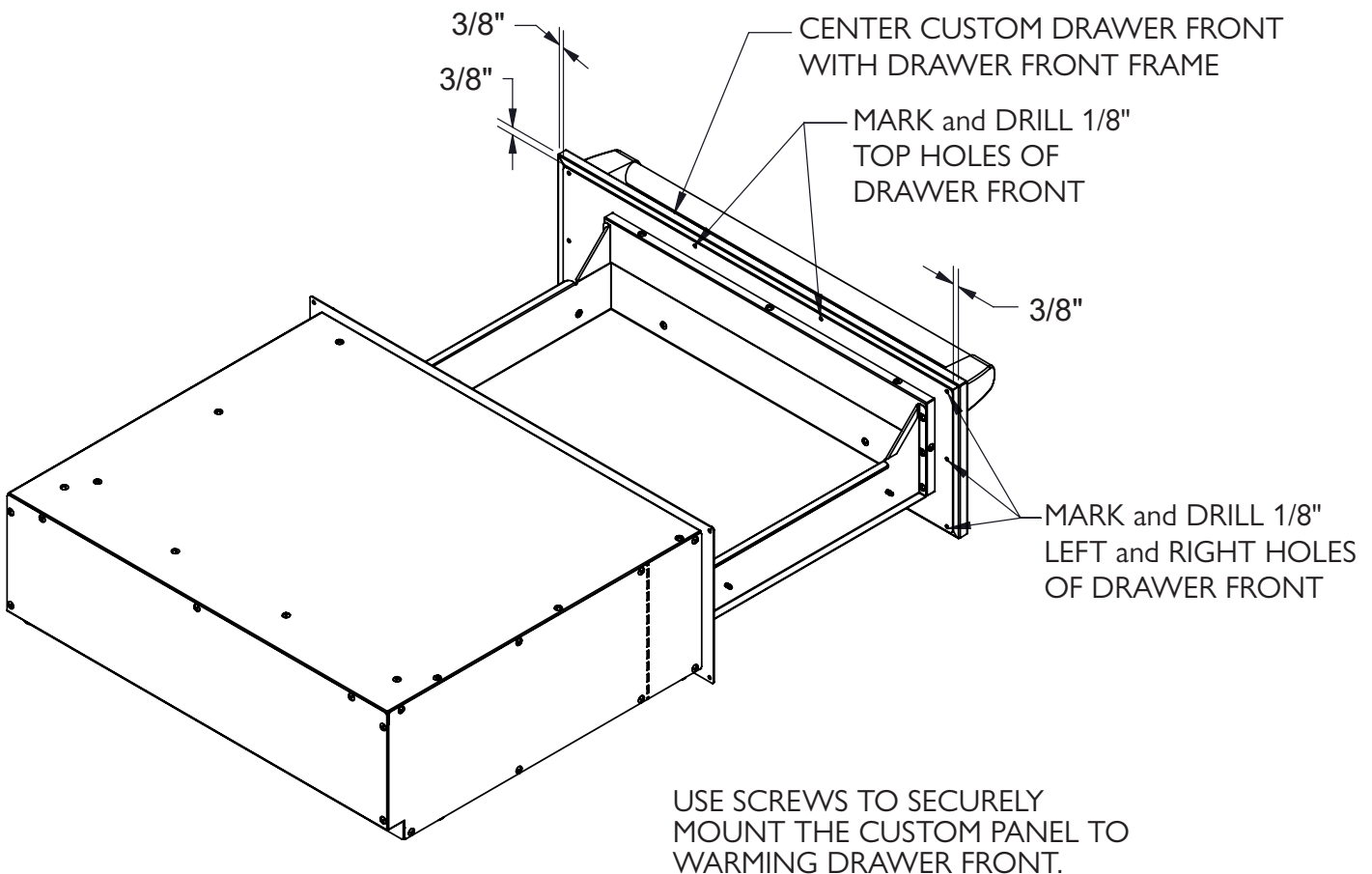
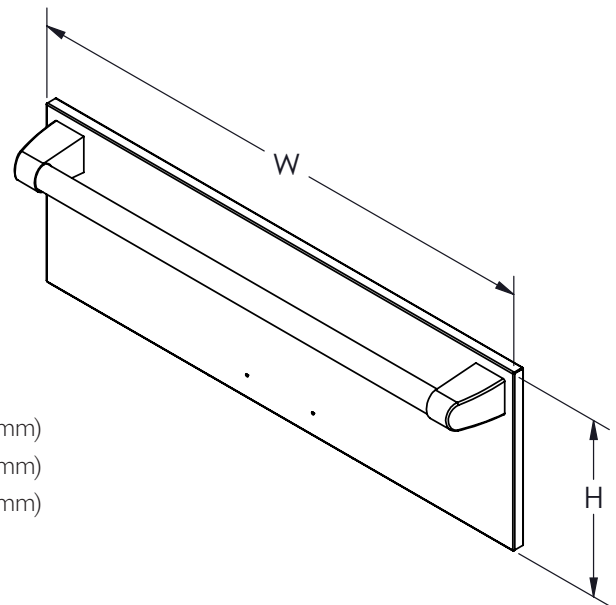
- » Custom made front panels can be installed with models ARR-27IRWD, ARR-30IRWD and ARR-36IRWD.
- » The custom panel must be at least 3/8" (10 mm) thick and made of heat resistant material rated for 140°F (60°C) service.

CUSTOM PANEL DIMENSIONS

27" 27"W x 10"H x 3/8"minD (689 x 254 x 10 min mm)

30" 30"W x 10"H x 3/8"minD (762 x 254 x 10 min mm)

36" 36"W x 10"H x 3/8"minD (914 x 254 x 10 min mm)



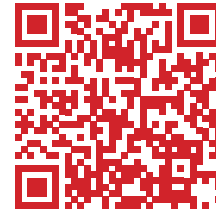
INSTALLATION CHECKLIST

**REGISTRATION CARD
TO VALIDATE YOUR WARRANTY,
YOU MUST MAIL, EMAIL OR FAX THIS FORM WITH A COPY
OF YOUR RECEIPT TO:**

AMERICAN RANGE CUSTOMER SERVICE,
13592 DESMOND STREET, PACOIMA, CA 91331
EMAIL: info@americanrange.com FAX: 818.897.8839

REGISTER ONLINE AT

www.americanrangehome.com/product-registration/



This checklist has been developed to assure proper installation of your appliance.

Model Number: _____ *	Installation Date: _____
Serial Number: _____ *	Installation Company: _____
Gas Type: _____ *	Installation Rep's Name: _____
Electrical Information: _____ *	Installer's Address: _____
Purchase Date: _____	Installer's Phone: _____
Dealer: _____	* As specified on appliance Rating Plate – see page 6 for reference.

CHECK ALL THAT APPLY

PRODUCT INSPECTION *(Appearance and Aesthetics)*

Inspect Packaging and Unit for Shipping Damage

- ☐ Packaging damage? Yes No
- ☐ Unit damage? Yes No

Inspect Unit for Manufacturing Defects

- | | | |
|--|-----|----|
| <input type="radio"/> All Packaging Removed? | Yes | No |
| <input type="radio"/> Front Section Defects? | Yes | No |
| <input type="radio"/> Side Panels Defects? | Yes | No |

INSTALLATION

- | | | |
|--|-----|----|
| <input type="radio"/> Installation Manual Read? | Yes | No |
| <input type="radio"/> Safety Instructions Read? | Yes | No |
| <input type="radio"/> Specified Clearances (<i>Including Cabinet-Surfaces Clearances</i>) were followed? | Yes | No |
| <input type="radio"/> Unit Leveled, Front-to-Back and Side-to-Side? | Yes | No |
| <input type="radio"/> Hold Down Bracket Installed? | Yes | No |
| <input type="radio"/> Electrical Supply Properly Grounded? | Yes | No |
| <input type="radio"/> Proper Polarity at receptacle? | Yes | No |
| <input type="radio"/> Electrical Supply Adequate/Specified Input Voltage? | Yes | No |
| <input type="radio"/> Power Cord Free From Damage? | Yes | No |
| <input type="radio"/> No Extension Cord In Use? | Yes | No |
| <input type="radio"/> GFCI Installed to specifications? | Yes | No |

FUNCTIONAL VERIFICATION

- | | | |
|--|-----|----|
| <input type="radio"/> Oven Door(s) Functioning? | Yes | No |
| <input type="radio"/> Hinge-Swing Motion Confirmed? | Yes | No |
| <input type="radio"/> Door Alignment Confirmed? | Yes | No |
| <input type="radio"/> Gasket Seal Confirmed? | Yes | No |
| <input type="radio"/> A Copy of This Manual Has Been Provided To The Owner of The Appliance? | Yes | No |

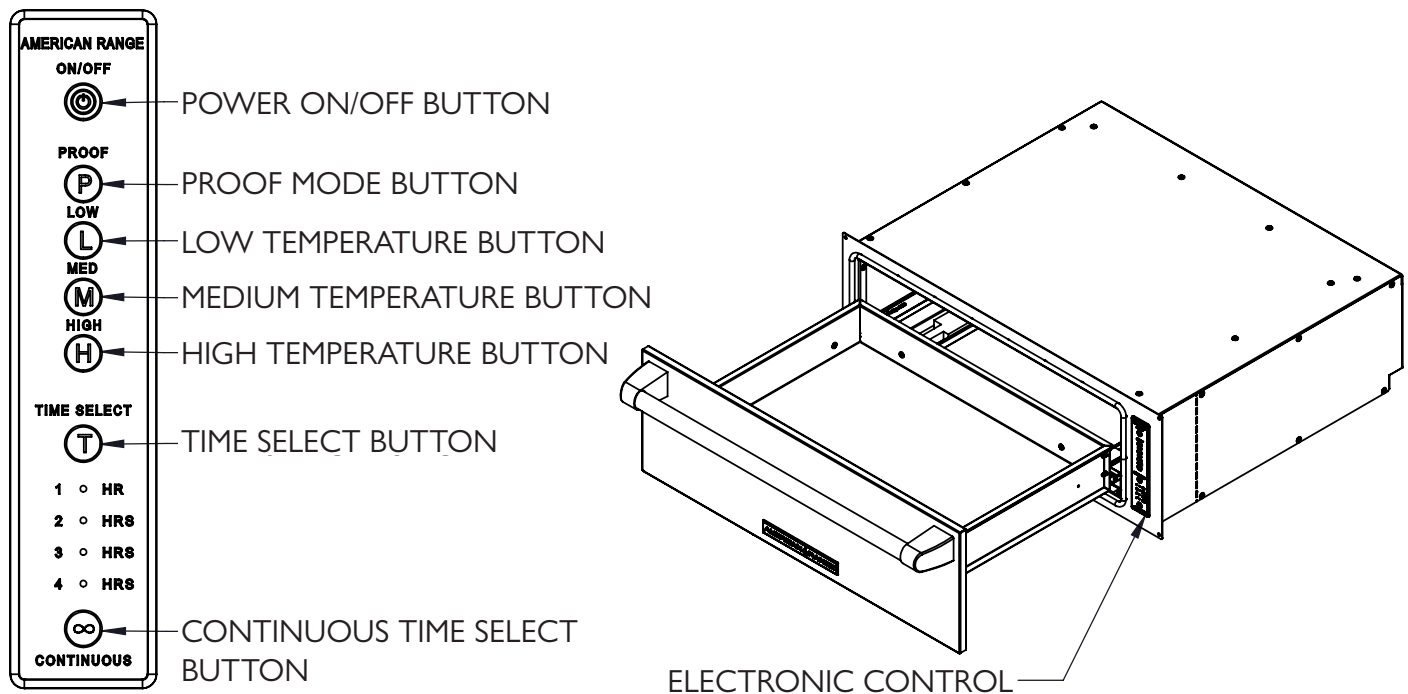
INSPECTION and INSTALLATION NOTES:

[illegible]

Questions?

In the event of a fault which you cannot easily fix yourself, please contact American Range. When contacting Technical Service please quote the Serial Number and Model Number of the warming drawer. This information is visible on the silver data plate located beneath the drawer.

OPERATING YOUR WARMING DRAWER



To use the warming drawer, open the drawer door.

Press the ON/OFF to start and button light shall light up, the heating element shall be energized and the convection fan shall turn on.

PROOF – use to proof bread and other baked goods dough with yeast. Maximum temperature is 100°F.

The convection fan runs continuously in this mode. Keep the warming drawer door closed.

The warming drawer has 3 temperature settings and 4 timer selections, plus a continuous setting.

L (Low) – use to keep warming drawer temperature to 130°F;

M (Med) – use to keep warming drawer temperature to 160°F;

H (High) – use to keep warming drawer temperature to 190°F.

T (Timer Selection) – Press once for 1 HR and panel light shall light; press twice for 2 HR; press 3 times for 3HR; and press 4 times for 4 HR. The indicator light shall light and move correspondingly to the time selection.

CONTINUOUS – the warming drawer shall operate continuously when selected for parties and holidays.

This selection may also be used during observance of the Sabbath.

To turn off the appliance, press the ON/OFF button. The button light should not be lit and the convection fan should stop rotating.

IMPORTANT ! ALWAYS TURN OFF THE APPLIANCE WHEN NOT IN USE.

OPERATING YOUR WARMING DRAWER

OPERATING TIPS

- » This is not a cooking device. Place already cooked and hot food into drawer to keep it at serving temperature.
- » The warming drawer can be turned off at any time by pressing the ON/OFF key.
- » Take care when opening and closing the loaded drawer to prevent spills
- » The warming drawer can also be used to warm glass, pyrex or ceramic heat resistant dishes.
- » Carefully remove dishes using oven mitts.
- » Food and dishes can also be warmed simultaneously.

CAUTION

Dishes may be very hot!

CLEAN UP

- » Cleaning the Appliance Front and Electronic Control Panel
- » Clean the control panel with a soft, lightly dampened cloth sprayed with a mild glass cleaner (i.e.; Simple Green). Dry the control panel completely with a soft lint-free cloth. All external surfaces and controls can be cleaned with warm water and liquid dish soap applied with a sponge. Wipe the surfaces dry using a soft cloth.
- » Cleaning the Glass Shield
- » The surface of the glass shield can be cleaned with a glass cleaner.
- » Cleaning Stainless Steel Surfaces
- » Stainless Steel surfaces can be cleaned using a non-abrasive Stainless Steel cleaner.
- » Avoid the following on all surfaces:
- » Abrasive cleaning agents, such as powder or cream cleansers
- » Abrasive sponges, pot scourers or sponges that were used with abrasive cleaning agents
- » Oven sprays

CAUTION

Before servicing, disconnect the power supply by either removing the fuse, shutting off the power main or manually “tripping” the circuit breaker. Do not clean or remove the Warming Drawer until it has cooled.

WARRANTY

American Range (hereafter AMR) hereby provides the following warranty to the original residential user ("Owner") for its new RESIDENTIAL Product(s) to be free from defects in material and workmanship in normal household use for the Warranty period(s) set forth below, beginning from the date that power and/or gas is turned on with proof of installation.

Without proof of installation, the beginning is from time of purchase under the terms and conditions as follows: Proof of original purchase date is required to obtain service under this limited warranty.

This Warranty is applicable only on new AMR residential Products and is non-transferable.

This Warranty is not applicable to AMR commercial Products. This Warranty is strictly limited to Products sold to the original Owner in the United States or Canada, and said Owner shall not be entitled to transfer this Warranty to third parties. This Warranty is also not applicable on AMR residential Products that are used for commercial purposes, including without limitation, vacation rentals, fire stations, clubs, government facilities, non-profit groups, bed and breakfast facilities, and board and care facilities, and any home based business whereby AMR products are utilized for a commercial, non-household purpose. Residential products should not be used in a commercial environment.

Warranty Period: For all Product(s) properly registered with AMR, with proof of purchase and within ninety (90) days from the date of purchase, a two year warranty* is in effect subject to the terms and conditions herein. However, in the event that Owner fails to promptly register the Product(s) with AMR within ninety (90) days of the date of purchase, the Warranty period shall be strictly limited to a period of one year for parts and labor, from the date of purchase. Proof of purchase is required for all claims under this Warranty.

*Igniters limited to a one year warranty, from the date of purchase. Proof of purchase is required for all claims under this Warranty. Two Year Warranty applies only to purchases made after May 1, 2018, with a serial number of 180101-100 or higher.

Exceptions to the Warranty: Rubber seals, light bulbs, and gaskets are covered for a period of ninety (90) days only. Oven glass, porcelain, and Products that are not defective, but that require adjustments for normal wear and tear are expressly excluded from this Warranty.

Warranty Claims: In the event of a claim for repair of the Product(s), and to obtain warranty service, Owner must contact either (i) the dealer from whom the product was purchased; (ii) an authorized AMR service agent; or (iii) AMR Residential service support at 1-888-753-9898. You will be asked to provide a model and serial number, and date of original purchase.

AMR shall provide all new replacement parts and all repair labor under the Warranty.

Under the terms of this Warranty, service must be performed by a factory authorized AMR service agent/representative, and approved in advance by AMR. AMR shall not be responsible for labor costs that have not been pre-approved, with written confirmation by AMR. Note that service providers are independent entities and not affiliated with AMR. Travel expenses from the factory authorized service agent to the product location are limited to 25 miles each way. For greater distances, either have the product delivered to the servicer, make separate travel arrangements, or pay for the additional servicer travel. All repair services shall be provided during normal business hours. AMR will not be responsible for premium time or overtime charges for labor covered under this warranty or for repairs made without AMR authorization. Such charges shall be the responsibility of the Owner.

Limitation of Warranty: AMR shall have no obligation under this Warranty as to any Product(s) which have been misapplied, mishandled, abused, misused, modified, altered, subject to improper cleaning methods, subject to harsh chemical action, modified by unauthorized service personnel, damaged by accidents, flood, fire, smoke, public unrest, earthquake, tornado, hurricane, other acts of God, Owner negligence,

reasons beyond the control of AMR, failures due to improper installation, insufficient gas or electrical supply, problems due to improper ventilation, or removed/altered serial numbers. Any damage due to water, chemical, or direct contact to infrared burners will also not be covered under this Warranty. This Warranty shall be void if the Product(s) are not properly installed by a licensed plumber, and not properly calibrated for electrical and gas connectivity, gas line size, correct pressure, and properly leveled. Additionally, AMR factory recommended cleaning instructions must be followed by Owner at all times or this Warranty shall be voided by AMR. All delivery, installation, labor costs and other service costs are the responsibility of the purchaser.

Dealer display, model home display and products sold "as-is" have the following warranty:

1. One (1) year parts only warranty, if the manufacture date is less than three (3) years old.
2. Excludes items that are: missing; cracked; aesthetic; broken; dented; frayed.

Accordingly, except as stated herein-above the dealer display and model home display goods are being sold on an "as-is" or "with all faults" basis. Except as stated, the entire risk as to the quality and performance of the goods is with the buyer. Additionally, except as stated, should the goods prove defective following their purchase, the buyer and not the manufacturer, distributor, or retailer assumes the entire cost of all necessary servicing or repair.

THIS WARRANTY IS LIMITED AND MADE IN LIEU OF ANY AND ALL OTHER SUCH WARRANTIES EXPRESSED OR IMPLIED, INCLUDING WITHOUT LIMITATION, ANY IMPLIED WARRANTY OF MERCHANTABILITY OR FITNESS FOR A PARTICULAR PURPOSE. THE ENTIRE LIABILITY OF AMR IS SET FORTH HEREIN THIS WARRANTY. OWNER SPECIFICALLY UNDERSTANDS AND ACKNOWLEDGES THAT THERE ARE NO WARRANTIES, EITHER EXPRESSED OR IMPLIED HEREUNDER OTHER THAN THE WARRANTIES WHICH ARE SPECIFICALLY STATED HEREIN. SAID OWNER SHALL NOT RELY ON ANY OTHER ASSERTIONS, REPRESENTATIONS OR STATEMENTS BY AMR OR ITS AGENTS, OTHER THAN THOSE SPECIFICALLY EXPRESSED IN THIS WARRANTY.

AMR'S LIABILITY ON ANY CLAIM OF ANY KIND IS EXPRESSLY LIMITED AND SHALL NOT EXCEED THE WHOLESALE PRICE OF THE PRODUCT(S) OR PART(S) THEREOF THAT GIVE RISE TO SUCH CLAIM.

Failure by AMR to enforce any of its rights under this Warranty shall not be construed as a waiver of those rights. AMR specifically reserves the right to investigate and verify all claims to determine the validity of the claim and the claimant's qualifications under this Warranty. AMR reserves the right to refuse Warranty service in the event that AMR determines that a claimant's right to the Warranty is inapplicable under the terms and conditions herein.

AMR is not responsible for consequential or incidental damage whether arising out of breach of warranty, breach of contract, tort, or any other legal theory, including without limitation, property damage, bodily injury, loss of use, and/or lost profits. This Warranty gives the Customer certain legal rights. The customer may also have other legal rights which vary from state to state. Some states do not allow limitations on how long an implied warranty lasts, or do not allow the exclusion or limitation of incidental or consequential damages. If such laws apply, the limitations or exclusions contained in the terms and conditions of this Warranty may not apply to all such Owners.

AMR expressly reserves the right to make changes to their Warranty policy before or after purchase by the Owner.

WARRANTY REQUIREMENT

For reliable operation and for your own safety, this professional cooking equipment must be installed by a certified/licensed contractor.

Failure to comply will void any written or implied warranty.

In the event the equipment requires service during the standard warranty period, the receipt proving certified installation must be made available to American Range for verification.

If installation was not performed by a certified/licensed contractor, be prepared to submit a major credit card for payment for proper installation prior to service.